

UR20-3EM-230V-AC

Weidmüller Interface GmbH & Co. KG

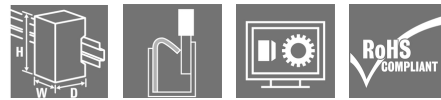
Klingenbergstraße 26

D-32758 Detmold

Germany

www.weidmueller.com

Product image



Power measurement module

Power measurement module for 1 or 3 phases, rated voltage up to 300 Veff

The power module serves to measure and process currents & voltages of single-phase or three-phase loads up to a rated voltage of 300 Veff AC (phase & neutral conductor). Reactive, apparent, harmonic and active power, energy consumption, phase angle and many other electrical parameters are measured and calculated directly with the module. Which data are transmitted via the process data of the various fieldbuses can be selected using parameters.

The power measurement module can easily be integrated into existing automation solutions using u-remote. If using conversion current measuring transducers, no intervention needs to be made into the existing installation.

Currents up to 1 A or 5 A can be measured directly, higher currents can be measured with plug-on or conversion current measuring transducers from Weidmüller.

General ordering data

| | |
|-------------------|--|
| Version | Remote I/O module, IP20, 6-channel, Input, Power measurement, PUSH IN connection |
| Order No. | 2007420000 |
| Type | UR20-3EM-230V-AC |
| GTIN (EAN) | 4050118392777 |
| Qty. | 1 pc(s). |
| Replacement parts | 1350930000 1562270000 2068630000 |

UR20-3EM-230V-AC

Weidmüller Interface GmbH & Co. KG

Klingenbergstraße 26

D-32758 Detmold

Germany

www.weidmueller.com

Technical data

Dimensions and weights

| | | | |
|-----------------------------|---------|-----------------|------------|
| Depth | 76 mm | Depth (inches) | 2.992 inch |
| Height | 120 mm | Height (inches) | 4.724 inch |
| Width | 11.5 mm | Width (inches) | 0.453 inch |
| Mounting dimension - height | 128 mm | Net weight | 90 g |

Temperatures

| | | | |
|-----------------------------|-------------------|-----------------------------|-------------------|
| Storage temperature | -40 °C ... +85 °C | Operating temperature | -20 °C ... +60 °C |
| Operating temperature, min. | -20 °C | Operating temperature, max. | 60 °C |

analogue inputs

| | | | |
|--------------------------------|---|--------------------------------------|--|
| Analysis of harmonic | 31 (Blackmann-Harris Window) | Category for voltage measurements | CAT II (IEC 61010 Part 1) |
| Connectable converter ratios | 1 ... 1000 | Frequency of the supply system | 45...65 Hz |
| Input impedance voltage | 2.4 MΩ per channel | Insulation | 1.5 kV _{eff} (input / system) |
| Measurement accuracy | 0.5% in relation to final value (U / I), 1% for the calculated values | Measurement method | High Resolution Delta Sigma (current measurement in outer conductor) |
| Measurement resistance (shunt) | 4 mΩ (at 5 A), 20 mΩ (at 1 A) | Module diagnosis | Yes |
| Nominal peak voltage | 4 kV | Number | 3 |
| Power rating | 0...1 A / 0...5 A AC | Rated voltage | 300 V _{eff} (L-N), 520 V _{eff} (L-L) |
| Resolution | 16 bit per channel (internal 24 bit) | Sampling rate of current measurement | 3,300 samples/s |

Connection data

| | | | |
|--|----------------------|--|----------------------|
| Number | 3 | Type of connection | PUSH IN |
| Wire connection cross section, finely stranded, max. | 1.5 mm ² | Wire connection cross section, finely stranded, min. | 0.14 mm ² |
| Wire cross-section, finely stranded, max. (AWG) | AWG 16 | Wire cross-section, finely stranded, min. (AWG) | AWG 26 |
| Wire cross-section, solid, max. | 1.5 mm ² | Wire cross-section, solid, max. (AWG) | AWG 16 |
| Wire cross-section, solid, min. | 0.14 mm ² | Wire cross-section, solid, min. (AWG) | AWG 26 |

UR20-3EM-230V-AC

Weidmüller Interface GmbH & Co. KG

Klingenbergstraße 26

D-32758 Detmold

Germany

www.weidmueller.com

Technical data

General data

| | | | |
|--------------------------|--|---------------------------|--|
| Air humidity (operation) | 10% to 95%, non-condensing as per DIN EN 61131-2 | Air humidity (storage) | 10% to 95%, non-condensing as per DIN EN 61131-2 |
| Air humidity (transport) | 10% to 95%, non-condensing as per DIN EN 61131-2 | Air pressure (operation) | ≥ 795 hPa (height ≤ 2000 m) as per DIN EN 61131-2 |
| Air pressure (storage) | 1013 hPa (height 0 m) to 700 hPa (height 3000 m) as per DIN EN 61131-2 | Air pressure (transport) | 1013 hPa (height 0 m) to 700 hPa (height 3000 m) as per DIN EN 61131-2 |
| Pollution severity | 2 | Rail | TS 35 |
| Shock | 15 g over 11 ms, half sinus wave, acc. to IEC 60068-2-27 | Surge voltage category | II |
| Test voltage | 500 V | UL 94 flammability rating | V-0 |
| Vibration resistance | 5 Hz ≤ f ≤ 8.4 Hz: 3.5-mm amplitude as per IEC 60068-2-6, 8.4 Hz ≤ f ≤ 150 Hz: 1 g acceleration as per IEC 60068-2-6 | | |

Power supply

| | | | |
|---|--|--|------|
| Current consumption from I _{IN} (the respective power segment) | 12 mA | Current consumption from I _{sys} , typ. | 8 mA |
| Voltage supply | 24 V DC +20 %/ -15 %, via the system bus | | |

System data

| | | | |
|--|------------------------------------|--------------------|--|
| Configuration interface | Micro USB 2.0 | Field bus protocol | CANopen, DeviceNet, EtherCAT, EtherNet/IP, Modbus/TCP, PROFINET IRT, PROFIBUS DP-V1, POWERLINK |
| Galvanic isolation | 500 V DC between the current paths | Interface | u-remote system bus |
| Module type | Functional module | Process data | 32 Byte |
| Transmission speed of system bus, max. | 48 Mbit | | |

Classifications

| | | | |
|-------------|-------------|-------------|-------------|
| ETIM 6.0 | EC001601 | ETIM 7.0 | EC001601 |
| ETIM 8.0 | EC001601 | ECLASS 9.0 | 27-24-26-05 |
| ECLASS 9.1 | 27-24-26-05 | ECLASS 10.0 | 27-24-26-05 |
| ECLASS 11.0 | 27-24-26-05 | ECLASS 12.0 | 27-24-26-05 |

Environmental Product Compliance

| | |
|------------|--------------------------------------|
| REACH SVHC | Lead 7439-92-1 |
| SCIP | 82327f13-cd27-455a-ab5b-a62e1996dcf8 |

UR20-3EM-230V-AC

Weidmüller Interface GmbH & Co. KG
 Klingenbergstraße 26
 D-32758 Detmold
 Germany

www.weidmueller.com

Technical data

Approvals

Approvals



| | |
|---------------------------|------------|
| ROHS | Conform |
| UL File Number Search | UL Website |
| Certificate no. (cULus) | E141197 |
| Certificate no. (cULusEX) | E223527 |

Downloads

| | |
|---|---|
| Approval/Certificate/Document of Conformity | Compass safe distance certificate Lloyds Register certificate DNV/GL certificate ABS certificate RINA certificate Bureau Veritas - Type Approval Certificate PRS (Polish Register of Shipping) NIPPON KAIJI KYOKAI Certificate UKCA Declaration of Conformity - EN CE Declaration of Conformity - DE |
| Engineering Data | CAD data – STEP Library and function block – u-remote UR20 Library for CoDeSys 3.5 - EN - V2.0.0 Compatibility information – Combinability of UR20 Quick start guide – Function blocks for UR20-3EM-230V-AC Library and function block – Weidmueller u-create studio 1.20.2 - EN - V2.0.0 |
| Engineering Data | WSCAD, Zuken E3.S |
| Product Change Notification | Release-Notes - Firmware |
| Software | Firmware – Current firmware UR20-3EM-230V-AC Firmware – Archive firmware UR20-3EM-230V-AC |
| User Documentation | MAN U-REMOTE DE MAN U-REMOTE EN |
| Catalogues | Catalogues in PDF-format |

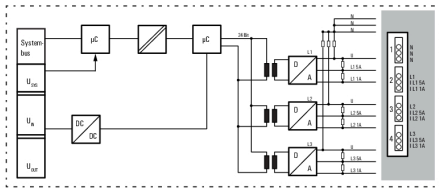
UR20-3EM-230V-AC

Weidmüller Interface GmbH & Co. KG
 Klingenbergstraße 26
 D-32758 Detmold
 Germany

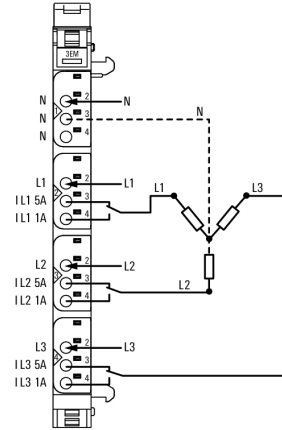
www.weidmueller.com

Drawings

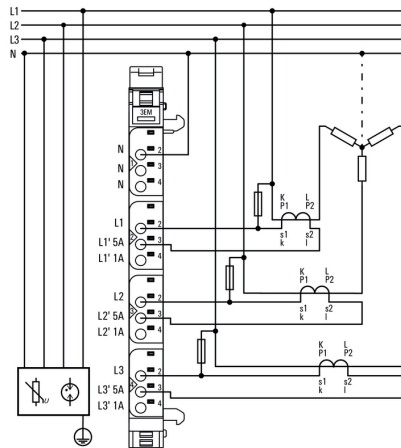
Block diagram



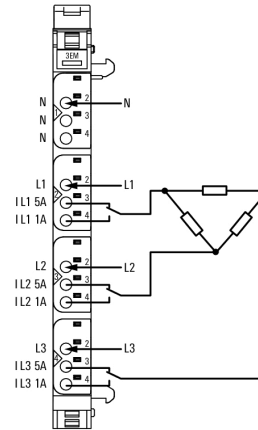
Connection diagram



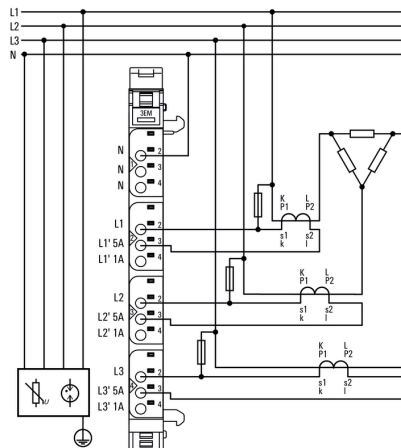
Connection diagram



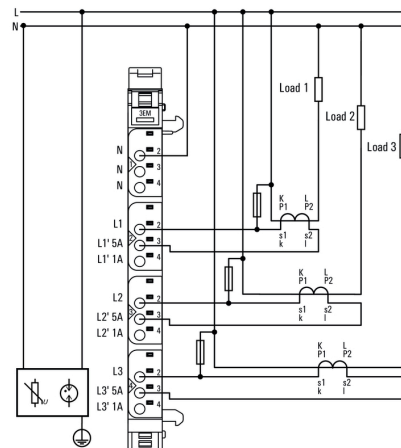
Connection diagram



Connection diagram



Connection diagram



UR20-3EM-230V-AC

Weidmüller Interface GmbH & Co. KG
 Klingenbergstraße 26
 D-32758 Detmold
 Germany

www.weidmueller.com

Accessories

Accessories

**Potential-distribution modules; system accessory**

A wide range of accessory modules is available for individual requirements of machine and plant engineering. Various potential distribution modules are available for the supply of sensors with 2- to 4-wire connection technology directly from the remote I/O system. These offer 16 "PUSH IN" potential points and supply your application with any auxiliary potential available. An empty module, where the system bus and voltage supply are looped through, allows you to plan expansion slots in a system and to start these up without any interruptions if required.

General ordering data

| | | |
|------------|----------------------------|----------------|
| Type | UR20-SM-ACC | Version |
| Order No. | 1339920000 | Cover, , |
| GTIN (EAN) | 4050118144727 | |
| Qty. | 20 pc(s). | |
| Type | UR20-EBK-ACC | Version |
| Order No. | 1346610000 | End bracket, , |
| GTIN (EAN) | 4050118151596 | |
| Qty. | 5 pc(s). | |

Stainless steel

Stainless steel is a collective term for all types of steel (alloys) with a high degree of purity and corrosion resistance.

General ordering data

| | | |
|------------|----------------------------|--|
| Type | TS 35X7.5 2M/CRN | Version |
| Order No. | 1747350000 | Rail, TS 35, TS 35 x 7.5, without slot, Stainless steel, rust-proof, |
| GTIN (EAN) | 4032248003372 | Stainless steel 1.4301, untreated |
| Qty. | 2 m | |

UR20-3EM-230V-AC

Weidmüller Interface GmbH & Co. KG
 Klingenbergstraße 26
 D-32758 Detmold
 Germany

www.weidmueller.com

Accessories

Mini current transformer



The CMA-CTM 7 series mini current transformer is an inductive current transformer designed according to the transformer principle for circular primary conductors. The CMA-CTM 7 series current transformers are maintenance-free and is designed for measuring primary currents in the range 32 A to 64 A. This is converted into a current up to 1 A on the secondary side. With its small dimensions, it perfectly suits applications in a 3-phase circuit breaker with a phase separation of 17.5 mm.

General ordering data

| | | |
|------------|----------------------------|---|
| Type | CMA-CTM-7-50-1A-0.4VA-1 | Version |
| Order No. | 2556030000 | Primary current: 50 A, Secondary current max.: 1 A, Load: 0.4 VA, |
| GTIN (EAN) | 4050118566406 | Tolerance class: 1, closed current transformer |
| Qty. | 1 pc(s). | |
| Type | CMA-CTM-7-32-1A-0.2VA-1 | Version |
| Order No. | 2525150000 | Primary current: 32 A, Secondary current max.: 1 A, Load: 0.2 VA, |
| GTIN (EAN) | 4050118536515 | Tolerance class: 1, closed current transformer |
| Qty. | 1 pc(s). | |
| Type | CMA-CTM-7-40-1A-0.3VA-1 | Version |
| Order No. | 2556040000 | Primary current: 40 A, Secondary current max.: 1 A, Load: 0.3 VA, |
| GTIN (EAN) | 4050118566413 | Tolerance class: 1, closed current transformer |
| Qty. | 1 pc(s). | |
| Type | CMA-CTM-7-60-1A-0.4VA-1 | Version |
| Order No. | 2556020000 | Primary current: 60 A, Secondary current max.: 1 A, Load: 0.4 VA, |
| GTIN (EAN) | 4050118566093 | Tolerance class: 1, closed current transformer |
| Qty. | 1 pc(s). | |
| Type | CMA-CTM-7-64-1A-0.5VA-1 | Version |
| Order No. | 2556010000 | Primary current: 64 A, Secondary current max.: 1 A, Load: 0.5 VA, |
| GTIN (EAN) | 4050118566079 | Tolerance class: 1, closed current transformer |
| Qty. | 1 pc(s). | |

UR20-3EM-230V-AC

Weidmüller Interface GmbH & Co. KG
 Klingenbergstraße 26
 D-32758 Detmold
 Germany

www.weidmueller.com

Accessories

Blank



General ordering data

| | | |
|------------|----------------------------|---|
| Type | PM 2.7/2.6 MC NE WS | Version |
| Order No. | 1323710000 | OMNIMATE Signal - series PM, Pusher markers, 2.7 x 2.6 mm, Pitch in |
| GTIN (EAN) | 4050118126778 | mm (P): 3.50 Weidmueller, white |
| Qty. | 960 pc(s). | |

Plug-on current transformer



Plug-on current transformers

Plug-on current transformers are especially suitable for mounting on the busbar. The advantages of this type are: screwless connection technology with tension clamp connection, time-saving connection option for solid and flexible conductors, shock-resistant and vibration-proof, high mechanical holding forces and high current resistance.

General ordering data

| | | |
|------------|----------------------------|--|
| Type | CMA-31-75-5A-2.5VA-1 | Version |
| Order No. | 1482040000 | Primary current: 75 A, Secondary current max.: 5 A, Load: 2.5 VA, |
| GTIN (EAN) | 4050118291087 | Tolerance class: 1, closed current transformer |
| Qty. | 1 pc(s). | |
| Type | CMA-31-600-5A-5VA-0,5 | Version |
| Order No. | 2420970000 | Primary current: 600 A, Secondary current max.: 5 A, Load: 5 VA, |
| GTIN (EAN) | 4050118429206 | Tolerance class: 0,5, closed current transformer |
| Qty. | 1 pc(s). | |
| Type | CMA-61-1500-5A-5VA-1 | Version |
| Order No. | 2680170000 | Primary current: 1500 A, Secondary current max.: 5 A, Load: 5 VA, |
| GTIN (EAN) | 4050118696523 | Tolerance class: 1, closed current transformer |
| Qty. | 1 pc(s). | |
| Type | CMA-81-2000-5A-10VA-0,5 | Version |
| Order No. | 2680240000 | Primary current: 2000 A, Secondary current max.: 5 A, Load: 10 VA, |
| GTIN (EAN) | 4050118696592 | Tolerance class: 0,5, closed current transformer |
| Qty. | 1 pc(s). | |
| Type | CMA-31-200-5A-5VA-1 | Version |
| Order No. | 2420950000 | Primary current: 200 A, Secondary current max.: 5 A, Load: 5 VA, |
| GTIN (EAN) | 4050118429190 | Tolerance class: 1, closed current transformer |
| Qty. | 1 pc(s). | |

UR20-3EM-230V-AC

Weidmüller Interface GmbH & Co. KG

Klingenbergstraße 26

D-32758 Detmold

Germany

www.weidmueller.com

Accessories

| | | |
|------------|----------------------------|--|
| Type | CMA-61-1500-5A-5VA-0,5 | Version |
| Order No. | 2680230000 | Primary current: 1500 A, Secondary current max.: 5 A, Load: 5 VA, |
| GTIN (EAN) | 4050118696585 | Tolerance class: 0,5, closed current transformer |
| Qty. | 1 pc(s). | |
| Type | CMA-31-250-5A-5VA-0,5 | Version |
| Order No. | 1482050000 | Primary current: 250 A, Secondary current max.: 5 A, Load: 5 VA, |
| GTIN (EAN) | 4050118291094 | Tolerance class: 0,5, closed current transformer |
| Qty. | 1 pc(s). | |
| Type | CMA-31-750-5A-5VA-0,5 | Version |
| Order No. | 1482080000 | Primary current: 750 A, Secondary current max.: 5 A, Load: 5 VA, |
| GTIN (EAN) | 4050118290950 | Tolerance class: 0,5, closed current transformer |
| Qty. | 1 pc(s). | |
| Type | CMA-81-2000-5A-10VA-1 | Version |
| Order No. | 2680180000 | Primary current: 2000 A, Secondary current max.: 5 A, Load: 10 VA, |
| GTIN (EAN) | 4050118696530 | Tolerance class: 1, closed current transformer |
| Qty. | 1 pc(s). | |
| Type | CMA-31-150-5A-5VA-1 | Version |
| Order No. | 2420960000 | Primary current: 150 A, Secondary current max.: 5 A, Load: 5 VA, |
| GTIN (EAN) | 4050118429091 | Tolerance class: 1, closed current transformer |
| Qty. | 1 pc(s). | |
| Type | CMA-41-1000-5A-5VA-0,5 | Version |
| Order No. | 2680210000 | Primary current: 1000 A, Secondary current max.: 5 A, Load: 5 VA, |
| GTIN (EAN) | 4050118696547 | Tolerance class: 0,5, closed current transformer |
| Qty. | 1 pc(s). | |
| Type | CMA-31-300-5A-5VA-0,5 | Version |
| Order No. | 2420990000 | Primary current: 300 A, Secondary current max.: 5 A, Load: 5 VA, |
| GTIN (EAN) | 4050118429220 | Tolerance class: 0,5, closed current transformer |
| Qty. | 1 pc(s). | |
| Type | CMA-51-1250-5A-5VA-1 | Version |
| Order No. | 2680160000 | Primary current: 1250 A, Secondary current max.: 5 A, Load: 5 VA, |
| GTIN (EAN) | 4050118696509 | Tolerance class: 1, closed current transformer |
| Qty. | 1 pc(s). | |
| Type | CMA-31-400-5A-5VA-0,5 | Version |
| Order No. | 2420980000 | Primary current: 400 A, Secondary current max.: 5 A, Load: 5 VA, |
| GTIN (EAN) | 4050118429305 | Tolerance class: 0,5, closed current transformer |
| Qty. | 1 pc(s). | |
| Type | CMA-31-400-5A-5VA-1 | Version |
| Order No. | 2420920000 | Primary current: 400 A, Secondary current max.: 5 A, Load: 5 VA, |
| GTIN (EAN) | 4050118428964 | Tolerance class: 1, closed current transformer |
| Qty. | 1 pc(s). | |
| Type | CMA-31-750-5A-5VA-1 | Version |
| Order No. | 2420890000 | Primary current: 750 A, Secondary current max.: 5 A, Load: 5 VA, |
| GTIN (EAN) | 4050118429084 | Tolerance class: 1, closed current transformer |
| Qty. | 1 pc(s). | |
| Type | CMA-101-2500-5A-10VA-1 | Version |
| Order No. | 2680190000 | Primary current: 2500 A, Secondary current max.: 5 A, Load: 10 VA, |
| GTIN (EAN) | 4050118696516 | Tolerance class: 1, closed current transformer |
| Qty. | 1 pc(s). | |
| Type | CMA-101-2500-5A-10VA-0,5 | Version |
| Order No. | 2680250000 | Primary current: 2500 A, Secondary current max.: 5 A, Load: 10 VA, |
| GTIN (EAN) | 4050118696608 | Tolerance class: 0,5, closed current transformer |
| Qty. | 1 pc(s). | |

Creation date February 20, 2023 5:15:23 PM CET

Catalogue status 03.02.2023 / We reserve the right to make technical changes.

9

UR20-3EM-230V-AC

Weidmüller Interface GmbH & Co. KG

Klingenbergstraße 26

D-32758 Detmold

Germany

www.weidmueller.com

Accessories

| | | |
|------------|----------------------------|--|
| Type | CMA-41-1000-5A-5VA-1 | Version |
| Order No. | 2680150000 | Primary current: 1000 A, Secondary current max.: 5 A, Load: 5 VA, |
| GTIN (EAN) | 4050118696493 | Tolerance class: 1, closed current transformer |
| Qty. | 1 pc(s). | |
| Type | CMA-31-60-5A-1,25VA-1 | Version |
| Order No. | 2421380000 | Primary current: 60 A, Secondary current max.: 5 A, Load: 1.25 VA, |
| GTIN (EAN) | 4050118429381 | Tolerance class: 1, closed current transformer |
| Qty. | 1 pc(s). | |
| Type | CMA-31-600-5A-5VA-1 | Version |
| Order No. | 2420900000 | Primary current: 600 A, Secondary current max.: 5 A, Load: 5 VA, |
| GTIN (EAN) | 4050118429176 | Tolerance class: 1, closed current transformer |
| Qty. | 1 pc(s). | |
| Type | CMA-31-500-5A-5VA-0,5 | Version |
| Order No. | 1482070000 | Primary current: 500 A, Secondary current max.: 5 A, Load: 5 VA, |
| GTIN (EAN) | 4050118291100 | Tolerance class: 0,5, closed current transformer |
| Qty. | 1 pc(s). | |
| Type | CMA-31-250-5A-5VA-1 | Version |
| Order No. | 2420940000 | Primary current: 250 A, Secondary current max.: 5 A, Load: 5 VA, |
| GTIN (EAN) | 4050118429183 | Tolerance class: 1, closed current transformer |
| Qty. | 1 pc(s). | |
| Type | CMA-31-200-5A-2,5VA-0,5 | Version |
| Order No. | 2421020000 | Primary current: 200 A, Secondary current max.: 5 A, Load: 2.5 VA, |
| GTIN (EAN) | 4050118428988 | Tolerance class: 0,5, closed current transformer |
| Qty. | 1 pc(s). | |
| Type | CMA-31-150-5A-2,5VA-0,5 | Version |
| Order No. | 2421030000 | Primary current: 150 A, Secondary current max.: 5 A, Load: 2.5 VA, |
| GTIN (EAN) | 4050118428971 | Tolerance class: 0,5, closed current transformer |
| Qty. | 1 pc(s). | |
| Type | CMA-51-1250-5A-5VA-0,5 | Version |
| Order No. | 2680220000 | Primary current: 1250 A, Secondary current max.: 5 A, Load: 5 VA, |
| GTIN (EAN) | 4050118696561 | Tolerance class: 0,5, closed current transformer |
| Qty. | 1 pc(s). | |
| Type | CMA-31-500-5A-5VA-1 | Version |
| Order No. | 2420910000 | Primary current: 500 A, Secondary current max.: 5 A, Load: 5 VA, |
| GTIN (EAN) | 4050118429169 | Tolerance class: 1, closed current transformer |
| Qty. | 1 pc(s). | |
| Type | CMA-31-100-5A-2,5VA-1 | Version |
| Order No. | 1482030000 | Primary current: 100 A, Secondary current max.: 5 A, Load: 2.5 VA, |
| GTIN (EAN) | 4050118290943 | Tolerance class: 1, closed current transformer |
| Qty. | 1 pc(s). | |
| Type | CMA-31-125-5A-2,5VA-0,5 | Version |
| Order No. | 2680200000 | Primary current: 125 A, Secondary current max.: 5 A, Load: 2.5 VA, |
| GTIN (EAN) | 4050118696578 | Tolerance class: 0,5, closed current transformer |
| Qty. | 1 pc(s). | |

UR20-3EM-230V-AC

Weidmüller Interface GmbH & Co. KG
 Klingenbergstraße 26
 D-32758 Detmold
 Germany

www.weidmueller.com

Accessories

Cable-type current transformer

**Cable-type current transformer**

The cable-type current transformer is mainly used for retrofitting in order to avoid cutting the primary conductors.

Due to its dimensions and the convenient handling, the cable-type current transformer is particularly suitable for use in places that are difficult to access or where space is limited.

The "click" system in conjunction with the fixing clamps even makes "one-handed" installation possible.

General ordering data

| | | |
|------------|----------------------------|---|
| Type | KCMA-18-100-1A-1,25VA-3 | Version |
| Order No. | 1482010000 | Primary current: 100 A, Secondary current max.: 1 A, Load: 1.25 VA, |
| GTIN (EAN) | 4050118290851 | Tolerance class: 3, Split-core current transformer |
| Qty. | 1 pc(s). | |
| Type | KCMA-18-200-1A-3VA-3 | Version |
| Order No. | 2420760000 | Primary current: 200 A, Secondary current max.: 1 A, Load: 3 VA, |
| GTIN (EAN) | 4050118428933 | Tolerance class: 3, Split-core current transformer |
| Qty. | 1 pc(s). | |
| Type | KCMA-18-50-1A-1VA-3 | Version |
| Order No. | 1482020000 | Primary current: 50 A, Secondary current max.: 1 A, Load: 1 VA, |
| GTIN (EAN) | 4050118290844 | Tolerance class: 3, Split-core current transformer |
| Qty. | 1 pc(s). | |
| Type | KCMA-18-50-1A-1VA-3 HUT | Version |
| Order No. | 2511690000 | Primary current: 50 A, Secondary current max.: 1 A, Load: 1 VA, |
| GTIN (EAN) | 4050118527643 | Tolerance class: 3, Split-core current transformer |
| Qty. | 1 pc(s). | |
| Type | KCMA-18-150-1A-2VA-3 | Version |
| Order No. | 2420770000 | Primary current: 150 A, Secondary current max.: 1 A, Load: 2 VA, |
| GTIN (EAN) | 4050118429107 | Tolerance class: 3, Split-core current transformer |
| Qty. | 1 pc(s). | |
| Type | KCMA-18-250-1A-4VA-3 | Version |
| Order No. | 2420750000 | Primary current: 250 A, Secondary current max.: 1 A, Load: 4 VA, |
| GTIN (EAN) | 4050118428926 | Tolerance class: 3, Split-core current transformer |
| Qty. | 1 pc(s). | |
| Type | KCMA-18-250-1A-1,5VA-1 | Version |
| Order No. | 1482000000 | Primary current: 250 A, Secondary current max.: 1 A, Load: 1.5 VA, |
| GTIN (EAN) | 4050118291070 | Tolerance class: 1, Split-core current transformer |
| Qty. | 1 pc(s). | |
| Type | KCMA-44-750-5A-5VA-1 | Version |
| Order No. | 2420710000 | Primary current: 750 A, Secondary current max.: 5 A, Load: 5 VA, |
| GTIN (EAN) | 4050118428919 | Tolerance class: 1, Split-core current transformer |
| Qty. | 1 pc(s). | |
| Type | KCMA-18-75-1A-1VA-3 | Version |
| Order No. | 2420780000 | Primary current: 75 A, Secondary current max.: 1 A, Load: 1 VA, |
| GTIN (EAN) | 4050118428896 | Tolerance class: 3, Split-core current transformer |
| Qty. | 1 pc(s). | |

UR20-3EM-230V-AC

Weidmüller Interface GmbH & Co. KG
 Klingenbergstraße 26
 D-32758 Detmold
 Germany

www.weidmueller.com

Accessories

Custom printing



The Dekafix (DEK) marker is the universal marker for all conductor and plug-in connectors as well as for electronic sub-assemblies. The system is ideal for short number sequences and covers a wide range of ready-printed markers.

Strips for fast installation in only one work step. The printing is easy to read, rich in contrast and available in various widths.

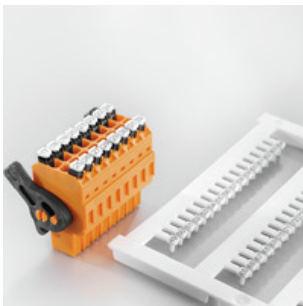
- Large range of ready-to-use markers
- Strips for fast installation
- Terminal markers, suitable for all Weidmüller cable connectors
- Available as blank MultiCard or with standard printing

For custom printing: Please send us a file of our labeling software M-Print PRO or M-Print PRO Online (without installation) for your labeling specifications.

General ordering data

| | | | |
|------------|----------------------------|---------|---|
| Type | DEK 5/8-11.5 MC SDR | Version | |
| Order No. | 1341610000 | | Dekafix, Terminal marker, 5 x 8 mm, Pitch in mm (P): 8.00 |
| GTIN (EAN) | 4050118146059 | | Weidmueller, To customer specification |
| Qty. | 100 pc(s). | | |

Custom printing



General ordering data

| | | | |
|------------|----------------------------|---------|---|
| Type | PM 2.7/2.6 MC SDR | Version | |
| Order No. | 1323700000 | | OMNIMATE Signal - series PM, Pusher markers, 2.7 x 2.6 mm, Pitch in mm (P): 3.50 Weidmueller, To customer specification |
| GTIN (EAN) | 4050118126761 | | |
| Qty. | 192 pc(s). | | |

UR20-3EM-230V-AC

Weidmüller Interface GmbH & Co. KG

Klingenbergstraße 26

D-32758 Detmold

Germany

www.weidmueller.com

Accessories

Aluminum



Aluminum has the second best electrical conductivity after copper. One advantage is low weight, anMiscellaneous is outstanding corrosion protection.

General ordering data

| | | |
|------------|----------------------------|--|
| Type | TS 35X7.5 2M/AL/BK | Version |
| Order No. | 0330800000 | Rail, TS 35, TS 35 x 7.5, without slot, Aluminium, untreated |
| GTIN (EAN) | 4008190100650 | |
| Qty. | 2 m | |

Difference current transformer (Residual current monitoring, RCM)

**Difference current transformer** (Residual current monitoring, RCM)

This type is specialised in the detection of residual currents in 3 / 4-wire AC networks.

Its special features are:

Highly sensitive current sensor for the detection of even the smallest residual currents, fixed switching hysteresis of 5%, high safety thanks to integrated overvoltage protection and coverage of a wide frequency range.

General ordering data

| | | |
|------------|----------------------------|---|
| Type | CMA-RCM-DACT-35 | Version |
| Order No. | 2603430000 | Residual current transformer, Primary current: 25 A, Round conductor: |
| GTIN (EAN) | 4050118665413 | 35.00 mm, closed current transformer |
| Qty. | 1 pc(s). | |
| Type | KCMA-RCM-812D | Version |
| Order No. | 2656290000 | Residual current transformer (RCM), Primary current: 18 A, Round |
| GTIN (EAN) | 4050118666342 | conductor: 80.00 mm, Split-core current transformer |
| Qty. | 1 pc(s). | |
| Type | KCMA-RCM-58D | Version |
| Order No. | 2656280000 | Residual current transformer (RCM), Primary current: 18 A, Round |
| GTIN (EAN) | 4050118666359 | conductor: 50.00 mm, Split-core current transformer |
| Qty. | 1 pc(s). | |
| Type | KCMA-RCM-23D | Version |
| Order No. | 2656270000 | Residual current transformer (RCM), Primary current: 18 A, Round |
| GTIN (EAN) | 4050118666366 | conductor: 20.00 mm, Split-core current transformer |
| Qty. | 1 pc(s). | |
| Type | CMA-RCM-DACT-20 | Version |
| Order No. | 2603420000 | Residual current transformer, Primary current: 25 A, Round conductor: |
| GTIN (EAN) | 4050118665420 | 20.00 mm, closed current transformer |
| Qty. | 1 pc(s). | |

UR20-3EM-230V-AC

Weidmüller Interface GmbH & Co. KG
 Klingenbergstraße 26
 D-32758 Detmold
 Germany

www.weidmueller.com

Accessories

| | | |
|------------|----------------------------|---|
| Type | CMA-RCM-DACT-120 | Version |
| Order No. | 2603450000 | Residual current transformer, Primary current: 25 A, Round conductor: |
| GTIN (EAN) | 4050118665406 | 120.00 mm, closed current transformer |
| Qty. | 1 pc(s). | |
| Type | CMA-RCM-DACT-60 | Version |
| Order No. | 2603440000 | Residual current transformer, Primary current: 25 A, Round conductor: |
| GTIN (EAN) | 4050118663594 | 60.00 mm, closed current transformer |
| Qty. | 1 pc(s). | |

Steel



Steel DIN rails are the most widespread on the market. Among metal DIN rails, they have the lowest shortcircuit protection, similar to stainless steel.

General ordering data

| | | |
|------------|----------------------------|--|
| Type | TS 35X7.5/LL 2M/ST/ZN | Version |
| Order No. | 0514500000 | Rail, TS 35, TS 35 x 7.5, with slot, Steel, galvanic zinc plated and passivated |
| GTIN (EAN) | 4008190046019 | |
| Qty. | 2 m | |
| Type | TS 35X7.5/LL 1M/ST/ZN | Version |
| Order No. | 0514510000 | Rail, TS 35, TS 35 x 7.5, with slot, Steel, galvanic zinc plated and passivated |
| GTIN (EAN) | 4008190116620 | |
| Qty. | 1 m | |
| Type | TS 35X7.5/LL 2M/ST/SZ | Version |
| Order No. | 7915060000 | Rail, TS 35, TS 35 x 7.5, with slot, Steel, galvanic zinc plated and passivated |
| GTIN (EAN) | 4032248296279 | |
| Qty. | 2 m | |
| Type | TS 35X7.5 2M/ST/ZN | Version |
| Order No. | 0383400000 | Rail, TS 35, TS 35 x 7.5, without slot, Steel, galvanic zinc plated and passivated |
| GTIN (EAN) | 4008190088026 | |
| Qty. | 2 m | |

UR20-3EM-230V-AC

Weidmüller Interface GmbH & Co. KG
 Klingenbergstraße 26
 D-32758 Detmold
 Germany

www.weidmueller.com

Accessories

Blank



The Dekafix (DEK) marker is the universal marker for all conductor and plug-in connectors as well as for electronic sub-assemblies. The system is ideal for short number sequences and covers a wide range of ready-printed markers.

Strips for fast installation in only one work step. The printing is easy to read, rich in contrast and available in various widths.

- Large range of ready-to-use markers
- Strips for fast installation
- Terminal markers, suitable for all Weidmüller cable connectors
- Available as blank MultiCard or with standard printing

For custom printing: Please send us a file of our labeling software M-Print PRO or M-Print PRO Online (without installation) for your labeling specifications.

General ordering data

| | | | |
|------------|----------------------------|---------|---|
| Type | DEK 5/8-11.5 MC NE WS | Version | |
| Order No. | 1341630000 | | Dekafix, Terminal marker, 5 x 8 mm, Pitch in mm (P): 8.00 |
| GTIN (EAN) | 4050118145946 | | Weidmueller, white |
| Qty. | 500 pc(s). | | |

UR20-3EM-230V-AC

Weidmüller Interface GmbH & Co. KG
 Klingenbergstraße 26
 D-32758 Detmold
 Germany

www.weidmueller.com

Replacement parts

Electronic modules



General ordering data

| | | |
|------------|----------------------------|------------------|
| Type | UR20-EM-2007420000-SP | Version |
| Order No. | 1562270000 | Replacement part |
| GTIN (EAN) | 4050118367249 | |
| Qty. | 1 pc(s). | |

Plugkit



General ordering data

| | | |
|------------|----------------------------|------------------|
| Type | UR20-PK-2007420000-SP | Version |
| Order No. | 2068630000 | Replacement part |
| GTIN (EAN) | 4050118416817 | |
| Qty. | 5 pc(s). | |

Data sheet**UR20-3EM-230V-AC**

Weidmüller Interface GmbH & Co. KG
Klingenbergstraße 26
D-32758 Detmold
Germany

www.weidmueller.com

Replacement parts**Basic modules****General ordering data**

| Type | UR20-BM-SP | Version | Packaging |
|------------|----------------------------|---|-----------|
| Order No. | 1350930000 | Replacement part , Flange-mounted housing | Cardboard |
| GTIN (EAN) | 4050118402735 | | box |
| Qty. | 5 pc(s). | | |

Data sheet

UR20-3EM-230V-AC

Weidmüller Interface GmbH & Co. KG
Klingenbergstraße 26
D-32758 Detmold
Germany

www.weidmueller.com

Drawings

Explanation of abbreviations

Power measurement module

