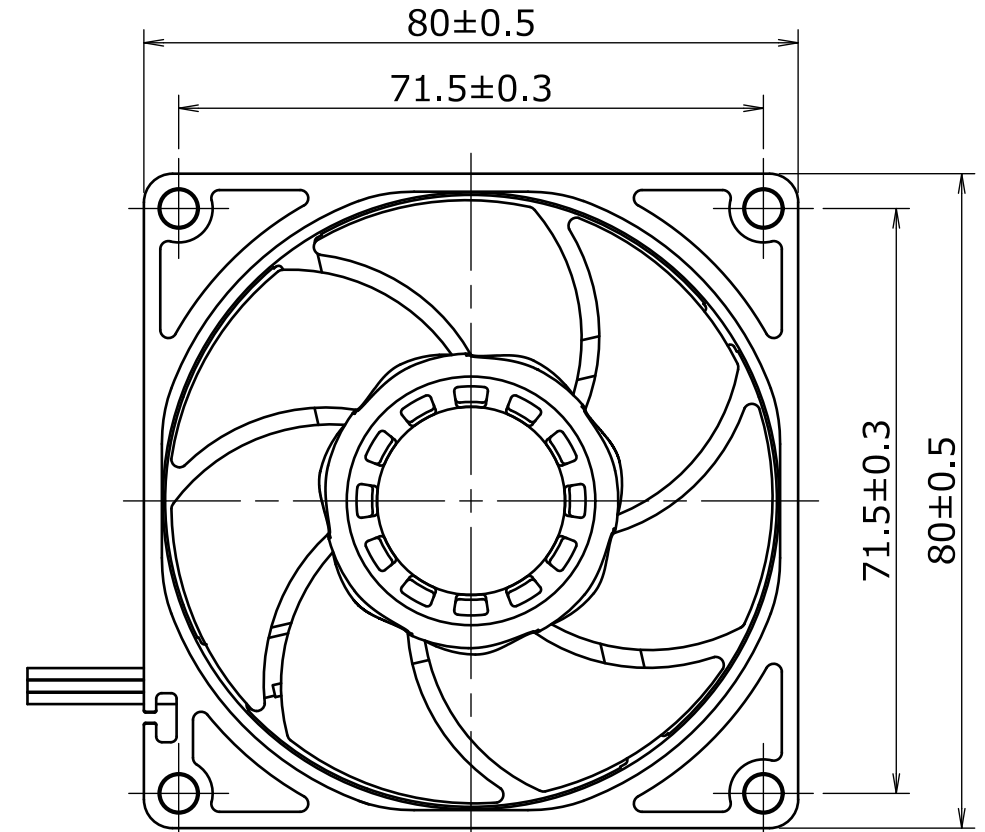
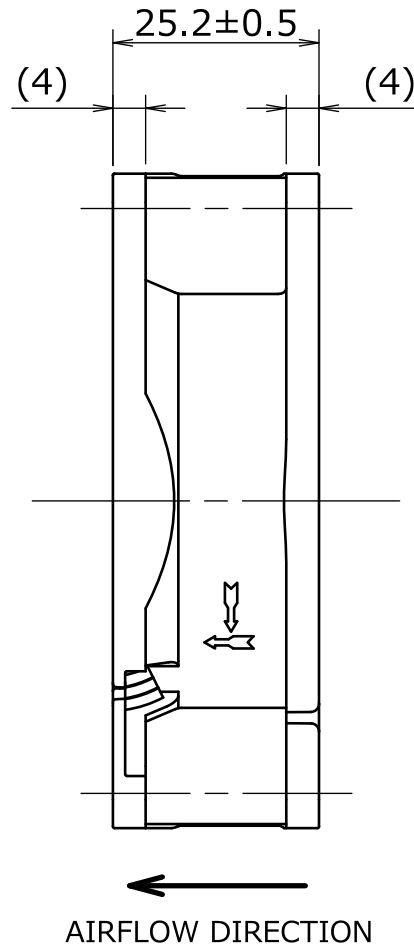
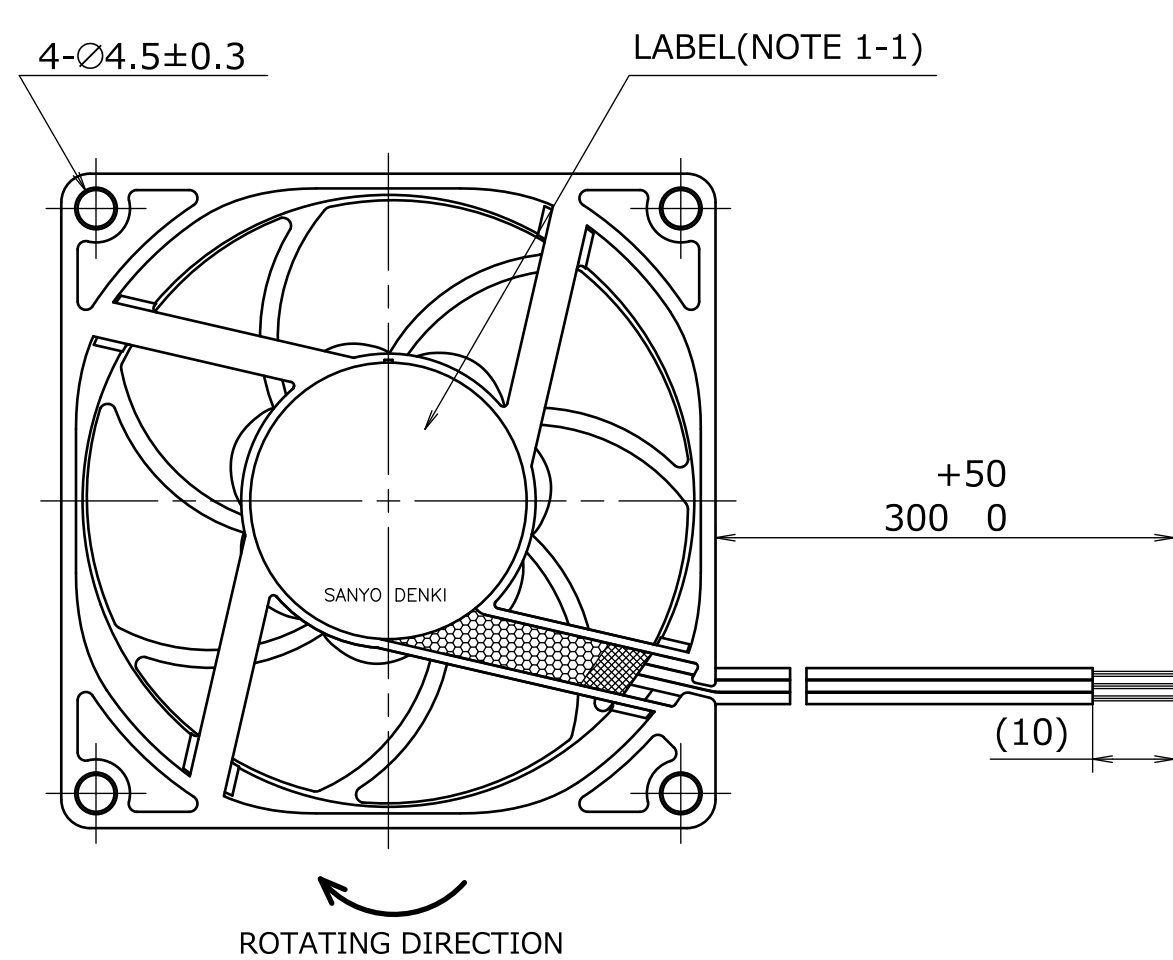


1. DIMENSIONS AND PARTS LIST

<DIMENSIONS>



NOTE 1-1. THE PRODUCT NAME, MODEL NO., MANUFACTURER, MANUFACTURE DATE, ETC. ARE PRINTED ON LABEL.
 銘板上に品名、型名、製造会社及び製造年月日等を表示する。
 1-2. THE ELECTRICAL LIVE PARTS OF THIS FAN ARE COATED WITH RESIN.
 本ファンモータは、活電部に樹脂コーティングを施している。

<LEAD WIRE CONNECTION TABLE>

FAN		
SIGNAL	LEAD WIRE	COLOR
+	UL1430 AWG26	RED
GND	UL1430 AWG26	BLACK
SENSOR	UL1430 AWG26	YELLOW

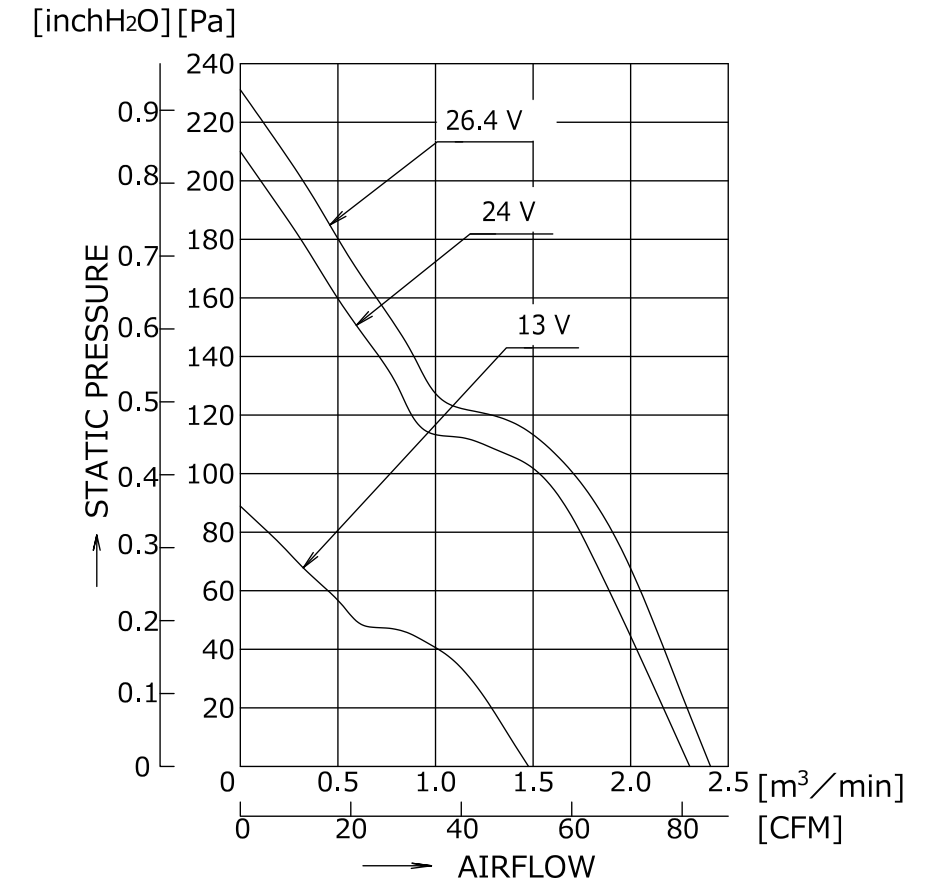
	ECN No.	名称 Title		
	E0204670	San Ace 80W (9WPA) RIBBED/PULSE_SENSOR		
単位 Unit	新規 New Design	Rev.		
mm	T.KAISE 20-10-27	9WPA0824G4201 B		
尺度 Scale	図面番号 Dwg. No.			
-	-			
		承認 Approved By	審査 Checked By	設計 Designed By
		T.IKEDA 20-11-13	M.TAKAKUWA 20-11-12	T.KAISE 20-11-12
Group	D12K	User	E0	Page
				1/3

2. DESCRIPTION AND AIRFLOW-STATIC PRESSURE CHARACTERISTICS EXAMPLE

<DESCRIPTION>

ITEM	UNIT	DESCRIPTION
RATED VOLTAGE	V DC	24
OPERATING VOLTAGE RANGE	V DC	13 ~ 26.4
MAX. AIRFLOW	m ³ /min	2.32
(NOTE 2-2)	(CFM)	(81.9)
MAX. STATIC PRESSURE	Pa	210
(NOTE 2-2)	(inchH ₂ O)	(0.84)
RATED CURRENT	A	0.36
(NOTE 2-2)		
RATED SPEED	min ⁻¹	8250±825
INSULATION RESISTANCE	-	10 MΩ MIN. AT 500 V DC
(NOTE 2-3)		
DIELECTRIC STRENGTH	-	1 MINUTE AT 500 V AC, 50/60 Hz
(NOTE 2-3)		
OPERATING TEMPERATURE	°C	-40 ~ +70
STORAGE TEMPERATURE	°C	-40 ~ +70
EXPECTED LIFE	-	40,000 h / 60 °C (L10, CONTINUOUS OPERATION)
SOUND PRESSURE LEVEL	dB(A)	54
(NOTE 2-2, 2-4)		
MASS	g	APPROX. 130
MATERIAL	-	FRAME, IMPELLER : PLASTICS
BEARING SYSTEM	-	2 BALL BEARINGS
IP CODE	-	IP68(IEC 60529:2001)

<AIRFLOW-STATIC PRESSURE CHARACTERISTICS EXAMPLE>



- NOTE 2-1. VALUES FOR EACH CHARACTERISTIC ARE AT ROOM TEMPERATURE AND NORMAL HUMIDITY.
諸特性は常温、常湿での値。
- 2-2. ALL VALUES ARE TYPICAL UNLESS OTHERWISE SPECIFIED.
指定なき値は標準値。
- 2-3. INSULATION RESISTANCE AND DIELECTRIC STRENGTH ARE MEASURED BETWEEN LEAD WIRE CONDUCTORS AND FRAME.
絶縁抵抗および絶縁耐圧はリード線導体部とフレームとの間を測定する。
- 2-4. SOUND PRESSURE LEVEL (SPL) IS MEASURED AT 1 m FROM THE AIR INLET.
音圧レベルはファン吸込側より1mにて測定する。
- 2-5. WITHIN THE OPERATING VOLTAGE RANGE, THE MOTOR IS PROTECTED FROM BURNOUT DUE TO LOCKED ROTOR.
使用電圧範囲にてファン拘束時焼損の恐れはない。

	ECN No. E0204670	名称 Title San Ace 80W (9WPA) RIBBED/PULSE_SENSOR	
	単位 Unit mm	新規 New Design T.KAISE 20-10-27	
尺度 Scale -	図面番号 Dwg. No.	Rev. 9WPA0824G4201 B	
	承認 Approved By T.IKEDA 20-11-13	審査 Checked By M.TAKAKUWA 20-11-12	設計 Designed By T.KAISE 20-11-12
	Group D12K	User E0	Page 2/3

3. SENSOR SPECIFICATIONS

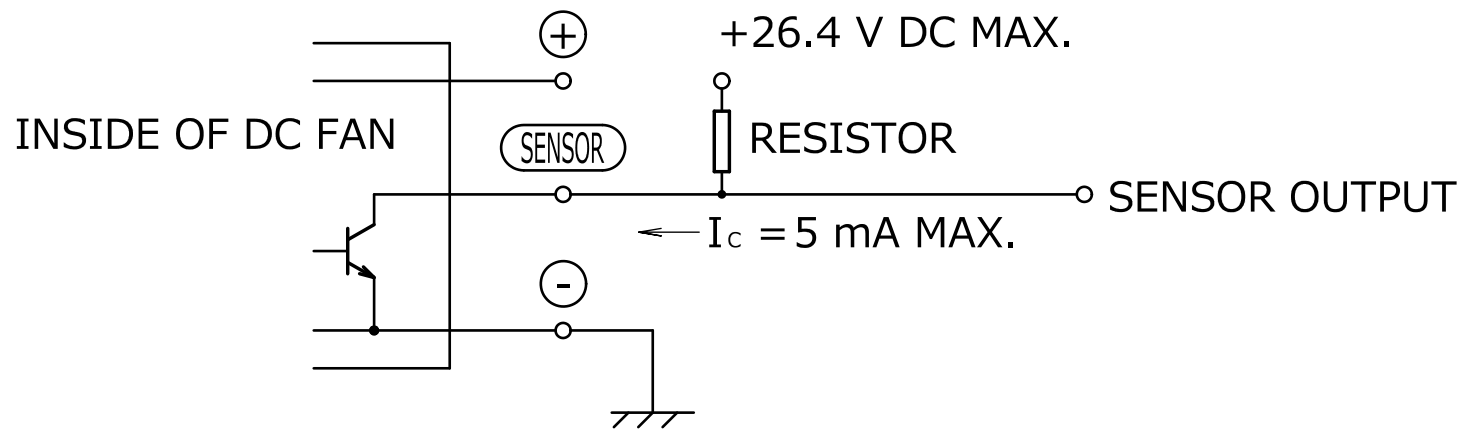
<OUTPUT CIRCUIT>

OPEN COLLECTOR

<SPECIFICATIONS>

$V_{CE} = +26.4 \text{ V DC MAX.}$

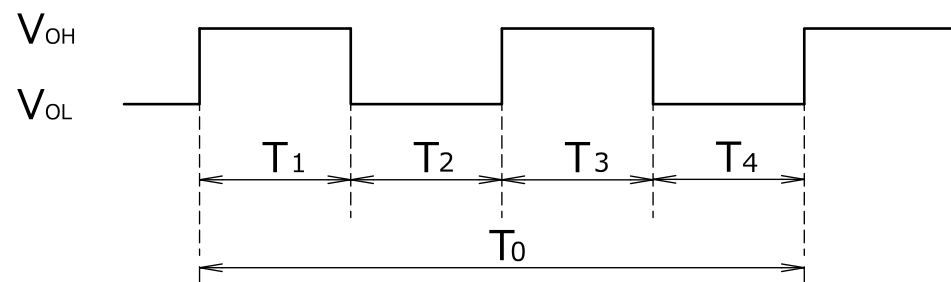
$I_C = 5 \text{ mA MAX. (} V_{CE} \text{ (SAT)} = 0.8 \text{ V MAX.)}$



<OUTPUT WAVEFORM>

(a) IN CASE OF STEADY RUNNING

ONE REVOLUTION



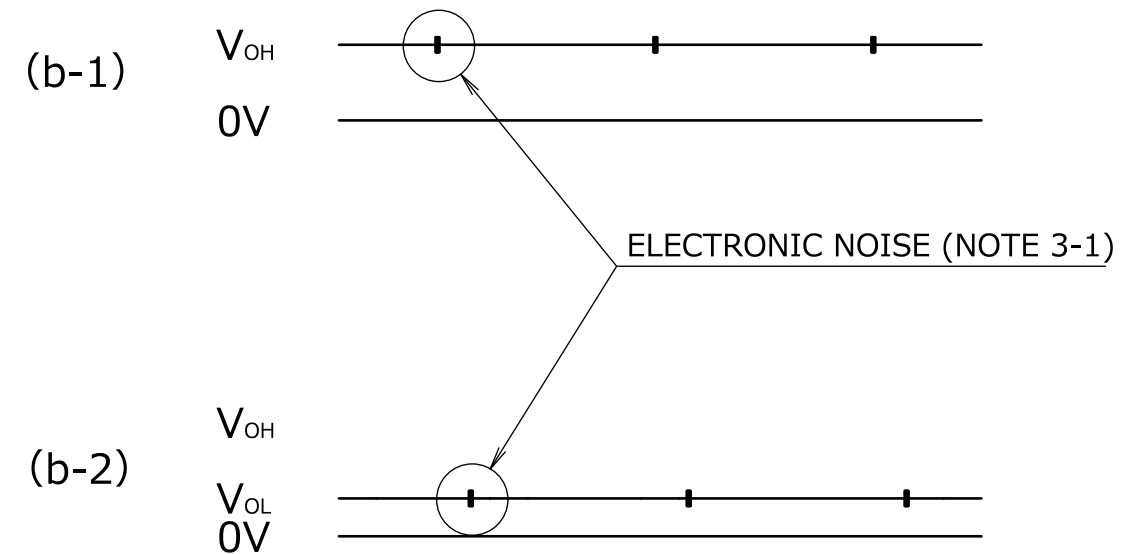
$$T_{1 \text{ to } 4} \cong (1/4) T_0$$

$$T_{1 \text{ to } 4} \cong (1/4) T_0 = 60/4 \text{ N (s)}$$

$$N = \text{FAN SPEED (min}^{-1}\text{)}$$

(b) IN CASE OF STEADY LOCKED ROTOR

SENSOR OUTPUT IS FIXED EITHER (b-1) OR (b-2).
センサー出力は(b-1)あるいは(b-2)のどちらかに固定される。



NOTE 3-1. ELECTRONIC NOISE MAY APPEAR ON THE V_{OH} OR V_{OL} WHEN THE FAN IS AUTO-RESTARTED.
モータの再起動の際には、 V_{OH} あるいは V_{OL} にノイズが載ることがある。

	ECN No.	名称 Title	
	E0204670	San Ace 80W (9WPA) RIBBED/PULSE_SENSOR	
単位 Unit	新規 New Design		
mm	T.KAISE 20-10-27		
尺度 Scale	図面番号 Dwg. No.	9WPA0824G4201	Rev.
-			B
SANYO DENKI	承認 Approved By	審査 Checked By	設計 Designed By
	T.IKEDA 20-11-13	M.TAKAKUWA 20-11-12	T.KAISE 20-11-12
Group	D12K	User	E0
A 3 G - P 5		Page 3/3	