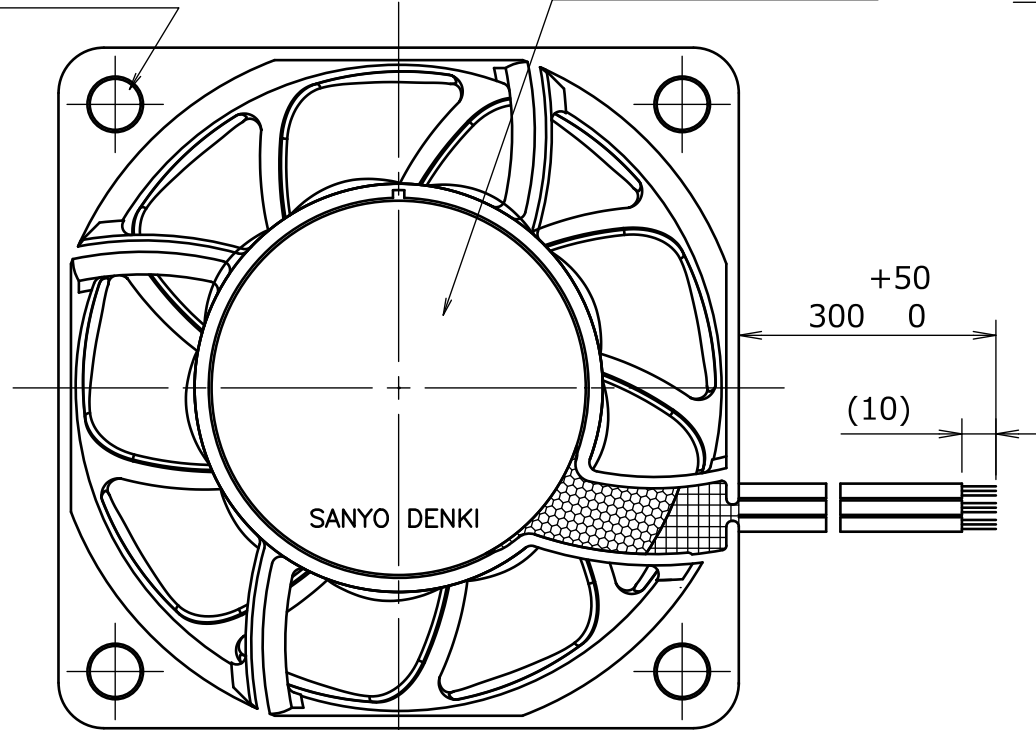


# 1. DIMENSIONS AND PARTS LIST

<DIMENSIONS>

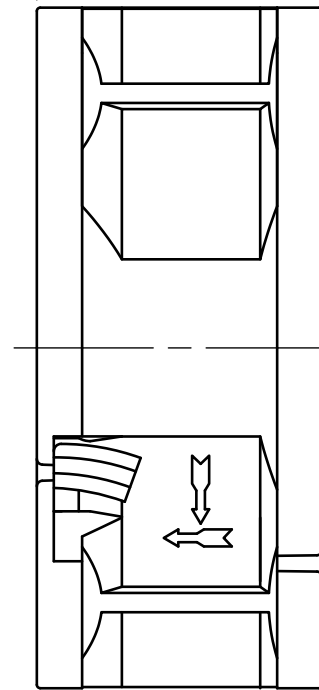
8- $\varnothing$ 4.5 $\pm$ 0.3

LABEL(NOTE 1-1)

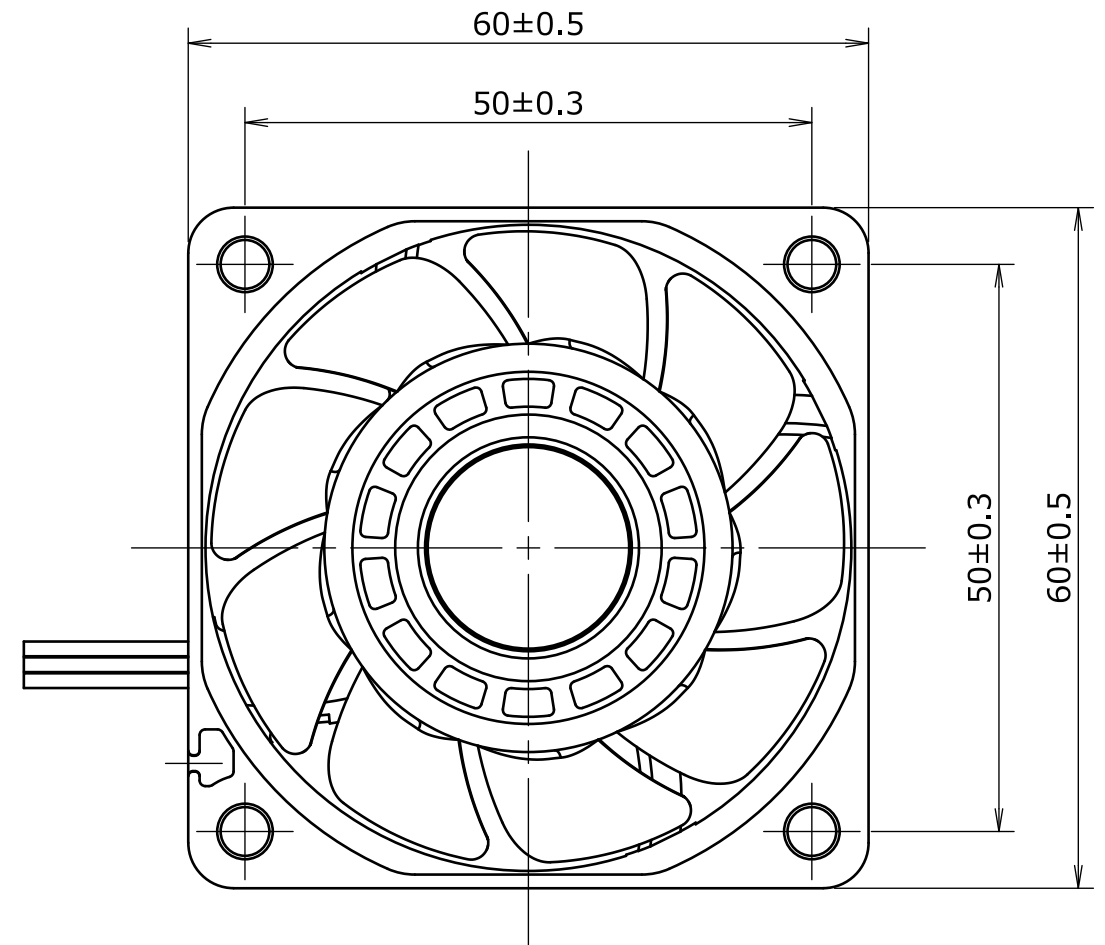


ROTATING DIRECTION

25 $\pm$ 0.5  
4 $\pm$ 0.3 4 $\pm$ 0.3



AIRFLOW DIRECTION



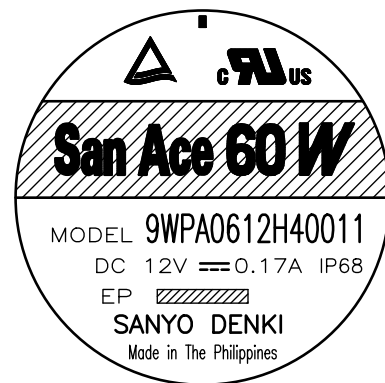
NOTE 1-1. THE PRODUCT NAME, MODEL NO., MANUFACTURER, MANUFACTURE DATE, ETC. ARE PRINTED ON LABEL.  
品名, 型名, 製造会社名 及び 製造年月日等を表示する。

<LABEL>

SHOWS LOT No.  
 はロットNo.を示す。



OR



<LEAD WIRE CONNECTION TABLE>

FAN		
	LEAD WIRE	COLOR
+	UL1430 AWG26	RED
GND	UL1430 AWG26	BLACK
SENSOR	UL1430 AWG26	YELLOW

	ECN No.	名称 Title	San Ace 60W (9WPA) RIBLESS/PULSE_SENSOR	
単位 Unit	mm	新規 New Design	TOS.NISHIZAWA 23-01-24	
尺度 Scale	-	図面番号 Dwg. No.	9WPA0612H40011	Rev. A
<b>SANYO DENKI</b>		<b>SANYO DENKI CO.,LTD. ISSUED</b>	承認 Approved By H.KURIBAYASHI 23-01-26	審査 Checked By K.ISHIHARA 23-01-25
Group	D12	User	E0	設計 Designed By TOS.NISHIZAWA 23-01-24
			Page	1/3

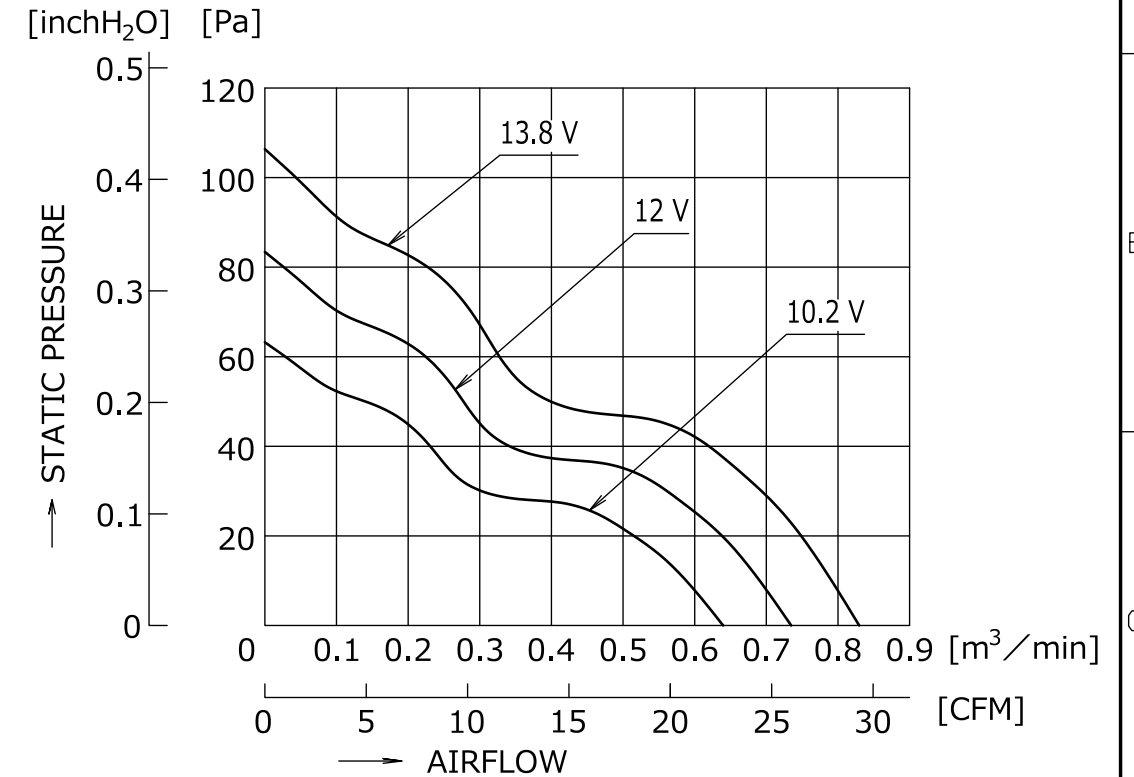
A 3 G - # 5

## 2. GENERAL SPECIFICATIONS

### <CHARACTERISTICS>

ITEM	UNIT	CHARACTERISTICS
RATED VOLTAGE	V DC	12
OPERATING VOLTAGE RANGE	V DC	10.2 ~ 13.8
MAX. AIRFLOW	m <sup>3</sup> /min (CFM)	0.73 (25.8)
MAX. STATIC PRESSURE	Pa (inchH <sub>2</sub> O)	83.4 (0.33)
RATED CURRENT	A	0.17
RATED SPEED	min <sup>-1</sup>	5800±580
INSULATION RESISTANCE (NOTE 2-2)	-	10 MΩ MIN. AT 500 V DC
DIELECTRIC STRENGTH (NOTE 2-2)	-	1 MINUTE AT 500 V AC, 50/60 Hz
OPERATING TEMPERATURE	°C	-20 ~ +70
STORAGE TEMPERATURE	°C	-30 ~ +70
EXPECTED LIFE	-	40,000 h / 60 °C (L10, CONTINUOUS OPERATION)
SOUND PRESSURE LEVEL (NOTE 2-3)	dB(A)	36
MASS	g	APPROX. 110
MATERIAL	-	FRAME, IMPELLER : PLASTICS
BEARING SYSTEM	-	2 BALL BEARINGS
IP CODE	-	IP68 (IEC 60529)

### <REFERENCE AIRFLOW-STATIC PRESSURE CHARACTERISTICS>

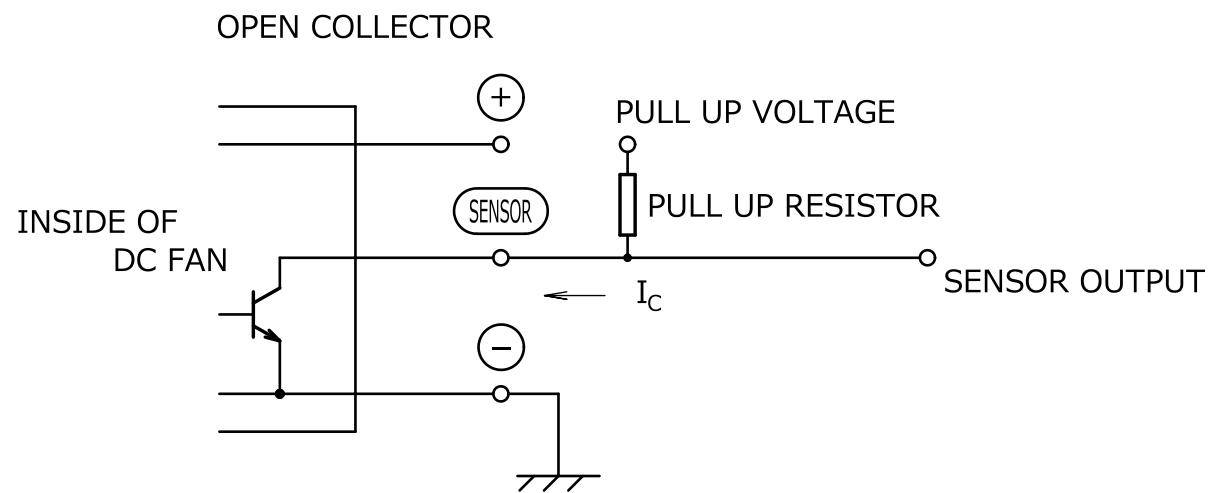


- NOTE 2-1. ALL THE VALUES IN THE TABLE ARE TYPICAL VALUES MEASURED AFTER 30 MINUTES OF OPERATION AT ROOM TEMPERATURE AND NORMAL HUMIDITY.  
表中の値はいずれも、常温、常湿、30分間動作後の標準値。
- 2-2. MEASURED BETWEEN LEAD WIRE CONDUCTORS AND FRAME.  
リード線導体部とフレームとの間。
- 2-3. AT 1 m AWAY FROM THE AIR INLET.  
ファン吸込側1 mにおける値。
- 2-4. WITHIN THE OPERATING VOLTAGE RANGE, THE MOTOR IS PROTECTED FROM BURNOUT DUE TO LOCKED ROTOR. DO NOT LOCK ROTOR OUTSIDE OF OPERATING VOLTAGE.  
使用電圧範囲にてファン拘束時焼損の恐れはない。  
使用電圧範囲外でファンを拘束しないこと。
- 2-5. THE ELECTRICAL LIVE PARTS OF THIS FAN ARE COATED WITH RESIN.  
本ファンモータは、活電部に樹脂コーティングを施している。

	ECN No.	名称 Title
単位 Unit	新規 New Design	San Ace 60W (9WPA)
mm	TOS.NISHIZAWA 23-01-24	RIBLESS/PULSE_SENSOR
尺度 Scale	図面番号 Dwg. No.	9WPA0612H40011
-	-	Rev. A
<b>SANYO DENKI</b>		承認 Approved By H.KURIBAYASHI 23-01-26
		審査 Checked By K.ISHIHARA 23-01-25
Group D12		設計 Designed By TOS.NISHIZAWA 23-01-24
User E0		Page 2/3

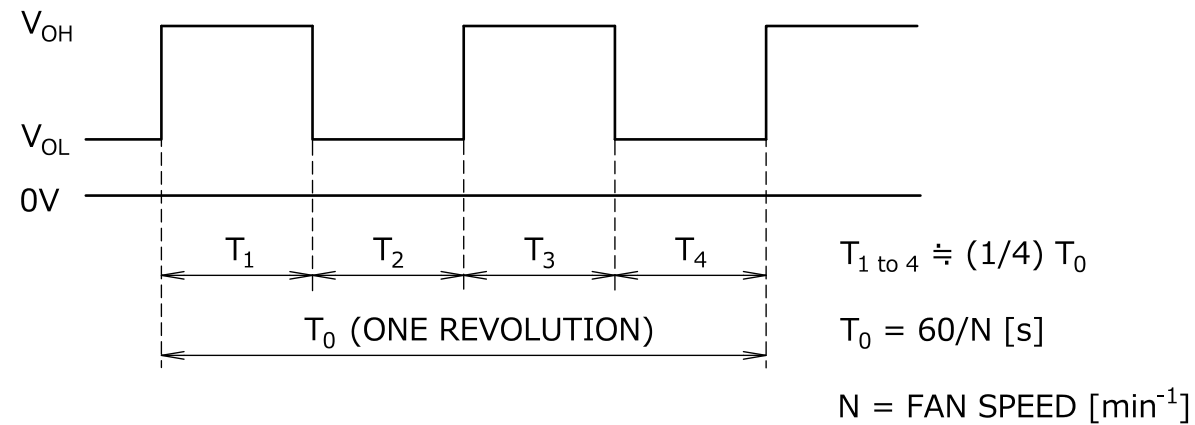
### 3. SENSOR SPECIFICATIONS

<OUTPUT CIRCUIT>



<OUTPUT WAVEFORM>

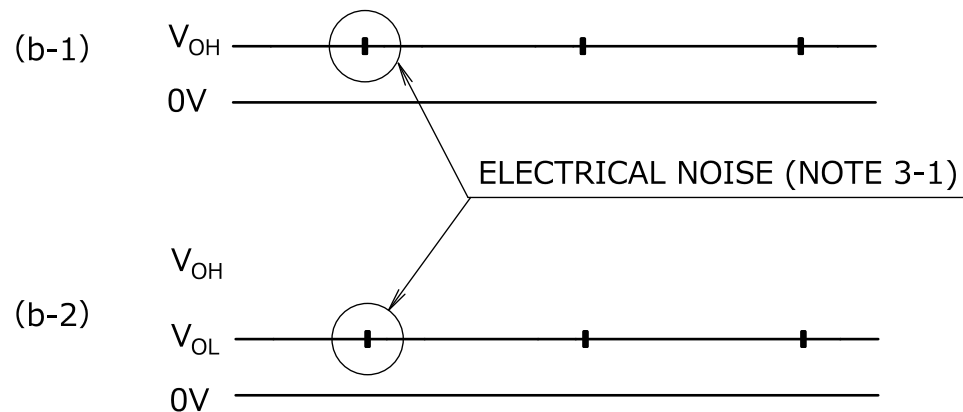
(a) IN CASE OF STEADY RUNNING



(b) IN CASE OF STEADY LOCKED ROTOR

SENSOR OUTPUT IS FIXED EITHER (b-1) OR (b-2) .

センサー出力は(b-1)あるいは(b-2)のどちらかに固定される。



<SENSOR SPECIFICATIONS>

ITEM	SYMBOL	UNIT	MAX.
PULL UP VOLTAGE	-	V	13.8
COLLECTOR - EMITTER VOLTAGE ( $V_{CE}$ )	$V_{OH}$	V	13.8
COLLECTOR CURRENT	$I_C$	mA	5
COLLECTOR SATURATION VOLTAGE ( $V_{CE(SAT)}$ )	$V_{OL}$	V	0.8

NOTE 3-1. ELECTRICAL NOISE MAY APPEAR ON  $V_{OH}$  OR  $V_{OL}$  WHEN THE MOTOR IS AUTO-RESTART.  
 モーターの自動再起動動作にともない、 $V_{OH}$ あるいは $V_{OL}$ にノイズが載ることがある。

	ECN No.	名称 Title	
単位 Unit	新規 New Design	San Ace 60W (9WPA)	
mm	TOS.NISHIZAWA 23-01-24	RIBLESS/PULSE_SENSOR	
尺度 Scale	図面番号 Dwg. No.	9WPA0612H40011	Rev. A
SANYO DENKI		承認 Approved By H.KURIBAYASHI 23-01-26	設計 Designed By TOS.NISHIZAWA 23-01-24
SANYO DENKI CO.,LTD. ISSUED		審査 Checked By K.ISHIHARA 23-01-25	設計 Designed By TOS.NISHIZAWA 23-01-24
Group	D12	User	E0
A 3 G - P 5		Page	3/3