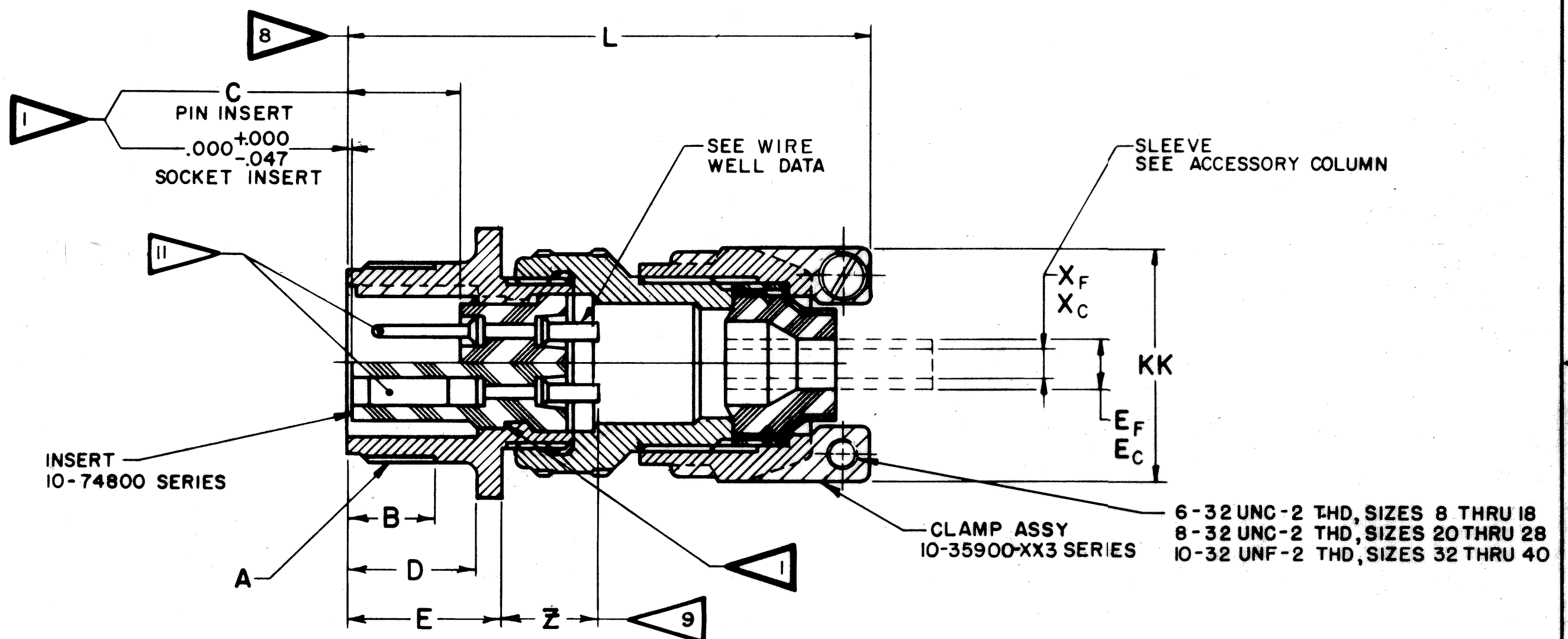
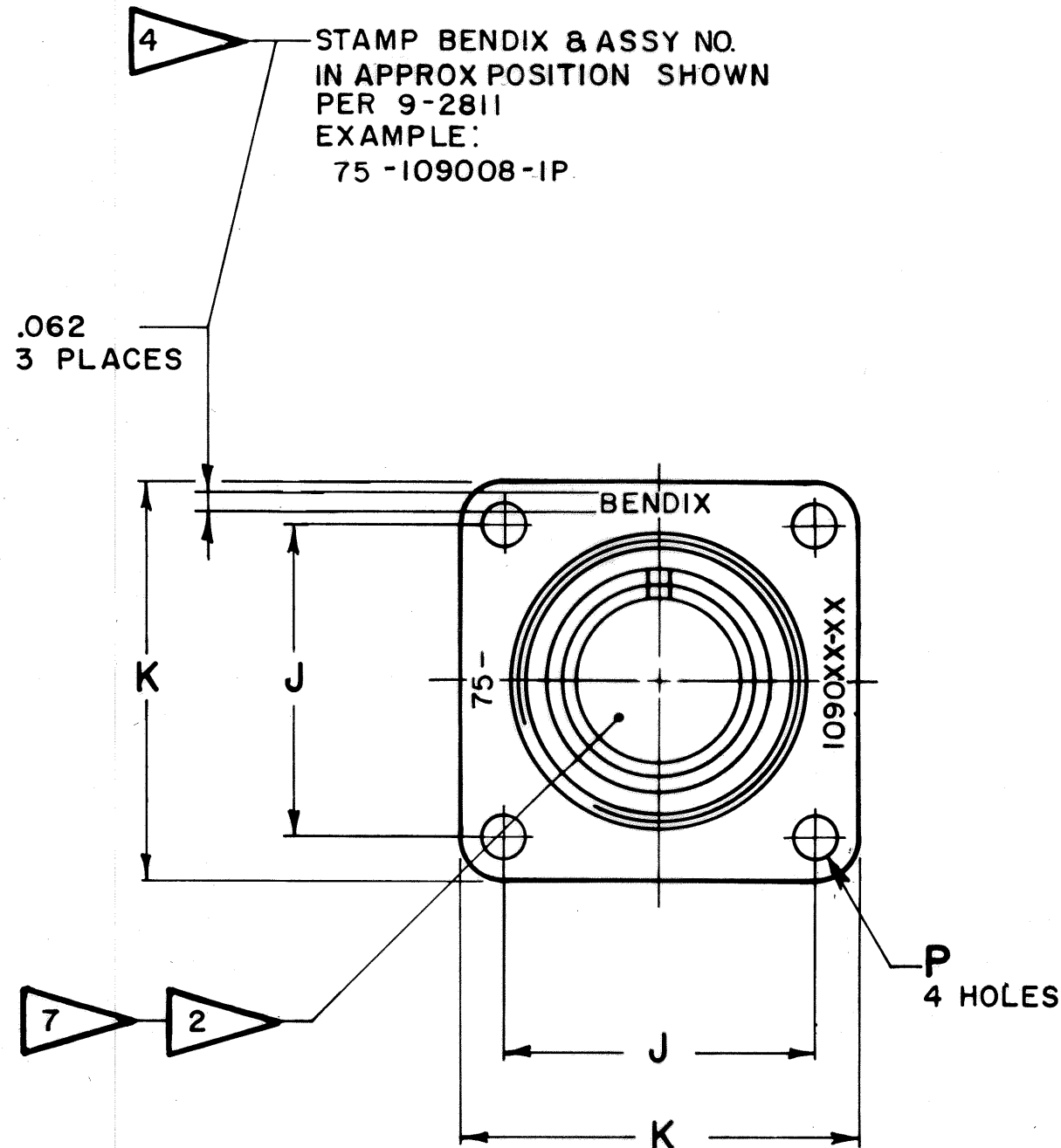


REL NO. 43524-1383		REVISIONS		
CHG NO.	SYM	DESCRIPTION	DATE	APPROVED
	A1			
47839 -15	A2	REM TITLE SOLDER WELL DATA; ADD NOTE 12; REV NOTES 9, 11; STANDARDIZED WIRE WELL DATA (O & 4).	8-9-67 BALBUENA	<i>Hayes</i> PK



WIRE WELL DATA					
CONTACT SIZE	0	4	8	12	16
WELL DIA	453±.005	.281 <sup>+0.005</sup> -.004	.179 <sup>+0.004</sup> -.002	.098 <sup>+0.004</sup> -.001	.063 <sup>+0.004</sup> -.001
WELL DEPTH	.750	.500	.500	.250	.250

USE OF THIS DOCUMENT IS UNLIMITED. DOCUMENTS REFERENCED HEREON CONTAIN LIMITED RIGHTS DATA.

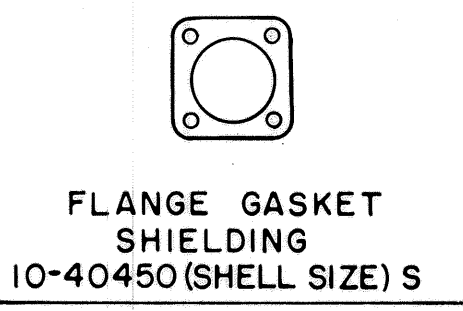
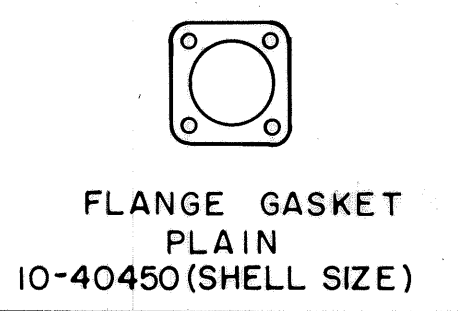
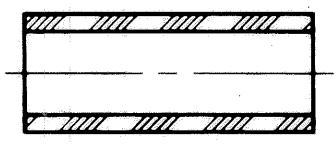
ITEM NO.	QTY REQD	DESCRIPTION	PART NUMBER	CODE IDENT	ZONE	NEXT ASSEMBLY
UNLESS OTHERWISE SPECIFIED						
LINEAR DIMENSIONS ARE IN INCHES. TOLERANCES: 3 PLACES ±.010; 2 PLACES ±.03; 1 PLACE ±.1; ANGLES ±2°. OTHER STANDARDS PER SCINTILLA SPEC 9-3800 AND MIL-STD 8.						
MATERIAL SPEC		PROCESS SPEC SEE SHEET 2	DRAWN: A. FLYZIK DATE: 8-12-65	CHECKED: <i>Kelly</i> DATE: 8-23-65	 SCINTILLA DIVISION SIDNEY, NEW YORK, U.S.A.	
STANDARDS: <i>J. Balantini</i> 7-24-65			TITLE: CONNECTOR, ELECTRICAL RECEPTACLE, TYPE SC( )FW			
DRAFTING: <i>W. Smith</i> 8-24-65			CODE IDENT NO. SIZE 77820 C			
ENGINEERING: <i>J. M. Haman</i> 8-24-65			75-109008 THRU 75-109050			
DEVELOPMENT: <i>S. J. Dodge</i> 8-28-65			SCALE NONE WT SEE PARTS LIST REF 10-109008/40 SHEET 1 OF 2			

SEE SHEET 2.  
NOTES: REF SYMBOL

75-109008/50

REL NO. 43524 1383		REVISIONS	
CHG NO.	SYM	DESCRIPTION	DATE
	A1	SEE SHEET 1 FOR ALL CHANGES	
	A2		

ASSEMBLY NUMBER	MS NO. REF	SHELL	ADAPTER ASSY	A THREAD (PLATED) CLASS 2A	B MIN FULL THD	C ±.031	D +.010 -.000	E +.020 -.010	J ±.005	K	E <sub>F</sub> FREE DIA	E <sub>C</sub> CLOSED DIA	L MAX	P DIA +.004 -.002	Z +.050 -.060	KK MAX	ACCESSORIES (NOT PART OF STANDARD ASSEMBLY)		
																	SLEEVE		
																	PART NO.	X <sub>F</sub> DIA FREE	X <sub>C</sub> DIA CLOSED
75-109008 -	3100 -8S -	10-37260-8	10-101393-83	.5000-28 UNEF	.391	.484	.562	.672	.594	.875	.219	.027	2.701	.120	.469	.807	10-35910 - 10I	.125	.000
75-109010 -	-10S -	-10	-103	.6250-24 UNEF					.719	1.000	.219	.027				.807	- 10I	.125	.000
75-109011 -	-10SL -	-11	-123	.6250-24 UNEF					.719	1.000	.312	.094				.901	- 12I	.219	.010
75-109012 -	-12S -	-12	-123	.7500-20 UNEF	.450				.812	1.094									
75-109013 -	- 12 -	-13	-133	.7500-20 UNEF	.625	.672	.750	.860	.812	1.094			3.133		.672				
75-109014 -	-14S -	-14	-143	.8750-20 UNEF	.450	.484	.562	.672	.906	1.188	.438	.230	2.701		.469	1.026	- 12I - 14I	.219 .312	.020 .114
75-109015 -	- 14 -	-15	-153	.8750-20 UNEF	.625	.672	.750	.860	.906	1.188	.438	.230	3.133		.672	1.026	- 12I - 14I	.219 .312	.020 .114
75-109016 -	-16S -	-16	-163	1.0000-20 UNEF	.450	.484	.562	.672	.969	1.281	.531	.316	2.701		.469	1.119	- 14I - 16I	.312 .438	.085 .222
75-109017 -	- 16 -	-17	-173	1.0000-20 UNEF	.625	.672	.750	.860	.969	1.281	.531	.316	3.133		.672	1.119	- 14I - 16I	.312 .438	.085 .222
75-109018 -	- 18 -	-18	-183	1.1250-18 UNEF				.891	1.063	1.375	.625	.378	3.160		.641	1.229	- 14I - 18I	.312 .438	.085 .200
75-109020 -	- 20 -	-20	-203	1.2500-18 UNEF					1.156	1.500	.750	.500	3.273			1.479	- 16I - 20I	.438 .541	.177 .270
75-109022 -	- 22 -	-22	-223	1.3750-18 UNEF					1.250	1.625	.750	.500	3.273			1.479	- 16I - 20I	.438 .541	.177 .270
75-109024 -	- 24 -	-24	-243	1.5000-18 UNEF			.812	.953	1.375	1.750	.938	.611	3.335	.147	.578	1.666	- 16I - 20I - 24I	.438 .541 .750	.186 .260 .433
75-109028 -	- 28 -	-28	-283	1.7500-18 UNS			.812	.953	1.562	2.000	.938	.611	3.507	.147	.578	1.666	- 16I - 20I - 24I	.438 .541 .750	.186 .260 .433
75-109032 -	- 32 -	-32	-323	2.0000-18 UNS			.875	1.031	1.750	2.250	1.250	.922	3.644	.173	.500	2.135	- 20I - 24I - 32I	.541 .750 .938	.273 .442 .620
75-109036 -	- 36 -	-36	-363	2.2500-16 UN					1.938	2.500	1.375	.922	3.802			2.260	- 24I - 30I - 36I	.750 .938 1.125	.358 .504 .682
75-109040 -	- 40 -	-40	-403	2.5000-16 UN					2.188	2.750	1.625	1.180	3.802			2.510	- 24I - 32I - 40I	.750 .938 1.250	.368 .514 .816
75-109041/50				NOT AVAILABLE															



7. INSERTS ARE NOT REMOVABLE.
6. TO COMPLETE ASSEMBLY NUMBER & MS NO. REF, ADD 12. PACKAGE PER PRODUCTION PROCESS SHEET. APPLICABLE INSERT ARRANGEMENT SUFFIX TO BASE NUMBERS LISTED ABOVE (FOR ALTERNATE ARRANGEMENTS, REFER TO 9-2437). TO DETERMINE DESIRED INSERT ARRANGEMENT, SEE PARTS LIST 75-109008/50.
5. FOR MATING PLUG ASSEMBLIES, SEE DRAWINGS 75-109608/50 & OTHERS.
4. SEE WORK ORDER FOR PERMISSIBLE ADDITIONAL OR ALTERNATE STAMPING.
3. FOR COMPONENT PART NUMBERS OF DESIRED ARRANGEMENT SEE APPLICABLE PARTS LIST
2. FOR CONTACT SIZE, SPACING & SERVICE RATING, SEE DRAWINGS ANDIO425 THRU ANDIO436 & L-11908/48.
1. DIMENSIONS MUST BE MAINTAINED WHEN INSERTS ARE PRESSED FIRMLY AGAINST INDICATED SHOULDER.
- NOTES: REF SYMBOL
11. DRAWING ILLUSTRATES FINAL ASSEMBLY. CONTACTS ARE SHIPPED UNASSEMBLED.
10. UNITS ILLUSTRATED MEET THE MATERIAL & FINISH REQUIREMENTS OF MIL-C-5015C. CONTACTS ARE SILVER PLATED .0002 MIN.
9. INCREASE Z DIMENSION BY .506 FOR SIZE "O" CONTACT & BY .266 FOR SIZE 4 & 8 CONTACT ONLY
8. DIMENSION INDICATES FINAL INSTALLATION. FOR STORAGE & SHIPPING, CLAMP ASSY & ADAPTER ASSY MUST BE LOOSELY COUPLED.

ITEM NO.	QTY REQD	DESCRIPTION	PART NUMBER	CODE IDENT	ZONE
PARTS LIST					
UNLESS OTHERWISE SPECIFIED		DRAWN: A. FLYZIK	DATE: 8-12-65		
LINEAR DIMENSIONS ARE IN INCHES. TOLERANCES: 3 PLACES ±.010; 2 PLACES ±.03; 1 PLACE ±.1; ANGLES ±2°. OTHER STANDARDS PER SCINTILLA SPEC 9-3800 AND MIL-STD 8.		CHECKED: <i>Kellen</i>	DATE: 8-23-65		
MATERIAL SPEC	PROCESS SPEC	STANDARDS: <i>J. Balanti</i> 8-24-65			
	TEST	DRAFTING: <i>W. Smith</i> 8-24-65			
	9-3107-2	ENGINEERING: <i>W. Morrison</i> 8-24-65			
	ASSY	DEVELOPMENT: <i>D. Dodge</i> 8-23-65			
	9-3104-1				
	9-2811				
	9-2437				

THE **Bendix** CORPORATION  
SCINTILLA DIVISION  
SIDNEY, NEW YORK, U.S.A.

TITLE: CONNECTOR,  
ELECTRICAL RECEPTACLE,  
TYPE SC(FW)

CODE IDENT NO. 77820    SIZE C

75-109008 THRU  
75-109050

SCALE NONE    WT SEE PARTS LIST    REF 10-109008/40    SHEET 2

75-109008/50