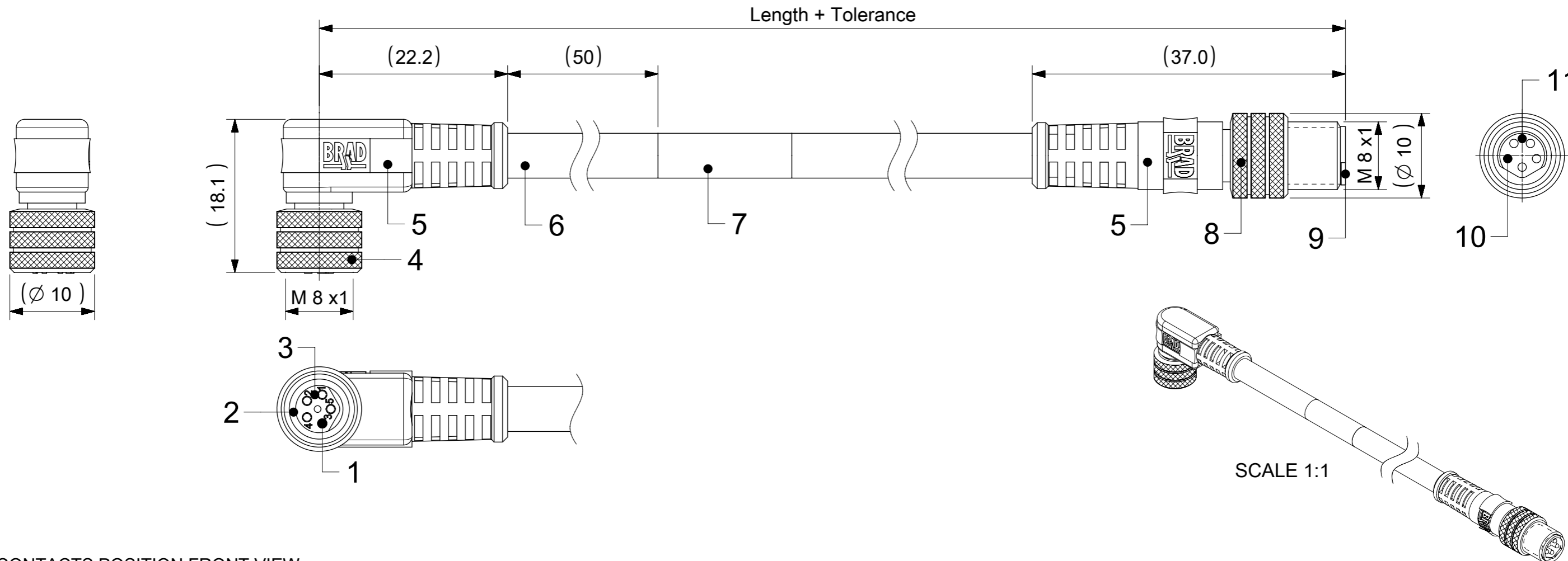


# FEMALE PLUG M8 90° ANGLED TO MALE PLUG M8 STRAIGHT



## CONTACTS POSITION FRONT VIEW:

	3 CONTACTS		4 CONTACTS		5 CONTACTS	
FEMALE						
MALE						
CONNECTIONS	PIN	WIRE	PIN	WIRE	PIN	WIRE
	1	BROWN	1	BROWN	1	BROWN
	3	BLUE	2	WHITE	2	WHITE
	4	BLACK	3	BLUE	3	BLUE
			4	BLACK	4	BLACK
					5	GREY

CODING ACCORDING TO IEC 61076-2-104

## NOTES:

RATED VOLTAGE: 3 contacts 60V AC/DC  
 4 and 5 contacts 30V AC/DC  
 CURRENT RATING: 3, 4, 5 contacts 3A  
 PROTECTION CLASS: IP 67  
 TEMPERATURE: -25°C / +80°C

## FOR OPTIONS SEE - NUMERICAL CODE - ON SHEET 2

ITEM	QTY.	DESCRIPTION	MATERIAL	FINISH
11	1	INSERT MALE BLACK	TPU	---
10	3 / 4 / 5	CONTACT M8 MALE	BRASS	SELECTIVE Au OVER Ni
9	1	SLEEVE	BRASS	NICKEL
8	1	COUPLING NUT M8 MALE	BRASS	NICKEL
7	1	LABEL YELLOW	VINYL	---
	-	PRINTING FOR CABLES lxx	---	---
6	-	CABLE	SEE SHEET 2	---
5	-	OVERMOULDING BLACK	TPU	---
4	1	COUPLING NUT M8 FEMALE	BRASS	NICKEL
3	1	INSERT FEMALE BLACK	TPU	---
2	1	O-RING RED	FKM	---
1	3 / 4 / 5	CONTACT M8 FEMALE	BRASS	SELECTIVE Au OVER Ni

SYMBOLS	DIMENSION UNITS	SCALE	CURRENT REV DESC:	molex		
▽ = 0	mm	2:1	EC NO: 608108	CSE M8 M8 XP AC BC FE RA MA STR XM		
▽ = 0	GENERAL TOLERANCES (UNLESS SPECIFIED)		DRWN: SSM 2018/11/20			
▽ = 0	ANGULAR TOL ± 1.0°		CHK'D: RSILLER 2018/11/23	PRODUCT CUSTOMER DRAWING		
▽ = 0	4 PLACES ±		APPR: RSILLER 2018/11/23			
▽ = 0	3 PLACES ±		INITIAL REVISION:	DOCUMENT NUMBER	DOC TYPE	DOC PART
▽ = 0	2 PLACES ± 0.05		DRWN: JMARSZALEK 2016/10/20	1200878243	PSD	000
▽ = 0	1 PLACE ± 0.3		APPR: RSILLER 2017/01/11	A2		
▽ = 0	0 PLACES ± 0.5		THIRD ANGLE PROJECTION	MATERIAL NUMBER	CUSTOMER	SHEET NUMBER
■ = 0	DRAFT WHERE APPLICABLE MUST REMAIN WITHIN DIMENSIONS		DRAWING	SEE PART LIST	GENERAL MARKET	1 OF 3
▽ = 0			SERIES	120087		




# PART LIST

No.	Molex PN	Engineering No.	Cable Length
1	1200280016	443031E02M010	1m
2	1200281220	443031P82M003	0.3m
3	1200281221	443031P82M006	0.6m
4	1200281283	443031E02M005	0.5m
5	1200875016	443031E02M006	0.6m
6	1200878128	443031H08M020	2m
7	1200878129	443031H08M030	3m
8	1200878130	443031H08M050	5m
9	1200878196	444031H08M010	1m
10	1200878197	444031P02M020	2m
11	1200878242	445031E02M006	0.6m
12	1200878243	445031E02M030	3m
13	1200878244	445031E02M050	5m
14	1200878254	444031P02M050	5m
15	1200878303	443031E02M003	0.3m
16	1200878304	443031E02M015	1.5m
17	1200878305	443031E02M020	2m
18	1200878306	443031E02M030	3m
19	1200878307	443031E02M035	3.5m
20	1200878308	443031E02M050	5m
21	1200878309	443031I02M006	0.6m
22	1200878310	443031I02M010	1m
23	1200878311	443031I02M015	1.5m
24	1200878312	443031I02M020	2m
25	1200878313	443031I02M030	3m
26	1200878314	443031P02M003	0.3m
27	1200878315	443031P02M006	0.6m
28	1200878316	443031P02M010	1m
29	1200878317	443031P02M020	2m
30	1200878318	443031P02M030	3m
31	1200878319	443031P02M050	5m
32	1200878363	444031E02M003	0.3m
33	1200878364	444031E02M006	0.6m
34	1200878365	444031E02M010	1m
35	1200878366	444031E02M020	2m

No.	Molex PN	Engineering No.	Cable Length
36	1200878367	444031E02M030	3m
37	1200878368	444031E02M050	5m
38	1200878369	444031E02M100	10m
39	1200878370	444031P02M003	0.3m
40	1200878371	444031P02M006	0.6m
41	1200878372	444031P02M010	1m
42	1200878373	444031P02M030	3m
43	1200878499	443031H08M010	1m
44	1200878542	443031E02M015Y	1.5m
45	1200878554	444031H08M006	0.6m
46	1200878555	444031H08M020	2m
47	1200878556	444031H08M050	5m
48	1200878557	443031H08M006	0.6m
49	1200878595	443031P02M010H	1m
50	1200878625	443031P82M050	5m
51	1200878637	443031E02M002	0.2m
52	1200878638	443031E02M025	2.5m
53	1200878639	443031E02M065	6.5m
54	1200878659	443031E02M010H	1m
55	1200878660	443031E02M005H	0.5m
56	1200878664	443031E02M020H	2m
57	1200878667	444031E02M003H	0.3m
58	1200878672	443031E02M002H	0.2m
59	1200878673	443031E02M025H	2.5m
60	1200878674	443031E02M065H	6.5m
61	1200878690	443031E02M015H	1.5m
62	1200878942	445031H08M006	0.6m
63	1200878943	445031H08M010	1m
64	1200878944	445031H08M020	2m
65	1200878945	445031H08M050	5m
66	1200878948	445031E02M010	1m
67	1200878949	445031E02M020	2m
68	1200280400	444031P02M020	2m
69			
70			

No.	Molex PN	Engineering No.	Cable Length
71			
72			
73			
74			
75			
76			
77			
78			
79			
80			
81			
82			
83			
84			
85			
86			
87			
88			
89			
90			
91			
92			
93			
94			
95			
96			
97			
98			
99			
100			
101			
102			
103			
104			
105			

No.	Molex PN	Engineering No.	Cable Length
106			
107			
108			
109			
110			
111			
112			
113			
114			
115			
116			
117			
118			
119			
120			
121			
122			
123			
124			
125			
126			
127			
128			
129			
130			
131			
132			
133			
134			
135			
136			
137			
138			
139			
140			

<b>SYMBOLS</b> DIMENSION UNITS: mm SCALE: 1:1 GENERAL TOLERANCES (UNLESS SPECIFIED) ANGULAR TOL ± 1.0° 4 PLACES ± 3 PLACES ± 2 PLACES ± 0.05 1 PLACE ± 0.3 0 PLACES ± 0.5 DRAFT WHERE APPLICABLE MUST REMAIN WITHIN DIMENSIONS THIRD ANGLE PROJECTION	THIS DRAWING CONTAINS INFORMATION THAT IS PROPRIETARY TO MOLEX ELECTRONIC TECHNOLOGIES, LLC AND SHOULD NOT BE USED WITHOUT WRITTEN PERMISSION		CURRENT REV DESC: EC NO: 608108 DRWN: SSM 2018/11/20 CHK'D: RSILLER 2018/11/23 APPR: RSILLER 2018/11/23		 CSE M8 M8 XP AC BC FE RA MA STR XM	
	INITIAL REVISION: DRWN: JMARSZALEK 2016/10/20 APPR: RSILLER 2017/01/11		PRODUCT CUSTOMER DRAWING			
	DOCUMENT NUMBER: 1200878243 DOC TYPE: PSD DOC PART: 000 REVISION: A2		MATERIAL NUMBER: SEE PART LIST CUSTOMER: GENERAL MARKET		SHEET NUMBER: 3 OF 3	
	DRAFT WHERE APPLICABLE MUST REMAIN WITHIN DIMENSIONS		THIRD ANGLE PROJECTION		DRAWING: A3-SIZE SERIES: 120087	