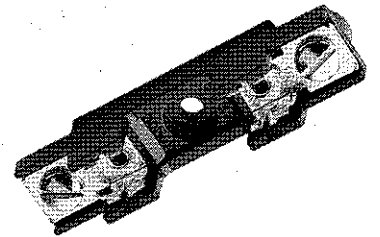


For 1/4" x 1 1/4" Fuses



Series 800

Construction: Blocks are molded flame retarded thermoplastic. Clips are spring-bronze.
Voltage Rating: 300V
Agency Approval:
 UL Recognized under Components Program; File E14853A, Guide IZL12
 CSA Certified Class 6225-01, File 47235

Anti-Rotation Pin: Single pole blocks may be ordered without the antirotation pin simply by adding an "X" to the number of poles (Example: BK/S-800-1X).

Carton Quantity: 10; shelf package: 100.

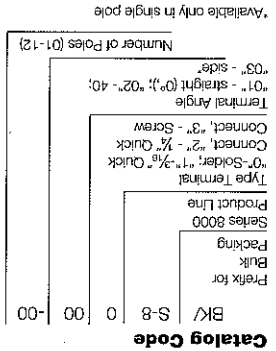
Bulk Carton: Single-pole and 2-pole fuse blocks-1,000; Multiple-pole fuse blocks-3-8 pole; 200; 9-12 pole: 50. When ordering bulk quantities, prefix "BK" to catalog number. (Example: BK/S-800-1-SNP).

Bolt-in Mounting

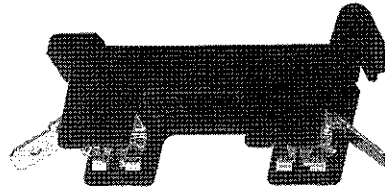
| Series | Terminal | Angle | Cat. No. | Amperes | Poles (Suffix) |
|--------|--------------------|-------|--------------|-------------------|----------------|
| 8000 | Solder | 40° | S-8002-1-SNP | CSA 21A | 1 - 12 |
| 8100 | 1/8" Quick Connect | 40° | S-8101-1-SNP | UL 20A | |
| 8200 | 1/2" Quick Connect | 40° | S-8202-1-SNP | CSA 16A | |
| 8300 | Screw | — | S-8301-1-SNP | UL 30A CSA 10A | |
| 8000 | Solder | 0° | S-8001-1-SNP | UL 25A | |
| Series | Terminal | Angle | Cat. No. | Amperes | Poles (Suffix) |

Snap-in Mounting

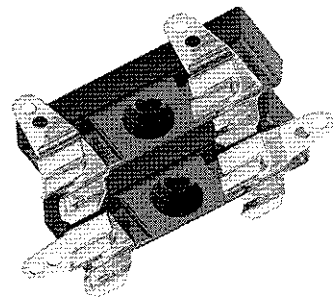
| Series | Terminal | Angle | Cat. No. | Amperes | Poles (Suffix) |
|--------|---|---|--|---------------------------------|-------------------------------|
| 8000 | Solder | 40° | S-8002-1-SNP | CSA 21A | Available only in single pole |
| 8100 | 1/8" Quick Connect | 40° | S-8101-1-SNP | UL 20A | |
| 8200 | 1/2" Quick Connect | 40° | S-8202-1-SNP | CSA 16A | |
| 8300 | Screw | — | S-8301-1-SNP | UL 30A CSA 10A | |
| 8000 | Solder | 0° | S-8001-1-SNP | UL 25A | |
| Series | Terminal <td>Angle <td>Cat. No. <td>Amperes <td>Poles (Suffix)</td> </td></td></td> | Angle <td>Cat. No. <td>Amperes <td>Poles (Suffix)</td> </td></td> | Cat. No. <td>Amperes <td>Poles (Suffix)</td> </td> | Amperes <td>Poles (Suffix)</td> | Poles (Suffix) |



CE logo denotes compliance with European Union Low Voltage Directive (50-1000V AC, 75-1500V DC). Refer to BIF document #8002 or contact Bussmann Application Engineering at 314-627-1270 for more information.



BIF document: 2101



4405

4406

1/2" x 1 1/4" Single Pole

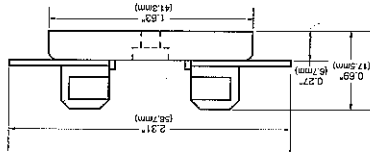
(6.4mm x 31.8mm)

Bakelite base; spring-bronze, Albaloy-plate clips; 30 amperes, 250 volts;

base width 1/2" (12.7mm).

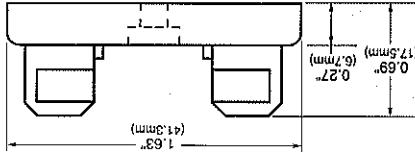
No. 4405—0° Solder Terminals.

Integral terminal and clip.



No. 4406—Side Solder Terminal

Spare Fuseblock

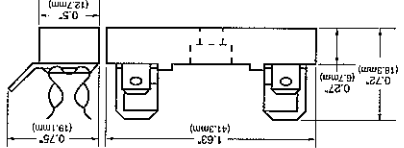


No. 2499—Side Quick-Connect

Terminals. 1/2" (6.4mm); 15 amperes,

250 volts. UL Recognized.

Guide IZL12, File E14853.



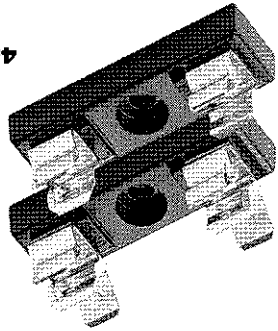
Note—Mounting screw hole diameter is 0.147"

(3.7mm). Counterbore diameter, 0.314" (8.0mm).

Max. Mounting Screw No. 6.

2499

4574



BIF document: 2057

