

ZTR 6-2 E / 24V UC**Weidmüller Interface GmbH & Co. KG**

Klingenbergstraße 26

D-32758 Detmold

Germany

www.weidmueller.com

Product image

Earth-wire disconnect terminal helps detect earth faults and enables the earthing of the auxiliary circuit to be disconnected. The different kind of operation status is indicated by a red and green LED.

General ordering data

| | |
|------------|--|
| Version | Test-disconnect terminal, Tension-clamp connection, 6 mm ² , 24 V, 20 A, Pivoting, dark beige |
| Order No. | 8817920000 |
| Type | ZTR 6-2 E / 24V UC |
| GTIN (EAN) | 4032248517831 |
| Qty. | 10 pc(s). |

Creation date October 11, 2023 8:40:52 AM CEST

Catalogue status 30.09.2023 / We reserve the right to make technical changes.

ZTR 6-2 E / 24V UC

Weidmüller Interface GmbH & Co. KG

Klingenbergstraße 26

D-32758 Detmold

Germany

www.weidmueller.com

Technical data

Dimensions and weights

| | | | |
|--------------------------|------------|----------------|------------|
| Depth | 50 mm | Depth (inches) | 1.969 inch |
| Depth including DIN rail | 51 mm | Height | 70 mm |
| Height (inches) | 2.756 inch | Width | 16.2 mm |
| Width (inches) | 0.638 inch | Net weight | 2 g |

Temperatures

| | | | |
|----------------------------------|----------------|----------------------------------|-----|
| Storage temperature | -25 °C...55 °C | Continuous operating temp., min. | -40 |
| Continuous operating temp., max. | 85 | | |

Material data

| | | | |
|---------------------------|-------|--------|------------|
| Material | Wemid | Colour | dark beige |
| UL 94 flammability rating | V-0 | | |

System specifications

| | | | |
|-------------------------------------|--|-------------------------------|-----|
| Version | Tension-clamp connection, Cross-connector, with LED, in closed state | End cover plate required | Yes |
| Number of potentials | 1 | Number of levels | 1 |
| Number of clamping points per level | 4 | Number of potentials per tier | 1 |
| Levels cross-connected internally | Yes | PE connection | No |
| Rail | TS 35 | N-function | No |
| PE function | No | PEN function | No |

Additional technical data

| | |
|---------------------|-----------------|
| Installation advice | Direct mounting |
|---------------------|-----------------|

Conductors for clamping (rated connection)

| | | | |
|---|--------------------------|---|--------------------|
| Blade size | 0.6 x 3.5 mm | Clamping range, max. | 10 mm ² |
| Clamping range, min. | 0.05 mm ² | Connection cross-section, stranded, max. | 6 mm ² |
| Connection cross-section, stranded, min. | 0.5 mm ² | Gauge to IEC 60947-1 | A5 |
| Number of connections | 2 | Stripping length | 12 mm |
| Type of connection | Tension-clamp connection | Wire connection cross section, finely stranded, max. | 6 mm ² |
| Wire connection cross section, finely stranded, min. | 0.5 mm ² | Wire connection cross-section, finely stranded with wire-end ferrules DIN 46228/1, max. | 6 mm ² |
| Wire connection cross-section, finely stranded with wire-end ferrules DIN 46228/1, min. | 0.5 mm ² | Wire connection cross-section, finely stranded with wire-end ferrules DIN 46228/4, max. | 6 mm ² |
| Wire connection cross-section, finely stranded with wire-end ferrules DIN 46228/4, min. | 0.5 mm ² | Wire connection cross-section, solid core, max. | 10 mm ² |
| Wire connection cross-section, solid core, min. | 0.5 mm ² | | |

Dimensions

| | |
|--------------|-------|
| TS 35 offset | 41 mm |
|--------------|-------|

ZTR 6-2 E / 24V UC

Weidmüller Interface GmbH & Co. KG

Klingenbergstraße 26

D-32758 Detmold

Germany

www.weidmueller.com

Technical data

Disconnect terminals

| | | | |
|------------------|---------|----------|----------|
| Cross-disconnect | without | Slitting | Pivoting |
|------------------|---------|----------|----------|

General

| | | | |
|---------------------|-----------------|------|-------|
| Installation advice | Direct mounting | Rail | TS 35 |
|---------------------|-----------------|------|-------|

Rating data

| | | | |
|--|-------------------|---------------------------------|------|
| Rated cross-section | 6 mm ² | Rated voltage | 24 V |
| Rated DC voltage | 24 V | Rated current | 20 A |
| Volume resistance according to IEC 60947-7-x | 0.78 mΩ | Rated impulse withstand voltage | 8 kV |
| Power loss in accordance with IEC 60947-7-x | 1.31 W | Pollution severity | 3 |

UL rating data

| | | | |
|--|--------|--|-------|
| Certificate No. (cURus) | E60693 | Conductor size Factory wiring max. (cURus) | 8 AWG |
| Conductor size Factory wiring min. (cURus) | 22 AWG | Conductor size Field wiring max. (cURus) | 8 AWG |
| Conductor size Field wiring min. (cURus) | 22 AWG | Current size B (cURus) | 25 A |
| Current size C (cURus) | 25 A | Current size D (cURus) | 10 A |
| Voltage size B (cURus) | 300 V | Voltage size C (cURus) | 300 V |
| Voltage size D (cURus) | 300 V | | |

Classifications

| | | | |
|-------------|-------------|-------------|-------------|
| ETIM 6.0 | EC000902 | ETIM 7.0 | EC000902 |
| ETIM 8.0 | EC000902 | ETIM 9.0 | EC000902 |
| ECLASS 9.0 | 27-14-11-26 | ECLASS 9.1 | 27-14-11-26 |
| ECLASS 10.0 | 27-14-11-26 | ECLASS 11.0 | 27-14-11-26 |
| ECLASS 12.0 | 27-14-11-26 | ECLASS 13.0 | 27250109 |

Approvals

Approvals



| | |
|-------------------------|------------|
| ROHS | Conform |
| UL File Number Search | UL Website |
| Certificate No. (cURus) | E60693 |

Downloads

| | |
|---|---|
| Approval/Certificate/Document of Conformity | Declaration of Conformity UKCA declaration of conformity |
| Engineering Data | CAD data – STEP |
| User Documentation | Storage Conditions Terminal Blocks User Manual Z-Series |
| Catalogues | Catalogues in PDF-format |
| Brochures | |

Creation date October 11, 2023 8:40:52 AM CEST

Catalogue status 30.09.2023 / We reserve the right to make technical changes.

3

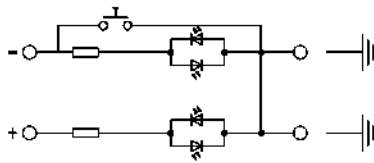
Data sheet

ZTR 6-2 E / 24V UC

Weidmüller Interface GmbH & Co. KG
Klingenbergstraße 26
D-32758 Detmold
Germany

www.weidmueller.com

Drawings



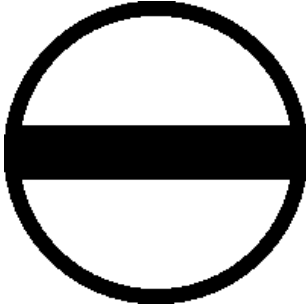
ZTR 6-2 E / 24V UC**Weidmüller Interface GmbH & Co. KG**

Klingenbergstraße 26

D-32758 Detmold

Germany

www.weidmueller.com

Accessories**Slotted screwdriver**

Slotted screwdriver with rounded blade SD DIN 5265, ISO 2380/2, output to DIN 5264, ISO 2380/1. ChromTop tip, SoftFinish grip

General ordering data

| | | |
|------------|----------------------------|---|
| Type | SDS 1.0X5.5X150 | Version |
| Order No. | 2749380000 | Screwdriver, Blade width (B): 5.5 mm, Blade length: 150 mm, Blade thickness (A): 1 mm |
| GTIN (EAN) | 4050118895605 | |
| Qty. | 1 pc(s). | |

Marker holder

The marker holder offer the possibility of additional mounting of standard markers with a pitch of 5 or 5.1 mm. The angled holders can be optionally snapped together and could be mounted in all standard marking channels of the Klippon® Connect modular terminal blocks. Fitting marker types could be found under the respective accessories of the designation marking holder.

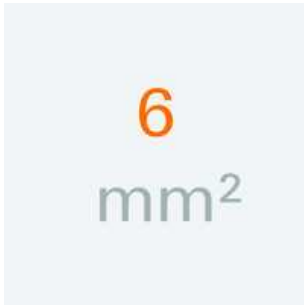
General ordering data

| | | |
|------------|----------------------------|----------------------------|
| Type | BZT 1 WS 10/5 | Version |
| Order No. | 1805490000 | Accessories, Marker holder |
| GTIN (EAN) | 4032248270231 | |
| Qty. | 100 pc(s). | |
| Type | BZT 1 ZA WS 10/5 | Version |
| Order No. | 1805520000 | Accessories, Marker holder |
| GTIN (EAN) | 4032248270248 | |
| Qty. | 100 pc(s). | |

ZTR 6-2 E / 24V UC

Weidmüller Interface GmbH & Co. KG
 Klingenbergstraße 26
 D-32758 Detmold
 Germany

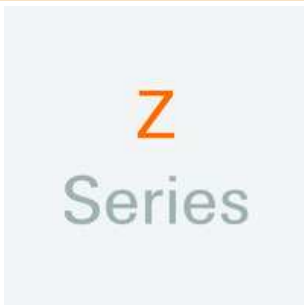
www.weidmueller.com

Accessories
6 mm²


End plates are fitted to the open side of the last modular terminal before the end bracket. The use of an end plate ensures the function of the modular terminal and the specified rated voltage. It guarantees protection against contact with live parts and makes the final terminal finger-proof.

General ordering data

| Type | ZAP ZDU6-2 | Version |
|------------|----------------------------|---------------------|
| Order No. | 1771440000 | Z-series, End plate |
| GTIN (EAN) | 4032248169719 | |
| Qty. | 50 pc(s). | |

Z-Series


Test adapters and test plugs are used for the electrical connection between terminal blocks and the test equipment. In this way, an electrical contact can be established in the wired state and measurements can be done easily.

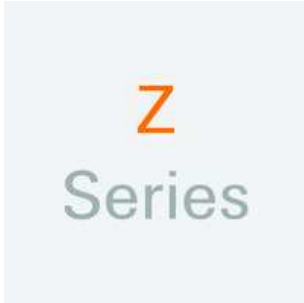
General ordering data

| Type | ZTA 7/ZA | Version |
|------------|----------------------------|--------------------------------|
| Order No. | 1780670000 | Accessories, Test adapter, 9 A |
| GTIN (EAN) | 4032248180202 | |
| Qty. | 25 pc(s). | |

ZTR 6-2 E / 24V UC

Weidmüller Interface GmbH & Co. KG
Klingenbergstraße 26
D-32758 Detmold
Germany

www.weidmueller.com

Accessories**Z-Series**

Weidmüller's range of products includes end brackets that guarantee a permanent, reliable mounting on the terminal rail and prevent sliding. Versions with and without screws are available. The end brackets include marking options, also for group markers, and also a test plug holder.

General ordering data

| | | |
|------------|----------------------------|-----------------------|
| Type | ZEW 35 | Version |
| Order No. | 9540000000 | Z-series, End bracket |
| GTIN (EAN) | 4008190956264 | |
| Qty. | 20 pc(s). | |