

**FP PRO TOP3 24/20 3M****Weidmüller Interfaces GmbH & Co. KG**

Postfach 3030

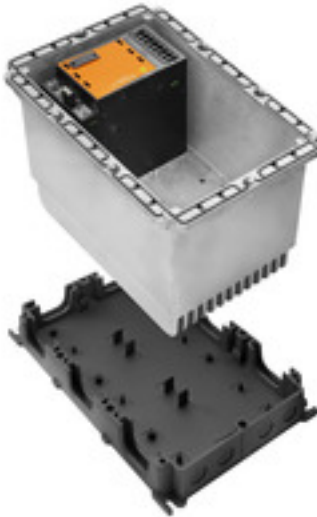
32760 Detmold

Tel. +49 5231 14-0

Fax. +49 5231 14-2083

info@weidmueller.com

www.weidmueller.com



PROtop power supplies offer a wide range of functions with many advantages. These include high energy efficiency, outstanding power reserves, high reliability and optional communication capability. PROtop also supports direct parallel connection with load balancing. With the possibility of integrating our PROtop power supplies into the FieldPower<sup>®</sup> system, the entire range of functions becomes available in the field – with all the advantages of the FieldPower<sup>®</sup> modular system.

**General ordering data**

Order No.	<a href="#">8000052016</a>
Type	FP PRO TOP3 24/20 3M
GTIN (EAN)	4050118770834
Qty.	1 pc(s).

## FP PRO TOP3 24/20 3M

Weidmüller Interfaces GmbH & Co. KG

Postfach 3030

32760 Detmold

Tel. +49 5231 14-0

Fax. +49 5231 14-2083

info@weidmueller.com

www.weidmueller.com

## Technical data

### Dimensions and weights

Depth	220 mm	Depth (inches)	8.661 inch
Height	196 mm	Height (inches)	7.717 inch
Width	284 mm	Width (inches)	11.181 inch
Net weight	4,756 g		

### Temperatures

Storage temperature	-40 °C...85 °C	Operating temperature	-25 °C...50 °C
Operating temperature range	-25 °C ... +50 °C (regarding derating) Start up ≥ -40 °C		

### Environmental Product Compliance

REACH SVHC	Lead 7439-92-1, Potassium perfluorobutane sulfonate 29420-49-3	SCIP	7645f3b1-6db9-495d-9e21- ab1d894aff05
------------	--	------	--

### Input

Input fuse (internal)	No	Inrush current	Max. 10 A
Rated input voltage	3x 400...3x 500 V AC (wide-range input)		

### Output

Nominal output current for $U_{nom}$	20 A @ 60 °C	Rated output voltage	24 V DC ± 1 %
--------------------------------------	--------------	----------------------	---------------

### General data

Adjacent	No	DIN Rail compatibility	No
Installation advice	Screws included	Operating temperature	-25 °C...50 °C

### Classifications

ETIM 6.0	EC002540	ETIM 7.0	EC002540
ETIM 8.0	EC002540	ECLASS 9.1	27-04-07-01
ECLASS 10.0	27-04-07-01	ECLASS 11.0	27-04-07-01
ECLASS 12.0	27-04-07-01		

### Approvals

ROHS	Conform
------	---------

### Downloads

Approval/Certificate/Document of Conformity	<a href="#">Manufacturer's Declaration FieldPower® PROtop</a>
Product Change Notification	<a href="#">Produktänderungsmittteilung FieldPower® Box Schrauben</a> <a href="#">Product Change Notification FieldPower® box screws</a>
User Documentation	<a href="#">Manual FieldPower® enclosure size 3</a> <a href="#">Manual FieldPower® PROtop</a>
Catalogues	<a href="#">Catalogues in PDF-format</a>

**FP PRO TOP3 24/20 3M**

**Weidmüller Interfaces GmbH & Co. KG**

Postfach 3030

32760 Detmold

Tel. +49 5231 14-0

Fax. +49 5231 14-2083

info@weidmueller.com

**Drawings**

