

ACT20P-VM-AO-S

Weidmüller Interface GmbH & Co. KG
 Klingenbergstraße 26
 D-32758 Detmold
 Germany

www.weidmueller.com



ACT20P: The flexible solution

- Precise and highly functional signal converters
- Release levers simplify handling

General ordering data

Version	Analogue isolating amplifier, Input : AC/DC voltage, 0...600 V DC, 0...440 V AC, Output : 0-10 V, 0(4)-20 mA, Signal converter/isolator
Order No.	7760054306
Type	ACT20P-VM-AO-S
GTIN (EAN)	6944169749087
Qty.	1 items

ACT20P-VM-AO-S

Weidmüller Interface GmbH & Co. KG

Klingenbergstraße 26

D-32758 Detmold

Germany

www.weidmueller.com

Technical data

Approvals

Approvals



ROHS Conform

UL File Number Search [UL Website](#)

Certificate No. (cURus) E469563

Dimensions and weights

Depth	114.3 mm	Depth (inches)	4.5 inch
Height	119.2 mm	Height (inches)	4.6929 inch
Width	22.5 mm	Width (inches)	0.8858 inch
Net weight	110 g		

Temperatures

Storage temperature	-40 °C...85 °C	Operating temperature	-20 °C...60 °C
Humidity at operating temperature	0...95 % (no condensation)	Humidity	5...95 %, no condensation

Probability of failure

SIL in compliance with IEC 61508	None	MTTF	140 a
----------------------------------	------	------	-------

Environmental Product Compliance

RoHS Compliance Status	Compliant with exemption
RoHS Exemption (if applicable/known)	7a, 7cl
REACH SVHC	Lead 7439-92-1
SCIP	2f6dd957-421a-46db-a0c2-cf1609156924

Input

Number inputs	1	Input resistance	1 MΩ±5%
Input voltage	0...30 V DC, 0...60 V DC, 0...150 V DC, 0...300 V DC, 0...440 V DC, 0...660 V DC, 0...60 V AC, 0...144 V AC, 0...300 V AC, 0...440 V AC, configurable	Input signal	UDC, UAC effective value (sinusoidal only) 40-60 Hz

Output

Number of outputs	1	load impedance voltage	≥ 10 kΩ
Load impedance current	≤ 500 Ω	Type	active, connected control must be passive
Output voltage, note	0...10 V	Output current	0...20 mA, 4...20 mA

General data

Accuracy	0.5 % FSR	Protection degree	IP20
Supply voltage	24...240 VUC (±10%)	Step response time	<300 ms
Mounting rail	TS 35	Power consumption	≤ 100 mA @ 24 VDC, ≤ 120 mA @ 24V AC
Temperature coefficient	≤ 200 ppm/K	Nominal power consumption	2 VA

ACT20P-VM-AO-S

Weidmüller Interface GmbH & Co. KG

Klingenbergstraße 26
D-32758 Detmold
Germany

www.weidmueller.com

Technical data

Configuration	With FDT/DTM software, Requires configuration adapter 8978580000 CBX200 USB	Operating altitude	≤ 2000 m
---------------	--	--------------------	----------

Insulation coordination

Impulse withstand voltage	4 kV (1.2/50 µs) input - output, 4 kV (1.2/50 µs) input / supply, 2.5 kV (1.2/50 µs) output / supply	EMC standards	EN 61326-1, EN 61000-6-2, EN 61000-6-4
Surge voltage category	III	Pollution severity	2
Galvanic isolation	3-way isolator, between input / output / supply	Insulation voltage	1.5 kV AC output / supply, 2 kV AC input / output, 2 kV AC input / supply
Rated voltage	600 V input / output, 600 V input / supply, 300 V output / supply		

Connection data

Type of connection	Screw connection	Tightening torque, min.	0.4 Nm
Tightening torque, max.	0.6 Nm	Clamping range, rated connection	1.5 mm ²
Clamping range, min.	0.5 mm ²	Clamping range, max.	2.5 mm ²
Wire connection cross section AWG, min.	AWG 26	Wire connection cross section AWG, max.	AWG 12

Part description

Product description	The analogue voltage converter ACT20P-VM-AO-S measures DC or AC voltages. The analogue input signal is linearly converted into an analogue output signal (current or voltage) and galvanically isolated. Features <ul style="list-style-type: none"> • Configuration and monitoring are performed via FDT/DTM-Software „WI-Manager“. • Signal and alarm triggering upon exceeding limit values or reverse polarity DC input voltage • Front LED indicates operation status • 3-way galvanic isolation between input, output and power supply.
---------------------	--

Classifications

ETIM 6.0	EC002653	ETIM 7.0	EC002653
ETIM 8.0	EC002653	ETIM 9.0	EC002653
ETIM 10.0	EC002653	ECLASS 9.0	27-21-01-20
ECLASS 9.1	27-21-01-20	ECLASS 10.0	27-21-01-20
ECLASS 11.0	27-21-01-20	ECLASS 12.0	27-21-01-20
ECLASS 13.0	27-21-01-20	ECLASS 14.0	27-21-01-20
ECLASS 15.0	27-21-01-20		

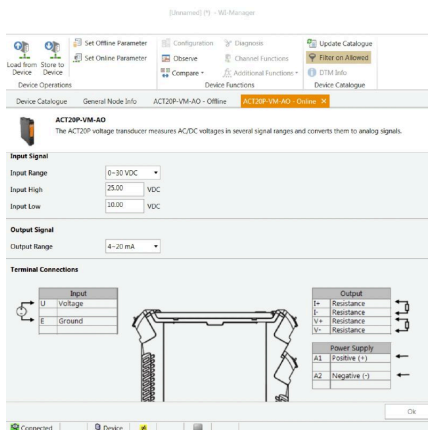
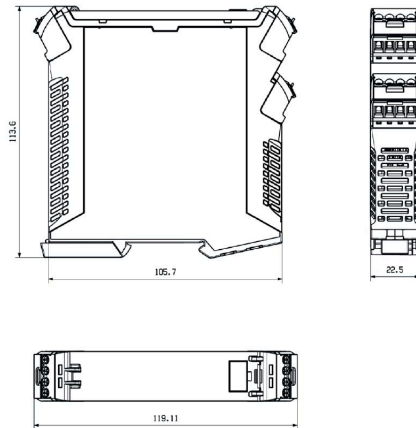
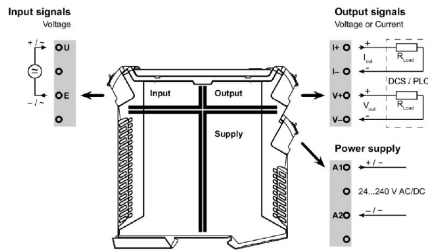
ACT20P-VM-AO-S

Weidmüller Interface GmbH & Co. KG
 Klingenbergstraße 26
 D-32758 Detmold
 Germany

Drawings

www.weidmueller.com

Dimensioned drawing



screenshot of configuration with FDT2 / DTM software