

Accessories
MOFU 35/LO/1**Weidmüller Interface GmbH & Co. KG**
Klingenbergstraße 26
D-32758 Detmold
Germany
Fon: +49 5231 14-0
Fax: +49 5231 14-292083
www.weidmueller.com**Product image**

Similar to illustration

Shielding and earthing

Our protective earth conductor and shielding terminals featuring different connection technologies allow you to effectively protect both people and equipment from interference, such as electrical or magnetic fields. A comprehensive range of accessories rounds off our range.

General ordering data

Type	MOFU 35/LO/1
Order No.	0646260000
Version	Accessories, Mounting foot, Polyamide 66
GTIN (EAN)	4008190178574
Qty.	20 pc(s).

Creation date August 17, 2020 6:26:10 PM CEST

Catalogue status 14.08.2020 / We reserve the right to make technical changes.

Data sheet

Accessories MOFU 35/LO/1

Weidmüller Interface GmbH & Co. KG
 Klingenbergstraße 26
 D-32758 Detmold
 Germany
 Fon: +49 5231 14-0
 Fax: +49 5231 14-292083
 www.weidmueller.com

Technical data

Dimensions and weights

Width	18 mm	Width (inches)	0.709 inch
Height	58 mm	Height (inches)	2.283 inch
Depth	18.35 mm	Depth (inches)	0.722 inch
Net weight	5.704 g		

Temperatures

Continuous operating temp., min.	-50 °C	Continuous operating temp., max.	100 °C
----------------------------------	--------	----------------------------------	--------

Material data

Material	Polyamide 66	Colour	orange
UL 94 flammability rating	V-2		

System specifications

Version	Mounting foot	End cover plate required	No
Rail	TS 35		

Additional technical data

Explosion-tested version	No	Type of fixing	Snap-on
Type of mounting	Snap-on		

Conductors for clamping (rated connection)

Type of connection	Tension-clamp connection
--------------------	--------------------------

Dimensions

Pitch in mm (P)	18 mm
-----------------	-------

Classifications

ETIM 6.0	EC002848	ETIM 7.0	EC002848
eClass 9.0	27-14-11-92	eClass 9.1	27-14-11-92
eClass 10.0	27-14-11-92	UNSPSC	30-21-18-11

Approvals

ROHS	Conform
------	---------

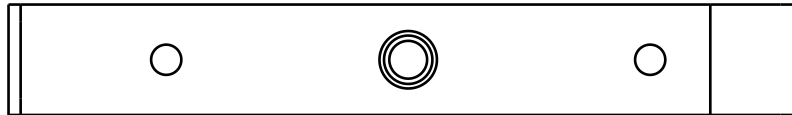
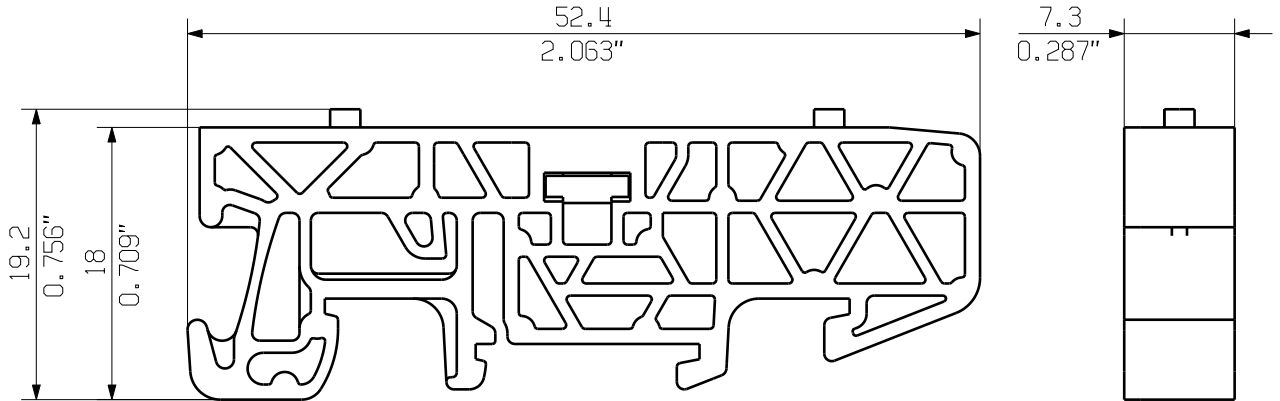
Downloads

Brochure/Catalogue	CAT 1 TERM 16/17 EN
Engineering Data	EPLAN_WSCAD
Engineering Data	STEP
User Documentation	StorageConditionsTerminalBlocks

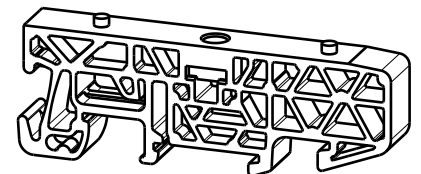
MASSE OHNE TOLERANZ SIND KEINE PRUEFFMASSE
DIMS. WITHOUT TOLERANCE ARE NOT CONTROL DIMS.

DIE DEUTSCHE VERSION IST VERBINDLICH
THE GERMAN VERSION IS BINDING

ALLGEMEINGUELTIGE KUNDENZEICHNUNG, AKTUELLER STAND NUR AUF ANFRAGE
GENERAL CUSTOMER DRAWING, TOPICAL VERSION ONLY IF REQUIRED



M 1/1



WEITERGABE SOWIE VERVIELFAELTIGUNG DIESES DOKUMENTS, VERWERTUNG UND MITTEILUNG SEINES INHALTS SIND VERBOTEN, SOWEIT NICHT AUSDRUECKLICH GESTATTET. ZUWIDERHANDLUNGEN VERPFLICHTEN ZU SCHADENERSATZ. ALLE RECHTE FUER DEN FALL DER PATENT-, GEBRAUCHSMUSTER- ODER GESCHMACKSMUSTEREINTRAGUNG VORBEHALTEN. THE REPRODUCTION, DISTRIBUTION AND UTILIZATION OF THIS DOCUMENT AS WELL AS THE COMMUNICATION OF ITS CONTENTS TO OTHERS WITHOUT EXPLICIT AUTHORIZATION IS PROHIBITED. OFFENDERS WILL BE HELD LIABLE FOR THE PAYMENT OF DAMAGES. WEIDMUELLER EXCLUSIVELY RESERVES THE RIGHT TO FILE FOR PATENTS, UTILITY MODELS OR DESIGNS. © WEIDMUELLER INTERFACE GmbH & Co.KG

GENERAL TOLERANCE: DIN ISO 2768-mK		84373/5 29.09.15 01 GUETZLAFF_T MODIFICATION		CAT.NO.:1937600000	
		MAX. NRN./NOS.			
		DATE		DRAWING NO. 4 42839 02	
SCALE: 2/1		DRAWN 24.02.2006		ISSUE NO. 02	
SUPERSEDES: .		RESPONSIBLE		SHEET 01 OF 01 SHEETS	
		CHECKED 02.10.2015			
		APPROVED		BV/SV 7.62HP MOFU GR MONTAGEFUSS SNAP ON FOOT	
		LANG_T		PRODUCT FILE: SV/BV 7.62 HP	
		LANG_T		7340	