

QL 2 RSF1+2

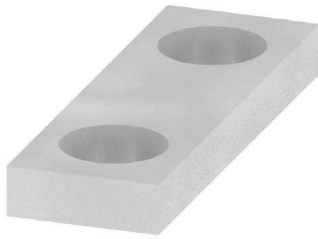
Weidmüller Interface GmbH & Co. KG

Klingenbergstraße 26

D-32758 Detmold

Germany

www.weidmueller.com



Screwable cross-connections are easy to mount and de-mount. Thanks to the big contact surface, even high currents can be transmitted with maximum contact reliability.

General ordering data

Version	Cross-connector (terminal), when screwed in, grey, 57 A, Number of poles: 2, Pitch in mm (P): 11.00, Insulated: No, Width: 18 mm
Order No.	0267400000
Type	QL 2 RSF1+2
GTIN (EAN)	4008190139988
Qty.	50 ST

QL 2 RSF1+2

Weidmüller Interface GmbH & Co. KG

Klingenbergstraße 26

D-32758 Detmold

Germany

www.weidmueller.com

Technical data

Approvals

ROHS Conform

Dimensions and weights

Depth	2 mm	Depth (inches)	0.0787 inch
Height	6 mm	Height (inches)	0.2362 inch
Width	18 mm	Width (inches)	0.7087 inch
Net weight	1.38 g		

Temperatures

Storage temperature -25 °C...55 °C Ambient temperature -5 °C...40 °C

Environmental Product Compliance

RoHS Compliance Status Compliant without exemption
REACH SVHC No SVHC above 0.1 wt%

Material data

Material Cu Zn Colour grey

System specifications

Version Cross-connector

Additional technical data

Type of fixing when screwed in Installation advice Direct mounting
Explosion-tested version No Type of mounting when screwed in

Cross-connector

Number of cross-connected terminals 2 Type Cross-connector
Rated current, 2-pole 32 A Rated current, multi-pole 57 A

Dimensions

Pitch in mm (P) 11.00 mm

General

Number of poles 2 Installation advice Direct mounting

Rating data

Rated current 57 A

Classifications

ETIM 6.0	EC000489	ETIM 7.0	EC000489
ETIM 8.0	EC000489	ETIM 9.0	EC000489
ETIM 10.0	EC000489	ECLASS 9.0	27-14-11-40
ECLASS 9.1	27-14-11-40	ECLASS 10.0	27-14-11-40

Technical data

ECLASS 11.0	27-14-11-40	ECLASS 12.0	27-14-11-40
ECLASS 13.0	27-25-03-03	ECLASS 14.0	27-25-03-03
ECLASS 15.0	27-25-03-03		