

HDC MHE 4 MP

Weidmüller Interface GmbH & Co. KG
Klingenbergstraße 26
D-32758 Detmold
Germany

www.weidmueller.com



Flexible

The four module sizes make for individual plug solutions that save a huge amount of space. The smaller pitch translates into an optimised design too.

General ordering data

Version	Signal module, 250 V, 16 A, Number of poles: 4, PUSH IN with actuator, Male, Required plug-in slots: 0.5
Order No.	2635980000
Type	HDC MHE 4 MP
GTIN (EAN)	4050118692785
Qty.	1 items

HDC MHE 4 MP

Weidmüller Interface GmbH & Co. KG
 Klingenbergstraße 26
 D-32758 Detmold
 Germany

www.weidmueller.com

Technical data

Approvals

Approvals



ROHS	Conform
UL File Number Search	UL Website
Certificate No. (cURus)	E92202

Dimensions and weights

Depth	34 mm	Depth (inches)	1.3386 inch
Height	59.6 mm	Height (inches)	2.3465 inch
Width	7.15 mm	Width (inches)	0.2815 inch
Net weight	14.96 g		

Temperatures

Limit temperature	-40 °C ... 125 °C
-------------------	-------------------

Environmental Product Compliance

RoHS Compliance Status	Compliant with exemption
RoHS Exemption (if applicable/known)	6c
REACH SVHC	Lead 7439-92-1, Potassium perfluorobutane sulfonate 29420-49-3
SCIP	9ed66ce7-2fe8-4987-bb46-06cab3f02292

General data

Number of poles	4	Number of potentials	4
UL 94 flammability rating	V-0	Insulation resistance	1012 Ω
Plugging cycles	≥ 500	Type	Male
Surge voltage category	III	Pollution severity	3
Basic material	Polycarbonate, glass fibre reinforced	Series	ModuPlug
Rated voltage (DIN EN 61984)	250 V	Rated voltage according to UL/CSA	600 V
Rated impulse voltage (DIN EN 61984)	4 kV	Rated current (DIN EN 61984)	16 A
Required plug-in slots	0.5		

PE connection data

Connection type PE	Screw connection via module frame
--------------------	-----------------------------------

Version

Wire connection cross section AWG, max.	AWG 14	Stripping length, rated connection	10 mm
Type of connection	PUSH IN with actuator	Wire connection cross section AWG, min.	AWG 20
Conductor cross-section, max.	2.5 mm ²	Conductor cross-section, min.	0.5 mm ²

Classifications

ETIM 6.0	EC000438	ETIM 7.0	EC000438
ETIM 8.0	EC000438	ETIM 9.0	EC000438

HDC MHE 4 MP

Technical data

ETIM 10.0	EC000438	ECLASS 9.0	27-44-02-17
ECLASS 9.1	27-44-02-17	ECLASS 10.0	27-44-02-17
ECLASS 11.0	27-44-02-17	ECLASS 12.0	27-44-02-17
ECLASS 13.0	27-44-02-17	ECLASS 14.0	27-44-02-17
ECLASS 15.0	27-44-02-17		

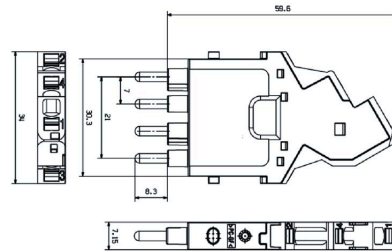
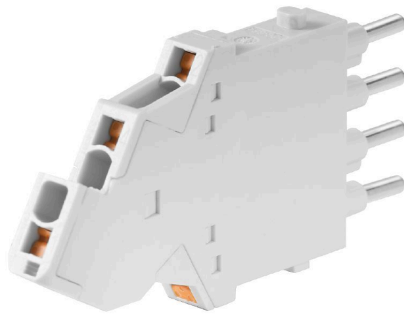
HDC MHE 4 MP

Weidmüller Interface GmbH & Co. KG
 Klingenbergstraße 26
 D-32758 Detmold
 Germany

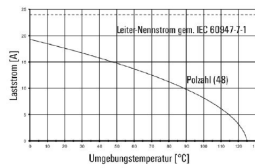
Drawings

www.weidmueller.com

Product image



HDC MHE 4 FQT mit HDC MHE 4 MQT /
 HD7V-K2,5



HDC MHE 4 FQT with HDC MHE 4 MQT /
 HD7V-K2,5

