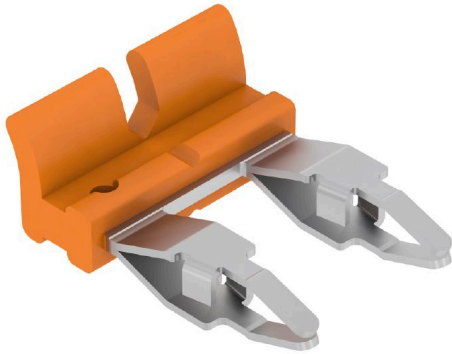


## Product image



### Adjustable cross-connections

Increase the flexibility of your cross-connections. The TERMSERIES CROSS-CONNECTION (TCC) enables individually adjustable cross-connections with up to 51 poles. The maximum number of pluggable poles has been increased to 32 poles. The strip material can be shortened to the required length very easily. The cross-connectors convince thanks to their easy handling and visibility as well as their universal connection possibilities. An additional web prevents the spring from deforming during assembly.

- Individually adjustable cross-connection with 51 poles
- Additional bar to avoid deformation of the spring
- Increased cross-connection – up to 32 poles possible
- Vibration resistance

### General ordering data

Version	TERMSERIES, Cross-connector
Order No.	<a href="#">2556350000</a>
Type	TCC 6.4/2 OR
GTIN (EAN)	4050118566826
Qty.	10 items

## TCC 6.4/2 OR

Weidmüller Interface GmbH &amp; Co. KG

Klingenbergstraße 26

D-32758 Detmold

Germany

www.weidmueller.com

## Technical data

## Approvals

ROHS	Conform
------	---------

## Dimensions and weights

Depth	4.8 mm	Depth (inches)	0.189 inch
Height	13.1 mm	Height (inches)	0.5157 inch
Width	9.8 mm	Width (inches)	0.3858 inch
Net weight	0.37 g		

## Temperatures

Storage temperature	-40 °C...85 °C	Ambient temperature	-40 °C...60 °C
Operating temperature			

## Environmental Product Compliance

RoHS Compliance Status	Compliant without exemption
REACH SVHC	No SVHC above 0.1 wt%

## Cross-connection data

Rated voltage	300 V	Rated current	17.5 A
Insulation	Yes	Touch-safe protection	Yes
Colour	orange	Number of cross-connected terminals	2
Number of poles	2	Pitch in mm (P)	6.40 mm
Type of mounting	Plugged	Version	cannot be cut to length

## Rated data UL

Rated current (UL)	10 A
--------------------	------

## General data

Version	cannot be cut to length		
Colour	orange		
UL94 flammability rating component	Component	Housing	
	UL94 flammability rating	V-0	

## Insulation coordination

Rated voltage	300 V
---------------	-------

## Connection data

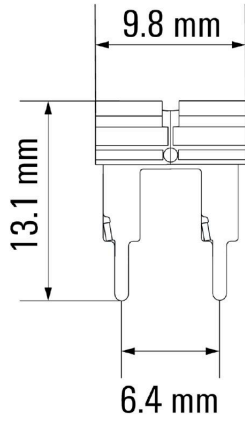
Pitch in mm (P)	6.40 mm
-----------------	---------

## Classifications

ETIM 6.0	EC002586	ETIM 7.0	EC002586
ETIM 8.0	EC002586	ETIM 9.0	EC002586
ETIM 10.0	EC002586	ECLASS 9.1	27-37-16-92
ECLASS 10.0	27-37-16-92	ECLASS 11.0	27-37-16-92
ECLASS 12.0	27-37-16-92	ECLASS 13.0	27-37-16-92
ECLASS 14.0	27-37-16-92	ECLASS 15.0	27-37-16-92

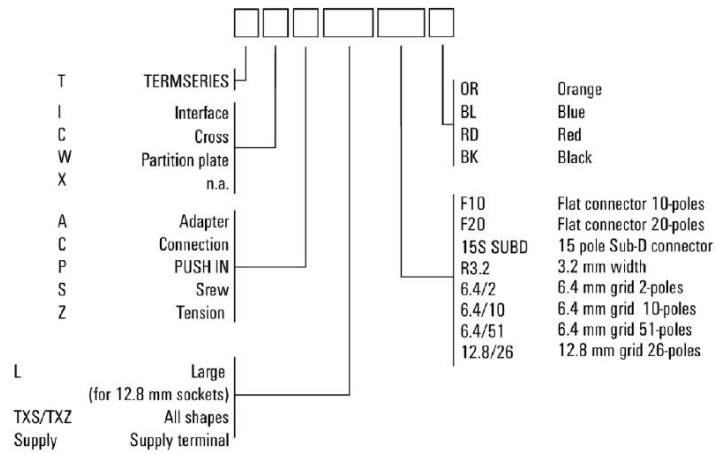
**Drawings**

**Dimensional drawing**



Miscellaneous

Type code TERMSERIES accessories



Type codes