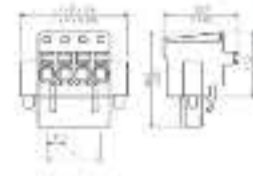


Quick access

- Device connectivity - OMNIMATE
- PCB connectors - OMNIMATE Signal
- Pitch 5.00 mm (0.197 inch) - Series BL
- Female plugs - PUSH IN spring connec
- BLF 5.00HC/90
- BLF 5.00HC/90F SN

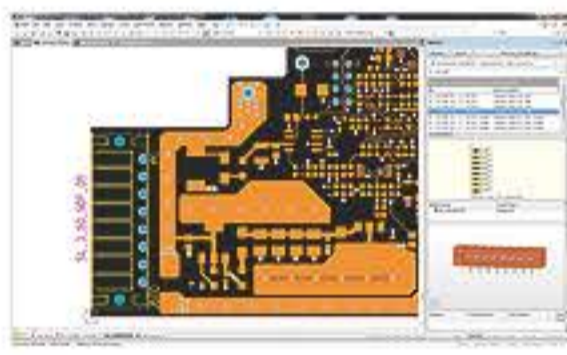
Online Catalogue » Device connectivity - OMNIMATE » PCB connectors - OMNIMATE Signal » Pitch 5.00 mm (0.197 inch) - Series BL/SL 5.00 » Female plugs - PUSH IN spring connection » BLF 5.00HC/90 » BLF 5.00HC/90F SN

BLF 5.00HC/10/90F SN BK BX



OMNIMATE® sample service

More information



OMNIMATE component libraries

Complete component libraries for your PCB design software

More information



General ordering data	
Available until	2016-04-08
Type	BLF 5.00HC/10/90F SN BK BX
Order No.	1979540000
Version	PCB plug-in connector, female plug, 5.00 mm, No. of poles: 10, 90°, PUSH IN, Clamping range, rated connection, max.: 3.31 mm², Box
GTIN (EAN)	4032248674749
Qty.	30 pc(s).
Product data	IEC: 400 V / 24 A / 0.2 - 2.5 mm² UL: 300 V / 18.5 A / AWG 26 - AWG 12
Packaging	Box
Dimensions and weights	
System parameters	
Material data	
Conductors suitable for connection	
Rated data acc. to IEC	
Rated data acc. to CSA	
Rated data acc. to UL 1059	
Downloads	
Classifications	
Notes	
Approvals	
Accessories	
Related products	

- Add to inquiry list
- PDF data sheet
- Product configurator
- CAD model
- Counterpart
- Accessories
- Related products
- Print view
- Help

Follow us on:

Print page Error message