

Weidmüller Service

Weidmüller Service

Customer specific solutions: best advice, best solutions	V.2
Overview of services	V.3
Digital support: RailDesigner®, M-Print® PRO, Online catalog	V.6

Best advice, best solutions

Services tailored to customers' needs

Service – at Weidmüller that means diversity. And it also means that you can take advantage of our comprehensive resources:

- Production of terminal rails and enclosures fitted with our modular terminals and other modules, and prewired
- Fitting of cable glands and the marking of terminals, conductors and enclosures according to your specification
- Competence in the processing of enclosure materials such as aluminum, plastics, sheet steel and stainless steel
- Flexibility in the product selection: besides Weidmüller products we can also integrate yours and even those of other manufacturers

This range of services enables Weidmüller to act as an external service provider to increase your capacities. And demanding standards guarantee a high level of quality every time.

The best advice for the best solutions

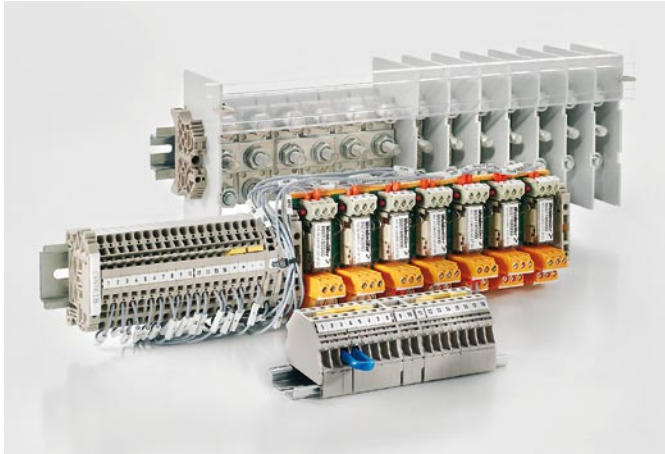
The start of a good partnership is always characterized by an intensive exchange of information to define the respective positions. Our contribution focuses on detailed advice with respect to:

- Optimum choice of products
- Practical pre-assembly
- Integration into your systems
- Consideration of requirements such as certification, classes of protection or hazard protection as required by your industry

That avoids mistakes right from the start – totally in keeping with the effective handling of the project, totally in keeping with perfect results. Our experience helps you create the foundation for good business and satisfied customers.



Overview of services



Production of terminal rails

Terminal rails are manufactured from steel, stainless steel, aluminum or copper to suit the diverse applications. And we can produce terminal rails with elongated or round holes, or in other forms to suit your requirements exactly. Terminal rails are fitted with modular terminals or electronic products, prewired and marked according to your specification.

The benefits for you

- No need to procure individual components
- No need to mount individual components
- No unnecessary stocks
- Just one order number for your pre-assembled terminal rail
- Constant high quality



Production of enclosures

High-tech brings benefits. Our state-of-the-art production methods open up new options for you:

- Inclusion of holes and threads in the enclosure
- Enclosure cover with hinges and other accessories if required
- More complex machining such as milling of contours or reaming of holes
- Special paint finishes: To protect against the effects of the weather, your enclosures can be painted individually. Simply specify the color and printing you require. Special paint finishes and powder coating are also possible.

Enclosures are adapted to suit the intended application exactly. You get a tailored, individual product and the quality is guaranteed by our adherence to demanding standards. Does your product require a special approval? Our accredited laboratory can test the complete product and confirm that its design complies with the standards! With every delivery we document the corresponding approvals (e.g., ATEX, GL, UL, GOST, etc.).



The benefits for you

- Enclosures in various sizes and materials
- Inclusion of optional accessories such as hinges and locks
- Complex machining processes and special packaging
- Ready-to-use, certified products for all types of applications.

Overview of services



Electronics production

We manufacture according to your specifications: ranging from PCB assembly to 100%-tested component assemblies. We bring the individual parts together according to your documents: whether for materials procurement, provision, or withdrawal from our stock. All production processes and the entire range of qualified expertise are at our disposal: from hand assembly to SMD assembly. Our state-of-the-art production and testing facilities guarantee consistent quality.

The benefits for you

- Solutions for custom tasks
- Complex component assemblies including enclosures from a single-source supplier
- Reduction of your procurement and storage of individual parts

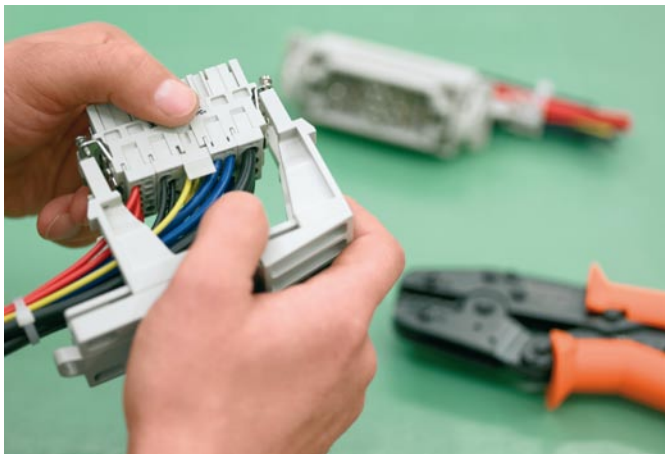


“RockStar” heavy-duty connectors and cable assembly

To help ensure that your switchgear cabinets and installations are put into operation without delay, Weidmüller can supply pre-fabricated components such as heavy-duty connectors. These are assembled and prewired according to your specification and are supplied ready to connect. If required, we can also supply the finished enclosure with the heavy-duty connectors already integrated. An entire spectrum of application possibilities are available with our ConCept modular connector system. This modular system enables the flexible combination of diverse modules. Custom crimping and cabling is included on request! Do you prefer a personal touch? We can laser-label your company logo and article number onto our RockStars! In total compliance with your requirements.

The benefits for you

- Special requirements with respect to font, number of characters, material and printing durability for your markers
- Prewiring of connectors saves you valuable installation time
- Modular connector system can be ordered pre-crimped



Marking

Whether multi-line labeling, white or colored terminal markers or group designations, the Weidmüller range can cater for every marking task – fast, clear and according to European standards. However, we can also supply you with preprinted markers to match your specification. Simply tell us the type of marker you require, the color, the printing sequence and the text, and we'll look after the rest. If required, we can also install the finished markers during assembly.

Equipment labelling

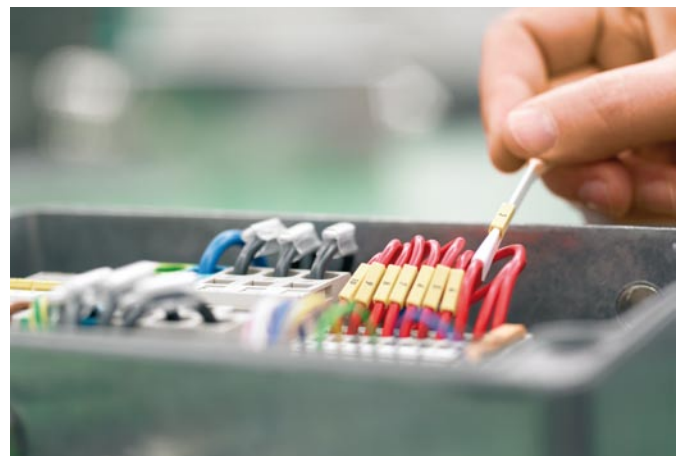
Device markers are essential for marking your electrical installations. Therefore, Weidmüller can supply rating plates designed specially for your application. A wide range of different shapes, colors, materials and fixings – riveted, screwed or bonded with adhesive – are available from which to choose. And a whole range of different fonts mean that we can handle every request.

Integration of special accessories

In some cases it is necessary to integrate special accessories. This is no problem for Weidmüller because we can integrate buttons, switches, warning lamps, plugs or couplings – all properly planned, fitted, connected and tested. And that includes the products of other manufacturers as well as our own. We shall also be happy to advise you on standard accessories such as hinges.

The benefits for you

- Rating plates in various materials
- Individual printing or laser engraving
- Equipment and accessories to your specification



Digital support

RailDesigner®

RailDesigner® is a Weidmüller program for planning, assembling and ordering both terminal rails and enclosures. And it's so easy to use:

- Fast acquisition of all necessary data
- Realistic-looking graphic user interface and ideal conditions for simple assembly of your terminal rails and enclosures with all the necessary components
- Simply click on all the products you need and add accessories such as markers or cross-connectors
- To configure an individual enclosure, simply choose an enclosure type from a standard range and then add holes and other accessories to suit your requirements

These parameters form the foundation for a perfect software assistant. You can view the enclosure on the screen complete with all the configured products, and print out a hardcopy, or simply send the file to Weidmüller via e-mail in the form of an order. RailDesigner® provides you with optimum planning security and clarity during the design phase. And hence simplifies the ordering process enormously.

M-Print® PRO label designer

The comprehensive range of Weidmüller services includes the M-Print® PRO software.

This is a professional-standard, Windows®-based program for printing and ordering labels and markers that is coordinated with our current printing systems and marking materials.

M-Print® PRO enables you to design your labelling materials professionally and quickly. Texts, borders, lines, graphics, barcodes, serial numbers and photographs are all possible. The interface to RailDesigner® or your CAE system enables the transfer of all your configured data.

Online catalog

If you have questions about the specifications and details of our products, perhaps even outside normal business hours, then our online catalog at <http://www.weidmuller.com/catalog> open 24 hours a day, 365 days a year – is the perfect source of information. Besides product features and part numbers, it contains extensive additional information on all product groups. And for further information, offers and your personal contact, simply consult the Weidmüller website at www.weidmuller.com.



Index

Index	Index Type / Index Order No.	X.2
	Addresses worldwide	X.8

Type	Order No.	Page	Type	Order No.	Page	Type	Order No.	Page	Type	Order No.	Page
E			MRS 60Vdc 1CO	8556060000	C.4	PAC-GF30-SD15-V1-L1111	7789076xxx	B.16	PAC-S300-SD25-V2-L1111	7789230xxx	B.6
EW 35	0383560000	A.7	MRS 60Vdc 1CO	8556060000	C.5	PAC-GF30-SD25-V0-L1111	7789072xxx	B.16	PAC-S300-SD25-V3-L1111	7789233xxx	B.6
EWK 2	0199360000	A.7	MRZ 120Vuc 1CO	8556100000	C.25	PAC-GF30-SD25-V1-L1111	7789073xxx	B.16	PAC-S300-SD25-V4-L1111	7789196xxx	B.6
F			MRZ 120Vuc 1CO RC	8825960000	C.26	PAC-GF30-SD37-V0-L1111	7789074xxx	B.16	PAC-S300-SD37-V0-L1111	7789225xxx	B.6
FBK 10/100 RK	8235360000	C.33	MRZ 12Vdc 1CO	8556140000	C.25	PAC-M340-HE20-V0-L1111	7789387xxx	B.12	PAC-S300-SD37-V1-L1111	7789226xxx	B.6
FBK 10/200 RK	8235380000	C.33	MRZ 230Vac 1CO	8556090000	C.25	MRZ 230VUC 1CO	8825980000	C.26	PAC-S300-SD37-V2-L1111	7789231xxx	B.6
FBK 10/350 RK	8235410000	C.33	MRZ 24VDC 1CO	8533660000	C.25	MRZ 24VDC 1CO	8533660000	C.25	PAC-S400-HE20-V0-L1111	7789290xxx	B.7
FBK 10/400 RK	8235420000	C.33	MRZ 24VDC 1CO	8533660000	C.5	MRZ 24VDC 1CO	8533660000	C.4	PAC-S400-HE20-V1-L1111	7789291xxx	B.7
FBK 10/500 RK	8235440000	C.33	MRZ 24VDC 1CO 5uAu	8596080000	C.6	MRZ 24VDC ACT	8660910000	C.26	PAC-S400-HE20-V2-L1111	7789292xxx	B.7
FBK 40/100 RK	8216350000	C.33	MRZ 24VDC 1CO	8533660000	C.25	MRZ 24Vdc 1CO	8556120000	C.25	PAC-S400-HE20-V3-L1111	7789293xxx	B.7
FBK 40/150 RK	8216360000	C.33	MRZ 24VDC 1CO	8533660000	C.4	MRZ 48Vuc 1CO	8556110000	C.25	PAC-S400-RV12-V0-L1111	7789283xxx	B.7
FBK 40/200 RK	8216370000	C.33	MRZ 5Vdc 1CO	8556150000	C.25	MRZ 5Vdc 1CO	8556150000	C.25	PAC-S400-RV24-V0-L1111	7789273xxx	B.7
FBK 40/250 RK	8216380000	C.33	MRZ 60Vdc 1CO	8556130000	C.25	MRZ 5Vdc 1CO	8556150000	C.25	PAC-S400-RV24-V1-L1111	7789274xxx	B.7
FBK 40/300 RK	8216390000	C.33	MXS 120Vuc 1CO BASIS	8826030000	C.35	MRZ 60Vdc 1CO	8556130000	C.25	PAC-S400-RV36-V0-L1111	7789275xxx	B.7
FBK 40/350 RK	8216400000	C.33	MXS 230VAC 1CO BASIS	8826050000	C.35	MXS 120Vuc 1CO BASIS	8826030000	C.35	PAC-S400-RV36-V1-L1111	7789276xxx	B.7
FBK 40/400 RK	8216410000	C.33	MXS 24VDC 1CO BASIS	8826010000	C.35	MXS 230VAC 1CO BASIS	8826050000	C.35	PAC-S400-SD25-V0-L1111	7789285xxx	B.7
FBK 40/500 RK	8235350000	C.33	MXS 120Vuc 1CO BASIS	8826020000	C.35	MXS 24VDC 1CO BASIS	8826010000	C.35	PAC-S400-SD25-V1-L1111	7789286xxx	B.7
			MXS 230VAC 1CO BASIS	8826040000	C.35	MXZ 24VDC 1CO BASIS	8826000000	C.35	PAC-S400-SD25-V2-L1111	7789287xxx	B.7
			MXZ 24VDC 1CO BASIS	8826000000	C.35				PAC-S400-SD25-V3-L1111	7789288xxx	B.7
									PAC-S400-SD25-V4-L1111	7789284xxx	B.7
									PAC-S400-SD25-V5-L1111	7789285xxx	B.7
									PAC-S400-SD25-V6-L1111	7789286xxx	B.7
									PAC-S400-SD25-V7-L1111	7789287xxx	B.7
									PAC-S400-SD25-V8-L1111	7789288xxx	B.7
									PAC-S400-SD25-V9-L1111	7789289xxx	B.7
									PAC-S400-SD25-V10-L1111	7789290xxx	B.7
									PAC-S400-SD25-V11-L1111	7789291xxx	B.7
									PAC-S400-SD25-V12-L1111	7789292xxx	B.7
									PAC-S400-SD25-V13-L1111	7789293xxx	B.7
									PAC-S400-SD25-V14-L1111	7789294xxx	B.7
									PAC-S400-SD25-V15-L1111	7789295xxx	B.7
									PAC-S400-SD25-V16-L1111	7789296xxx	B.7
									PAC-S400-SD25-V17-L1111	7789297xxx	B.7
									PAC-S400-SD25-V18-L1111	7789298xxx	B.7
									PAC-S400-SD25-V19-L1111	7789299xxx	B.7
									PAC-S400-SD25-V20-L1111	7789300xxx	B.7
									PAC-S400-SD25-V21-L1111	7789301xxx	B.7
									PAC-S400-SD25-V22-L1111	7789302xxx	B.7
									PAC-S400-SD25-V23-L1111	7789303xxx	B.7
									PAC-S400-SD25-V24-L1111	7789304xxx	B.7
									PAC-S400-SD25-V25-L1111	7789305xxx	B.7
									PAC-S400-SD25-V26-L1111	7789306xxx	B.7
									PAC-S400-SD25-V27-L1111	7789307xxx	B.7
									PAC-S400-SD25-V28-L1111	7789308xxx	B.7
									PAC-S400-SD25-V29-L1111	7789309xxx	B.7
									PAC-S400-SD25-V30-L1111	7789310xxx	B.7
									PAC-S400-SD25-V31-L1111	7789311xxx	B.7
									PAC-S400-SD25-V32-L1111	7789312xxx	B.7
									PAC-S400-SD25-V33-L1111	7789313xxx	B.7
									PAC-S400-SD25-V34-L1111	7789314xxx	B.7
									PAC-S400-SD25-V35-L1111	7789315xxx	B.7
									PAC-S400-SD25-V36-L1111	7789316xxx	B.7
									PAC-S400-SD25-V37-L1111	7789317xxx	B.7
									PAC-S400-SD25-V38-L1111	7789318xxx	B.7
									PAC-S400-SD25-V39-L1111	7789319xxx	B.7
									PAC-S400-SD25-V40-L1111	7789320xxx	B.7
									PAC-S400-SD25-V41-L1111	7789321xxx	B.7
									PAC-S400-SD25-V42-L1111	7789322xxx	B.7
									PAC-S400-SD25-V43-L1111	7789323xxx	B.7
									PAC-S400-SD25-V44-L1111	7789324xxx	B.7
									PAC-S400-SD25-V45-L1111	7789325xxx	B.7
									PAC-S400-SD25-V46-L1111	7789326xxx	B.7
									PAC-S400-SD25-V47-L1111	7789327xxx	B.7
									PAC-S400-SD25-V48-L1111	7789328xxx	B.7
									PAC-S400-SD25-V49-L1111	7789329xxx	B.7
									PAC-S400-SD25-V50-L1111	7789330xxx	B.7
									PAC-S400-SD25-V51-L1111	7789331xxx	B.7
									PAC-S400-SD25-V52-L1111	7789332xxx	B.7
									PAC-S400-SD25-V53-L1111	7789333xxx	B.7
									PAC-S400-SD25-V54-L1111	7789334xxx	B.7
									PAC-S400-SD25-V55-L1111	7789335xxx	B.7
									PAC-S400-SD25-V56-L1111	7789336xxx	B.7
									PAC-S400-SD25-V57-L1111	7789337xxx	B.7
									PAC-S400-SD25-V58-L1111	7789338xxx	B.7
									PAC-S400-SD25-V59-L1111	7789339xxx	B.7
									PAC-S400-SD25-V60-L1111	7789340xxx	B.7
									PAC-S400-SD25-V61-L1111	7789341xxx	B.7
									PAC-S400-SD25-V62-L1111	7789342xxx	B.7
									PAC-S400-SD25-V63-L1111	7789343xxx	B.7
									PAC-S400-SD25-V64-L1111	7789344xxx	B.7
									PAC-S400-SD25-V65-L1111	7789345xxx	B.7
									PAC-S400-SD25-V66-L1111	7789346xxx	B.7
									PAC-S400-SD25-V67-L1111	7789347xxx	B.7
									PAC-S400-SD25-V68-L1111	7789348xxx	B.7
									PAC-S400-SD25-V69-L1111	7789349xxx	B.7
									PAC-S400-SD25-V70-L1111	7789350xxx	B.7
									PAC-S400-SD25-V71-L1111	7789351xxx	B.7
									PAC-S400-SD25-V72-L1111	7789352xxx	B.7
									PAC-S400-SD25-V73-L1111	7789353xxx	B.7
									PAC-S400-SD25-V74-L1111	7789354xxx	B.7
									PAC-S400-SD25-V75-L1111	7789355xxx	B.7
									PAC-S400-SD25-V76-L1111	7789356xxx	B.7
									PAC-S400-SD25-V77-L1111	7789357xxx	B.7
									PAC-S400-SD25-V78-L1111	7789358xxx	B.7
									PAC-S400-SD25-V79-L1111	7789359xxx	B.7
									PAC-S400-SD25-V80-L1111	7789360xxx	B.7
									PAC-S400-SD25-V81-L1111	7789361xxx	B.7
									PAC-S400-SD25-V82-L1111	7789362xxx	B.7
									PAC-S400-SD25-V83-L1111	7789363xxx	B.7
									PAC-S400-SD25-V84-L1111	7789364xxx	B.7
									PAC-S400-SD25-V85-L1111	7789365xxx	B.7
									PAC-S400-SD25-V86-L1111	7789366xxx	B.7
									PAC-S400-SD25-V87-L1111	7789367xxx	B.7
									PAC-S400-SD25-V88-L1111	7789368xxx	B.7
									PAC-S400-SD25-V89-L1111	7789369xxx	B.7
									PAC-S400-SD25-V90-L1111	7789370xxx	B.7
									PAC-S400-SD25-V91-L1111	7789371xxx	B.7
									PAC-S400-SD25-V92-L1111	7789372xxx	B.7
									PAC-S400-SD25-V93-L1111	7789373xxx	B.7
									PAC-S400-SD25-V94-L1111	7789374xxx	B.7
									PAC-S400-SD25-V95-L1111	7789375xxx	B.7
									PAC-S400-SD25-V96-L1111	7789376xxx	B.7

Type	Order No.	Page	Type	Order No.	Page	Type	Order No.	Page	Type	Order No.	Page
RD-9, Male standard	915933	A.9	RS SD25 SZ	8537370000	A.11	RS32ES-D-L H/Z	9447930000	B.32	SIM S7/300 FB40 3.0M	8433290300	C.8
RD-9, Female standard	915934	A.9	RS SD25B LP3R	8019900000	A.12	RS32ES-DP RSV1,6/V	9441710000	B.21	SIM S7/300 FB40 5.0M	8433290500	C.8
RD-9US, Male w/accessory holes	910638	A.10	RS SD25B UNC 4.40 LP2N	8005191001	A.11	RS32ES-DP RSV1,6/V	9441710000	B.37	SIM S7/400 FB4*10 2.0M	8335910200	C.9
RD-9US, Female w/accessory holes	910641	A.10	RS SD25B UNC LPK2	8155620000	A.12	RS32ES-DP/F RSV1,6/V	9441570000	B.21	SIM S7/400 FB4*10 2.5M	8335910250	C.9
RD-9US, Male standard	915935	A.9	RS SD25S LP3R	8019950000	A.12	RS32ES-DP/F RSV1,6/V	9441570000	B.37	SIM S7/400 FB4*10 3.0M	8335910300	C.9
RD-9US, Female standard	915936	A.9	RS SD25S UNC 4.40 LP2N	8005181001	A.12	RS32ES-I RSV1,6/V	9441870000	B.21	SIM S7/400 FB4*10 5.0M	8335910500	C.9
RI-IDC 10, Male w/accessory holes	914890	A.7	RS SD25S UNC LPK2	8155650000	A.11	RS32ESI RSV1,6/V	9441870000	B.36	SIM S7/400 FB4*10 LM	833591xxxx	C.9
RI-IDC 10, Male standard	915911	A.7	RS SD37 BZ	8537250000	A.11	RS32ES-L H/V	9445910000	B.21	SIM S7/400 FB40 2.0M	8335900200	C.5
RI-IDC 14, Male w/accessory holes	914891	A.7	RS SD37 SZ	8537240000	A.11	RS32ES-L H/V	9445910000	B.30	SIM S7/400 FB40 2.5M	8335900250	C.9
RI-IDC 14, Male standard	915912	A.7	RS SD37B LP3R	8019910000	A.12	RS32ES-L H/Z	9447910000	B.21	SIM S7/400 FB40 3.0M	8335900300	C.9
RI-IDC 16, Male w/accessory holes	914892	A.7	RS SD37B UNC 4.40 LP2N	8003891001	A.12	RS32ES-L H/Z	9447910000	B.30	SIM S7/400 FB40 5.0M	8335900500	C.9
RI-IDC 16, Male standard	915913	A.7	RS SD37B UNC LPK2	8155630000	A.12	RS32ES-S-L H/V	9445870000	B.21	SSR 24V ACDC/230VAC 2A	8576370000	C.34
RI-IDC 20, Male w/accessory holes	914893	A.7	RS SD37S LP3R	8019960000	A.11	RS32ES-S-L H/V	9445870000	B.31	SSR 24V ACDC/24 VDC 2A	8576340000	C.34
RI-IDC 20, Male standard	915914	A.7	RS SD37S UNC 4.40 LP2N	8003881001	A.12	RS32ES-T H/V	9445960000	B.21	SSS Relais 24V/230V 1Aac	4061210000	C.28
RI-IDC 26, Male w/accessory holes	914894	A.7	RS SD37S UNC LPK2	8155660000	A.11	RS32ES-T H/V	9445960000	B.35	SSS Relais 24V/230V 1Aac	4061210000	C.28
RI-IDC 26, Male standard	915915	A.7	RS SD50 SZ	8537350000	A.11	RS32ES-TL H/V	9445970000	B.21	SSS Relais 24V/24V 0,1Acd	4061180000	C.27
RI-IDC 30, Male w/accessory holes	914895	A.7	RS SD50B LP3R	8019920000	A.12	RS32ES-TL H/V	9445970000	B.35	SSS Relais 24V/24V 0,1Acd	4061180000	C.34
RI-IDC 30, Male standard	915916	A.7	RS SD50B UNC 4.40 LP2N	8005171001	A.12	RS32ES-TL H/Z	9447970000	B.21	SSS Relais 24V/24V 2Acd	4061190000	C.29
RI-IDC 34, Male w/accessory holes	914896	A.7	RS SD50S LP3R	8019970000	A.12	RS32ES-TL H/Z	9447970000	B.35	SSS Relais 24V/24V 2Acd	4061190000	C.30
RI-IDC 34, Male standard	915917	A.7	RS SD50S UNC 4.40 LP2N	8005161001	A.12	RS4ESA/I-M-DP SD/V	9448100000	B.54	SSS Relais 24V/24V 2Acd	4061190000	C.34
RI-IDC 40, Male w/accessory holes	914897	A.7	RS SD50S UNC LPK2	8155670000	A.11	RS4ESA/I-M-DP SD/V	9448100000	B.55	SSS Relais 24V/24V 0,1Acd	4064320000	C.27
RI-IDC 40, Male standard	915918	A.7	RS SD9 BZ	8537320000	A.11	RS4ESA-DP SD/V	9448000000	B.54	SSS Relais 5V/24V 2Acd	4064310000	C.28
RI-IDC 50, Male w/accessory holes	914898	A.7	RS SD9 SZ	8537260000	A.11	RS4ESA-DP SD/V	9448000000	B.55	SSS Relais 60V/230V 1Aac	4061220000	C.28
RI-IDC 50, Male standard	915919	A.7	RS SD9B LP3R	8019880000	A.12	RS8E1SA MICRO SD/V	9448040000	B.54	SSS Relais 60V/24V 0,1Acd	4061230000	C.27
RI-IDC 60, Male w/accessory holes	914899	A.7	RS SD9B UNC 4.40 LP2N	8003911001	A.12	RS8E1SA MICRO SD/V	9448040000	B.57	SSS Relais 60V/24V 2Acd	4061200000	C.29
RI-IDC 60, Male standard	915920	A.7	RS SD9B UNC LPK2	8216480000	A.11	RS8EA PREM/APR SD/V	9448030000	B.54	SUPPORTRSM16SLIM-1RTH7V	1094970000	B.42
RI-IDC 64, Male w/accessory holes	914900	A.7	RS SD9S LP3R	8019930000	A.12	RS8EA PREM/APR SD/V	9448030000	B.57	SUPPORTRSM16SLIM-1RTH7V	1094970000	B.47
RI-IDC 64, Male standard	915921	A.7	RS SD9S UNC 4.40 LP2N	8003901001	A.12	RS8ESA/I-M-DP SD/V	9448110000	B.54			
RJ 4A	912171	A.15	RS SD9S UNC LPK2	8259010000	A.11	RS8ESA/I-M-DP SD/V	9448110000	B.56			
RJ 6A	911915	A.15	RS VERT16 LPK2	8234620000	A.13	RS8ESA/I-M-DP SD/Z	9449110000	B.54			
RJ 8A	911916	A.15	RS VERT8 LPK2	8252010000	A.13	RS8ESA/I-M-DP SD/Z	9449110000	B.56			
RS F10 8R OUT 24VDC	8329800000	C.18	RS12ES-D-L H/V	9445630000	B.21	RS8ESA-DP SD/V	9448010000	B.54	TS 35 x 15	0122800000	A.7
RS F10 8RS OUT LMZF	8430990000	C.19	RS12ES-D-L H/V	9445630000	B.23	RS8ESA-DP SD/V	9448010000	B.56	TS 35 x 7.5	0498340000	A.7
RS F10 I/O8 LD LPK2	8224260000	C.13	RS16AIO/I-M-DP SD/Z	9449120000	B.54	RS8ES-D-L H/V	9445530000	B.21			
RS F10 I/O8 LMZF	8428870000	C.11	RS16AIO/I-M-DP SD/Z	9449120000	B.58	RS8ES-D-L H/V	9445530000	B.22			
RS F10 I/O8 LMZF	8428870000	C.4	RS16E RSV1,6/V	9441500000	B.21	RS8ES-DP RSV 1,6/V	9441540000	B.21			
RS F10 I/O8 LMZF	8428870000	C.5	RS16E RSV1,6/V	9441500000	B.27	RS8ES-DP RSV 1,6/V	9441540000	B.22	WS 12/6 NEUTRAL	1061160000	C.35
RS F10 I/O8 LMZF	8428870000	C.6	RS16EC-O-D 115V _{ac} H/V	9446910000	B.39	RS-ELCO 38 F/L	912128	A.16			
RS F10 I/O8 LPK2	8224290000	C.13	RS16EC-O-D 115V _{ac} H/V	9446910000	B.41	RS-ELCO 38 F/R	912129	A.16			
RS F10 INIT8 LD LMZF	8428890000	C.14	RS16EC-O-D 230Vac H/V	9446920000	B.39	RS-ELCO 38 M/L	912126	A.16			
RS F10 LP2N 5/10	224961001	A.8	RS16EC-O-D 230Vac H/V	9446920000	B.41	RS-ELCO 38 M/R	912127	A.16	ZQV 4N/10 BL	1794050000	C.35
RS F10 LP3R 3/12	8012850000	A.8	RS16EC-O-D 24-48V H/V	9446900000	B.39	RS-ELCO 56 F/L	912133	A.16	ZQV 4N/10 GE	1758260000	C.35
RS F10 LPK 2H/12	8155610000	A.6	RS16EC-O-D 24-48V H/V	9446900000	B.40	RS-ELCO 56 F/R	912134	A.16	ZQV 4N/10 RT	1794040000	C.35
RS F10 LPK 2H/12	8248050000	C.12	RS16ES H/V	9445700000	B.21	RS-ELCO 56 M/L	912131	A.16	ZQV 4N/10 SW	1794060000	C.35
RS F10 LPK 2H/12	8248050000	C.4	RS16ES H/V	9445700000	B.24	RS-ELCO 56 M/R	912132	A.16	ZQV 4N/2 BL	1793960000	C.35
RS F10 LPK 2H/12	8248050000	C.5	RS16ES H/Z	9447700000	B.21	RSM 16C-1RT H/V	9445100000	B.42	ZQV 4N/2 GE	1758250000	C.35
RS F10 LPK 2H/12	8248050000	C.6	RS16ES H/Z	9447700000	B.24	RSM 16C-1RT H/V	9445100000	B.46	ZQV 4N/2 RT	1793950000	C.35
RS F10 Z	8537190000	A.6	RS16ES-3E/I RSV 1,6/V	9441600000	B.21	RSM 16-NW/1RT 24V(+/-)	9444610000	B.42	ZQV 4N/2 SW	1793970000	C.35
RS F14 LP2N 5/14	225061001	A.8	RS16ES-3E/I RSV 1,6/V	9441600000	B.29	RSM 16-NW/1RT 24V(+/-)	9444610000	B.45	ZQV 4N/20 BL	1909100000	C.35
RS F14 LP3R 3/14	8012860000	A.8	RS16ESA/I-M-DP SD/V	9448120000	B.54	RSM12C-1RT H/V	9445060000	B.42	ZQV 4N/20 GE	1909020000	C.35
RS F14 LPK 2H/16	8258980000	A.6	RS16ESA/I-M-DP SD/V	9448120000	B.58	RSM12C-1RT H/V	9445060000	B.44	ZQV 4N/20 RT	1909150000	C.35
RS F14 Z	8537200000	A.6	RS16ESA-DP SD/V	9448020000	B.54	RSM16-1T/CDE-EV 24V-H/V	9445180000	B.42	ZQV 4N/20 SW	1909120000	C.35
RS F16 LP2N 5/16	225161001	A.8	RS16ESA-DP SD/V	9448020000	B.58	RSM16 1T/CDE-EV 24V-H/V	9445180000	B.51	ZQV 4N/3 BL	1793990000	C.35
RS F16 LP3R 3/18	8012870000	A.8	RS16ES-D H/V	9445720000	B.21	RSM16 SLIM-1CO H/V	1079390000	B.42	ZQV 4N/3 GE	1762630000	C.35
RS F16 LPK 2H/18	8265540000	A.6	RS16ES-D H/V	9445720000	B.25	RSM16 SLIM-1CO H/V	1079390000	B.47	ZQV 4N/3 RT	1793980000	C.35
RS F20 LP2N 5/20	224261001	A.8	RS16ES-D-F H/V	9445820000	B.21	RSM16-1RT-Fo H/V	9445140000	B.42	ZQV 4N/3 SW	1794000000	C.35
RS F20 LP3R 3/21	8012910000	A.8	RS16ES-D-F H/V	9445820000	B.26	RSM16-1RT-Fo H/V	9445140000	B.49	ZQV 4N/4 BL	1794020000	C.35
RS F20 LPK 2H/22	8155600000	A.6	RS16ES-D-L H/V	9445750000	B.21	RSM16-1RT-Fu H/V	9445120000	B.42	ZQV 4N/4 GE	1762620000	C.35
RS F20 Z	8537110000	A.6	RS16ES-D-L H/V	9445750000	B.25	RSM16-1RT-Fu H/V	9445120000	B.50	ZQV 4N/4 RT	1794010000	C.35
RS F26 LP2N 5/26	224861001	A.8	RS16ES-D-L H/Z	9447750000	B.21	RSM16-1RT-Fu H/Z	9447120000	B.42	ZQV 4N/4 SW	1794030000	C.35
RS F26 LP3R 3/27	8012920000	A.8	RS16ES-D-L H/Z	9447750000	B.25	RSM16-1RT-Fu H/Z	9447120000	B.50			
RS F26 LPK 2H/28	8213470000	A.6	RS16ES-D-L H/V	9445730000	B.21	RSM16-2RT H/V	9445160000	B.42			
RS F26 Z	8537180000	A.6	RS16ES-D-L H/V	9445730000	B.25	RSM16-2RT H/V	9445160000	B.48			
RS F34 LP2N 5/34	224361001	A.8	RS16ES-D-L H/Z	9447730000	B.21	RSM16C-1RT H/Z	9447100000	B.42			
RS F34 LP3R 3/36	8012930000	A.8	RS16ES-D-L H/Z	9447730000	B.25	RSM16C-1RT H/Z	9447100000	B.46			
RS F34 LPK 2H/36	8155590000	A.6	RS16es-DP RSV1,6/V	9441700000	B.21	RSM16C-2RT H/Z	9447160000	B.42			
RS F34 Z	8537130000	A.6	RS16es-DP RSV1,6/V	9441700000	B.28	RSM16C-2RT H/Z	9447160000	B.48			
RS F40 16RS OUT 24VDC	8224181001	C.17	RS16ES-DP/F RSV1,6/V	9441560000	B.21	RSM16-NZ/1RT 24V (-/+)	9444660000	B.42			
RS F40 16RS OUT 24VDC E	8224191001	C.17	RS16ES-DP/F RSV1,6/V	9441560000	B.28	RSM16-NZ/1RT 24V (-/+)	9444660000	B.45			
RS F40 32RS OUT LMZF	8431000000	C.20	RS16ES-I RSV1,6/V	9441860000	B.21	RSM32-1RT-Fu H/V	9445220000	B.42			
RS F40 I/O32 LMZF	8428880000	C.11	RS16ES-I RSV1,6/V	9441860000	B.27	RSM32-1RT-Fu H/V	9445220000	B.53			
RS F40 INIT32 LD LMZF	8428900000	C.15	RS16ES-L H/V	9445710000	B.21	RSM32C-1CO 24VDC H/V	1108470000	B.42			
RS F40 INIT32 LMZF	8430980000	C.15	RS16ES-L H/V	9445710000	B.24	RSM32C-1CO 24VDC H/V	1108470000	B.52			
RS F40 LP2N 5/40	224461001	A.8	RS16ES-L H/Z	9447710000	B.21	RSM32C-1RT H/Z	9447200000	B.42			
RS F40 LP3R 3/42	8012940000	A.8	RS16ES-L H/Z	9447710000	B.24	RSM32C-1RT H/Z	9447200000	B.52			
RS F40 LPK 2H/42	8155580000	A.6	RS16ES-S-L H/V	9445810000	B.21	RSM8C-1RT H/V	9445000000	B.42			
RS F40 LPK 2H/42	8248060000	C.12	RS16ES-S-L H/V								

Order No.	Type	Page	Order No.	Type	Page	Order No.	Type	Page	Order No.	Type	Page
910000			0122000000			4050000000					
910075	RD-37, Female w/accessory holes	A.10	0122800000	TS 32	A.7	4058570000	RCL424024	C.34	7789108xxx	PAC-UNIV-RV12-F-L11M	C.32
910638	RD-9JS, Male w/accessory holes	A.10							7789110xxx	PAC-QTUM-RV24-V0-L11M	B.11
910640	RD-37JS, Female w/accessory holes	A.10							7789112xxx	PAC-QTUM-RV24-V2-L11M	B.11
910641	RD-9JS, Female w/accessory holes	A.10							7789113xxx	PAC-QTUM-RV24-V3-L11M	B.11
910642	RD-37JS, Male w/accessory holes	A.10							7789118xxx	PAC-QTUM-RV36-V0-L11M	B.11
910644	RD-15JS, Male w/accessory holes	A.10							7789119xxx	PAC-QTUM-HE20-V0-L11M	B.11
910645	RD-25JS, Female w/accessory holes	A.10							7789120xxx	PAC-QTUM-HE20-V1-L11M	B.11
910648	RD-25JS, Male w/accessory holes	A.10							7789121xxx	PAC-QTUM-HE20-V2-L11M	B.11
									7789123xxx	PAC-QTUM-SD37-V0-L11M	B.11
									7789124xxx	PAC-QTUM-SD15-V0-L11M	B.11
									7789125xxx	PAC-QTUM-SD25-V0-L11M	B.11
									7789126xxx	PAC-QTUM-SD25-V1-L11M	B.11
									7789133xxx	PAC-QTUM-HE20-V3-L11M	B.11
									7789134xxx	PAC-QTUM-SD25-V2-L11M	B.11
									7789135xxx	PAC-QTUM-SD25-V3-L11M	B.11
									7789136xxx	PAC-QTUM-SD25-V4-L11M	B.11
									7789137xxx	PAC-QTUM-SD25-V5-L11M	B.11
									7789151xxx	PAC-CTLX-HE20-V7-L11M	B.15
									7789152xxx	PAC-CTLX-HE20-V8-L11M	B.15
									7789153xxx	PAC-CTLX-RV24-V2-L11M	B.15
									7789154xxx	PAC-CTLX-RV24-V3-L11M	B.15
									7789155xxx	PAC-CTLX-RV24-V4-L11M	B.15
									7789156xxx	PAC-CTLX-SD25-V4-L11M	B.15
									7789157xxx	PAC-CTLX-SD25-V5-L11M	B.15
									7789158xxx	PAC-CTLX-SD25-V6-L11M	B.15
									7789159xxx	PAC-CTLX-SD25-V7-L11M	B.15
									7789165xxx	PAC-CTLX-SD37-V1-L11M	B.15
									7789190xxx	PAC-S300-RV24-V0-L11M	B.6
									7789191xxx	PAC-S300-RV12-V0-L11M	B.6
									7789192xxx	PAC-S300-HE20-V0-L11M	B.6
									7789193xxx	PAC-S300-SD15-V0-L11M	B.6
									7789194xxx	PAC-S300-SD25-V0-L11M	B.6
									7789195xxx	PAC-S300-SD15-V4-L11M	B.6
									7789196xxx	PAC-S300-SD25-V4-L11M	B.6
									7789210xxx	PAC-S300-RV24-V2-L11M	B.6
									7789211xxx	PAC-S300-RV24-V3-L11M	B.6
									7789212xxx	PAC-S300-RV24-V4-L11M	B.6
									7789214xxx	PAC-S300-RV24-V5-L11M	B.6
									7789215xxx	PAC-S300-RV36-V0-L11M	B.6
									7789219xxx	PAC-S300-RV12-V1-L11M	B.6
									7789220xxx	PAC-S300-RV24-V6-L11M	B.6
									7789221xxx	PAC-S300-HE20-V1-L11M	B.6
									7789222xxx	PAC-S300-HE20-V2-L11M	B.6
									7789223xxx	PAC-S300-HESD-V0-L11M	B.6
									7789224xxx	PAC-S300-SD15-V1-L11M	B.6
									7789225xxx	PAC-S300-SD37-V0-L11M	B.6
									7789226xxx	PAC-S300-RV24-V1-L11M	B.6
									7789227xxx	PAC-S300-SD15-V2-L11M	B.6
									7789228xxx	PAC-S300-SD15-V3-L11M	B.6
									7789229xxx	PAC-S300-SD25-V1-L11M	B.6
									7789230xxx	PAC-S300-SD25-V2-L11M	B.6
									7789231xxx	PAC-S300-SD37-V2-L11M	B.6
									7789232xxx	PAC-S300-SD25-V3-L11M	B.6
									7789234xxx	PAC-S300-HE20-V3-L11M	B.6
									7789235xxx	PAC-S300-HE10-V0-L11M	C.4
									7789236xxx	PAC-S300-HE20-V4-L11M	B.6
									7789237xxx	PAC-S300-HE20-V5-L11M	B.6
									7789239xxx	PAC-S300-HE20-V6-L11M	B.6
									7789246xxx	PAC-S300-HE20-V7-L11M	B.6
									7789247xxx	PAC-S300-HE20-V8-L11M	B.6
									7789250xxx	PAC-UNIV-SD15-F-L11M	C.31
									7789251xxx	PAC-UNIV-SD15-F-L11M	C.31
									7789252xxx	PAC-UNIV-SD25-F-L11M	C.31
									7789254xxx	PAC-UNIV-SD37-F-L11M	C.31
									7789257xxx	PAC-UNIV-SD15-V0-L11M	B.8
									7789259xxx	PAC-UNIV-SD25-V0-L11M	B.9
									7789261xxx	PAC-PREM-SD25-V0-L11M	B.7
									7789262xxx	PAC-UNIV-SD37-V0-L11M	C.31
									7789270xxx	PAC-S400-RV36-V0-L11M	B.7
									7789273xxx	PAC-S400-RV24-V0-L11M	B.7
									7789278xxx	PAC-S400-RV36-V2-L11M	B.7
									7789283xxx	PAC-S400-RV12-V0-L11M	B.7
									7789284xxx	PAC-S400-SD37-V0-L11M	B.7
									7789285xxx	PAC-S400-SD25-V0-L11M	B.7
									7789286xxx	PAC-S400-SD25-V1-L11M	B.7
									7789287xxx	PAC-S400-SD25-V2-L11M	B.7
									7789288xxx	PAC-S400-SD25-V3-L11M	B.7
									7789290xxx	PAC-S400-HE20-V0-L11M	B.7
									7789291xxx	PAC-S400-HE20-V1-L11M	B.7
									7789292xxx	PAC-S400-HE20-V2-L11M	B.7
									7789293xxx	PAC-S400-HE20-V3-L11M	B.7
									7789293xxx	PAC-STOP-HE20-V0-L11M	B.7
									7789301xxx	PAC-UNIV-HE20-1:1-L11M	B.11
									7789301xxx	PAC-UNIV-HE20-1:1-L11M	B.8
									7789301xxx	PAC-UNIV-HE20-1:1-L11M	C.31
									7789303xxx	PAC-MICR-HE10-V0-L11M	C.6
									7789306xxx	PAC-UNIV-HE20-LCH-L11M	C.31
									7789307xxx	PAC-MICR-RV12-V0-L11M	B.8
									7789308xxx	PAC-MICR-RV24-V0-L11M	B.8
									7789309xxx	PAC-MICR-SD15-V0-L11M	B.8
									7789310xxx	PAC-MICR-SD15-V1-L11M	B.8
									7789311xxx	PAC-MICR-SD25-V0-L11M	B.8
									7789312xxx	PAC-MICR-HE20-V0-L11M	B.8
									7789313xxx	PAC-MICR-HE20-V1-L11M	B.8
									7789314xxx	PAC-MICR-HE20-V2-L11M	B.8
									7789315xxx	PAC-PREM-RV24-V0-L11M	B.9
									7789316xxx	PAC-PREM-RV24-V1-L11M	B.9
911000			0224000000			4060000000					
911883	RD-50, Male w/accessory holes	A.10	0224261001	RS F20 LP2N 5/20	A.8	4060120000	RSS113024 24Vdc-Rel1U	C.25			
911884	RD-50JS, Male w/accessory holes	A.10	0224361001	RS F34 LP2N 5/34	A.8	4060120000	SSS Relais 24V/24V 2Acd	C.26			
911885	RD-50, Female w/accessory holes	A.10	0224461001	RS F40 LP2N 5/40	A.8	4060120000	RSS113024 24Vdc-Rel1U	C.34			
911886	RD-50JS, Female w/accessory holes	A.10	0224561001	RS F50 LP2N 5/50	A.8	4061180000	SSS Relais 24V/24V 0,1Acd	C.27			
911915	RJ 6A	A.15	0224761001	RS F64 LP2N 5/64	A.8	4061180000	SSS Relais 24V/24V 0,1Acd	C.34			
911916	RJ 8A	A.15	0224861001	RS F26 LP2N 5/26	A.8	4061190000	SSS Relais 24V/24V 2Acd	C.29			
			0224961001	RS F10 LP2N 5/10	A.8	4061190000	SSS Relais 24V/24V 2Acd	C.30			
						4061190000	SSS Relais 24V/24V 2Acd	C.34			
						4061200000	SSS Relais 24V/24V 2Acd	C.29			
						4061210000	SSS Relais 24V/230V 1Aac	C.28			
						4061210000	SSS Relais 24V/230V 1Aac	C.28			
						4061220000	SSS Relais 60V/230V 1Aac	C.28			
						4061230000	SSS Relais 60V/24V 0,1Acd	C.27			
						4061580000	RSS113005 05Vdc-Rel1U	C.25			
						4061590000	RSS112024 RELE 24VDC	C.34			
						4061610000	RSS113012 12Vdc-Rel1U	C.25			
						4061620000	RSS113048 48Vdc-Rel1U	C.25			
						4061630000	RSS113060 60Vdc-Rel1U	C.25			
						4061630000	RSS113060 60Vdc-Rel1U	C.26			
						4064310000	SSS Relais 5V/24V 2Acd	C.29			
						4064320000	SSS Relais 5V/24V 0,1ADC	C.27			
912000			0225000000								

Order No.	Type	Page
7789317xxx	PAC-PREM-RV12-V0-LLLM	B.9
7789318xxx	PAC-PREM-RV24-V2-LLLM	B.9
7789319xxx	PAC-PREM-SD25-V1-LLLM	B.9
7789320xxx	PAC-PREM-SD15-V0-LLLM	B.9
7789321xxx	PAC-PREM-SD15-V1-LLLM	B.9
7789322xxx	PAC-PREM-HE20-V0-LLLM	B.9
7789328xxx	PAC-TWDO-HE20-V0-LLLM	B.10
7789327xxx	PAC-TWDO-HE20-V1-LLLM	B.10
7789328xxx	PAC-TWDO-HE20-V2-LLLM	B.10
7789329xxx	PAC-TWDO-HE20-V3-LLLM	B.10
7789330xxx	PAC-MICR-RV36-V0-LLLM	B.8
7789331xxx	PAC-MICR-RV24-V1-LLLM	B.8
7789337xxx	PAC-CJ1W-HE20-V0-LLLM	B.18
7789370xxx	PAC-CJ1W-HE20-V0-LLLM	B.19
7789370xxx	PAC-CJ1W-HE20-V0-LLLM	B.20
7789371xxx	PAC-CJ1W-HE20-V1-LLLM	B.20
7789372xxx	PAC-CJ1W-HE20-V2-LLLM	B.18
7789372xxx	PAC-CJ1W-HE20-V2-LLLM	B.20
7789373xxx	PAC-CJ1W-HE20-V3-LLLM	B.20
7789380xxx	PAC-M340-HE20-V1-LLLM	B.12
7789382xxx	PAC-M340-RV24-V0-LLLM	B.12
7789383xxx	PAC-M340-RV24-V1-LLLM	B.12
7789384xxx	PAC-M340-RV24-V3-LLLM	B.12
7789386xxx	PAC-M340-HE20-V2-LLLM	B.12
7789387xxx	PAC-M340-HE20-V0-LLLM	B.12
7789388xxx	PAC-UNIV-HE20-LCF-LLLM	C.31
7789618xxx	PAC-RX3I-HE10-V0-LLLM	B.17
7789619xxx	PAC-RX3I-HE10-V1-LLLM	B.17
7789620xxx	PAC-RX3I-SD15-V0-LLLM	B.17
7789621xxx	PAC-RX3I-SD25-V2-LLLM	B.17
7789622xxx	PAC-RX3I-SD37-V0-LLLM	B.17
7789623xxx	PAC-RX3I-SD37-V1-LLLM	B.17
7789624xxx	PAC-RX3I-SD15-V1-LLLM	B.17
7789625xxx	PAC-RX3I-SD25-V0-LLLM	B.17
7789626xxx	PAC-RX3I-SD37-V2-LLLM	B.17
7789628xxx	PAC-M340-SD15-V3-LLLM	B.12
7789629xxx	PAC-M340-SD15-V4-LLLM	B.12
7789630xxx	PAC-M340-HE20-V3-LLLM	B.12
7789631xxx	PAC-RX3I-RV36-V0-LLLM	B.17
7789632xxx	PAC-RX3I-RV36-V1-LLLM	B.17
7789633xxx	PAC-M340-RV24-V2-LLLM	B.12
7789634xxx	PAC-RX3I-RV12-V0-LLLM	B.16
7789635xxx	PAC-M340-HERV-V0-LLLM	B.12
7789636xxx	PAC-RX3I-RV24-V2-LLLM	B.17
7789637xxx	PAC-M340-SD15-V0-LLLM	B.12
7789638xxx	PAC-M340-SD15-V1-LLLM	B.12
7789639xxx	PAC-M340-SD37-V0-LLLM	B.12
7789640xxx	PAC-M340-SD15-V2-LLLM	B.12
7789645xxx	PAC-CJ1W-HE20-V4-LLLM	B.20
7789646xxx	PAC-CQM1-HE20-V0-LLLM	B.18
7789647xxx	PAC-CQM1-HE20-V1-LLLM	B.18
7789648xxx	PAC-CJ1W-RV12-V0-LLLM	B.20
7789649xxx	PAC-CJ1W-RV24-V0-LLLM	B.20
7789650xxx	PAC-CJ1W-HE20-V5-LLLM	B.20
7789651xxx	PAC-CJ1W-HE20-V6-LLLM	B.20
7789652xxx	PAC-CQM1-RV12-V0-LLLM	B.18
7789653xxx	PAC-CQM1-RV24-V0-LLLM	B.18
7789654xxx	PAC-CQM1-RV24-V1-LLLM	B.18
7789655xxx	PAC-CQM1-HE20-V1-LLLM	B.18
7789656xxx	PAC-CQM1-RV12-V1-LLLM	B.18
7789664xxx	PAC-CJ1W-RV24-V1-LLLM	B.20
7789665xxx	PAC-RX3I-RV36-V2-LLLM	B.17
7789666xxx	PAC-RX3I-RV24-V0-LLLM	B.17
7789667xxx	PAC-RX3I-SD25-V1-LLLM	B.17
7789668xxx	PAC-RX3I-SD15-V2-LLLM	B.17
7789669xxx	PAC-RX3I-RV24-V1-LLLM	B.17
7789670xxx	PAC-SLCS-HE20-V6-LLLM	B.13

800000000

8003881001	RS SD37S UNC 4.40 LP2N	A.12
8003891001	RS SD37B UNC 4.40 LP2N	A.12
8003901001	RS SD9S UNC 4.40 LP2N	A.12
8003911001	RS SD9B UNC 4.40 LP2N	A.12
8005161001	RS SD50S UNC 4.40 LP2N	A.12
8005171001	RS SD50B UNC 4.40 LP2N	A.12
8005181001	RS SD25S UNC 4.40 LP2N	A.12
8005191001	RS SD25B UNC 4.40 LP2N	A.12
8005201001	RS SD15S UNC 4.40	A.12
8005211001	RS SD15B UNC 4.40 LP2N	A.12

801000000

8012850000	RS F10 LP3R 3/12	A.8
8012860000	RS F14 LP3R 3/14	A.8
8012870000	RS F16 LP3R 3/18	A.8
8012910000	RS F20 LP3R 3/21	A.8
8012920000	RS F26 LP3R 3/27	A.8
8012930000	RS F34 LP3R 3/36	A.8
8012940000	RS F40 LP3R 3/42	A.8
8012950000	RS F50 LP3R 3/51	A.8
8012960000	RS F60 LP3R 3/63	A.8
8012970000	RS F64 LP3R 3/66	A.8
8019880000	RS SD9B LP3R	A.12
8019890000	RS SD15B LP3R	A.12
8019900000	RS SD25B LP3R	A.12
8019910000	RS SD37B LP3R	A.12
8019920000	RS SD50B LP3R	A.12
8019930000	RS SD9S LP3R	A.12

Order No.	Type	Page
8019940000	RS SD15S LP3R	A.12
8019950000	RS SD25S LP3R	A.12
8019960000	RS SD37S LP3R	A.12
8019970000	RS SD50S LP3R	A.12

815000000

8155550000	RS F64 LPK 2H/66	A.6
8155570000	RS F50 LPK 2H/52	A.6
8155580000	RS F40 LPK 2H/42	A.6
8155590000	RS F34 LPK 2H/36	A.6
8155600000	RS F20 LPK 2H/22	A.6
8155610000	RS F10 LPK 2H/12	A.6
8155620000	RS SD25B UNC LPK2	A.11
8155630000	RS SD37B UNC LPK2	A.11
8155650000	RS SD25S UNC LPK2	A.11
8155660000	RS SD37S UNC LPK2	A.11
8155670000	RS SD50S UNC LPK2	A.11

819000000

8199510000	RS LPK3/144 VERT	A.14
------------	------------------	------

820000000

8209730000	RS SD15B UNC LPK2	A.11
------------	-------------------	------

821000000

8213470000	RS F26 LPK 2H/28	A.6
8216350000	FBK 40/100 RK	C.33
8216360000	FBK 40/150 RK	C.33
8216370000	FBK 40/200 RK	C.33
8216380000	FBK 40/250 RK	C.33
8216390000	FBK 40/300 RK	C.33
8216400000	FBK 40/350 RK	C.33
8216410000	FBK 40/400 RK	C.33
8216480000	RS SD9B UNC LPK2	A.11

822000000

8224181001	RS F40 16RS OUT 24VDC	C.17
8224191001	RS F40 16RS OUT 24VDC E	C.17
8224260000	RS F10 I/O8 LD LPK2	C.13
8224290000	RS F10 I/O8 LPK2	C.13

823000000

8233350000	RS SD15S UNC LPK2	A.11
8234620000	RS VERT16 LPK2	A.13
8235350000	FBK 40/500 RK	C.33
8235360000	FBK 10/100 RK	C.33
8235380000	FBK 10/200 RK	C.33
8235410000	FBK 10/350 RK	C.33
8235420000	FBK 10/400 RK	C.33
8235440000	FBK 10/500 RK	C.33

824000000

8248050000	RS F10 LPK 2H/12	C.12
8248050000	RS F10 LPK 2H/12	C.4
8248050000	RS F10 LPK 2H/12	C.5
8248050000	RS F10 LPK 2H/12	C.6
8248060000	RS F40 LPK 2H/42	C.12

825000000

8252010000	RS VERT8 LPK2	A.13
8258980000	RS F14 LPK 2H/16	A.6
8259000000	RS F60 LPK 2H/62	A.6
8259010000	RS SD9S UNC LPK2	A.11

826000000

8265540000	RS F16 LPK 2H/18	A.6
------------	------------------	-----

832000000

8329800000	RS F10 8R OUT 24VDC	C.18
------------	---------------------	------

833000000

8335900200	SIM S7/400 FB40 2.0M	C.9
8335900250	SIM S7/400 FB40 2.5M	C.9
8335900300	SIM S7/400 FB40 3.0M	C.9
8335900500	SIM S7/400 FB40 5.0M	C.9
8335910200	SIM S7/400 FB4*10 2.5M	C.9
8335910300	SIM S7/400 FB4*10 3.0M	C.9
8335910500	SIM S7/400 FB4*10 5.0M	C.9
8335910xxx	SIM S7/400 FB4*10 LM	C.9

842000000

8428870000	RS F10 I/O8 LMZF	C.11
8428870000	RS F10 I/O8 LMZF	C.4
8428870000	RS F10 I/O8 LMZF	C.5
8428870000	RS F10 I/O8 LMZF	C.6
8428880000	RS F40 I/O32 LMZF	C.11
8428890000	RS F10 INIT8 LD LMZF	C.14
8428900000	RS F40 INIT32 LD LMZF	C.15

843000000

8430980000	RS F40 INIT32 LMZF	C.15
8430990000	RS F10 8RS OUT LMZF	C.19
8431000000	RS F40 32RS OUT LMZF	C.20
8433290200	SIM S7/300 FB40 2.0M	C.8
8433290250	SIM S7/300 FB40 2.5M	C.8
8433290300	SIM S7/300 FB40 3.0M	C.8
8433290500	SIM S7/300 FB40 5.0M	C.8
8433310200	SIM S7/300 FB4*10 2.0M	C.8
8433310250	SIM S7/300 FB4*10 2.5M	C.8
8433310300	SIM S7/300 FB4*10 3.0M	C.8
8433310500	SIM S7/300 FB4*10 5.0M	C.8
8433310xxx	SIM S7/300 FB4*10 LM	C.4

853000000

8533640000	MRS 24Vdc 1C0	C.25
8533640000	MRS 24Vdc 1C0	C.4
8533640000	MRS 24Vdc 1C0	C.5
8533640000	MRS 24Vdc 1C0	C.6
8533660000	MRZ 24VDC 1C0	C.25
8533660000	MRZ 24VDC 1C0	C.4
8533660000	MRZ 24VDC 1C0	C.5
8533660000	MRZ 24VDC 1C0	C.6
8537110000	RS F20 Z	A.6
8537130000	RS F34 Z	A.6
8537140000	RS F40 Z	A.6
8537150000	RS F50 Z	A.6
8537180000	RS F26 Z	A.6
8537190000	RS F10 Z	A.6
8537200000	RS F14 Z	A.6
8537240000	RS SD37 SZ	A.11
8537250000	RS SD37 BZ	A.11
8537260000	RS SD9 SZ	A.11
8537320000	RS SD9 BZ	A.11
8537350000	RS SD50 SZ	A.11
8537370000	RS SD25 SZ	A.11
8537380000	RS SD25 BZ	A.11
8537390000	RS SD15 SZ	A.11
8537400000	RS SD15 BZ	A.11

855000000

8555440000	RS RJ45 2WAY	A.15
8556020000	MRS 230Vac 1C0	C.25
8556030000	MRS 120Vac 1C0	C.25
8556040000	MRS 48Vac 1C0	C.25
8556050000	MRS 24Vdc 1C0	C.25
8556060000	MRS 60Vdc 1C0	C.4
8556060000	MRS 60Vdc 1C0	C.5
8556070000	MRS 12Vdc 1C0	C.25
8556080000	MRS 5Vdc 1C0	C.25
8556080000	MRS 5Vdc 1C0	C.4
8556080000	MRS 5Vdc 1C0	C.5
8556090000	MRZ 230Vac 1C0	C.25
8556100000	MRZ 120Vac 1C0	C.25
8556110000	MRZ 48Vac 1C0	C.25
8556120000	MRZ 24Vdc 1C0	C.25
8556130000	MRZ 60Vdc 1C0	C.25
8556140000	MRZ 12Vdc 1C0	C.25
8556150000	MRZ 5Vdc 1C0	C.25

857000000

8576340000	SSR 24V ACDC/24 VDC 2A	C.34
8576370000	SSR 24V ACDC/230VAC 2A	C.34

859000000

8596060000	MRS 24Vdc 1C0 5uAu	C.6
8596080000	MRZ 24Vdc 1C0 5uAu	C.6

860000000

8607340000	MOS 24Vdc / 24Vdc 0,1A	C.27
8607340000	MOS 24Vdc / 24Vdc 0,1A	C.4
8607340000	MOS 24Vdc / 24Vdc 0,1A	C.5
8607340000	MOS 24Vdc / 24Vdc 0,1A	C.6
8607350000	MOS 24Vdc / 24Vdc 2A	C.29
8607350000	MOS 24Vdc / 24Vdc 2A	C.4
8607350000	MOS 24Vdc / 24Vdc 2A	C.5
8607350000	MOS 24Vdc / 24Vdc 2A	C.6

Order No.	Type	Page
8607360000	MOZ 24Vdc / 24Vdc 0,1A	C.27
8607360000	MOZ 24Vdc / 24Vdc 0,1A	C.4
8607360000	MOZ 24Vdc / 24Vdc 0,1A	C.5
8607360000	MOZ 24Vdc / 24Vdc 0,1A	C.6
8607370000	MOZ 24Vdc / 24Vdc 2A	C.29
8607370000	MOZ 24Vdc / 24Vdc 2A	C.4
8607370000	MOZ 24Vdc / 24Vdc 2A	C.5
8607370000	MOZ 24Vdc / 24Vdc 2A	C.6
8607370000	MOZ 24Vdc / 24Vdc 2A	C.6
8607370000		

Order No.	Type	Page	Order No.	Type	Page
944000000					
9441500000	RS16E RSV1,6/V	B.21	9447710000	RS16ES-L H/Z	B.21
9441500000	RS16E RSV1,6/V	B.27	9447710000	RS16ES-L H/Z	B.24
9441510000	RS32 ES RSV 1,6V	B.21	9447730000	RS16ES-D-L H/Z	B.21
9441510000	RS32 ES RSV 1,6V	B.36	9447730000	RS16ES-D-L H/Z	B.25
9441540000	RS8ES-DP RSV 1,6/V	B.21	9447750000	RS16ES-D-I-L H/Z	B.21
9441540000	RS8ES-DP RSV 1,6/V	B.22	9447750000	RS16ES-D-I-L H/Z	B.25
9441560000	RS16ES-DP/F RSV1,6/V	B.21	9447770000	RS16ES-T-L H/Z	B.21
9441560000	RS16ES-DP/F RSV1,6/V	B.28	9447770000	RS16ES-T-L H/Z	B.26
9441570000	RS32ES-DP/F RSV1,6/V	B.21	9447900000	RS32ES H/Z	B.21
9441570000	RS32ES-DP/F RSV1,6/V	B.37	9447900000	RS32ES H/Z	B.30
9441600000	RS16ES-3E/I RSV 1,6/V	B.21	9447910000	RS32ES-L H/Z	B.21
9441600000	RS16ES-3E/I RSV 1,6/V	B.29	9447910000	RS32ES-L H/Z	B.30
9441610000	RS32ES-3E/I RSV 1,6/V	B.21	9447930000	RS32ES-D-L H/Z	B.21
9441610000	RS32ES-3E/I RSV 1,6/V	B.38	9447930000	RS32ES-D-L H/Z	B.32
9441700000	RS16es-DP RSV1,6/V	B.21	9447950000	RS32ES-D-I-L H/Z	B.21
9441700000	RS16es-DP RSV1,6/V	B.28	9447950000	RS32ES-D-I-L H/Z	B.33
9441710000	RS32ES-DP RSV1,6/V	B.21	9447970000	RS32ES-T-L H/Z	B.21
9441710000	RS32ES-DP RSV1,6/V	B.37	9447970000	RS32ES-T-L H/Z	B.35
9441860000	RS16ES-I RSV1,6/V	B.21	9448000000	RS4ESA-DP SD/V	B.54
9441860000	RS16ES-I RSV1,6/V	B.27	9448000000	RS4ESA-DP SD/V	B.55
9441870000	RS32ES-I RSV1,6/V	B.21	9448010000	RS8ESA-DP SD/V	B.54
9441870000	RS32ES-I RSV1,6/V	B.36	9448010000	RS8ESA-DP SD/V	B.56
9444610000	RSM 16-NV/1RT 24V(+/-)	B.42	9448020000	RS16ESA-DP SD/V	B.54
9444610000	RSM 16-NV/1RT 24V(+/-)	B.45	9448020000	RS16ESA-DP SD/V	B.58
9444660000	RSM16-NZ/1RT 24V (-/+)	B.42	9448030000	RS8EA PREM/APR SD/V	B.54
9444660000	RSM16-NZ/1RT 24V (-/+)	B.45	9448030000	RS8EA PREM/APR SD/V	B.57
9445000000	RSM8C-1RT H/V	B.42	9448040000	RS8E1SA MICRO SD/V	B.54
9445000000	RSM8C-1RT H/V	B.43	9448040000	RS8E1SA MICRO SD/V	B.57
9445060000	RSM12C-1RT H/V	B.42	9448100000	RS4ESA/I-M-DP SD/V	B.54
9445060000	RSM12C-1RT H/V	B.44	9448100000	RS4ESA/I-M-DP SD/V	B.55
9445100000	RSM 16C-1RT H/V	B.42	9448110000	RS8ESA/I-M-DP SD/V	B.54
9445100000	RSM 16C-1RT H/V	B.46	9448110000	RS8ESA/I-M-DP SD/V	B.56
9445120000	RSM16-1RT-Fu H/V	B.42	9448120000	RS16ESA/I-M-DP SD/V	B.54
9445120000	RSM16-1RT-Fu H/V	B.50	9448120000	RS16ESA/I-M-DP SD/V	B.58
9445140000	RSM16-1RT-Fo H/V	B.42	9449110000	RS8ESA/I-M-DP SD/Z	B.54
9445140000	RSM16-1RT-Fo H/V	B.49	9449110000	RS8ESA/I-M-DP SD/Z	B.56
9445160000	RSM16-2RT H/V	B.42	9449120000	RS16AIO/I-M-DP SD/Z	B.54
9445160000	RSM16-2RT H/V	B.48	9449120000	RS16AIO/I-M-DP SD/Z	B.58
9445180000	RSM16 1T/CDE-EV 24V-H/V	B.42			
9445180000	RSM16 1T/CDE-EV 24V-H/V	B.51			
9445220000	RSM32-1RT-Fu H/V	B.42			
9445220000	RSM32-1RT-Fu H/V	B.53			
9445530000	RS8ES-D-L H/V	B.21			
9445530000	RS8ES-D-L H/V	B.22			
9445630000	RS12ES-D-L H/V	B.21			
9445630000	RS12ES-D-L H/V	B.23			
9445700000	RS16ES H/V	B.21			
9445700000	RS16ES H/V	B.24			
9445710000	RS16ES-L H/V	B.21			
9445710000	RS16ES-L H/V	B.24			
9445720000	RS16ES-D H/V	B.21			
9445720000	RS16ES-D H/V	B.25			
9445730000	RS16ES-D-L H/V	B.21			
9445730000	RS16ES-D-L H/V	B.25			
9445750000	RS16ES-D-I-L H/V	B.21			
9445750000	RS16ES-D-I-L H/V	B.25			
9445760000	RS16ES-T H/V	B.21			
9445760000	RS16ES-T H/V	B.26			
9445770000	RS16ES-TL H/V	B.21			
9445770000	RS16ES-TL H/V	B.26			
9445810000	RS16ES-S-I-L H/V	B.21			
9445810000	RS16ES-S-I-L H/V	B.24			
9445820000	RS16ES-D-F H/V	B.21			
9445820000	RS16ES-D-F H/V	B.26			
9445870000	RS32ES-S-I-L H/V	B.21			
9445870000	RS32ES-S-I-L H/V	B.31			
9445900000	RS32ES H/V	B.21			
9445900000	RS32ES H/V	B.30			
9445910000	RS32ES-L H/V	B.21			
9445910000	RS32ES-L H/V	B.30			
9445930000	RS32ES-D-L H/V	B.21			
9445930000	RS32ES-D-L H/V	B.32			
9445950000	RS32ES-D-I-L H/V	B.21			
9445950000	RS32ES-D-I-L H/V	B.33			
9445960000	RS32ES-T H/V	B.21			
9445960000	RS32ES-T H/V	B.35			
9445970000	RS32ES-TL H/V	B.21			
9445970000	RS32ES-TL H/V	B.35			
9445980000	RS32ES-D-F H/V	B.21			
9445980000	RS32ES-D-F H/V	B.34			
9446900000	RS16EC-O-D 24-48V H/V	B.39			
9446900000	RS16EC-O-D 24-48V H/V	B.40			
9446910000	RS16EC-O-D 115Vac H/V	B.39			
9446910000	RS16EC-O-D 115Vac H/V	B.41			
9446920000	RS16EC-O-D 230Vac H/V	B.39			
9446920000	RS16EC-O-D 230Vac H/V	B.41			
9447000000	RSM8C-1RT H/Z	B.42			
9447000000	RSM8C-1RT H/Z	B.43			
9447100000	RSM16C-1RT H/Z	B.42			
9447100000	RSM16C-1RT H/Z	B.46			
9447120000	RSM16-1RT-Fu H/Z	B.42			
9447120000	RSM16-1RT-Fu H/Z	B.50			
9447160000	RSM16C-2RT H/Z	B.42			
9447160000	RSM16C-2RT H/Z	B.48			
9447200000	RSM32C-1RT H/Z	B.42			
9447200000	RSM32C-1RT H/Z	B.52			
9447700000	RS16ES H/Z	B.21			
9447700000	RS16ES H/Z	B.24			

Addresses worldwide

- AE United Arab Emirates**
Weidmüller Middle East FZE
P.O. Box # 8591
SAIF-Zone
Sharjah – VAE
Phone +971 6 5572723
Fax +971 6 5672724
wme.info@weidmueller.com
- AR Argentina**
CPI SA
Bauness 2660
1431 Buenos Aires
Phone +54 11 45238008
compras@cpi.com.ar
- AT Austria**
Weidmüller Ges.m.b.H.
Industriezentrum Nö Süd
Straße 2, Objekt M2
2355 Wiener Neudorf
Phone +43 2236 6708-0
Fax +43 2236 6708-199
office.at@weidmueller.com
- AU Australia**
Weidmüller Pty. Ltd.
43 Huntingwood Drive
Huntingwood,
NSW, 2148
P.O.Box 6944
Blacktown
NSW, 2148
Phone +61 2 9671-9999
Fax +61 2 9671-9911
info@weidmuller.com.au
www.weidmuller.com.au
- AZ Azerbaijan**
West Industries Ltd.
Caspian Plaza, 5-th Floor
44 J. Jabbarly Str., Baku
Phone +99412 499 15 15
Fax +99412 499 14 93
sales@west-1.com
- BA Bosnia and Herzegovina**
BH ES Elektrosistem d.o.o.
ul. J. Veselinovica 18
78000 Banja Luka
Phone +387 51 317500
Fax +387 51 317500
elsist@inecco.net
www.elektrosistem.co.yu
- BE Belgium**
Weidmüller Benelux B.V.
Mechelsesteenweg 519 bus 6 en 7
1930 Nossegem
Phone +32 (0)2 752 40 70
Fax +32 (0)2 751 36 06
info@weidmueller.be
- BG Bulgaria**
Weid-Bul EOOD
1113 Sofia
33 A 'Nezabravka' Str.
bl. 315/3/10
Phone +359 2 9632560
weidbul@nat.bg
www.weidbul.com
- BH Bahrain**
Khayber Trading Company
P.O. Box 1976 Manama,
Phone +973 17720747
Fax +973 17720331
khayber@batelco.com.bh
- BR Brazil**
Conexel Conexoes Elétricas Ltda.
Rua Garcia Lorca, 176- V. Paulicéia,
09695-900, Sao Bernardo do
Campo - SP
Phone +55 11 43669600
Fax +55 11 43621677
vendas@conexel.com.br
www.conexel.com.br
- BY Belarus**
Technikon Ltd.
Oktyabrskaya Str. 16/5
Apt. 704, 220030, Minsk
Phone +375 17 2104626
Fax +375 17 2275830
weidmueller@technikon.by
- CA Canada**
W Interconnections Canada Inc.
10 Spy Court, Markham,
Ontario L3 R5 H6
Phone +1 905 475-1507
Fax +1 905 475-5855
info1@weidmuller.ca
www.weidmuller.ca
- CH Switzerland**
Weidmüller Schweiz AG
Rundbuckstrasse 2
8212 Neuhausen am Rheinfall
Phone +41 52 6740707
Fax +41 52 6740708
info@weidmueller.ch
www.weidmueller.ch
- CL Chile**
Felipe Bahamondes S.A./ATS AGRO
Servicios Agroindustriales
Maria Luisa Santander 0475
Providencia
Casilla 3425
Santiago
Phone +56 2 341-1271
Fax +56 2 341-1275
felipe@atsintech.com
- CN China**
Weidmüller Interface International
Trading (Shanghai) Co., Ltd.
12 F, Century Ba-Shi Building,
No. 398 Huaihai Road (N)
Shanghai 200020
P.R. China
Phone +86 21 63868188
Fax +86 21 63867177
www.cnweidmuller.com
- CO Colombia**
Automatizacion Avanzada S. A.
Cr 97 # 24C-23 Bodega 4 Bogotá
Phone +57 1 5478510
Fax +57 1 4132285
productos@
automatizacionavanzada.com
- CR Costa Rica**
ELVATRON S.A.
400 Norte
Banco Costa Rica, la Uruca,
San José
Phone +506 2 961060
Fax +506 2 960328
dirk.haase@elvatron.com
- CS Serbia**
ES-YU Elektrosistem
Pariske komune 41
11070 Novi Beograd
Phone +381 11 697212
Fax +381 11 693608
esyu@eunet.yu
www.elektrosistem.co.yu
- CZ Czech**
Weidmüller s. r. o.
Videnska ul. 340
25242 Vestec u Prahy
Phone +420 2 44001400
Fax +420 2 44001499
office@weidmueller.cz
- DE Germany**
Weidmüller GmbH & Co. KG
Ohmstraße 9
32758 Detmold
Phone +49 5231 1428-0
Fax +49 5231 1428-116
weidmueller@weidmueller.de
www.weidmueller.de
- DK Denmark**
Knud Wexøe A/S
Skaettekaeret 11
P.O. Box 152
2840 Holte
Phone +45 45465800
Fax +45 45465801
wexoe@wexoe.dk
- EC Ecuador**
Elsystec S.A.
Vasco de Contreras N35-261
y Mañosa
Phone +593 2 2455698
Fax +593 2 2245241
info@elsystec.com.ec
elsystec@elsystec.com.ec
- EE Estonia**
Alter Electric OÜ
Gaasi 4A
11415 Tallinn
Phone +372 6519666
Fax +372 6519667
alter@alter.ee
www.alter.ee
- EG Egypt**
Standard Electric
87, Mohamed Farid Street
Heliopolis, Cairo
Phone +20 6 42 29 77/ 6 42 29 88
Fax +20 6 42 29 55
stdelec@rite.com
- ES Spain**
Weidmüller S. A.
Narcis Monturiol 11-13
Pol.Ind. Sudoeste
08960 Sant Just Desvern
Barcelona
Phone +34 93 4803386
Fax +34 93 3718055
weidmuller@weidmuller.es
www.weidmuller.es
- FI Finland**
JUHA-ELEKTRO OY
Kylvöpolku 6, P. O. Box 57
00681 Helsinki
Phone +358 10 8328 100
Fax +358 10 8328 169
- FR France**
Weidmüller EURL
12, Chaussée Jules César
B.P. 263 Osny
95523 CERGY PONTOISE Cedex
Phone +33 1 34245500
Fax +33 1 34245501
mail@weidmuller.fr
www.weidmuller.fr
- GB Great Britain**
Weidmüller Ltd.
1 Abbey Wood Road
Kings Hill, West Malling
Kent ME19 4YT
Phone +44 845 094 2006
Fax +44 1732 874295
sales@weidmuller.co.uk
www.weidmuller.co.uk
- GR Greece**
Electrorama S.A.
Phone +30 2410 552533
Fax +30 2410 283463
weidmuller@electrorama.com.gr
- HK Hong Kong**
United Equity Limited
Suite B, 11/F International Industrial
Centre
2-8 Kwei Tei Street, Fotan, Shatin
Phone +852 26876739
Fax +852 26876735
united_equity@sinatown.com
- HR Croatia**
Elektro Partner d.o.o.
Radnicka cesta 22
10000 Zagreb
Phone +385 1 6184793
Fax +385 1 6184795
elektropartner@zg.htnet.hr
- HU Hungary**
Weidmüller Kereskedelmi Kft
Mádi u. 50
1104 Budapest
P. O. Box 22
1507 Budapest
Phone +36 1 464-7888
Fax +36 1 3827701
info@weidmueller.hu
- ID Indonesia**
PT. NEGO ELECTRINDO
Ruko Mega Grosir Cempaka Mas,
Blok 1 No 20 – 22
Jl. Let.Jend. Suprato –
JAKARTA 10640
Phone +62 21 42882255
Fax +62 21 42882266
sales@negoelectrindo.co.id
- IE Ireland**
A.P. Haslam Ltd.
14 Sunshine Ind. Estate
Crumlin Road
Dublin 12
Phone +353 1 453-2522
Fax +353 1 453-2949
paul.haslam@aphaslam.ie
- IL Israel**
A.U.Shay Ltd.
23 Imber St. Petach-Tikva
Phone +972 3 9233601
Fax +972 3 9234601
shay@uriel-shay.com
www.uriel-shay.com
- IL Israel**
ATEKA Ltd.
23 Hayetzira St.
Kiryat Aryeh
49130 Petach-Tikva, Israel
Phone +972 3 9392344
Fax +972 3 9243273
marketing@ateka.co.il
www.ateka.co.il
- IN India**
Weidmüller
Representative office
Vijay Dattani
Mobile +91 98440 97366
vcdattani@eth.net
- IR Iran**
TAF Co.
72, Iranshahr Av.
Unit 5,
15816 Teheran
Phone +98 21 8831-7851
Fax +98 21 8882-0268
info@taf-co.com
- IS Iceland**
Samey Automation Center
Lyngas 13, 210 Garoabaer,
Phone +354 510 5200
Fax +354 510 5201
samey@samey.is
- IT Italy**
Weidmüller S.r.l.
Via Albert Einstein 4
20092 Cinisello Balsamo
Milano
Phone +39 02 660681
Fax +39 02 6124945
weidmuller@weidmuller.it
www.weidmuller.it
- JO Jordan**
Trans Jordan for Electro
Mechanic Supplies PLC.
P.O.Box: 330607
Amman 11133
Phone +962 6 533 2020
Fax +962 6 533 5800
transjordan@batelco.jo
- JP Japan**
Nihon Weidmüller Co. Ltd.
Asahi Seimei Bldg. 11F
1-14-1 Fuchicho Fuchu-shi
Tokyo 183-0055
Phone +81 42 330-7891
Fax +81 42 330-7895
www.weidmuller.co.jp
- KR Korea**
Weidmüller Co., Ltd.
6th floor, Sukyoung building, 242-54
Nonhyun-dong, Kangnam-Gu
Seoul
Zip: 135-830
Phone +82 2 5160003
Fax +82 2 5160090
info@weidmuller.co.kr

- KW Kuwait**
KANA CONTROLS General Trading & Cont. CO. W.L.L.
A1 Rai Industrial Area,
Plot 28-30, St. 31
P.O.Box: 25593
Safat, 13116 Kuwait
Phone +965-474 1373/4
Fax +965-474 1537
info@kanacontrols.com
- KZ Kazakhstan**
Please contact our Weidmüller branch office in Moscow, Russia
- LB Lebanon**
PROGRESS ENGINEERING
Beirut
Phone +961 1 444664
Fax +961 1 561880
progress@inco.com.lb
- LT Lithuania**
ELEKTROS IRANGA
Tinklu g.29a, 5319 Panevezys,
Phone +370 45582828
Fax +370 45582727
info@eliranga.lt
- LU Luxembourg**
Weidmüller Benelux B.V.
Phone +352 24 527145
Fax +352 24 527147
info@weidmuller.lu
- LV Latvia**
Alter Electric OÜ
Gaasi 4A
11415 Tallinn
Phone +372 6519666
Fax +372 6519667
alter@alter.ee
www.alter.ee
- MD Moldova**
BERHORD A&D srl
Off 414, b-dul Decebal, 3,
Chisinau, RM
Phone +373 22 507137
Fax +373 22 507134
atiuleanu@berhord.com
- MK Macedonia**
ELEKTRO – SMK doool
UL. III Makedonska brigada b.b.
1000 Skopje
Phone +389 22 460 295
Fax +389 22 460 298
Elektro-smk@telekabel.net.mk
- MT Malta**
Electrical Supplies & Services Ltd
104 J. Soberras Str.
Hamrun HMR 08
Phone +356 21 255 777
Fax +356 21 255 999
robert@ess.com.mt
- MX Mexico**
W Interconnections, S.A. de C.V.
Blvd. Hermanos Serdán No. 698
Col. San Rafael Oriente
Puebla, Pue. C.P. 72029
Phone +52 222 2686266 to 68 ext.101
Fax +52 222 2686219
clientes@weidmuller.com.mx
www.weidmuller.com.mx
- MY Malaysia**
Connect Plus Technology Sdn Bhd
No. 43, Jalan PJS 11/22,
Bandar Sunway, 46150 Petaling Jaya
Selangor Darul Ehsan
Phone +60 3 5633 7363
Fax +60 3-5633 6562
paul@cptech.com.my
www.cptech.com.my
- NL Netherlands**
Weidmüller Benelux B.V.
Franciscusweg 221
1216 SE Hilversum
Postbus 1505
1200 BM Hilversum
Phone +31 35 6261261
Fax +31 35 6234569
info@weidmuller.nl
www.weidmuller.nl
- NO Norway**
Siv. Ing. J. F. Knudtzen A/S
Billingsstadsletta 97
1396 Billingstad, P.O. Box 160
1378 Nesbru
Phone +47 66 983350
Fax +47 66 980955
patorgersbraaten@jfknudtzen.no
- NZ New Zealand**
Cuthbert S. Steward Limited
27 Te Puni Street
POB 38496 Petone
Petone, Wellington
Phone +64 4 5686156
Fax +64 4 5686056
- OM Oman**
DAN INTERNATIONAL LLC.
PO.BOX 2901
111 Seeb
Phone +968 503 677
Fax +968 503 755
yedu@danintl.com
- PE Peru**
TECSOL S.A.C.
Huandoy N° : 501, Lima 32
Phone / Fax +51 1 562-0004
info@tecsol-peru.com
- PH Philippines**
Enclosure Systems Specialists Inc
NW-15 La Fuerza Compound
2241 Don Chino Roces Avenue
Makati City 1231 Philippines
Phone +63 2 813 8580
sales_encsys@pltdstl.net
- PK Pakistan**
Kana Controls (Pak)
Apartment No. 33 C III
Chenab Block,
Allama Iqbal Town
Lahore
Phone +92 42 5419948
+92 42 7845160
Fax +92 42 5422895
nadeem@kanapak.com
www.kanapak.com
- PL Poland**
Weidmüller Sp. z o.o.
ul. Goleździnowska 10
03-302 Warszawa, Poland
Phone +48 22 5100940
Fax +48 22 5100941
biuro@weidmuller.com.pl
www.weidmuller.pl
- PT Portugal**
Weidmüller - Sistemas de Interface, S. A.
Estrada Outeiro Polima, Lote B,
N° B2, Escritório 2 - Abóboda
2785-518 Sao Domingos de Rana
Lisboa
Phone +351 21 4459190
Fax +351 21 4455871
weidmuller@weidmuller.pt
www.weidmuller.pt
- QA Qatar**
Doha Motors (Technical Division)
Post Box No. 145
Al Wakrath Road
Doha
Phone +974 465 1441
Fax +974 465 4579
dmtctech@qatar.net.qa
- RO Romania**
Rominterface Impex SRL
Phone +40 21 3220230
office@rominterface.ro
- RU Russia**
Weidmüller Representative Office
Shabolovka street 2
119049 Moscow, Russia
Phone +7 095 771-6940
Fax +7 095 771-6941
info@weidmueller.ru
www.weidmueller.ru
- SA Saudi Arabia**
Al Abdulkarim Holding Co.
P.O. Box. 4
Dammam 31411
Phone +9668337110 Ext.168
salehsk@akh.com.sa
- SESCO P.O. Box 3298
Al Khobar 31952
Phone +966 3 882 9546
Fax +966 3 882 9547
Customer.Service@sesco-gex.com
www.sesco-gex.com
- SE Sweden**
Weidmüller AB
Axel Danielssons väg 271
P.O. box 31025
200 49 Malmö
Phone +46 (0) 7 71 43 00 44
Fax +46 (0) 40 37 48 60
www.weidmuller.se
info@weidmuller.se
- SG Singapore**
Weidmüller Pte Ltd
70 Bendemeer Road
#04-03 Luzerne
Singapore 339940
Phone +65 6841 5311
Fax +65 6841 5377
info@weidmuller.com.sg
www.weidmuller.com.sg
- SI Slovenia**
Elektrospoji d.o.o.
Stegne 27, 1000 Ljubljana
Phone +386 15113810
Fax +386 15111604
elektrospoji@siol.net
www.elektrospoji.si
- SK Slovakia**
Elektris s.r.o.
Racianska 188
SK 831 53 Bratislava
Phone +421 2 4920 0111
bratislava@elektris.sk
- TH Thailand**
Pisanu Engineering Co., Ltd
800/2 Asoke Dindaeng Road,
Dindaeng, Bangkok 10400
Phone +66 2 245 9113
Fax +66 2 2463214
pisanu@kanit.co.th
www.pisanu.co.th
- TN Tunisia**
FAZE Services
Rue du Lac Turkana –
Immeuble Nour El Bouhaira
1053 Les Berges du Lac – Tunis
Tunisia
Phone +216 71 964-266
Fax +216 71 964-265
contact.fazeservices@faze.com.tn
www.groupefaze.com
- TR Turkey**
Weidmüller Elektronik Ticaret Ltd.Şti.
Kavacık Mah. Mhırabad Cad. 143/1
34810 Beykoz – Istanbul / Turkey
Phone +90 216 5371070 (Pbx)
Fax +90 216 5371077
info@weidmuller.com.tr
- TW Taiwan**
Fittatek Co., Ltd.
12F No. 185 Fu-Kuo Road,
Tso Ying Dist
Kaohsiung
Phone +886 7 556 0858
Fax +886 7 556 3279
stanley@fittatek.com.tw
- TW Taiwan**
Eucan Enterprise Ltd.
No. 145 He Ping 2nd Rd
Kaohsiung
Phone +886 7 715 6610
Fax +886 7 715 8748
mark@eucan.com.tw
www.eucan.com.tw
- UA Ukraine**
TEKO INTERFACE ooo
ul. Lewanewskogo 6
03058 Kiev
Phone +38 044 401 09 90/91/92
Fax +38 044 401 08 64
weidmueller@tekointerface.com
www.tekointerface.com.ua
- US United States**
W-Interconnections, Inc.
821 Southlake Boulevard,
Richmond, VA 23236
Phone +1 804 7942877
Fax +1 804 3792593
info@weidmuller.com
www.weidmuller.com
- UY Uruguay**
Rewo Uruguay S.A
Av. Bolivia 2001 esq Rocafuerte
Phone / Fax +598 260 48522
rewo@rewo Uruguay.com.uy
www.rewo Uruguay.com.uy
- UZ Uzbekistan**
OOO "Elektro Potential"
Gani Mavijanovna str., 2B
100084 Tashkent
Phone +998 98-3003821
Fax +998 71-1249286
mz1958@yandex.ru
- VE Venezuela**
Somercina C.A.
3era transversal de Los Dos caminos,
Ota Corazon de Jesús. 4ta de
Montecristo. Caracas
Phone +58 212 2352748
Fax +58 212 2399341
kiocmoeller@cantv.net
- VN Viet Nam**
AUMI Co., Ltd
E1, La Thanh Hotel,
218 Doi Can Street,
Lieu Giai Ward, Ba Dinh District,
Hanoi City, S.R.
Phone +84 4762 8601
Fax +84 4266 1391
aumi@aumi.com.vn
- Linh Kim Hai Co., Ltd
78 Hoa Cuc Street Ward 7,
Phu Bhuan District,
Ho Chi Minh City
Phone +84 8517 1717
Fax +84 8517 1818
lkh@linhkimhai.com.vn
- New Sky Co.,
Ltd44/28 Tan Hai Street,
Ward 13, Tan Binh District,
Ho Chi Minh City
Phone +84 8812 6593
Fax +84 8812 6594
newsky-e@hcm.vnn.vn
www.newsky-e.com
- ZA South Africa**
Phambili Interface (Pty) Ltd
Phone +27 11 452 1930
Fax +27 11 452 6455
sales@weidmuller.co.za
www.weidmuller.co.za
- DE Other countries**
Weidmüller Interface GmbH & Co. KG
Postfach 3030
32720 Detmold
Klingenbergstraße 16
32758 Detmold
Phone +49 5231 14-0
Fax +49 5231 14-20 83
info@weidmueller.com
www.weidmueller.com

We cannot guarantee that there are no mistakes in the publications or software provided by us to the customer for the purpose of making orders. We try our best to quickly correct errors in our printed media.

All orders are based on our general terms of delivery, which can be reviewed on the websites of our group companies where you place your order. On demand we can also send the general terms of delivery to you.

Weidmuller Catalogs at a Glance

Catalog 1: Modular Terminal Blocks

- P-Series (Push-in technology)
- I-Series (IDC technology)
- Z-Series (Tension clamp technology)
- W-Series (Screw clamp technology)
- Stud Style (Screw clamp technology)
- Power Distribution Blocks and Fuse Blocks



Catalog 6: Tools

- Cutting
- Stripping
- Crimping
- Screwdrivers
- Automatic Machines
- Ferrules



Catalog 2: PCB Terminals and Connectors

- Space Saving Technologies
- Wide Variety of Clamping Technologies
- Pitches Ranging from 3.50 mm to 15.00 mm
- Orientations Ranging from 90° to 270°



Catalog 7: Marking Systems

- Terminal Markers
- Wire and Cable Markers
- Device and Equipment Markers
- Printing Systems and Software



Catalog 3: RockStar® – Heavy Duty Connectors

- Inserts
- Modular System
- Housings IP65 and IP69K
- Cable Glands



Catalog 8: Sensor Actuator Interface

- SAI Passive Blocks
- SAI Universal
- SAI ASI
- Cables and Connectors
- JACKPAC® IP67
- SteadyTEC®
- IE Connectors
- Accessories



Catalog 4: Electronics

- Inserts
- Modular System
- Housings IP65 and IP69K
- Cable Glands
- Surge Protection
- Relays
- Optocouplers



Catalog 9: Industrial Ethernet

- Unmanaged Switches
- Managed Switches
- Routers
- Media Converters



Catalog 4.5: Interface Units and PLC Solutions

- Interface Units
- PLC Interfaces – H-, R and S-System
- Byte Precabing Solution



Catalog 10: Connectivity Solutions Catalog

- Short Form Catalog
- Product Overview



CD PLC Selection Guide

- PLC selection
- I/O card selection
- Displays all interface modules and the compatible cable
- Displays the technical data for the selected interface module and ribbon cable



Catalog 11: Power Delivery and Protection Solutions

- Cutting
- Power Supplies
- DC/DC Converters
- Battery Back-up Units
- Diodes and Overvoltage Protection



Catalog 5: Enclosures and Cable Glands

- Enclosures
- Cable Glands
- Cabtite (Cable Entry System)



Catalog 12: Wireless Connectivity Solutions

- Wireless Ethernet
- Wireless Gateways
- Wireless Transceivers
- Antennas and Accessories



CD ROM

- Pdf files of All Master Catalogs, Brochures, Datasheets



www.weidmuller.com

Argentina	Iran	Singapore
Australia	Ireland	Slovakia
Austria	Israel	Slovenia
Azerbaijan	Italy	South Africa
Bahrain	Japan	South Korea
Belarus	Jordan	Spain
Belgium	Kazakhstan	Sweden
Bosnia- Herzegovina	Kuwait	Switzerland
Brazil	Latvia	Syria
Bulgaria	Lebanon	Taiwan
Canada	Lithuania	Thailand
Chile	Luxembourg	Turkey
China	Macedonia	UAE
Colombia	Malaysia	Ukraine
Costa Rica	Malta	United Kingdom
Croatia	Mexico	Uruguay
Czech Republic	Montenegro	USA
Denmark	Netherlands	Venezuela
Ecuador	New Zealand	Vietnam
Egypt	Norway	Yemen
Estonia	Oman	
Finland	Paraguay	
France	Peru	
Germany	Philippines	
Greece	Poland	
Hong Kong	Portugal	
Hungary	Qatar	
Iceland	Romania	
India	Russia	
Indonesia	Saudi Arabia	
	Serbia	

Weidmuller is the leading manufacturer of components for electrical connection technology to transmit energy, signals and data. The Weidmuller product portfolio ranges from terminal blocks, PCB connectors and terminals, protected components, Industrial Ethernet components, I/O components and relay sockets to power supplies and overvoltage protection modules suitable for all applications. Assemble Services, marking solutions with a variety of tools and software systems, round off the range. As an OEM supplier, the company sets global standards in the field of electrical connection technology.

Weidmuller, Canada
10 Spy Court
Markham, Ontario L3R 5H6
Telephone: (800) 268-4080
Facsimile: (905) 475-2798
Email: info1@weidmuller.ca
Website: www.weidmuller.ca

Weidmuller, Mexico
Blvd. Hermanos Serdán 698,
Col. San Rafael Oriente
Puebla, Puebla, Mexico
C.P. 72029
Telephone: 01 222 2686267
Facsimile: 01 222 2686219
Email: clientes@weidmuller.com.mx
Website: www.weidmuller.com.mx

Weidmuller, United States
821 Southlake Blvd.
Richmond, Virginia 23236
Telephone: (800) 849-9343
Facsimile: (804) 379-2593
Email: info@weidmuller.com
Website: www.weidmuller.com