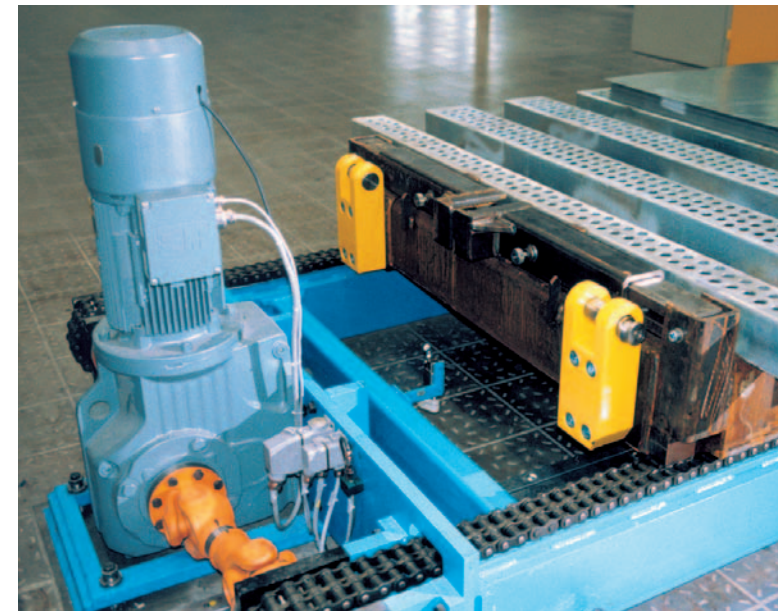


**IN THE HEART OF THE ELECTRICAL CABINET**  
**Premium power supply concepts from Weidmüller!**

Transformers and power supplies are the most important links in the energy supply chain of automation systems – they form the heart of every electrical cabinet. And because the right power supply is decisive for the reliable and trouble-free functioning of the connected components, individual power supply concepts are required. For many years, Weidmüller has proven its competence and experience by supplying power to electro-technical component groups :

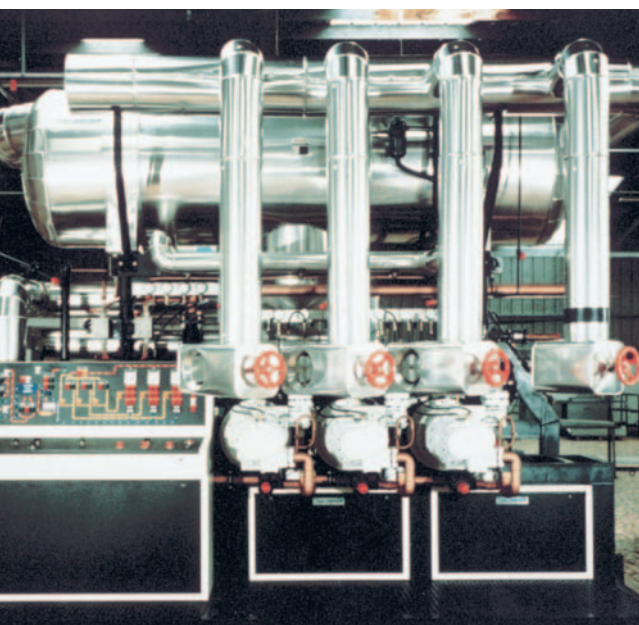
- in systems and mechanical engineering
- in industrial automation
- in the power supply industry
- in production lines
- in building technology

This all goes to prove that Weidmüller's power supply concepts fulfil all the prerequisites for implementing a stable and dependable power supply in all fields.



**Weidmüller's power supply concepts: your guarantee!**

Our customers have tough demands and special requirements – that is why we develop the right power supply concept for their individual needs. We offer transformer power supplies, switch-mode power supplies and fusing concepts – finely tuned to suit the required application. International approvals and wide input ranges mean our products can be utilized all over the world.



Argentina  
 Australia  
 Austria  
 Bahrain  
 Belarus  
 Belgium  
 Bosnia-Herzegovina  
 Brazil  
 Bulgaria  
 Canada  
 Chile  
 China  
 Colombia  
 Costa Rica  
 Croatia  
 Czech Republic  
 Denmark  
 Egypt  
 El Salvador  
 Estonia  
 Finland  
 France  
 Germany  
 Greece  
 Guatemala  
 Honduras  
 Hong Kong  
 Hungary  
 Iceland  
 India  
 Indonesia  
 Iran  
 Ireland  
 Israel  
 Italy

Japan  
 Jordan  
 Kuwait  
 Latvia  
 Lebanon  
 Lithuania  
 Luxembourg  
 Macedonia  
 Malaysia  
 Morocco  
 Mexico  
 Netherlands  
 New Zealand  
 Nicaragua  
 Norway  
 Oman  
 Pakistan  
 Panama  
 Peru  
 Philippines  
 Poland  
 Portugal  
 Qatar  
 Romania  
 Russia  
 Saudi Arabia  
 Singapore  
 Slovakia  
 Slovenia  
 South Africa  
 South Korea  
 Spain  
 Sweden  
 Switzerland  
 Syria

Taiwan  
 Thailand  
 Turkey  
 Ukraine  
 United Arab Emirates  
 United Kingdom  
 USA  
 Venezuela  
 Vietnam  
 Yemen  
 Yugoslavia

**Weidmüller is the leading manufacturer of components for electrical connection technology. The Weidmüller product portfolio ranges from terminal blocks, PCB connectors and terminals, protected components and relay sockets to power supply and overvoltage protection modules suitable for all applications. Electrical installation and marking material, basic I/O components and a variety of tools round off the range. As an OEM supplier, the company sets global standards in the field of electrical connection technology.**

[www.weidmuller.ca](http://www.weidmuller.ca) [www.weidmuller.ca](http://www.weidmuller.ca) [www.weidmuller.ca](http://www.weidmuller.ca)

**Canada**  
 W Interconnections Canada Inc.  
 10 Spy Court  
 Markham, Ontario L3R 5H6  
 Telephone: (800) 268-4080  
 Facsimile: (905) 475-2798  
 Email: info1@weidmuller.ca  
 Website: www.weidmuller.ca

**Mexico**  
 W Interconnections, S.A. de C.V.  
 Ave Ingenieros Civiles #204  
 Conjunto Industrial Chachapa  
 72990 Puebla, Pue. Mexico  
 Telephone: (222) 286 62 47  
 Facsimile: (222) 286 62 42  
 Website: www.weidmuller.com.mx

**United States**  
 W Interconnections, Inc.  
 821 Southlake Blvd.  
 Richmond, Virginia 23236  
 Telephone: (800) 849-9343  
 Facsimile: (804) 379-2593  
 Email: info@weidmuller.com  
 Website: www.weidmuller.com

Printed in Canada 99990335/02/2006

**PRODUCT OVERVIEW**



**POWER SUPPLIES**

**POWER SUPPLIES**

**POWER DELIVERY SOLUTIONS**

Power supplies are critical links in the supply of power to automation systems. They are the core of each and every control cabinet. A control voltage of 24V for the supply of all electrical components has become established worldwide. However, other voltages are still being used.

A power supply must be chosen with care, because it is crucial for the reliable functioning of all the components it supplies. Power supplies from Weidmüller have proven themselves over many years in the supply of power to electronics modules.

They can be safely used in industry and have a proven performance record, being run all over the world under the harshest of environmental conditions.

Weidmüller's Power Supply offering includes the following:

- Switchmode power supplies
- DC/DC converters
- Battery backup units
- Diode Modules

**World-wide use**

Weidmüller's power supplies carry international approvals for world-wide use in many different applications. They are used in applications in mechanical engineering, industrial automation, systems engineering, the power industry, production lines and building technology. They are cULus listed, CE certified and comply with EN 50081-1, EN 50082-2, and EN 61000-6-2. Some units also carry the following approvals: CSA, Class 2 and Class 1 Division 2.

**Temperature range**

Depending on the type, Weidmüller's power supplies can be used in ambient temperatures as low as -20°C (-4°F) and as high as 65°C (140°F). This makes them extremely versatile and allows you to worry about other more important issues in the control system.

**Compact construction**

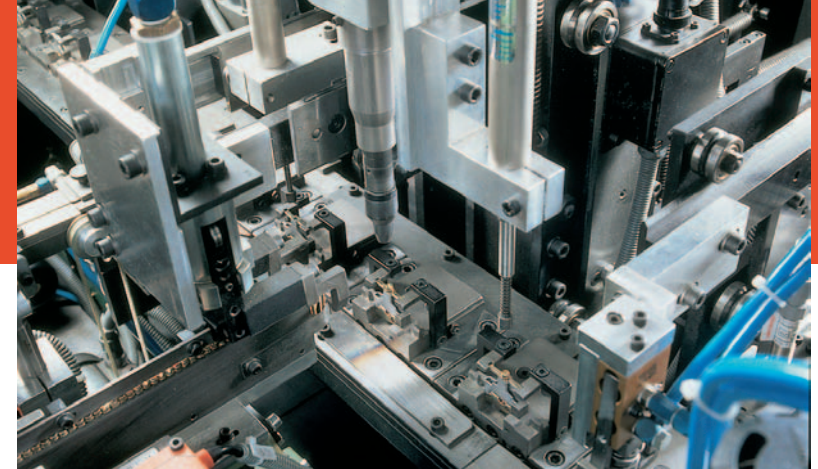
Weidmüller power supplies can be used in limited spaces due to their compact design and low basic volume requirements. This saves space in the cabinet and reduces costs.



When good enough just isn't good enough



# POWER SUPPLIES



## connectPower 1-ph WAVEPOWER switch-mode power supplies

- single-phase switch-mode power supply unit just 22.5 mm in width

**Output:** DC: 24 V  
**Input:** AC: 85...265 V/50/60Hz  
DC: 120...300 V

Type	Cat. No.
24 V / 0.5 A	CP-SNT 12W 9918840024

## connectPower – Weidmüller's switch-mode power supplies

Weidmüller's connectPower series of switch-mode power supplies are used in industry, building automation and in marine engineering.

As well as the availability of a wide variety of designs and features, the single-phase devices are rated from 12 to 500 W.

Further advantages of these products are:

- wide voltage range input from 85 to 264 V AC
- radio interference suppression to DIN EN 55022 Class B
- short-circuit and overload control on the output side
- connect in parallel for increased performance
- option for generating safety extra-low voltage SELV
- international approvals including Hazardous Areas
- silicone free

## connectPower 1-ph INSTAPOWER switch-mode power supplies

- single-phase switch-mode power supplies in the installation housing

**Output:** DC: 5...28 V  
**Input:** AC: 85...265 V/50/60 Hz  
DC: 120...300 V

Type	Cat. No.
24 V / 1 A	CP-SNT 24 W 9928890024 *
28 V / 1 A	CP-SNT 24W 9928890028
15 V / 1.5 A	CP-SNT 24 W 9928890015
12 V / 1.5 A	CP-SNT 24 W 9928890012 *
5 V / 2 A	CP-SNT 24 W 9928890005

## connectPower 1-ph Standard switch-mode power supplies

- single-phase switch-mode power supplies

**Output:** DC: 5...24 V  
**Input:** AC: 85...265 V/50/60 Hz  
DC: 120...300 V

Type	Cat. No.
24 V / 2.3 A	CP-SNT 55W 9927480024 *
24 V / 6.5 A	CP-SNT 160W 9925340024 *
24 V / 12.5 A	CP-SNT 300W 9916250024
48 V / 1.04 A	CP-SNT 55W 9927480048
48 V / 3.25 A	CP-SNT 160W 9925340048
12 V / 3 A	CP-SNT 55W 9927480012 *
12 V / 10 A	CP-SNT 160W 9925340012
5 V / 3 A	CP-SNT 55W 9927480005
5 V / 10 A	CP-SNT 160W 9925340005

\* Certified for CSA Class 1 Division 2 Areas

## connectPower 1-ph ECOLINE switch-mode power supplies

- single-phase switch-mode power supplies

**Output:** DC: 24 V  
**Input:** AC: 85...264 V/50/60 Hz  
DC: 120...370 V

Type	Cat. No.
24 V / 3 A	CP-SNT 70W 8708660000
24 V / 5 A	CP-NT 120W 8708670000
24 V / 10 A	CP-SNT 250W 8708680000
24 V / 20 A	CP-SNT 500W 8778870000

## connectPower 3-ph Standard switch-mode power supplies

- three-phase switch-mode power supplies

**Output:** DC: 24 V  
**Input:** AC: 3x340...575 V/50/60 Hz

Type	Cat. No.
24 V / 2.3 A	CP-SNT3 55W 9917790324
24 V / 6.5 A	CP-SNT3 160W 9925340324
24 V / 12.5 A	CP-SNT3 300W 7924740324
24 V / 25 A	CP-SNT3 600W 7920210324
24 V / 40 A	CP-SNT3 1000W 7918960324

\*\* Consult factory for availability

Type	Cat. No.
24 V / 10 A	CP-SNT3 250W 8708700000
24 V / 20 A	CP-SNT3 500W 8708710000
24 V / 40 A	CP-SNT3 1000W 8708730000 **

## connectPower DC/DC converters

- Module to isolate/convert one DC voltage source to another

**Output:** DC: 5...24 V  
**Input:** DC: 9...16 V

Type	Cat. No.
24 V / 2 A	CP-DCDC 50W 9919371224 *
15 V / 3 A	CP-DCDC 50W 9919371215 *
12 V / 3 A	CP-DCDC 50W 9919371212 *
5 V / 8 A	CP-DCDC 50W 9919371205 *

**Output:** DC: 5...24 V  
**Input:** DC: 18...24 V

Type	Cat. No.
24 V / 2 A	CP-DCDC 50W 9919372424 *
15 V / 3 A	CP-DCDC 50W 9919372415 *
12 V / 3 A	CP-DCDC 50W 9919372412 *
5 V / 8 A	CP-DCDC 50W 9919372405 *

\* Certified for CSA Class 1 Division 2 Areas

## Battery Backup Unit

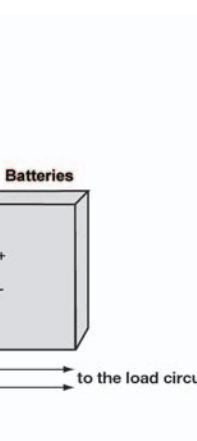
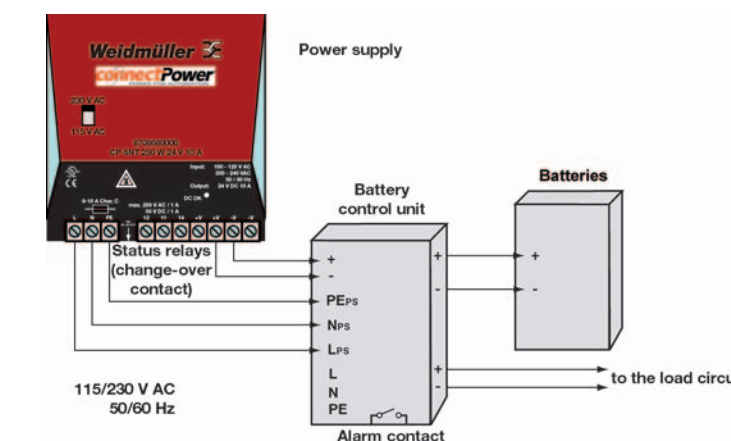
- Module for monitoring DC power to critical processes and charging of batteries

**Output:** DC: 12...24 V  
**Input:** AC: 85...265 V/50/60 Hz  
DC: 120...300 V

Type	Cat. No.
24 V / 15 A	CP-BBU 24VDC 9916280024 *
12 V / 15 A	CP-BBU 12VDC 9916280012 *

## connectPower BBU

Switched-mode power supply, battery control unit and battery providing an uninterrupted power supply



\* Certified for CSA Class 1 Division 2 Areas

Type	Cat. No.
24 V / 20 A	CP-DM 10 8710620000
24 V / 40 A	CP-DM 20 8768650000
24 V / 30 A	RS2D/SC 9987390000
24 V / 40 A	RSD-20A 7940005218
24 V / 20A x 2	RSD-20Ax2 7940005219

## WAVEGUARD Electronic fusing

- Electronic fusing for selective, dynamic and static fusing of DC circuits

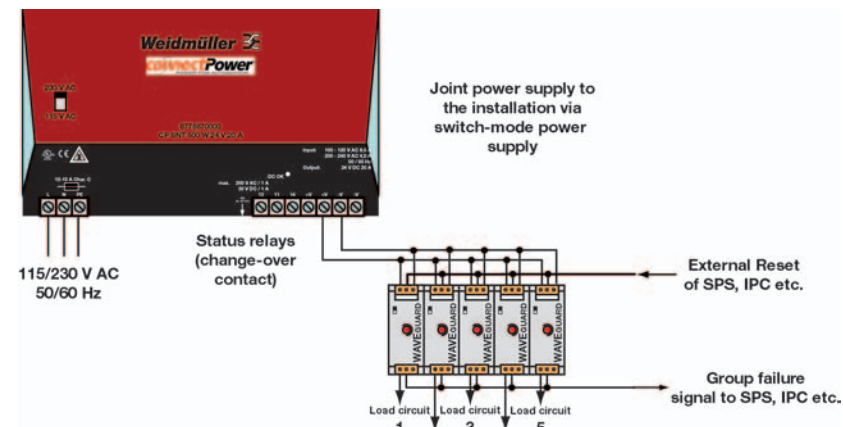
**Output:** DC: 24 V  
**Input:** DC: 2 x 24 V

Type	Cat. No.
24 V / 0.5...5.0 A	WGS screw clamp 8710270000
24 V / 0.5...5.0 A	WGZ tension clamp 8727630000
24 V / 4.0 A	WGS screw clamp 8783400000
24 V / 4.0 A	WGZ tension clamp 8857900000

Fixed current versions of 1.6 A, 3.15 A, 6.3 A and 8 A are also available. Consult factory.

## WAVEGUARD

Electronic fusing for selective, dynamic and static fusing of DC circuits



## WAVEGUARD – Weidmüller's fusing concept

The problem: Due to their technical characteristics, switched-mode power supplies provide no, or just a very limited, dynamic output current. When an overload condition occurs, the device limits the current for protection purposes and shuts down the voltage supply. The resulting loss of power means that conventional circuit breakers and safety fuses are not reliably tripped.

The solution: Weidmüller's fusing concept WAVEGUARD provides selective electronics fusing at this point.

With Weidmüller's fusing concept, only the failing circuit is isolated and its supply of power shut down. The result is greater plant availability with troubleshooting times, in systems becoming more complex by the day, reduced to a minimum.

