

## WAVESERIES

### WAZ5 PRO Thermo

**Weidmüller Interface GmbH & Co. KG**

Klingenbergstraße 16

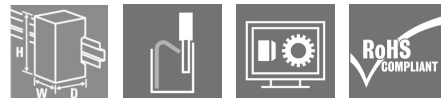
D-32758 Detmold

Germany

Fon: +49 5231 14-0

Fax: +49 5231 14-292083

www.weidmueller.com



When used for industrial monitoring applications, sensors can record ambience conditions. Sensor signals are used within the process to continually track changes to the area being monitored. Both digital and analogue signals can occur.

Normally an electrical voltage or current value is produced which corresponds proportionally to the physical variables that are being monitored. Analogue signal processing is required when automation processes have to constantly maintain or reach defined conditions. This is particularly significant for process automation applications. Standardised electrical signals are typically used for process engineering. Analogue standardised currents / voltage 0(4)...20 mA/ 0...10 V have established themselves as physical measurement and control variables.

Weidmüller meets the ever increasing challenges of automation and offers a product portfolio tailored to the requirements of handling sensor signals in analogue signal processing.

The analogue signal processing products can be used universally in combination with other Weidmüller products and in combination among each other. Their electrical and mechanical design is such that they require only minimal wiring efforts.

Housing types and wire-connection methods matched to the respective application facilitate the universal use in process and industrial automation applications.

The product line includes the following functions:

- Isolating transformers, supply isolators and signal converters for DC standard signals
- Temperature measuring transducers for resistance thermometers and thermocouples,
- frequency converters,
- potentiometer-measuring-transducers,
- bridge measuring transducers (strain gauges)
- trip amplifiers and modules for monitoring electrical and non-electrical process variables
- AD/DA converters
- displays
- calibration devices

#### General ordering data

The products mentioned are available as pure signal converters / isolation transducers, 2-way/3-way isolators, supply isolators, passive isolators or as trip amplifiers.

Order No.	WAZ5 PRO Thermo 8560730000
Version	TC isolating transformer, Tension clamp connection
GTIN (EAN)	4032248207343
Qty.	1 pc(s).

**WAVESERIES**  
**WAZ5 PRO Thermo**

**Weidmüller Interface GmbH & Co. KG**  
 Klingenbergstraße 16  
 D-32758 Detmold  
 Germany  
 Fon: +49 5231 14-0  
 Fax: +49 5231 14-292083  
 www.weidmueller.com

**Technical data**
**Dimensions and weights**

Length	92.4 mm	Length (inches)	3.638 inch
Width	17.5 mm	Width (inches)	0.689 inch
Depth	112.4 mm	Depth (inches)	4.425 inch
Net weight	132 g		

**Temperatures**

Operating temperature	0 °C...55 °C	Storage temperature	-20 °C...85 °C
-----------------------	--------------	---------------------	----------------

**Probability of failure**

MTTF	270 Jahre
------	-----------

**Input**

Number of inputs	1	Sensor	Thermo element (IEC 584) type: K,J,T,E,N,R,S,B
Line resistance in measuring circuit	50 Ω	Temperature input range	-200...+1820 °C

**Output**

Number of outputs	1	Output voltage, note	0...10 V
Output current	0...20 mA, 4...20 mA	Wire break detection	LED flashing (output value: > 20 mA, >10 V)
Fine adjustment	± 5% (switchable)	cold junction compensation	Yes
load impedance voltage	≥ 1 kΩ	load impedance current	≤ 600 Ω
Offset voltage	max. 0.05 V	Offset current	max. 100 µA
Status indicator	Module active: LED on/ wire breakage: LED flashing/ Error: LED off		

**General data**

Accuracy	Type K & J: -150°C... 1200°C ±(3°C + 0,1% of range), Type T: -150°C... 400°C ±(3°C + 0,1% of range), Type E: -150°C... 1000°C ±(3°C + 0,1% of range), Type N: -150°C... 1300°C ±(3°C + 0,1% of range), Type R & S: 200°C...1760°C ±(6°C + 0,1% of range), Type B: 500°C...1820°C ±(6°C + 0,1% of range)	Configuration	DIP switch
Current-carrying capacity of cross- connect.	≤ 2 A	Galvanic isolation	3-way isolator
Input/Output	configurable	Linearity	Yes
Mounting rail	TS 35	Power consumption	800...850...950 mW at I <sub>OUT</sub> = 20 mA
Step response time	without filter: max. 1.4 s; with filter: max. 7.5 s	Supply voltage	24 V DC ± 20 %

**WAVESERIES**  
**WAZ5 PRO Thermo**

**Weidmüller Interface GmbH & Co. KG**  
 Klingenbergstraße 16  
 D-32758 Detmold  
 Germany  
 Fon: +49 5231 14-0  
 Fax: +49 5231 14-292083  
 www.weidmueller.com

**Technical data****Insulation coordination**

Clearance & creepage distances	≥ 3 mm	EMC standards	EN 55011, EN 61000-6
Galvanic isolation	3-way isolator	Impulse withstand voltage	4 kV
Insulation voltage	2 kV <sub>eff</sub> / 5 s	Insulation voltage input or output/rail	4 kV <sub>eff</sub> / 1 min.
Insulation voltage input or output/supply	2 kV <sub>eff</sub> / 5 s	Pollution severity	2
Rated voltage	300 V	Standards	DIN EN 50178, DIN EN 61000-4-2
Surge voltage category	III		

**Connection data**

Type of connection	Tension clamp connection	Stripping length, rated connection	7 mm
Clamping range, rated connection	1.5 mm <sup>2</sup>	Clamping range, rated connection, min.	0.5 mm <sup>2</sup>
Clamping range, rated connection, max.	2.5 mm <sup>2</sup>		

**Classifications**

ETIM 4.0	EC002653	ETIM 5.0	EC002653
ETIM 6.0	EC002919	UNSPSC	31-12-10-07
eClass 5.1	27-21-01-20	eClass 6.2	27-21-01-20
eClass 7.1	27-21-01-20	eClass 8.1	27-21-01-20
eClass 9.0	27-21-01-20	eClass 9.1	27-21-01-29

**Product information**

Product information	This product will soon be replaced by a new product. Please do not use with new systems. Please contact our technical support.
Descriptive text accessories	Cross-connector for power supplies and markers – refer to Accessories

**Approvals**

Approvals



ROHS Conform

**Downloads**

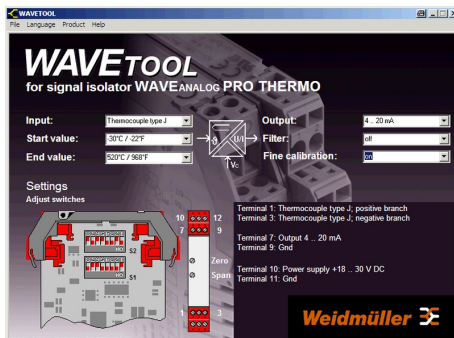
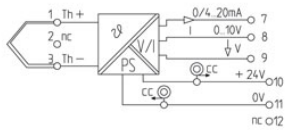
Approval/Certificate/Document of Conformity	<a href="#">Declaration of Conformity</a>
Brochure/Catalogue	<a href="#">CAT 4.1 ELECTR 16/17 EN</a>
Engineering Data	<a href="#">EPLAN_WSCAD</a>
Software	<a href="#">WaveTool.zip</a>
User Documentation	<a href="#">Instruction sheet</a>

**WAVESERIES  
WAZ5 PRO Thermo**

**Weidmüller Interface GmbH & Co. KG**  
 Klingenbergstraße 16  
 D-32758 Detmold  
 Germany  
 Fon: +49 5231 14-0  
 Fax: +49 5231 14-292083  
 www.weidmueller.com

**Drawings**

**Electric symbol**



Screenshot example, Wave tool software

**WAVESERIES  
WAZ5 PRO Thermo**

**Weidmüller Interface GmbH & Co. KG**  
 Klingenbergstraße 16  
 D-32758 Detmold  
 Germany  
 Fon: +49 5231 14-0  
 Fax: +49 5231 14-292083  
 www.weidmueller.com

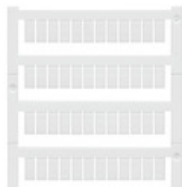
**Accessories**
**ZQV 2.5N**

**Spring connection with tension clamp Technology**

Tension clamp technology is a universal contact system for all common conductor connection types. Its fantastic level of flexibility makes the tension clamp a profitable alternative connection.

**General ordering data**

Type	Order No.	Version	GTIN (EAN)	Qty.
ZQV 2.5N/2 GE	<a href="#">1693800000</a>	Z-series, Cross-connector, 24 A	4008190883621	60 pc(s).
ZQV 2.5N/2 BL	<a href="#">1717990000</a>	Accessories, Cross- connector, 24 A	4008190349295	60 pc(s).
ZQV 2.5N/2 RT	<a href="#">1717900000</a>	Accessories, Z-series, Cross- connector, 24 A	4008190349288	60 pc(s).
ZQV 2.5N/2 SW	<a href="#">1718080000</a>	Accessories, Cross- connector, 24 A	4008190349301	60 pc(s).

**Blank**


WS markers are the perfect match for the W-series connectors. Thanks to their system compatibility, the WS tags can also be used with the I-series and the Z-series. The large marking surfaces do not only permit long character strings but also multi-line text. WS markers are ideal for labels with long, customised character strings. Thanks to the proven MultiCard format, printing with laser printer, PrintJet ADVANCED, plotter or MC-Mobilo is possible.

- Can be fitted in strips or individually
- Markers in proven MultiCard format

**General ordering data**

Type	Order No.	Version	GTIN (EAN)	Qty.
WS 10/5 MC NE WS	<a href="#">1635000000</a>	WS, Terminal marker, 10 x 5 mm, Pitch in mm (P): 5.00 Weidmueller, Allen-Bradley, White	4008190261948	720 pc(s).