

## RCMKIT 24VDC 2CO LED GN

Weidmüller Interfaces GmbH & Co. KG

Postfach 3030

32760 Detmold

Tel. +49 5231 14-0

Fax. +49 5231 14-2083

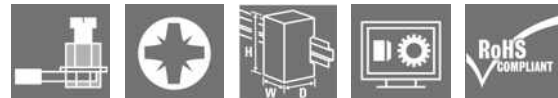
info@weidmueller.com

www.weidmueller.com

### Product image



Similar to illustration



### General ordering data

Version	RIDERSERIES RCM, Relay module, Number of contacts: 2, CO contact with test button AgNi, Rated control voltage: 24 V DC, Continuous current: 12 A, Screw connection, Test button available: Yes
Order No.	<a href="#">7940007061</a>
Type	RCMKIT 24VDC 2CO LED GN
GTIN (EAN)	4032248474790
Qty.	10 pc(s).
Relevant base	<a href="#">8690880000</a>
Relevant relay	<a href="#">8689860000</a>

## RCMKIT 24VDC 2CO LED GN

Weidmüller Interfaces GmbH &amp; Co. KG

Postfach 3030

32760 Detmold

Tel. +49 5231 14-0

Fax. +49 5231 14-2083

info@weidmueller.com

www.weidmueller.com

## Technical data

## Dimensions and weights

Depth	79 mm	Depth (inches)	3.11 inch
Height	82 mm	Height (inches)	3.228 inch
Width	27 mm	Width (inches)	1.063 inch
Net weight	98.5 g		

## Temperatures

Storage temperature	-40 °C...70 °C	Operating temperature	-40 °C...70 °C
Operating temperature, min.	-40 °C	Operating temperature, max.	70 °C
Humidity	40 °C / 93 % rel. humidity, no condensation		

## Control side

Rated control voltage	24 V DC	Rated current DC	31.3 mA
Power rating	750 mW	Pull-in/drop-out voltage, typ.	18 V / 2.4 V DC
Coil resistance	777 Ω ± 10 %	Coil tolerance	10 %
Status indicator	Green LED	Protective circuit	Free-wheeling diode

## Load side

Rated switching voltage	240 V AC	Continuous current	12 A
Max. switching frequency at rated load	0.1 Hz	Inrush current	24 A / 20 ms
AC switching capacity (resistive), max.	3000 VA	DC switching capacity (resistive), max.	288 W @ 24 V
Switch-on delay	≤ 15 ms	Switch-off delay	≤ 10 ms
Contact type	2 CO contact with test button (AgNi)	Mechanical service life	AC coil 20 x 10 <sup>6</sup> switching cycles, DC coil 30 x 10 <sup>6</sup> switching cycles
Min. switching power	1 mA @ 24 V, 10 mA @ 12 V, 100 mA @ 5 V		

## General data

Rail	TS 35	Test button available	Yes
Version of test button	lockable	Mechanical switch position indicator	Yes
Colour	black	UL 94 flammability rating	V-2

## Insulation coordination

Rated voltage	250 V	Pollution severity	2
Surge voltage category	III	Insulating material group	IIIa
Creepage and clearance distance input – output	≥ 4 mm	Dielectric strength, Input/Output	2.5 kV <sub>eff</sub> / 1 Min.
Dielectric strength of open contact	1.2 kV <sub>eff</sub> / 1 min.	Impulse withstand voltage	5 kV (1.2/50 μs)
Protection degree	IP20		

## Further details of approvals / standards

Certificate no. (CSA) relay	249409-2426937	Certificate no. (cURus) relay	E522350
Certificate no. (cURus) base	E223759		

## RCMKIT 24VDC 2CO LED GN

Weidmüller Interfaces GmbH &amp; Co. KG

Postfach 3030

32760 Detmold

Tel. +49 5231 14-0

Fax. +49 5231 14-2083

## Technical data

[info@weidmueller.com](mailto:info@weidmueller.com)
[www.weidmueller.com](http://www.weidmueller.com)
[www.weidmueller.com](http://www.weidmueller.com)
[www.weidmueller.com](http://www.weidmueller.com)
[www.weidmueller.com](http://www.weidmueller.com)
[www.weidmueller.com](http://www.weidmueller.com)
[www.weidmueller.com](http://www.weidmueller.com)
[www.weidmueller.com](http://www.weidmueller.com)
[www.weidmueller.com](http://www.weidmueller.com)
[www.weidmueller.com](http://www.weidmueller.com)
[www.weidmueller.com](http://www.weidmueller.com)
[www.weidmueller.com](http://www.weidmueller.com)
[www.weidmueller.com](http://www.weidmueller.com)
[www.weidmueller.com](http://www.weidmueller.com)
[www.weidmueller.com](http://www.weidmueller.com)
[www.weidmueller.com](http://www.weidmueller.com)
[www.weidmueller.com](http://www.weidmueller.com)
[www.weidmueller.com](http://www.weidmueller.com)
[www.weidmueller.com](http://www.weidmueller.com)
[www.weidmueller.com](http://www.weidmueller.com)
[www.weidmueller.com](http://www.weidmueller.com)
[www.weidmueller.com](http://www.weidmueller.com)
[www.weidmueller.com](http://www.weidmueller.com)
[www.weidmueller.com](http://www.weidmueller.com)
[www.weidmueller.com](http://www.weidmueller.com)
[www.weidmueller.com](http://www.weidmueller.com)
[www.weidmueller.com](http://www.weidmueller.com)
[www.weidmueller.com](http://www.weidmueller.com)
[www.weidmueller.com](http://www.weidmueller.com)
[www.weidmueller.com](http://www.weidmueller.com)
[www.weidmueller.com](http://www.weidmueller.com)
[www.weidmueller.com](http://www.weidmueller.com)
[www.weidmueller.com](http://www.weidmueller.com)
[www.weidmueller.com](http://www.weidmueller.com)
[www.weidmueller.com](http://www.weidmueller.com)
[www.weidmueller.com](http://www.weidmueller.com)
[www.weidmueller.com](http://www.weidmueller.com)
[www.weidmueller.com](http://www.weidmueller.com)
[www.weidmueller.com](http://www.weidmueller.com)
[www.weidmueller.com](http://www.weidmueller.com)
[www.weidmueller.com](http://www.weidmueller.com)
[www.weidmueller.com](http://www.weidmueller.com)
[www.weidmueller.com](http://www.weidmueller.com)
[www.weidmueller.com](http://www.weidmueller.com)
[www.weidmueller.com](http://www.weidmueller.com)
[www.weidmueller.com](http://www.weidmueller.com)
[www.weidmueller.com](http://www.weidmueller.com)
[www.weidmueller.com](http://www.weidmueller.com)
[www.weidmueller.com](http://www.weidmueller.com)
[www.weidmueller.com](http://www.weidmueller.com)
[www.weidmueller.com](http://www.weidmueller.com)
[www.weidmueller.com](http://www.weidmueller.com)
[www.weidmueller.com](http://www.weidmueller.com)
[www.weidmueller.com](http://www.weidmueller.com)
[www.weidmueller.com](http://www.weidmueller.com)
[www.weidmueller.com](http://www.weidmueller.com)
[www.weidmueller.com](http://www.weidmueller.com)
[www.weidmueller.com](http://www.weidmueller.com)
[www.weidmueller.com](http://www.weidmueller.com)
[www.weidmueller.com](http://www.weidmueller.com)
[www.weidmueller.com](http://www.weidmueller.com)
[www.weidmueller.com](http://www.weidmueller.com)
[www.weidmueller.com](http://www.weidmueller.com)
[www.weidmueller.com](http://www.weidmueller.com)
[www.weidmueller.com](http://www.weidmueller.com)
[www.weidmueller.com](http://www.weidmueller.com)

## Connection data

Wire connection method	Screw connection	Clamping range, rated connection	2.5 mm <sup>2</sup>
Clamping range, min.	0.5 mm <sup>2</sup>	Clamping range, max.	2.5 mm <sup>2</sup>
Blade size	size PH1		

## Classifications

ETIM 6.0	EC001437	ETIM 7.0	EC001437
ETIM 8.0	EC001437	ECLASS 9.0	27-37-16-01
ECLASS 9.1	27-37-16-01	ECLASS 10.0	27-37-16-01
ECLASS 11.0	27-37-16-01	ECLASS 12.0	27-37-16-01

## Environmental Product Compliance

REACH SVHC	Lead 7439-92-1
------------	----------------

## Approvals

Approvals



ROHS	Conform
------	---------

## Downloads

Approval/Certificate/Document of Conformity	<a href="#">EU Konformitätserklärung / EU Declaration of Conformity</a>
Engineering Data	<a href="#">WSCAD</a>
Catalogues	<a href="#">Catalogues in PDF-format</a>

**RCMKIT 24VDC 2CO LED GN**

**Weidmüller Interfaces GmbH & Co. KG**

Postfach 3030

32760 Detmold

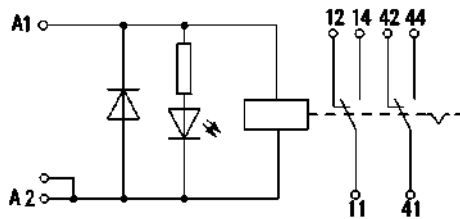
Tel. +49 5231 14-0

Fax. +49 5231 14-2083

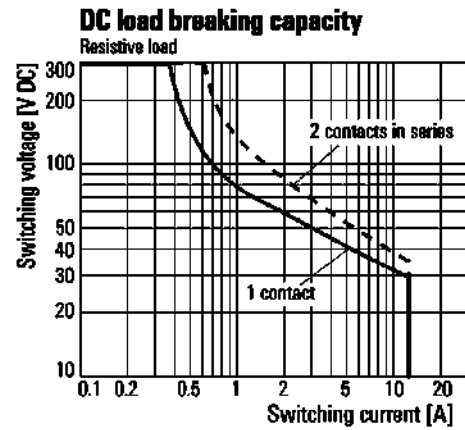
info@weidmueller.com

**Drawings**

**Wiring diagram**

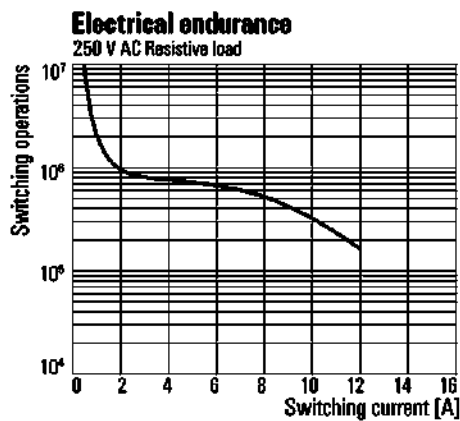


**Graph**



DC load limit curve  
Resistive load

**Graph**



Electrical service life  
250 V AC resistive load

**RCMKIT 24VDC 2CO LED GN**

**Weidmüller Interfaces GmbH & Co. KG**

Postfach 3030

32760 Detmold

Tel. +49 5231 14-0

Fax. +49 5231 14-2083

info@weidmueller.com

weidmueller.com

**Drawings**

