

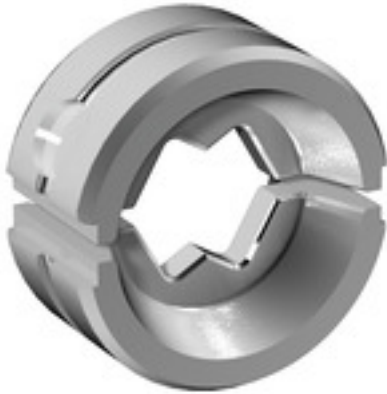
**ES EPG/HPG 60 WM 6****Weidmüller Interface GmbH & Co. KG**

Klingenbergstraße 26

D-32758 Detmold

Germany

www.weidmueller.com

**Similar to illustration****Crimping tools for cable lugs, connectors and wire-end ferrules with interchangeable inserts**

- extremely fast processing thanks to hydraulic support
- large processing range up to 300 mm<sup>2</sup>
- 270° revolving quick-action crimping head
- automatic pressure limitation and monitoring via pressure sensor
- electronic control and monitoring of the crimping process
- Saving of all crimping cycles and error messages to internal memory
- Reading of all cycles and error messages via USB
- Li-ion rechargeable battery with charge status indicator: 18 V, 1.5 Ah

**General ordering data**

Version	Crimping tool insert, WM crimp
Order No.	<a href="#">2469380000</a>
Type	ES EPG/HPG 60 WM 6
GTIN (EAN)	4050118532937
Qty.	1 pc(s).

**ES EPG/HPG 60 WM 6****Weidmüller Interface GmbH & Co. KG**

Klingenbergstraße 26

D-32758 Detmold

Germany

www.weidmueller.com

**Technical data****Dimensions and weights**

Depth	22 mm	Depth (inches)	0.866 inch
Height	42 mm	Height (inches)	1.654 inch
Width	42 mm	Width (inches)	1.654 inch
Net weight	150 g		

**Crimp inserts**

Crimp cross-section copper	6	Crimping width	7 mm
Crimping width in mm	7		

**Description of contact**

Conductor cross-section, max. AWG	10	Type of contact	Euro series cable lug
-----------------------------------	----	-----------------	-----------------------

**tool data crimping**

Cable lug cross section	nominal	6 mm <sup>2</sup>
Crimping type/profile	WM crimp	

**Classifications**

ETIM 6.0	EC001282	ETIM 7.0	EC001282
ETIM 8.0	EC001282	ETIM 9.0	EC001282
ECLASS 9.0	21-04-90-90	ECLASS 9.1	21-01-90-90
ECLASS 10.0	21-04-90-90	ECLASS 11.0	21-04-90-90
ECLASS 12.0	21-04-90-90	ECLASS 13.0	21049090

**Downloads**

Catalogues	<a href="#">Catalogues in PDF-format</a>
------------	--

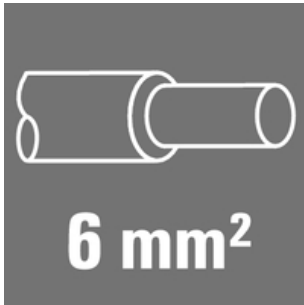
**ES EPG/HPG 60 WM 6**

**Weidmüller Interface GmbH & Co. KG**  
 Klingenbergstraße 26  
 D-32758 Detmold  
 Germany

www.weidmueller.com

**Accessories**

**6 mm<sup>2</sup>**



**The use of insulated connectors guarantees users consistent electrical connection quality in the long term.**

- Wide range of insulated and non-insulated cable lugs and connectors
- Tubular cable lugs according to current market standards (Euroseries)
- Compression cable lugs acc. to DIN 46235
- Sheet metal cable lugs acc. to DIN 46234
- Insulated ring cable lugs to DIN 46237
- Insulated pin cable lugs to DIN 46231

**General ordering data**

Type	VPN/-6	Version	
Order No.	<a href="#">1498610000</a>	Version	cable lug, terminal end,6 mm <sup>2</sup> ,6 mm <sup>2</sup>
GTIN (EAN)	4050118307931		
Qty.	100 pc(s).		

**Tools**



**Crimping tools for cable lugs, connectors and wire-end ferrules with interchangeable inserts**

- extremely fast processing thanks to hydraulic support
- large processing range up to 400 mm<sup>2</sup>
- 360° revolving quick action crimping head
- automatic pressure limitation and monitoring via pressure sensor
- Additional features for APG series:
- electronic control and monitoring of the crimping process
- Saving of all crimping cycles and error messages to internal memory
- Reading of all cycles and error messages via USB

**General ordering data**

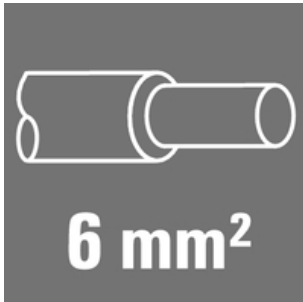
Type	HPG 60	Version	
Order No.	<a href="#">2453820000</a>	Version	6mm <sup>2</sup> , 300mm <sup>2</sup> , Hexagonal crimp, WM crimp, Indent crimp,
GTIN (EAN)	4050118468427	Version	Trapezoidal crimp, Oval crimping
Qty.	1 pc(s).		

## ES EPG/HPG 60 WM 6

**Weidmüller Interface GmbH & Co. KG**  
 Klingenbergstraße 26  
 D-32758 Detmold  
 Germany

www.weidmueller.com

## Accessories

6 mm<sup>2</sup>

**The use of insulated connectors guarantees users consistent electrical connection quality in the long term.**

- Wide range of insulated and non-insulated cable lugs and connectors
- Tubular cable lugs according to current market standards (Euroseries)
- Compression cable lugs acc. to DIN 46235
- Sheet metal cable lugs acc. to DIN 46234
- Insulated ring cable lugs to DIN 46237
- Insulated pin cable lugs to DIN 46231

## General ordering data

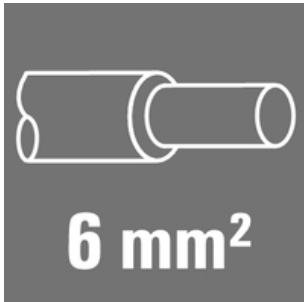
Type	KWN-M10/-6 90	Version
Order No.	<a href="#">1496150000</a>	cable lug, terminal end,6 mm <sup>2</sup>
GTIN (EAN)	4050118305579	
Qty.	100 pc(s).	
Type	KWN-M5/-6 90	Version
Order No.	<a href="#">1496120000</a>	cable lug, terminal end,6 mm <sup>2</sup>
GTIN (EAN)	4050118305753	
Qty.	100 pc(s).	
Type	KWN-M8/-6 90	Version
Order No.	<a href="#">1496140000</a>	cable lug, terminal end,6 mm <sup>2</sup>
GTIN (EAN)	4050118306248	
Qty.	100 pc(s).	
Type	KWN-M6/-6 90	Version
Order No.	<a href="#">1496130000</a>	cable lug, terminal end,6 mm <sup>2</sup>
GTIN (EAN)	4050118305982	
Qty.	100 pc(s).	
Type	KWN-M4/-6 90	Version
Order No.	<a href="#">1497220000</a>	cable lug, terminal end,6 mm <sup>2</sup>
GTIN (EAN)	4050118306477	
Qty.	100 pc(s).	
Type	KWN-M12/-6 90	Version
Order No.	<a href="#">1496170000</a>	cable lug, terminal end,6 mm <sup>2</sup>
GTIN (EAN)	4050118305869	
Qty.	100 pc(s).	

## ES EPG/HPG 60 WM 6

**Weidmüller Interface GmbH & Co. KG**  
 Klingenbergstraße 26  
 D-32758 Detmold  
 Germany

www.weidmueller.com

## Accessories

6 mm<sup>2</sup>

**The use of insulated connectors guarantees users consistent electrical connection quality in the long term.**

- Wide range of insulated and non-insulated cable lugs and connectors
- Tubular cable lugs according to current market standards (Euroseries)
- Compression cable lugs acc. to DIN 46235
- Sheet metal cable lugs acc. to DIN 46234
- Insulated ring cable lugs to DIN 46237
- Insulated pin cable lugs to DIN 46231

## General ordering data

Type	KRN-M10/-6	Version
Order No.	<a href="#">1497200000</a>	cable lug, terminal end,6 mm <sup>2</sup>
GTIN (EAN)	4050118306385	
Qty.	100 pc(s).	
Type	KRN-M6/-6	Version
Order No.	<a href="#">1497180000</a>	cable lug, terminal end,6 mm <sup>2</sup>
GTIN (EAN)	4050118306729	
Qty.	100 pc(s).	
Type	KRN-M5/-6	Version
Order No.	<a href="#">1497170000</a>	cable lug, terminal end,6 mm <sup>2</sup>
GTIN (EAN)	4050118306590	
Qty.	100 pc(s).	
Type	KRN-M12/-6	Version
Order No.	<a href="#">1497210000</a>	cable lug, terminal end,6 mm <sup>2</sup>
GTIN (EAN)	4050118306347	
Qty.	100 pc(s).	
Type	KRN-M4/-6	Version
Order No.	<a href="#">1497150000</a>	cable lug, terminal end,6 mm <sup>2</sup>
GTIN (EAN)	4050118306767	
Qty.	100 pc(s).	
Type	KRN-M8/-6	Version
Order No.	<a href="#">1497190000</a>	cable lug, terminal end,6 mm <sup>2</sup>
GTIN (EAN)	4050118306613	
Qty.	100 pc(s).	

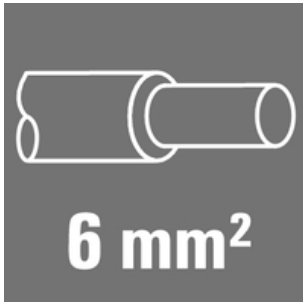
## ES EPG/HPG 60 WM 6

**Weidmüller Interface GmbH & Co. KG**  
 Klingenbergstraße 26  
 D-32758 Detmold  
 Germany

www.weidmueller.com

## Accessories

### 6 mm<sup>2</sup>



**The use of insulated connectors guarantees users consistent electrical connection quality in the long term.**

- Wide range of insulated and non-insulated cable lugs and connectors
- Tubular cable lugs according to current market standards (Euroseries)
- Compression cable lugs acc. to DIN 46235
- Sheet metal cable lugs acc. to DIN 46234
- Insulated ring cable lugs to DIN 46237
- Insulated pin cable lugs to DIN 46231

### General ordering data

Type	KP-M8/-6	Version	
Order No.	<a href="#">1497860000</a>		cable lug, terminal end,6 mm <sup>2</sup>
GTIN (EAN)	4050118307238		
Qty.	100 pc(s).		
Type	KP-M5/-6	Version	
Order No.	<a href="#">1497840000</a>		cable lug, terminal end,6 mm <sup>2</sup>
GTIN (EAN)	4050118307405		
Qty.	100 pc(s).		
Type	KP-M6/-6	Version	
Order No.	<a href="#">1497850000</a>		cable lug, terminal end,6 mm <sup>2</sup>
GTIN (EAN)	4050118307245		
Qty.	100 pc(s).		

### Tools



**Crimping tools for cable lugs, connectors and wire-end ferrules with interchangeable inserts**

- extremely fast processing thanks to hydraulic support
- large processing range up to 300 mm<sup>2</sup>
- 270° revolving quick-action crimping head
- automatic pressure limitation and monitoring via pressure sensor
- electronic control and monitoring of the crimping process
- Saving of all crimping cycles and error messages to internal memory
- Reading of all cycles and error messages via USB
- Li-ion rechargeable battery with charge status indicator: 18 V, 1.5 Ah

### General ordering data

Type	EPG 60	Version	
Order No.	<a href="#">2453810000</a>		Pressing tools, Tools, Pressing tool, 6mm <sup>2</sup> , 300mm <sup>2</sup> , Hexagonal crimp,
GTIN (EAN)	4050118468434		WM crimp, Indent crimp, Trapezoidal crimp, Oval crimping
Qty.	1 pc(s).		

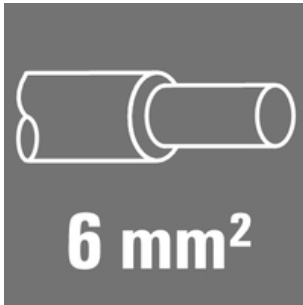
**ES EPG/HPG 60 WM 6**

**Weidmüller Interface GmbH & Co. KG**  
 Klingenbergstraße 26  
 D-32758 Detmold  
 Germany

www.weidmueller.com

**Accessories**

**6 mm<sup>2</sup>**



**The use of insulated connectors guarantees users consistent electrical connection quality in the long term.**

- Wide range of insulated and non-insulated cable lugs and connectors
- Tubular cable lugs according to current market standards (Euroseries)
- Compression cable lugs acc. to DIN 46235
- Sheet metal cable lugs acc. to DIN 46234
- Insulated ring cable lugs to DIN 46237
- Insulated pin cable lugs to DIN 46231

**General ordering data**

Type	VSTN/-6	Version	
Order No.	<a href="#">1494720000</a>		cable lug, terminal end,6 mm <sup>2</sup> ,6 mm <sup>2</sup>
GTIN (EAN)	4050118304190		
Qty.	100 pc(s).		