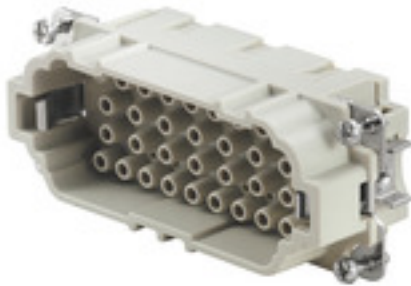


**HDC insert
HDC HEE 32 MC**

Weidmüller Interface GmbH & Co. KG
Klingenbergstraße 26
D-32758 Detmold
Germany
Fon: +49 5231 14-0
Fax: +49 5231 14-292083
www.weidmueller.com



The HEE series features high-density contacts and is designed on the basis of the established HE inserts. The wire connection level is designed for crimp contacts. The proven crimp connection method has been in standard use for decades. Crimp contacts are not included in the scope of delivery of inserts. Crimp connection

General ordering data

| | |
|------------|--|
| Type | HDC HEE 32 MC |
| Order No. | 1826790000 |
| Version | HDC insert, Pin, 500 V, 16 A, Number of poles: 32, Crimp connection, Size: 6 |
| GTIN (EAN) | 4032248330195 |
| Qty. | 1 pc(s). |

Creation date August 9, 2020 12:38:46 PM CEST

Catalogue status 24.07.2020 / We reserve the right to make technical changes.

**HDC insert
HDC HEE 32 MC**

Weidmüller Interface GmbH & Co. KG
Klingenbergstraße 26
D-32758 Detmold
Germany
Fon: +49 5231 14-0
Fax: +49 5231 14-292083
www.weidmueller.com

Technical data
Dimensions and weights

| | | | |
|------------|---------|-----------------|------------|
| Width | 34 | Width (inches) | 1.339 inch |
| Height | 33 mm | Height (inches) | 1.299 inch |
| Depth | 84.5 mm | Depth (inches) | 3.327 inch |
| Net weight | 56 g | | |

Temperatures

| | |
|-------------------|-------------------|
| Limit temperature | -40 °C ... 125 °C |
|-------------------|-------------------|

Environmental Product Compliance

| | |
|------------|--|
| REACH SVHC | Potassium perfluorobutane sulfonate 29420-49-3 |
|------------|--|

Dimensions

| | | | |
|----------------|-------|-------------------|---------|
| Height of plug | 33 mm | Total length base | 84.5 mm |
|----------------|-------|-------------------|---------|

General data

| | | | |
|------------------------------|-------------------|--------------------------------------|---|
| Conductor cross-section | 4 mm ² | Insulating material | PC glass-fibre reinforced (UL-listed and railway-certified) |
| Insulating material group | IIIa | Insulation strength | 10 ¹⁰ Ω |
| Number of poles | 32 | Plugging cycles, gold | ≥ 500 |
| Plugging cycles, silver | ≥ 500 | Pollution severity | 3 |
| Rated current (DIN EN 61984) | 16 A | Rated impulse voltage (DIN EN 61984) | 6 kV |
| Rated voltage (DIN EN 61984) | 500 V | Rated voltage according to UL/CSA | 600 V AC/DC |
| Series | HEE | Size | 6 |
| Type | Pin | UL 94 flammability rating | V-0 |
| Volume resistance | ≤ 2mΩ | | |

Connection data PE

| | | | |
|---|---------------------|---|---------------------|
| Blade size, crosshead | size PH 1 | Blade size, slotted (PE connection) | SD 0.8 x 4.0 |
| Connection type PE | Screw connection | Fixing screw | M 4 |
| Rated cross-section | 4 mm ² | Stripping length PE connection | 10 mm |
| Tightening torque, max. PE connection | 1.5 Nm | Tightening torque, min. PE connection | 1.2 Nm |
| Wire connection cross section, finely stranded, max. | 4 mm ² | Wire connection cross-section, finely stranded with wire-end ferrules DIN 46228/4, max. | 4 mm ² |
| Wire connection cross-section, finely stranded with wire-end ferrules DIN 46228/4, min. | 0.5 mm ² | Wire connection cross-section, finely stranded, min. | 0.5 mm ² |
| Wire cross section, AWG (PE), max. | AWG 12 | Wire cross section, AWG (PE), min. | AWG 20 |
| Wire cross-section, solid, max. | 4 mm ² | Wire cross-section, solid, min. | 0.5 mm ² |

HDC insert HDC HEE 32 MC

Weidmüller Interface GmbH & Co. KG
 Klingenbergstraße 26
 D-32758 Detmold
 Germany
 Fon: +49 5231 14-0
 Fax: +49 5231 14-292083
 www.weidmueller.com

Technical data

Version

| | | | |
|---|---------------------|---|---------------------|
| Conductor cross-section, max. | 4 mm ² | Conductor cross-section, min. | 0.5 mm ² |
| Size | 6 | Stripping length, rated connection | 7.5 mm |
| Type of connection | Crimp connection | Volume resistance | ≤ 2mΩ |
| Wire connection cross section AWG, max. | AWG 12 | Wire connection cross section AWG, min. | AWG 20 |
| Wire connection cross section, finely stranded, max. | 4 mm ² | Wire connection cross-section, finely stranded with wire-end ferrules DIN 46228/4, max. | 4 mm ² |
| Wire connection cross-section, finely stranded with wire-end ferrules DIN 46228/4, min. | 0.5 mm ² | Wire connection cross-section, finely stranded, min. | 0.5 mm ² |
| Wire cross-section, solid, max. | 4 mm ² | Wire cross-section, solid, min. | 0.5 mm ² |

Classifications

| | | | |
|-------------|-------------|------------|-------------|
| ETIM 6.0 | EC000438 | ETIM 7.0 | EC000438 |
| eClass 9.0 | 27-44-02-05 | eClass 9.1 | 27-44-02-05 |
| eClass 10.0 | 27-44-02-05 | UNSPSC | 30-21-18-01 |

Approvals

Approvals



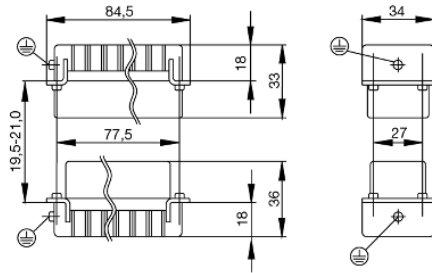
ROHS Conform

Downloads

| | |
|--------------------|---|
| Brochure/Catalogue | CAT 3 HDC 17/18 EN FL FIELDWIRING EN |
| Engineering Data | EPLAN, WSCAD, Zuken E3.S |
| Engineering Data | STEP |

Data sheet**HDC insert
HDC HEE 32 MC**

Weidmüller Interface GmbH & Co. KG
Klingenbergstraße 26
D-32758 Detmold
Germany
Fon: +49 5231 14-0
Fax: +49 5231 14-292083
www.weidmueller.com

Drawings

Tightening torques and screwing tools

| Screw size | Connector type | Dia. tightening torque in Nm | Recommended blade inserts and AF size for hexagon socket |
|---------------------------------------|---|---|--|
| M 2.5 | Signal contacts | | |
| | S 6/6 | 0.5 - 0.55 | SD 0.6 x 3.5 mm or PZ0 |
| | S 6/12 | 0.5 - 0.55 | SD 0.6 x 3.5 mm or PZ0 |
| M 2.9 x 0.5 | Fastening screws | | |
| | HQ 4/2 | 0.8 (plastic) / 1.1 (metal) | SD 0.6 x 3.5 mm or PH0 |
| | HQ 8 | 0.8 (plastic) / 1.1 (metal) | SD 0.6 x 3.5 mm or PH0 |
| | HQ 17 | 0.8 (plastic) / 1.1 (metal) | SD 0.6 x 3.5 mm or PH0 |
| M 3 | Contact screws | | |
| | HA 3 | 0.5 - 0.55 | SD 0.5 x 3.0 mm |
| | HA 4 | 0.5 - 0.55 | SD 0.5 x 3.0 mm |
| | HA 10 bis HA 48 | 0.5 - 0.55 | SD 0.6 x 3.5 mm or PH0 |
| | HE | 0.5 - 0.55 | SD 0.6 x 3.5 mm or PZ0 |
| | HVE | 0.5 - 0.55 | SD 0.6 x 3.5 mm or PZ0 |
| | Signal contacts: | | |
| | S 4/2 | 0.5 - 0.55 | SD 0.6 x 3.5 mm or PZ0 |
| | S 4/8 | 0.5 - 0.55 | SD 0.6 x 3.5 mm or PZ0 |
| | PE connection via female contact | | |
| | S 4 | 0.5 - 0.8 | SD 0.6 x 3.5 mm |
| | ConCept modular frame, metal | 0.5 - 0.55 | SD 0.6 x 3.5 mm |
| | PE terminal | | |
| | HQ 5 | 0.5 - 0.55 | SD 0.6 x 3.5 or 0.8 x 4 mm |
| | HQ 7 | 0.5 - 0.55 | SD 0.6 x 3.5 or 0.8 x 4 mm |
| | Fastening screws | 0.5 - 0.55 | SD 0.6 x 3.5 mm or PZ0 |
| | Guide pin | 0.5 - 0.55 | SD 0.6 x 3.5 mm or PZ0 |
| | Guide bush | 0.5 - 0.55 | SD 0.6 x 3.5 mm or PZ0 |
| | Coding pins | 0.5 - 0.55 | SD 0.6 x 3.5 mm or PZ0 |
| | M 4 | Contact screws | |
| HSB | | 1.2 - 1.5 | SD 0.6 x 3.5 or 0.8 x 4 mm or PZ1 |
| PE connection via male contact | | | |
| S 4 | | 0.5 - 0.8 | SD 0.6 x 3.5 mm |
| ConCept modular frame, metal | | 1.2 - 1.5 | SD 0.6 x 3.5 mm |
| PE terminal | | | |
| HA | | 1.2 - 1.5 | SD 0.6 x 3.5 or 0.8 x 4 mm or PH1 |
| HE | | 1.2 - 1.5 | SD 0.6 x 3.5 or 0.8 x 4 mm or PH1 |
| HEE | | 1.2 - 1.5 | SD 0.6 x 3.5 or 0.8 x 4 mm or PH1 |
| HVE | | 1.2 - 1.5 | SD 0.6 x 3.5 or 0.8 x 4 mm or PH1 |
| HD | | 1.2 - 1.5 | SD 0.6 x 3.5 or 0.8 x 4 mm or PZ1 |
| HDD | | 1.2 - 1.5 | SD 0.6 x 3.5 or 0.8 x 4 mm or PZ1 |
| S 6/6 (for signal contacts) | | 1.2 - 1.5 | 0.8 x 4 mm or PZ1 |
| ConCept modular frame, plastic | | 1.2 - 1.5 | 0.8 x 4 mm or PZ1 |
| M 5 | | PE terminal | |
| | HSB | 2 - 2.5 | SD 1 x 5.5 mm or PZ2 |
| | S 4/0 (Screw connection) | 2 - 2.5 | SD 1.2 x 6.5 mm or PH2 |
| | S 4/0 (Axial screw connection) | 2 - 2.5 | SD 0.8 x 4 mm or PZ 2 |
| | S 4/2 | 2 - 2.5 | SD 1.2 x 6.5 mm or PH2 |
| | S 4/8 | 2 - 2.5 | SD 1.2 x 6.5 mm or PH2 |
| | S 6/12 | 2 - 2.5 | SD 0.8 x 4 mm or PZ 2 |
| | S 6/36 | 2 - 2.5 | SD 1.2 x 6.5 mm or PH2 |
| | S 8/24 | 2 - 2.5 | SD 1.2 x 6.5 mm or PH2 |
| | S 12/2 | 2 - 2.5 | SD 1.2 x 6.5 mm or PH2 |
| | M 6 | Power contacts | |
| S 4/0 (Screw connection) | | 1.2 (1.5 mm ²) / 2 (2.5 mm ²) / 3 (4-16 mm ²) | SD 0.8 x 4 mm |
| S 4/2 | | 1.2 (1.5 mm ²) / 2 (2.5 mm ²) / 3 (4-16 mm ²) | SD 0.8 x 4 mm |
| S 4/8 | | 1.2 (1.5 mm ²) / 2 (2.5 mm ²) / 3 (4-16 mm ²) | SD 0.8 x 4 mm |
| M 7 x 0.75 | Power contacts | | |
| | S 4 | 1.1 - 1.7 | SW 2 |
| | S 6/6 (+ PE) | 6 - 8 | SW 4 |
| M 8 x 0.75 | Power contacts | | |
| | S 6/12 | 1.1 - 1.7 | SW 2 |
| | S 8/0 (+ PE) | 6 (10-16 mm ²) - 7 (25 mm ²) | SW 4 |
| M10 x 1 | Power contacts | | |
| | S 4/0 (Axial connection) | 2 - 3 | SW 3 |

Increasing the tightening torque does not improve the contact resistance. The stated torque settings offer optimal mechanical, thermal and electrical conditions. Exceeding the recommended values may even damage the conductor and terminal.