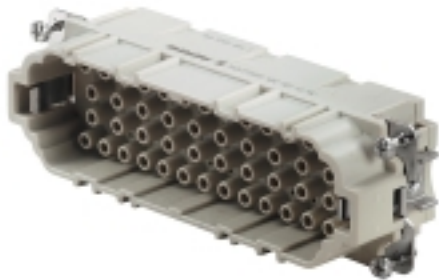


HDC insert HDC HEE 46 MC

Weidmüller Interface GmbH & Co. KG
 Klingenbergstraße 16
 D-32758 Detmold
 Germany
 Fon: +49 5231 1429-0
 Fax: +49 5231 14292083
 www.weidmueller.com



The HEE series features high-density contacts and is designed based on the established HE inserts.

The wire connection level is designed as a crimp contact. The established crimp connection has been used as a standard for decades. Crimp contacts are not delivered with the inserts.

Number of poles: **46**

Rated current: **16 A**

Rated voltage: **500 V**

Nominal voltage acc. to UL/CSA: **600 V AC/DC**

Crimp connection

General ordering data

| | |
|------------|--|
| Type | HDC HEE 46 MC |
| Order No. | 1826770000 |
| Version | HDC insert, Male, 500 V, 16 A, No. of poles: 46, Crimp connection, Size: 8 |
| GTIN (EAN) | 4032248330171 |
| Qty. | 1 pc(s). |

**HDC insert
HDC HEE 46 MC**

Weidmüller Interface GmbH & Co. KG
Klingenbergstraße 16
D-32758 Detmold
Germany
Fon: +49 5231 1429-0
Fax: +49 5231 14292083
www.weidmueller.com

Technical data
Dimensions and weights

| | | | |
|------------|--------|-----------------|------------|
| Length | 111 mm | Length (inches) | 4.37 inch |
| Width | 34 mm | Width (inches) | 1.339 inch |
| Height | 33 mm | Height (inches) | 1.299 inch |
| Net weight | 72 g | | |

Temperatures

| | |
|-------------------|-------------------|
| Limit temperature | -40 °C ... 125 °C |
|-------------------|-------------------|

Dimensions

| | | | |
|----------------|-------|-------------------|--------|
| Height of plug | 33 mm | Total length base | 111 mm |
|----------------|-------|-------------------|--------|

General data

| | | | |
|--------------------------------------|-------------------|------------------------------|---|
| Conductor cross-section | 4 mm ² | Insulating material | PC glass-fibre reinforced (UL-listed and railway-certified) |
| Insulating material group | IIIa | Insulation resistance | 10 ¹⁰ Ω |
| Material | Copper alloy | No. of poles | 46 |
| Plugging cycles, gold | ≥ 500 | Plugging cycles, silver | ≥ 500 |
| Pollution severity | 3 | Rated current (DIN EN 61984) | 16 A |
| Rated impulse voltage (DIN EN 61984) | 6 kV | Rated voltage (DIN EN 61984) | 500 V |
| Rated voltage according to UL/CSA | 600 V AC/DC | Series | HEE |
| Size | 8 | Surface finish | Silver passivated, gold |
| Type | Male | UL 94 flammability rating | V-0 |
| Volume resistance | ≤ 2mΩ | | |

Connection data PE

| | | | |
|---|-------------------|---|---------------------|
| Blade size, crosshead | size PH1 | Blade size, slotted (PE connection) | SD 0.8 x 4.0 |
| Connection type PE | | Cross-section for connected conductor, finely stranded with wire-end ferrules and plastic collars DIN 46228/4, rated connection, min. | 0.5 mm ² |
| | Screw connection | Rated cross-section | 4 mm ² |
| Fixing screw | M 4 | Tightening torque, max. PE connection | 1.5 Nm |
| Stripping length PE connection | 10 mm | Wire connection cross section, finely stranded, max. | 4 mm ² |
| Tightening torque, min. PE connection | 1.2 Nm | Wire connection cross-section, finely stranded, min. | |
| Wire connection cross-section, finely stranded with wire-end ferrules and plastic collars DIN 46228/4, rated connection, max. | 4 mm ² | | 0.5 mm ² |
| Wire cross section, AWG (PE), max. | AWG 12 | Wire cross section, AWG (PE), min. | AWG 20 |
| Wire cross-section, solid, max. | 4 mm ² | Wire cross-section, solid, min. | 0.5 mm ² |

**HDC insert
HDC HEE 46 MC**

Weidmüller Interface GmbH & Co. KG
 Klingenbergstraße 16
 D-32758 Detmold
 Germany
 Fon: +49 5231 1429-0
 Fax: +49 5231 14292083
 www.weidmueller.com

Technical data**Version**

| | | | |
|---|-------------------------|--|---------------------|
| Conductor cross-section, max. | 4 mm ² | Conductor cross-section, min. | 0.5 mm ² |
| Cross-section for connected conductor, finely stranded with wire-end ferrules and plastic collars DIN 46228/4, rated connection, min. | 0.5 mm ² | Material | Copper alloy |
| Size | 8 | Stripping length, rated connection | 7.5 mm |
| Surface finish | Silver passivated, gold | Type of connection | Crimp connection |
| Volume resistance | ≤ 2mΩ | Wire connection cross section AWG, max. | AWG 12 |
| Wire connection cross section AWG, min. | AWG 20 | Wire connection cross section, finely stranded, max. | 4 mm ² |
| Wire connection cross-section, finely stranded with wire-end ferrules and plastic collars DIN 46228/4, rated connection, max. | 4 mm ² | Wire connection cross-section, finely stranded, min. | 0.5 mm ² |
| Wire cross-section, solid, max. | 4 mm ² | Wire cross-section, solid, min. | 0.5 mm ² |

Classifications

| | | | |
|------------|-------------|------------|-------------|
| ETIM 3.0 | EC001121 | ETIM 4.0 | EC000438 |
| ETIM 5.0 | EC000438 | ETIM 6.0 | EC000438 |
| UNSPSC | 30-21-18-01 | eClass 5.1 | 27-14-34-19 |
| eClass 6.2 | 27-26-12-04 | eClass 7.1 | 27-44-02-05 |
| eClass 8.1 | 27-44-02-05 | eClass 9.0 | 27-44-02-05 |
| eClass 9.1 | 27-44-02-05 | | |

Product information

Descriptive text accessories Accessories, see chapter J - Tools, see chapter K

Approvals

Approvals



ROHS Conform

Downloads

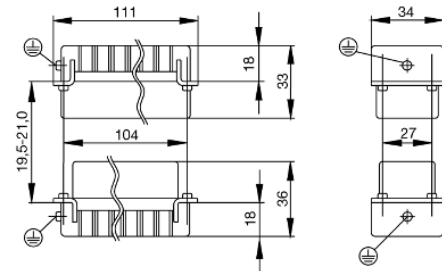
| | |
|--------------------|---|
| Brochure/Catalogue | CAT 3 HDC 17/18 EN FL FIELDWIRING EN |
| Engineering Data | EPLAN, WSCAD, Zuken E3.S |

Data sheet

**HDC insert
HDC HEE 46 MC**

Weidmüller Interface GmbH & Co. KG
Klingenbergstraße 16
D-32758 Detmold
Germany
Fon: +49 5231 1429-0
Fax: +49 5231 14292083
www.weidmueller.com

Drawings



Data sheet

**HDC insert
HDC HEE 46 MC**

Weidmüller Interface GmbH & Co. KG
 Klingenbergstraße 16
 D-32758 Detmold
 Germany
 Fon: +49 5231 1429-0
 Fax: +49 5231 14292083
 www.weidmueller.com

Accessories

Non-contact tools



Tools for dismantling Weidmüller crimp contacts

General ordering data

| Type | Order No. | Version | GTIN (EAN) | Qty. |
|--------------------|----------------------------|-----------------------------|---------------|----------|
| Removal Tool HE | 1866750000 | Tools, Contact removal tool | 4032248437078 | 1 pc(s). |

Slotted screwdriver

VDE insulated slot-head screwdriver, SDI DIN 7437, ISO 2380/2, drive output acc. to DIN 5264, ISO 2380/1. SoftFinish grip



General ordering data

| Type | Order No. | Version | GTIN (EAN) | Qty. |
|---------------------|----------------------------|--|---------------|----------|
| SDIS 0.6X3.5X100 | 9008390000 | Screwdriver, Blade width (B): 3.5 mm, Blade length: 100 mm, Blade thickness (A): 0.6 mm | 4032248056354 | 1 pc(s). |
| SDIS 0.8X4.0X100 | 9008400000 | Screwdriver, Blade width (B): 4 mm, Blade length: 100 mm, Blade thickness (A): 0.8 mm | 4032248056361 | 1 pc(s). |

Data sheet

**HDC insert
HDC HEE 46 MC**

Weidmüller Interface GmbH & Co. KG
 Klingenbergstraße 16
 D-32758 Detmold
 Germany
 Fon: +49 5231 1429-0
 Fax: +49 5231 14292083
 www.weidmueller.com

Accessories

Slotted screwdriver

Slotted screwdriver with rounded blade SD DIN 5265, ISO 2380/2, output to DIN 5264, ISO 2380/1. ChromTop tip, SoftFinish grip



General ordering data

| Type | Order No. | Version | GTIN (EAN) | Qty. |
|--------------------|----------------------------|--|---------------|----------|
| SDS 0.8X4.0X100 | 9008340000 | Screwdriver, Blade width (B): 4 mm, Blade length: 100 mm, Blade thickness (A): 0.8 mm | 4032248056293 | 1 pc(s). |

HE

Various accessories are available for our inserts. This includes coding elements for the inserts.



General ordering data

| Type | Order No. | Version | GTIN (EAN) | Qty. |
|-----------|----------------------------|---|---------------|------------|
| HDC HE CP | 1003240000 | Heavy Duty Connectors, Accessories, Coding System | 4032248698233 | 100 pc(s). |

**HDC insert
HDC HEE 46 MC**

Weidmüller Interface GmbH & Co. KG
 Klingenbergstraße 16
 D-32758 Detmold
 Germany
 Fon: +49 5231 1429-0
 Fax: +49 5231 14292083
 www.weidmueller.com

Accessories

Tools



Tools for removing the sheathing of uncut power cables and outgoing feeders, plus screwdrivers for installing FieldPower components.

General ordering data

| Type | Order No. | Version | GTIN (EAN) | Qty. |
|--------------------|----------------------------|--|---------------|----------|
| SDS 0.6X3.5X100 | 9008330000 | Screwdriver, Blade width (B): 3.5 mm, Blade length: 100 mm, Blade thickness (A): 0.6 mm | 4032248056286 | 1 pc(s). |

Crosshead screwdriver Phillips



Crosshead screwdriver, Phillips, SDK PH DIN 5262, ISO 8764/2-PH, output to ISO 8764-PH, ChromTop tip, SoftFinish grip

General ordering data

| Type | Order No. | Version | GTIN (EAN) | Qty. |
|---------|----------------------------|---|---------------|----------|
| SDK PH1 | 9008480000 | Screwdriver, Blade width (B): 4.5 mm, Blade length: 80 mm | 4032248056477 | 1 pc(s). |

**HDC insert
HDC HEE 46 MC**

Weidmüller Interface GmbH & Co. KG
 Klingenbergstraße 16
 D-32758 Detmold
 Germany
 Fon: +49 5231 1429-0
 Fax: +49 5231 14292083
 www.weidmueller.com

Accessories**Crimp contacts HE**

Crimps provide a electrical and mechanical connection between wire and contact that is both secure and reliable. The optimal crimp connection is gas-tight and corrosion-resistant.

General ordering data

| Type | Order No. | Version | GTIN (EAN) | Qty. |
|------------------------|----------------------------|--|---------------|------------|
| HDC-C-HE-SM1.5AU | 1651440000 | Heavy Duty Connectors, Crimp contact, HE, HEE, HQ, MixMate, Male, Conductor cross-section, max.: 1.5, turned, Copper alloy | 4008190400118 | 100 pc(s). |
| HDC-C-HE-SM0.5AU | 1651420000 | Heavy Duty Connectors, Crimp contact, HE, HEE, HQ, MixMate, Male, Conductor cross-section, max.: 0.5, turned, Copper alloy | 4008190400095 | 100 pc(s). |
| HDC-C-HE-SM4.0AG | 1200900000 | Heavy Duty Connectors, Crimp contact, HE, HEE, HQ, MixMate, Male, Conductor cross-section, max.: 4, turned, Copper alloy | 4008190115906 | 100 pc(s). |
| HDC-C-HE-SM2.5AU | 1651450000 | Heavy Duty Connectors, Crimp contact, HE, HEE, HQ, MixMate, Male, Conductor cross-section, max.: 2.5, turned, Copper alloy | 4008190400125 | 100 pc(s). |
| HDC-C-HE-SM0.5AG | 1200500000 | Heavy Duty Connectors, Crimp contact, HE, HEE, HQ, MixMate, Male, Conductor cross-section, max.: 0.5, turned, Copper alloy | 4008190159627 | 100 pc(s). |
| HDC-C-HE-SM4.0AU | 1651460000 | Heavy Duty Connectors, Crimp contact, HE, HEE, HQ, MixMate, Male, Conductor cross-section, max.: 4, turned, Copper alloy | 4008190400132 | 100 pc(s). |
| HDC-C-HE-SM0.75-1.00AG | 1200600000 | Heavy Duty Connectors, Crimp contact, HE, HEE, HQ, MixMate, Male, Conductor cross-section, | 4008190171308 | 100 pc(s). |

Creation date August 18, 2017 6:24:12 PM CEST

Catalogue status 11.08.2017 / We reserve the right to make technical changes.

**HDC insert
HDC HEE 46 MC**

Weidmüller Interface GmbH & Co. KG
Klingenbergstraße 16
D-32758 Detmold
Germany
Fon: +49 5231 1429-0
Fax: +49 5231 14292083
www.weidmueller.com

Accessories

| | | | |
|------------------------|----------------------------|---|---------------------------|
| | | max.: 1, turned, Copper alloy | |
| HDC-C-HE-SM4.65AU | 1116540000 | Heavy Duty Connectors, Crimp contact, HE, HEE, HQ, MixMate, Male, Conductor cross-section, max.: 4.65, turned, Copper alloy | 403224889726 1 100 pc(s). |
| HDC-C-HE-SM1.5AG | 1200700000 | Heavy Duty Connectors, Crimp contact, HE, HEE, HQ, MixMate, Male, Conductor cross-section, max.: 1.5, turned, Copper alloy | 4008190074920 100 pc(s). |
| HDC-C-HE-SM2.5AG | 1200800000 | Heavy Duty Connectors, Crimp contact, HE, HEE, HQ, MixMate, Male, Conductor cross-section, max.: 2.5, turned, Copper alloy | 4008190131913 100 pc(s). |
| HDC-C-HE-SM0.75-1.00AU | 1651430000 | Heavy Duty Connectors, Crimp contact, HE, HEE, HQ, MixMate, Male, Conductor cross-section, max.: 1, turned, Copper alloy | 4008190400101 100 pc(s). |

... for milled contacts



Crimping tools for turned contacts

- Ratchet guarantees precise crimping
- Release option in the event of incorrect operation
- With stop for exact positioning of the contacts.

General ordering data

| Type | Order No. | Version | GTIN (EAN) | Qty. |
|-----------------|----------------------------|--|---------------|----------|
| CTIN CM 1.6/2.5 | 9205430000 | Crimping tool, Crimping tool for contacts, 0.14mm ² , 6mm ² , 4-indent crimp | 4032248733446 | 1 pc(s). |
| CTX CM 1.6/2.5 | 9018490000 | Crimping tool, Crimping tool for contacts, 0.14mm ² , 4mm ² , W crimp | 4008190884598 | 1 pc(s). |

Data sheet**HDC insert
HDC HEE 46 MC**

Weidmüller Interface GmbH & Co. KG
Klingenbergstraße 16
D-32758 Detmold
Germany
Fon: +49 5231 1429-0
Fax: +49 5231 14292083
www.weidmueller.com

Accessories**Crosshead screwdriver Phillips**

VDE insulated crosshead screwdriver, for Phillips screws, SDIK PH DIN 7438, ISO 8764/2-PH, output to ISO 8764-PH, SoftFinish grip

**General ordering data**

| Type | Order No. | Version | GTIN (EAN) | Qty. |
|----------|----------------------------|-------------------------------------|---------------|----------|
| SDIK PH1 | 9008570000 | Screwdriver, Blade length: 80 mm | 4032248056569 | 1 pc(s). |

Tightening torques and screwing tools

| Screw size | Connector type | Dia. tightening torque in Nm | Recommended blade inserts and AF size for hexagon socket | |
|--------------------------------|---|---|--|-----------------------------------|
| M 2.5 | Signal contacts | | | |
| | S 6/6 | 0.5 - 0.55 | SD 0.6 x 3.5 mm or PZ0 | |
| | S 6/12 | 0.5 - 0.55 | SD 0.6 x 3.5 mm or PZ0 | |
| M 2.9 x 0.5 | Fastening screws | | | |
| | HQ 4/2 | 0.8 (plastic) / 1.1 (metal) | SD 0.6 x 3.5 mm or PH0 | |
| | HQ 8 | 0.8 (plastic) / 1.1 (metal) | SD 0.6 x 3.5 mm or PH0 | |
| | HQ 17 | 0.8 (plastic) / 1.1 (metal) | SD 0.6 x 3.5 mm or PH0 | |
| M 3 | Contact screws | | | |
| | HA 3 | 0.5 - 0.55 | SD 0.5 x 3.0 mm | |
| | HA 4 | 0.5 - 0.55 | SD 0.5 x 3.0 mm | |
| | HA 10 bis HA 48 | 0.5 - 0.55 | SD 0.6 x 3.5 mm or PH0 | |
| | HE | 0.5 - 0.55 | SD 0.6 x 3.5 mm or PZ0 | |
| | HVE | 0.5 - 0.55 | SD 0.6 x 3.5 mm or PZ0 | |
| | Signal contacts: | | | |
| | S 4/2 | 0.5 - 0.55 | SD 0.6 x 3.5 mm or PZ0 | |
| | S 4/8 | 0.5 - 0.55 | SD 0.6 x 3.5 mm or PZ0 | |
| | PE connection via female contact | | | |
| | S 4 | 0.5 - 0.8 | SD 0.6 x 3.5 mm | |
| | ConCept modular frame, metal | 0.5 - 0.55 | SD 0.6 x 3.5 mm | |
| | PE terminal | | | |
| | HQ 5 | 0.5 - 0.55 | SD 0.6 x 3.5 or 0.8 x 4 mm | |
| | HQ 7 | 0.5 - 0.55 | SD 0.6 x 3.5 or 0.8 x 4 mm | |
| | Fastening screws | 0.5 - 0.55 | SD 0.6 x 3.5 mm or PZ0 | |
| | Guide pin | 0.5 - 0.55 | SD 0.6 x 3.5 mm or PZ0 | |
| | Guide bush | 0.5 - 0.55 | SD 0.6 x 3.5 mm or PZ0 | |
| | Coding pins | 0.5 - 0.55 | SD 0.6 x 3.5 mm or PZ0 | |
| | M 4 | Contact screws | | |
| | | HSB | 1.2 - 1.5 | SD 0.6 x 3.5 or 0.8 x 4 mm or PZ1 |
| | | PE connection via male contact | | |
| S 4 | | 0.5 - 0.8 | SD 0.6 x 3.5 mm | |
| ConCept modular frame, metal | | 1.2 - 1.5 | SD 0.6 x 3.5 mm | |
| PE terminal | | | | |
| HA | | 1.2 - 1.5 | SD 0.6 x 3.5 or 0.8 x 4 mm or PH1 | |
| HE | | 1.2 - 1.5 | SD 0.6 x 3.5 or 0.8 x 4 mm or PH1 | |
| HEE | | 1.2 - 1.5 | SD 0.6 x 3.5 or 0.8 x 4 mm or PH1 | |
| HVE | | 1.2 - 1.5 | SD 0.6 x 3.5 or 0.8 x 4 mm or PH1 | |
| HD | | 1.2 - 1.5 | SD 0.6 x 3.5 or 0.8 x 4 mm or PZ1 | |
| HDD | | 1.2 - 1.5 | SD 0.6 x 3.5 or 0.8 x 4 mm or PZ1 | |
| S 6/6 (for signal contacts) | | 1.2 - 1.5 | 0.8 x 4 mm or PZ1 | |
| ConCept modular frame, plastic | | 1.2 - 1.5 | 0.8 x 4 mm or PZ1 | |
| M 5 | | PE terminal | | |
| | | HSB | 2 - 2.5 | SD 1 x 5.5 mm or PZ2 |
| | | S 4/0 (Screw connection) | 2 - 2.5 | SD 1.2 x 6.5 mm or PH2 |
| | S 4/0 (Axial screw connection) | 2 - 2.5 | SD 0.8 x 4 mm or PZ 2 | |
| | S 4/2 | 2 - 2.5 | SD 1.2 x 6.5 mm or PH2 | |
| | S 4/8 | 2 - 2.5 | SD 1.2 x 6.5 mm or PH2 | |
| | S 6/12 | 2 - 2.5 | SD 0.8 x 4 mm or PZ 2 | |
| | S 6/36 | 2 - 2.5 | SD 1.2 x 6.5 mm or PH2 | |
| | S 8/24 | 2 - 2.5 | SD 1.2 x 6.5 mm or PH2 | |
| | S 12/2 | 2 - 2.5 | SD 1.2 x 6.5 mm or PH2 | |
| | M 6 | Power contacts | | |
| S 4/0 (Screw connection) | | 1.2 (1.5 mm ²) / 2 (2.5 mm ²) / 3 (4-16 mm ²) | SD 0.8 x 4 mm | |
| S 4/2 | | 1.2 (1.5 mm ²) / 2 (2.5 mm ²) / 3 (4-16 mm ²) | SD 0.8 x 4 mm | |
| S 4/8 | | 1.2 (1.5 mm ²) / 2 (2.5 mm ²) / 3 (4-16 mm ²) | SD 0.8 x 4 mm | |
| M 7 x 0.75 | Power contacts | | | |
| | S 4 | 1.1 - 1.7 | SW 2 | |
| | S 6/6 (+ PE) | 6 - 8 | SW 4 | |
| M 8 x 0.75 | Power contacts | | | |
| | S 6/12 | 1.1 - 1.7 | SW 2 | |
| | S 8/0 (+ PE) | 6 (10-16 mm ²) - 7 (25 mm ²) | SW 4 | |
| M10 x 1 | Power contacts | | | |
| | S 4/0 (Axial connection) | 2 - 3 | SW 3 | |

Increasing the tightening torque does not improve the contact resistance. The stated torque settings offer optimal mechanical, thermal and electrical conditions. Exceeding the recommended values may even damage the conductor and terminal.