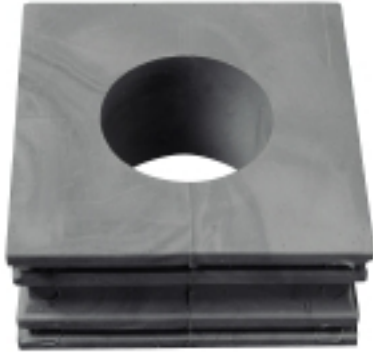


**Cabtite**  
**CABTITE KT 34**

**Weidmüller Interface GmbH & Co. KG**  
Klingenbergstraße 16  
D-32758 Detmold  
Germany  
Fon: +49 5231 14-0  
Fax: +49 5231 14-292083  
www.weidmueller.com



Cabtite enables you to feed pre-assembled lines through the electrical cabinet wall while maintaining IP54-level protection. As the cable does not have to be split, the manufacturer's guarantee is not invalidated.

**General ordering data**

Type	CABTITE KT 34
Order No.	<a href="#">1826450000</a>
Version	Cable grommet, large design, Cabtite, Plastic, Light Grey, Height: 42 mm, Width: 41.5 mm, Depth: 19 mm, 33.00 - 34.00 mm, -20 °C - 80 °C
GTIN (EAN)	4032248329274
Qty.	10 pc(s).

**Cabtite**  
**CABTITE KT 34**

**Weidmüller Interface GmbH & Co. KG**  
 Klingenbergstraße 16  
 D-32758 Detmold  
 Germany  
 Fon: +49 5231 14-0  
 Fax: +49 5231 14-292083  
 www.weidmueller.com

**Technical data****Dimensions and weights**

Width	41.5 mm	Width (inches)	1.634 inch
Height	42 mm	Height (inches)	1.654 inch
Depth	19 mm	Depth (inches)	0.748 inch
Net weight	15.6 g		

**General information**

Material	Plastic	Operating temperature range, max.	80 °C
Operating temperature range, min.	-20 °C	Outer cable diameter, max.	34 mm
Outer cable diameter, min.	33 mm		

**Classifications**

ETIM 3.0	EC000879	ETIM 4.0	EC000441
ETIM 5.0	EC000441	ETIM 6.0	EC000879
UNSPSC	30-21-18-01	eClass 5.1	27-14-92-01
eClass 6.2	27-14-92-01	eClass 7.1	27-14-92-01
eClass 8.1	27-14-92-01	eClass 9.0	27-14-44-38
eClass 9.1	27-14-44-21		

**Approvals**

ROHS	Conform
------	---------

**Downloads**

Brochure/Catalogue	<a href="#">CAT 5 ENCL 17/18 EN</a>
Engineering Data	<a href="#">EPLAN, WSCAD</a>