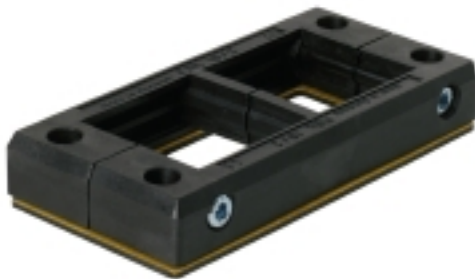


Cabtite
CABTITE KEL 16/2**Weidmüller Interface GmbH & Co. KG**
Klingenbergstraße 16
D-32758 Detmold
Germany
Fon: +49 5231 14-0
Fax: +49 5231 14-292083
www.weidmueller.com

Cabtite enables you to feed pre-assembled lines through the electrical cabinet wall while maintaining IP54-level protection. As the cable does not have to be split, the manufacturer's guarantee is not invalidated.

General ordering data

Type	CABTITE KEL 16/2
Order No.	1825860000
Version	Cable entry strips, Cabtite, Plastic, Black, Height: 58 mm, Width: 120 mm, Depth: 17 mm, -40 °C - 140 °C
GTIN (EAN)	4032248328581
Qty.	10 pc(s).

Data sheet

Cabtite CABTITE KEL 16/2

Weidmüller Interface GmbH & Co. KG
 Klingenbergstraße 16
 D-32758 Detmold
 Germany
 Fon: +49 5231 14-0
 Fax: +49 5231 14-292083
 www.weidmueller.com

Technical data

Dimensions and weights

Width	120 mm	Width (inches)	4.724 inch
Height	58 mm	Height (inches)	2.283 inch
Depth	17 mm	Depth (inches)	0.669 inch
Net weight	82.2 g		

General information

Material	Plastic	Operating temperature range, max.	140 °C
Operating temperature range, min.	-40 °C		

Classifications

ETIM 3.0	EC000441	ETIM 4.0	EC000441
ETIM 5.0	EC000441	ETIM 6.0	EC002624
UNSPSC	30-21-18-01	eClass 5.1	27-14-92-01
eClass 6.2	27-14-92-01	eClass 7.1	27-14-92-01
eClass 8.1	27-14-92-01	eClass 9.0	27-14-44-38
eClass 9.1	27-18-92-65		

Approvals

ROHS	Conform
------	---------

Downloads

Brochure/Catalogue	CAT 5 ENCL 17/18 EN
Engineering Data	EPLAN, WSCAD