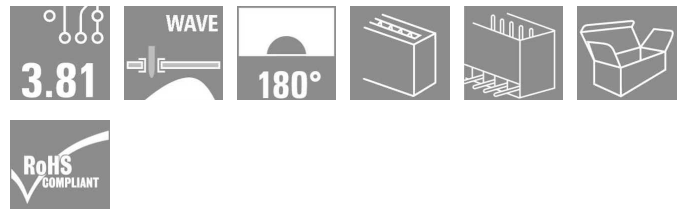


OMNIMATE Signal - series BC/SC 3.81 SC 3.81/02/180G 3.2SN BK BX

Weidmüller Interface GmbH & Co. KG
Klingenbergstraße 16
D-32758 Detmold
Germany
Fon: +49 5231 14-0
Fax: +49 5231 14-292083
www.weidmueller.com



The SC pin header has a perpendicular (standing) plugging direction in relation to the PCB. It is available in closed (G) and screw flange (F) versions.

Weidmüller's 3.81-mm-pitch (0.15 inch) plug-in connectors are compatible with the layouts of standard connectors and offer space for labelling and coding.

- 320 V (IEC) / 300 V (UL)
- 17.5 A (IEC) / 10 A (UL)

General ordering data

Type	SC 3.81/02/180G 3.2SN BK BX
Order No.	1793520000
Version	PCB plug-in connector, male header, closed side, Solder connection, 3.81 mm, No. of poles: 2, 180°, Solder pin length (l): 3.2 mm, tinned, Black, Box
GTIN (EAN)	4032248230433
Qty.	50 pc(s).
Product data	IEC: 320 V / 17.5 A UL: 300 V / 10 A
Packaging	Box

Creation date July 29, 2013 11:54:36 AM CEST

**OMNIMATE Signal - series BC/SC 3.81
SC 3.81/02/180G 3.2SN BK BX**

Weidmüller Interface GmbH & Co. KG
Klingenbergstraße 16
D-32758 Detmold
Germany
Fon: +49 5231 14-0
Fax: +49 5231 14-292083
www.weidmueller.com

Technical data
Dimensions and weights

Net weight 0.68 g

System parameters

Product family		Mounting onto the PCB	
Product family	OMNIMATE Signal - series BC/SC 3.81		Solder connection
Outgoing elbow	180°	Pitch in mm (P)	3.81 mm
Pitch in inches (P)	0.15 inch	No. of poles	2
Solder pin length (l)	3.2 mm	Pin dimensions	d = 1.0 mm, Octagonal
Can be coded	Yes	Number of solder pins per pole	1
Solder eyelet hole diameter (D)	1.2 mm	Solder eyelet hole diameter tolerance (D)	+ 0.1 mm
L1 in mm	3.81 mm	L1 in inches	0.15 inch
Insulation resistance	10 ⁶ Ω	Touch-safe protection acc. to DIN VDE 0470	IP 20
Touch-safe protection acc. to DIN VDE 57 106	Safe from finger touch		

Material data

Insulating material		Colour	
Insulating material	PA GF	Colour	Black
Insulating material group	II	UL 94 flammability rating	V-0
CTI	≥ 550	Contact material	Cu-Leg
Contact surface	tinned	Max. relative humidity during storage	93 %

DIN IEC rating data

Rated current, min. no. of poles (Tu=20°C)		Rated current, max. no. of poles (Tu=20°C)	
Rated current, min. no. of poles (Tu=20°C)	17.5 A	Rated current, max. no. of poles (Tu=20°C)	17.1 A
Rated current, number of poles (Tu=40°C), min	17.5 A	Rated current, number of poles (Tu=40°C), max.	17.1 A
Rated voltage for surge voltage class pollution degree III/3	160 V	Rated impulse voltage for surge voltage classcontamination degree III/3	2.5 kV
Rated voltage for surge voltage class pollution degree III/2	160 V	Rated impulse voltage for surge voltage classpollution degree III/2	2.5 kV
Rated voltage for surge voltage class pollution degree II/2	320 V	Rated impulse voltage for surge voltage classpollution degree II/2	2.5 kV
Short-time withstand current resistance	3 x 1s with 76 A		

CSA rating data

Rated voltage (Use group B)		Rated current (use group B)	
Rated voltage (Use group B)	300 V	Rated current (use group B)	10 A
Rated voltage (use group D)	300 V	Rated current (use group D)	10 A

UL 1059 rating data

Rated voltage (use group B)		Rated current (use group B)	
Rated voltage (use group B)	300 V	Rated current (use group B)	10 A
Rated voltage (use group D)	300 V	Rated current (use group D)	10 A

Classifications

ETIM 3.0		UNSPSC	
ETIM 3.0	EC001284	UNSPSC	30-21-18-10
eClass 4.1	27-26-07-01	eClass 5.1	27-26-07-04
eClass 6.2	27-26-07-04	eClass 7.1	27-44-04-02

Data sheet...**OMNIMATE Signal - series BC/SC 3.81
SC 3.81/02/180G 3.2SN BK BX**

Weidmüller Interface GmbH & Co. KG
Klingenbergstraße 16
D-32758 Detmold
Germany
Fon: +49 5231 14-0
Fax: +49 5231 14-292083
www.weidmueller.com

Technical data**Notes**

- Notes
- Additional colours on request
 - Gold-plated contact surfaces on request
 - Rated current related to rated cross-section & min. No. of poles.
 - Rated data refer only to the component itself. Clearance and creepage distances to other components are to be designed in accordance with the relevant application standards.
 - P on drawing = pitch

Approvals

Approvals

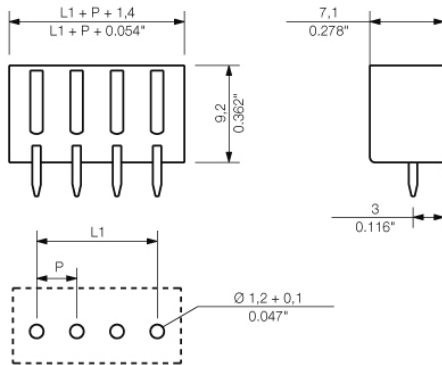


ROHS

Conform

**OMNIMATE Signal - series BC/SC 3.81
SC 3.81/02/180G 3.2SN BK BX**

Weidmüller Interface GmbH & Co. KG
Klingenbergstraße 16
D-32758 Detmold
Germany
Fon: +49 5231 14-0
Fax: +49 5231 14-292083
www.weidmueller.com

Drawings

OMNIMATE Signal - series BC/SC 3.81 SC 3.81/02/180G 3.2SN BK BX

Weidmüller Interface GmbH & Co. KG
Klingenbergstraße 16
D-32758 Detmold
Germany
Fon: +49 5231 14-0
Fax: +49 5231 14-292083
www.weidmueller.com

Mating connector (fully pluggable)

BCZ 3.81/270



Female socket connectors with clamping-yoke screw system for connecting wires.

Three wire-outlet directions are available and provide flexible connection-level design options:

- 180° wire parallel to plugging direction
- 90° wire perpendicular and above plugging direction
- 270° wire perpendicular and below plugging direction

There are three housing shapes, covering many different requirements, to choose from:

- Standard housing without flange
- Flange with screw (F)
- Flange featuring Weidmüller's patented release latch (LR) for lock-and-release latching with no strain and no tools needed.

Weidmüller's 3.81-mm-pitch (0.15 inch) plug-in connectors are compatible with the layouts of customary connectors and offer space for labelling and coding.

- 0.20 - 1.5 mm² (IEC) / 28 - 16 AWG (UL)
- 250 V (IEC) / 300 V (UL)
- 17.5 A (IEC) / 10 A (UL)

General ordering data

Type	Order No.	Version	GTIN (EAN)	Qty.	Product data	Packaging
BCZ 3.81/10/270 SN BK BX	1798980000	PCB plug-in connector, female plug, 3.81 mm, No. of poles: 10, 270°, Clamping yoke connection, Clamping range, rated connection, max.: 1.5 mm ² , Box	4032248243761	50 pc(s).	IEC: 320 V / 17.5 A / 0.2 - 1.5 mm ² UL: 300 V / 10 A / AWG 28 - AWG 16	Box
BCZ 3.81/10/270 SN GN BX	1799070000	PCB plug-in connector, female plug, 3.81 mm, No. of poles: 10, 270°, Clamping yoke connection, Clamping range, rated connection, max.: 1.5 mm ² , Box	4032248243969	50 pc(s).	IEC: 320 V / 17.5 A / 0.2 - 1.5 mm ² UL: 300 V / 10 A / AWG 28 - AWG 16	Box
BCZ 3.81/07/270 SN OR BX	1940240000	PCB plug-in connector, female plug, 3.81 mm, No. of poles: 7, 270°, Clamping yoke connection, Clamping range, rated connection, max.: 1.5 mm ² , Box	4032248656592	50 pc(s).	IEC: 320 V / 17.5 A / 0.2 - 1.5 mm ² UL: 300 V / 10 A / AWG 28 - AWG 16	Box
BCZ 3.81/03/270 SN GN BX	1799020000	PCB plug-in connector, female plug, 3.81 mm, No. of poles: 3, 270°, Clamping yoke connection, Clamping range, rated connection, max.: 1.5 mm ² , Box	4032248243914	50 pc(s).	IEC: 320 V / 17.5 A / 0.2 - 1.5 mm ² UL: 300 V / 10 A / AWG 28 - AWG 16	Box

**OMNIMATE Signal - series BC/SC 3.81
SC 3.81/02/180G 3.2SN BK BX**

Weidmüller Interface GmbH & Co. KG
Klingenbergstraße 16
D-32758 Detmold
Germany
Fon: +49 5231 14-0
Fax: +49 5231 14-292083
www.weidmueller.com

Mating connector (fully pluggable)

BCZ 3.81/09/270 SN OR BX	1940260000	PCB plug-in connector, female plug, 3.81 mm, No. of poles: 9, 270°, Clamping yoke connection, Clamping range, rated connection, max.: 1.5 mm ² , Box	4032248656578 50 pc(s).	IEC: 320 V / 17.5 A / 0.2 - 1.5 mm ² Box UL: 300 V / 10 A / AWG 28 - AWG 16
BCZ 3.81/15/270 SN BK BX	1940450000	PCB plug-in connector, female plug, 3.81 mm, No. of poles: 15, 270°, Clamping yoke connection, Clamping range, rated connection, max.: 1.5 mm ² , Box	4032248656387 50 pc(s).	IEC: 320 V / 17.5 A / 0.2 - 1.5 mm ² Box UL: 300 V / 10 A / AWG 28 - AWG 16
BCZ 3.81/08/270 SN BK BX	1798170000	PCB plug-in connector, female plug, 3.81 mm, No. of poles: 8, 270°, Clamping yoke connection, Clamping range, rated connection, max.: 1.5 mm ² , Box	4032248241361 50 pc(s).	IEC: 320 V / 17.5 A / 0.2 - 1.5 mm ² Box UL: 300 V / 10 A / AWG 28 - AWG 16
BCZ 3.81/07/270 SN BK BX	1940400000	PCB plug-in connector, female plug, 3.81 mm, No. of poles: 7, 270°, Clamping yoke connection, Clamping range, rated connection, max.: 1.5 mm ² , Box	4032248656431 50 pc(s).	IEC: 320 V / 17.5 A / 0.2 - 1.5 mm ² Box UL: 300 V / 10 A / AWG 28 - AWG 16
BCZ 3.81/08/270 SN GN BX	1799060000	PCB plug-in connector, female plug, 3.81 mm, No. of poles: 8, 270°, Clamping yoke connection, Clamping range, rated connection, max.: 1.5 mm ² , Box	4032248243952 50 pc(s).	IEC: 320 V / 17.5 A / 0.2 - 1.5 mm ² Box UL: 300 V / 10 A / AWG 28 - AWG 16
BCZ 3.81/09/270 SN BK BX	1940410000	PCB plug-in connector, female plug, 3.81 mm, No. of poles: 9, 270°, Clamping yoke connection, Clamping range, rated connection, max.: 1.5 mm ² , Box	4032248656424 50 pc(s).	IEC: 320 V / 17.5 A / 0.2 - 1.5 mm ² Box UL: 300 V / 10 A / AWG 28 - AWG 16
BCZ 3.81/12/270 SN GN BX	1799080000	PCB plug-in connector, female plug, 3.81 mm, No. of poles: 12, 270°, Clamping yoke connection, Clamping range, rated connection, max.: 1.5 mm ² , Box	4032248243976 50 pc(s).	IEC: 320 V / 17.5 A / 0.2 - 1.5 mm ² Box UL: 300 V / 10 A / AWG 28 - AWG 16
BCZ 3.81/02/270 SN GN BX	1799010000	PCB plug-in connector, female plug, 3.81 mm, No. of poles: 2, 270°, Clamping yoke connection, Clamping range, rated connection, max.: 1.5 mm ² , Box	4032248243808 50 pc(s).	IEC: 320 V / 17.5 A / 0.2 - 1.5 mm ² Box UL: 300 V / 10 A / AWG 28 - AWG 16
BCZ 3.81/08/270 SN OR BX	1940250000	PCB plug-in connector, female plug, 3.81 mm, No. of poles: 8, 270°, Clamping yoke connection, Clamping	4032248656585 50 pc(s).	IEC: 320 V / 17.5 A / 0.2 - 1.5 mm ² Box UL: 300 V / 10 A / AWG 28 - AWG 16

Creation date July 29, 2013 11:54:37 AM CEST

Catalogue status 08.07.2013 / We reserve the right to make technical changes.

**OMNIMATE Signal - series BC/SC 3.81
SC 3.81/02/180G 3.2SN BK BX**

Weidmüller Interface GmbH & Co. KG
Klingenbergstraße 16
D-32758 Detmold
Germany
Fon: +49 5231 14-0
Fax: +49 5231 14-292083
www.weidmueller.com

Mating connector (fully pluggable)

		range, rated connection, max.: 1.5 mm ² , Box		
BCZ 3.81/11/270 SN GN BX	1940360000	PCB plug-in connector, female plug, 3.81 mm, No. of poles: 11, 270°, Clamping yoke connection, Clamping range, rated connection, max.: 1.5 mm ² , Box	4032248656479 50 pc(s).	IEC: 320 V / 17.5 A / 0.2 - 1.5 mm ² Box UL: 300 V / 10 A / AWG 28 - AWG 16
BCZ 3.81/11/270 SN BK BX	1940420000	PCB plug-in connector, female plug, 3.81 mm, No. of poles: 11, 270°, Clamping yoke connection, Clamping range, rated connection, max.: 1.5 mm ² , Box	4032248656417 50 pc(s).	IEC: 320 V / 17.5 A / 0.2 - 1.5 mm ² Box UL: 300 V / 10 A / AWG 28 - AWG 16
BCZ 3.81/16/270 SN OR BX	1940330000	PCB plug-in connector, female plug, 3.81 mm, No. of poles: 16, 270°, Clamping yoke connection, Clamping range, rated connection, max.: 1.5 mm ² , Box	4032248656509 50 pc(s).	IEC: 320 V / 17.5 A / 0.2 - 1.5 mm ² Box UL: 300 V / 10 A / AWG 28 - AWG 16
BCZ 3.81/14/270 SN BK BX	1940440000	PCB plug-in connector, female plug, 3.81 mm, No. of poles: 14, 270°, Clamping yoke connection, Clamping range, rated connection, max.: 1.5 mm ² , Box	4032248656394 50 pc(s).	IEC: 320 V / 17.5 A / 0.2 - 1.5 mm ² Box UL: 300 V / 10 A / AWG 28 - AWG 16
BCZ 3.81/03/270 SN BK BX	1798160000	PCB plug-in connector, female plug, 3.81 mm, No. of poles: 3, 270°, Clamping yoke connection, Clamping range, rated connection, max.: 1.5 mm ² , Box	4032248241354 50 pc(s).	IEC: 320 V / 17.5 A / 0.2 - 1.5 mm ² Box UL: 300 V / 10 A / AWG 28 - AWG 16
BCZ 3.81/13/270 SN GN BX	1940370000	PCB plug-in connector, female plug, 3.81 mm, No. of poles: 13, 270°, Clamping yoke connection, Clamping range, rated connection, max.: 1.5 mm ² , Box	4032248656462 50 pc(s).	IEC: 320 V / 17.5 A / 0.2 - 1.5 mm ² Box UL: 300 V / 10 A / AWG 28 - AWG 16
BCZ 3.81/04/270 SN OR BX	1940210000	PCB plug-in connector, female plug, 3.81 mm, No. of poles: 4, 270°, Clamping yoke connection, Clamping range, rated connection, max.: 1.5 mm ² , Box	4032248656622 50 pc(s).	IEC: 320 V / 17.5 A / 0.2 - 1.5 mm ² Box UL: 300 V / 10 A / AWG 28 - AWG 16
BCZ 3.81/12/270 SN BK BX	1798990000	PCB plug-in connector, female plug, 3.81 mm, No. of poles: 12, 270°, Clamping yoke connection, Clamping range, rated	4032248243778 50 pc(s).	IEC: 320 V / 17.5 A / 0.2 - 1.5 mm ² Box UL: 300 V / 10 A / AWG 28 - AWG 16

**OMNIMATE Signal - series BC/SC 3.81
SC 3.81/02/180G 3.2SN BK BX**

Weidmüller Interface GmbH & Co. KG
Klingenbergstraße 16
D-32758 Detmold
Germany
Fon: +49 5231 14-0
Fax: +49 5231 14-292083
www.weidmueller.com

Mating connector (fully pluggable)

		connection, max.: 1.5 mm ² , Box	
BCZ 3.81/06/270 SN BK BX	1798970000	PCB plug-in connector, female plug, 3.81 mm, No. of poles: 6, 270°, Clamping yoke connection, Clamping range, rated connection, max.: 1.5 mm ² , Box	4032248243754 50 pc(s). IEC: 320 V / 17.5 A / 0.2 - 1.5 mm ² Box UL: 300 V / 10 A / AWG 28 - AWG 16
BCZ 3.81/06/270 SN OR BX	1940230000	PCB plug-in connector, female plug, 3.81 mm, No. of poles: 6, 270°, Clamping yoke connection, Clamping range, rated connection, max.: 1.5 mm ² , Box	4032248656608 50 pc(s). IEC: 320 V / 17.5 A / 0.2 - 1.5 mm ² Box UL: 300 V / 10 A / AWG 28 - AWG 16
BCZ 3.81/10/270 SN OR BX	1940270000	PCB plug-in connector, female plug, 3.81 mm, No. of poles: 10, 270°, Clamping yoke connection, Clamping range, rated connection, max.: 1.5 mm ² , Box	4032248656561 50 pc(s). IEC: 320 V / 17.5 A / 0.2 - 1.5 mm ² Box UL: 300 V / 10 A / AWG 28 - AWG 16
BCZ 3.81/13/270 SN BK BX	1940430000	PCB plug-in connector, female plug, 3.81 mm, No. of poles: 13, 270°, Clamping yoke connection, Clamping range, rated connection, max.: 1.5 mm ² , Box	4032248656400 50 pc(s). IEC: 320 V / 17.5 A / 0.2 - 1.5 mm ² Box UL: 300 V / 10 A / AWG 28 - AWG 16
BCZ 3.81/11/270 SN OR BX	1940280000	PCB plug-in connector, female plug, 3.81 mm, No. of poles: 11, 270°, Clamping yoke connection, Clamping range, rated connection, max.: 1.5 mm ² , Box	4032248656554 50 pc(s). IEC: 320 V / 17.5 A / 0.2 - 1.5 mm ² Box UL: 300 V / 10 A / AWG 28 - AWG 16
BCZ 3.81/05/270 SN OR BX	1940220000	PCB plug-in connector, female plug, 3.81 mm, No. of poles: 5, 270°, Clamping yoke connection, Clamping range, rated connection, max.: 1.5 mm ² , Box	4032248656615 50 pc(s). IEC: 320 V / 17.5 A / 0.2 - 1.5 mm ² Box UL: 300 V / 10 A / AWG 28 - AWG 16
BCZ 3.81/02/270 SN OR BX	1940190000	PCB plug-in connector, female plug, 3.81 mm, No. of poles: 2, 270°, Clamping yoke connection, Clamping range, rated connection, max.: 1.5 mm ² , Box	4032248656646 50 pc(s). IEC: 320 V / 17.5 A / 0.2 - 1.5 mm ² Box UL: 300 V / 10 A / AWG 28 - AWG 16
BCZ 3.81/14/270 SN OR BX	1940310000	PCB plug-in connector, female plug, 3.81 mm, No. of poles: 14, 270°, Clamping yoke connection, Clamping range, rated connection, max.: 1.5 mm ² , Box	4032248656523 50 pc(s). IEC: 320 V / 17.5 A / 0.2 - 1.5 mm ² Box UL: 300 V / 10 A / AWG 28 - AWG 16

**OMNIMATE Signal - series BC/SC 3.81
SC 3.81/02/180G 3.2SN BK BX**

Weidmüller Interface GmbH & Co. KG
Klingenbergstraße 16
D-32758 Detmold
Germany
Fon: +49 5231 14-0
Fax: +49 5231 14-292083
www.weidmueller.com

Mating connector (fully pluggable)

BCZ 3.81/05/270 SN GN BX	1799040000	PCB plug-in connector, female plug, 3.81 mm, No. of poles: 5, 270°, Clamping yoke connection, Clamping range, rated connection, max.: 1.5 mm ² , Box	4032248243938 50 pc(s).	IEC: 320 V / 17.5 A / 0.2 - 1.5 mm ² Box UL: 300 V / 10 A / AWG 28 - AWG 16
BCZ 3.81/04/270 SN GN BX	1799030000	PCB plug-in connector, female plug, 3.81 mm, No. of poles: 4, 270°, Clamping yoke connection, Clamping range, rated connection, max.: 1.5 mm ² , Box	4032248243921 50 pc(s).	IEC: 320 V / 17.5 A / 0.2 - 1.5 mm ² Box UL: 300 V / 10 A / AWG 28 - AWG 16
BCZ 3.81/15/270 SN OR BX	1940320000	PCB plug-in connector, female plug, 3.81 mm, No. of poles: 15, 270°, Clamping yoke connection, Clamping range, rated connection, max.: 1.5 mm ² , Box	4032248656516 50 pc(s).	IEC: 320 V / 17.5 A / 0.2 - 1.5 mm ² Box UL: 300 V / 10 A / AWG 28 - AWG 16
BCZ 3.81/16/270 SN GN BX	1799090000	PCB plug-in connector, female plug, 3.81 mm, No. of poles: 16, 270°, Clamping yoke connection, Clamping range, rated connection, max.: 1.5 mm ² , Box	4032248243983 50 pc(s).	IEC: 320 V / 17.5 A / 0.2 - 1.5 mm ² Box UL: 300 V / 10 A / AWG 28 - AWG 16
BCZ 3.81/09/270 SN GN BX	1940350000	PCB plug-in connector, female plug, 3.81 mm, No. of poles: 9, 270°, Clamping yoke connection, Clamping range, rated connection, max.: 1.5 mm ² , Box	4032248656486 50 pc(s).	IEC: 320 V / 17.5 A / 0.2 - 1.5 mm ² Box UL: 300 V / 10 A / AWG 28 - AWG 16
BCZ 3.81/06/270 SN GN BX	1799050000	PCB plug-in connector, female plug, 3.81 mm, No. of poles: 6, 270°, Clamping yoke connection, Clamping range, rated connection, max.: 1.5 mm ² , Box	4032248243945 50 pc(s).	IEC: 320 V / 17.5 A / 0.2 - 1.5 mm ² Box UL: 300 V / 10 A / AWG 28 - AWG 16
BCZ 3.81/14/270 SN GN BX	1940380000	PCB plug-in connector, female plug, 3.81 mm, No. of poles: 14, 270°, Clamping yoke connection, Clamping range, rated connection, max.: 1.5 mm ² , Box	4032248656455 50 pc(s).	IEC: 320 V / 17.5 A / 0.2 - 1.5 mm ² Box UL: 300 V / 10 A / AWG 28 - AWG 16
BCZ 3.81/03/270 SN OR BX	1940200000	PCB plug-in connector, female plug, 3.81 mm, No. of poles: 3, 270°, Clamping yoke connection, Clamping range, rated connection, max.: 1.5 mm ² , Box	4032248656639 50 pc(s).	IEC: 320 V / 17.5 A / 0.2 - 1.5 mm ² Box UL: 300 V / 10 A / AWG 28 - AWG 16
BCZ 3.81/16/270 SN BK BX	1799000000	PCB plug-in connector, female plug, 3.81 mm, No. of poles: 16, 270°, Clamping yoke connection,	4032248243792 50 pc(s).	IEC: 320 V / 17.5 A / 0.2 - 1.5 mm ² Box UL: 300 V / 10 A / AWG 28 - AWG 16

Creation date July 29, 2013 11:54:37 AM CEST

**OMNIMATE Signal - series BC/SC 3.81
SC 3.81/02/180G 3.2SN BK BX**

Weidmüller Interface GmbH & Co. KG
Klingenbergstraße 16
D-32758 Detmold
Germany
Fon: +49 5231 14-0
Fax: +49 5231 14-292083
www.weidmueller.com

Mating connector (fully pluggable)

		Clamping range, rated connection, max.: 1.5 mm ² , Box		
BCZ 3.81/12/270 SN OR BX	1940290000	PCB plug-in connector, female plug, 3.81 mm, No. of poles: 12, 270°, Clamping yoke connection, Clamping range, rated connection, max.: 1.5 mm ² , Box	4032248656547 50 pc(s).	IEC: 320 V / 17.5 A / 0.2 - 1.5 mm ² Box UL: 300 V / 10 A / AWG 28 - AWG 16
BCZ 3.81/07/270 SN GN BX	1940340000	PCB plug-in connector, female plug, 3.81 mm, No. of poles: 7, 270°, Clamping yoke connection, Clamping range, rated connection, max.: 1.5 mm ² , Box	4032248656493 50 pc(s).	IEC: 320 V / 17.5 A / 0.2 - 1.5 mm ² Box UL: 300 V / 10 A / AWG 28 - AWG 16
BCZ 3.81/04/270 SN BK BX	1798950000	PCB plug-in connector, female plug, 3.81 mm, No. of poles: 4, 270°, Clamping yoke connection, Clamping range, rated connection, max.: 1.5 mm ² , Box	4032248243730 50 pc(s).	IEC: 320 V / 17.5 A / 0.2 - 1.5 mm ² Box UL: 300 V / 10 A / AWG 28 - AWG 16
BCZ 3.81/05/270 SN BK BX	1798960000	PCB plug-in connector, female plug, 3.81 mm, No. of poles: 5, 270°, Clamping yoke connection, Clamping range, rated connection, max.: 1.5 mm ² , Box	4032248243747 50 pc(s).	IEC: 320 V / 17.5 A / 0.2 - 1.5 mm ² Box UL: 300 V / 10 A / AWG 28 - AWG 16
BCZ 3.81/02/270 SN BK BX	1798940000	PCB plug-in connector, female plug, 3.81 mm, No. of poles: 2, 270°, Clamping yoke connection, Clamping range, rated connection, max.: 1.5 mm ² , Box	4032248243723 50 pc(s).	IEC: 320 V / 17.5 A / 0.2 - 1.5 mm ² Box UL: 300 V / 10 A / AWG 28 - AWG 16
BCZ 3.81/15/270 SN GN BX	1940390000	PCB plug-in connector, female plug, 3.81 mm, No. of poles: 15, 270°, Clamping yoke connection, Clamping range, rated connection, max.: 1.5 mm ² , Box	4032248656448 50 pc(s).	IEC: 320 V / 17.5 A / 0.2 - 1.5 mm ² Box UL: 300 V / 10 A / AWG 28 - AWG 16
BCZ 3.81/13/270 SN OR BX	1940300000	PCB plug-in connector, female plug, 3.81 mm, No. of poles: 13, 270°, Clamping yoke connection, Clamping range, rated connection, max.: 1.5 mm ² , Box	4032248656530 50 pc(s).	IEC: 320 V / 17.5 A / 0.2 - 1.5 mm ² Box UL: 300 V / 10 A / AWG 28 - AWG 16

OMNIMATE Signal - series BC/SC 3.81 SC 3.81/02/180G 3.2SN BK BX

Weidmüller Interface GmbH & Co. KG
Klingenbergstraße 16
D-32758 Detmold
Germany
Fon: +49 5231 14-0
Fax: +49 5231 14-292083
www.weidmueller.com

Mating connector (fully pluggable)

BCZ 3.81/180



Female socket connectors with clamping-yoke screw system for connecting wires.

Three wire-outlet directions are available and provide flexible connection-level design options:

- 180° wire parallel to plugging direction
- 90° wire perpendicular and above plugging direction
- 270° wire perpendicular and below plugging direction

There are three housing shapes, covering many different requirements, to choose from:

- Standard housing without flange
- Flange with screw (F)
- Flange featuring Weidmüller's patented release latch (LR) for lock-and-release latching with no strain and no tools needed.

Weidmüller's 3.81-mm-pitch (0.15 inch) plug-in connectors are compatible with the layouts of customary connectors and offer space for labelling and coding.

- 0.20 - 1.5 mm² (IEC) / 28 - 16 AWG (UL)
- 250 V (IEC) / 300 V (UL)
- 17.5 A (IEC) / 10 A (UL)

General ordering data

Type	Order No.	Version	GTIN (EAN)	Qty.	Product data	Packaging
BCZ 3.81/15/180 SN OR BX	1940860000	PCB plug-in connector, female plug, 3.81 mm, No. of poles: 15, 180°, Clamping yoke connection, Clamping range, rated connection, max.: 1.5 mm ² , Box	4032248655977	50 pc(s).	IEC: 320 V / 17.5 A / 0.2 - 1.5 mm ² UL: 300 V / 10 A / AWG 28 - AWG 16	Box
BCZ 3.81/03/180 SN GN BX PRT	1807260000	PCB plug-in connector, female plug, 3.81 mm, No. of poles: 3, 180°, Clamping yoke connection, Clamping range, rated connection, max.: 1.5 mm ² , Box	4032248278275	50 pc(s).	IEC: 320 V / 17.5 A / 0.2 - 1.5 mm ² UL: 300 V / 10 A / AWG 28 - AWG 16	Box
BCZ 3.81/11/180 SN GN BX	1899390000	PCB plug-in connector, female plug, 3.81 mm, No. of poles: 11, 180°, Clamping yoke connection, Clamping range, rated connection, max.: 1.5 mm ² , Box	4032248519293	50 pc(s).	IEC: 320 V / 17.5 A / 0.2 - 1.5 mm ² UL: 300 V / 10 A / AWG 28 - AWG 16	Box
BCZ 3.81/09/180 SN OR BX	1940800000	PCB plug-in connector, female plug, 3.81 mm, No. of poles: 9, 180°, Clamping yoke connection, Clamping range, rated connection, max.: 1.5 mm ² , Box	4032248656035	50 pc(s).	IEC: 320 V / 17.5 A / 0.2 - 1.5 mm ² UL: 300 V / 10 A / AWG 28 - AWG 16	Box

OMNIMATE Signal - series BC/SC 3.81
SC 3.81/02/180G 3.2SN BK BX

Weidmüller Interface GmbH & Co. KG
 Klingenbergstraße 16
 D-32758 Detmold
 Germany
 Fon: +49 5231 14-0
 Fax: +49 5231 14-292083
 www.weidmueller.com

Mating connector (fully pluggable)

BCZ 3.81/04/180 SN OR BX	1940750000	PCB plug-in connector, female plug, 3.81 mm, No. of poles: 4, 180°, Clamping yoke connection, Clamping range, rated connection, max.: 1.5 mm ² , Box	4032248656080 50 pc(s).	IEC: 320 V / 17.5 A / 0.2 - 1.5 mm ² Box UL: 300 V / 10 A / AWG 28 - AWG 16
BCZ 3.81/17/180 SN OR BX	1940880000	PCB plug-in connector, female plug, 3.81 mm, No. of poles: 17, 180°, Clamping yoke connection, Clamping range, rated connection, max.: 1.5 mm ² , Box	50 pc(s).	IEC: 320 V / 17.5 A / 0.2 - 1.5 mm ² Box UL: 300 V / 10 A / AWG 28 - AWG 16
BCZ 3.81/05/180 SN BK BX PRT	1965640000	PCB plug-in connector, female plug, 3.81 mm, No. of poles: 5, 180°, Clamping yoke connection, Clamping range, rated connection, max.: 1.5 mm ² , Box	4032248653515 50 pc(s).	IEC: 320 V / 17.5 A / 0.2 - 1.5 mm ² Box UL: 300 V / 10 A / AWG 28 - AWG 16
BCZ 3.81/07/180 SN OR BX	1940780000	PCB plug-in connector, female plug, 3.81 mm, No. of poles: 7, 180°, Clamping yoke connection, Clamping range, rated connection, max.: 1.5 mm ² , Box	4032248656059 50 pc(s).	IEC: 320 V / 17.5 A / 0.2 - 1.5 mm ² Box UL: 300 V / 10 A / AWG 28 - AWG 16
BCZ 3.81/03/180 SN GN BX	1792870000	PCB plug-in connector, female plug, 3.81 mm, No. of poles: 3, 180°, Clamping yoke connection, Clamping range, rated connection, max.: 1.5 mm ² , Box	4032248226955 50 pc(s).	IEC: 320 V / 17.5 A / 0.2 - 1.5 mm ² Box UL: 300 V / 10 A / AWG 28 - AWG 16
BCZ 3.81/06/180 SN BK BX	1792810000	PCB plug-in connector, female plug, 3.81 mm, No. of poles: 6, 180°, Clamping yoke connection, Clamping range, rated connection, max.: 1.5 mm ² , Box	4032248226795 50 pc(s).	IEC: 320 V / 17.5 A / 0.2 - 1.5 mm ² Box UL: 300 V / 10 A / AWG 28 - AWG 16
BCZ 3.81/04/180 SN GN BX	1792880000	PCB plug-in connector, female plug, 3.81 mm, No. of poles: 4, 180°, Clamping yoke connection, Clamping range, rated connection, max.: 1.5 mm ² , Box	4032248226962 50 pc(s).	IEC: 320 V / 17.5 A / 0.2 - 1.5 mm ² Box UL: 300 V / 10 A / AWG 28 - AWG 16
BCZ 3.81/18/180 SN BK BX	1940980000	PCB plug-in connector, female plug, 3.81 mm, No. of poles: 18, 180°, Clamping yoke connection, Clamping range, rated connection, max.: 1.5 mm ² , Box	4032248655861 50 pc(s).	IEC: 320 V / 17.5 A / 0.2 - 1.5 mm ² Box UL: 300 V / 10 A / AWG 28 - AWG 16
BCZ 3.81/11/180 SN OR BX	1940820000	PCB plug-in connector, female plug, 3.81 mm, No. of poles: 11, 180°, Clamping yoke connection, Clamping range, rated	4032248656011 50 pc(s).	IEC: 320 V / 17.5 A / 0.2 - 1.5 mm ² Box UL: 300 V / 10 A / AWG 28 - AWG 16

Creation date July 29, 2013 11:54:37 AM CEST

**OMNIMATE Signal - series BC/SC 3.81
SC 3.81/02/180G 3.2SN BK BX**

Weidmüller Interface GmbH & Co. KG
Klingenbergstraße 16
D-32758 Detmold
Germany
Fon: +49 5231 14-0
Fax: +49 5231 14-292083
www.weidmueller.com

Mating connector (fully pluggable)

		connection, max.: 1.5 mm ² , Box	
BCZ 3.81/06/180 SN GN BX PRT	1848110000	PCB plug-in connector, female plug, 3.81 mm, No. of poles: 6, 180°, Clamping yoke connection, Clamping range, rated connection, max.: 1.5 mm ² , Box	4032248369096 150 pc(s). IEC: 320 V / 17.5 A / 0.2 - 1.5 mm ² Box UL: 300 V / 10 A / AWG 28 - AWG 16
BCZ 3.81/16/180 SN GN BX	1792940000	PCB plug-in connector, female plug, 3.81 mm, No. of poles: 16, 180°, Clamping yoke connection, Clamping range, rated connection, max.: 1.5 mm ² , Box	4032248227020 50 pc(s). IEC: 320 V / 17.5 A / 0.2 - 1.5 mm ² Box UL: 300 V / 10 A / AWG 28 - AWG 16
BCZ 3.81/12/180 SN BK BX	1792840000	PCB plug-in connector, female plug, 3.81 mm, No. of poles: 12, 180°, Clamping yoke connection, Clamping range, rated connection, max.: 1.5 mm ² , Box	4032248226924 50 pc(s). IEC: 320 V / 17.5 A / 0.2 - 1.5 mm ² Box UL: 300 V / 10 A / AWG 28 - AWG 16
BCZ 3.81/13/180 SN BK BX	1899440000	PCB plug-in connector, female plug, 3.81 mm, No. of poles: 13, 180°, Clamping yoke connection, Clamping range, rated connection, max.: 1.5 mm ² , Box	4032248519347 50 pc(s). IEC: 320 V / 17.5 A / 0.2 - 1.5 mm ² Box UL: 300 V / 10 A / AWG 28 - AWG 16
BCZ 3.81/15/180 SN GN BX	1899510000	PCB plug-in connector, female plug, 3.81 mm, No. of poles: 15, 180°, Clamping yoke connection, Clamping range, rated connection, max.: 1.5 mm ² , Box	4032248519415 50 pc(s). IEC: 320 V / 17.5 A / 0.2 - 1.5 mm ² Box UL: 300 V / 10 A / AWG 28 - AWG 16
BCZ 3.81/20/180 SN GN BX	1940960000	PCB plug-in connector, female plug, 3.81 mm, No. of poles: 20, 180°, Clamping yoke connection, Clamping range, rated connection, max.: 1.5 mm ² , Box	4032248655885 50 pc(s). IEC: 320 V / 17.5 A / 0.2 - 1.5 mm ² Box UL: 300 V / 10 A / AWG 28 - AWG 16
BCZ 3.81/06/180 SN GN BX PRT	1848120000	PCB plug-in connector, female plug, 3.81 mm, No. of poles: 6, 180°, Clamping yoke connection, Clamping range, rated connection, max.: 1.5 mm ² , Box	4032248369102 150 pc(s). IEC: 320 V / 17.5 A / 0.2 - 1.5 mm ² Box UL: 300 V / 10 A / AWG 28 - AWG 16
BCZ 3.81/14/180 SN BK BX	1899480000	PCB plug-in connector, female plug, 3.81 mm, No. of poles: 14, 180°, Clamping yoke connection, Clamping range, rated	4032248519385 50 pc(s). IEC: 320 V / 17.5 A / 0.2 - 1.5 mm ² Box UL: 300 V / 10 A / AWG 28 - AWG 16

**OMNIMATE Signal - series BC/SC 3.81
SC 3.81/02/180G 3.2SN BK BX**

Weidmüller Interface GmbH & Co. KG
Klingenbergstraße 16
D-32758 Detmold
Germany
Fon: +49 5231 14-0
Fax: +49 5231 14-292083
www.weidmueller.com

Mating connector (fully pluggable)

		connection, max.: 1.5 mm ² , Box	
BCZ 3.81/14/180 SN OR BX	1940850000	PCB plug-in connector, female plug, 3.81 mm, No. of poles: 14, 180°, Clamping yoke connection, Clamping range, rated connection, max.: 1.5 mm ² , Box	4032248655984 50 pc(s). IEC: 320 V / 17.5 A / 0.2 - 1.5 mm ² Box UL: 300 V / 10 A / AWG 28 - AWG 16
BCZ 3.81/08/180 SN GN BX	1792910000	PCB plug-in connector, female plug, 3.81 mm, No. of poles: 8, 180°, Clamping yoke connection, Clamping range, rated connection, max.: 1.5 mm ² , Box	4032248226993 50 pc(s). IEC: 320 V / 17.5 A / 0.2 - 1.5 mm ² Box UL: 300 V / 10 A / AWG 28 - AWG 16
BCZ 3.81/20/180 SN BK BX	1941000000	PCB plug-in connector, female plug, 3.81 mm, No. of poles: 20, 180°, Clamping yoke connection, Clamping range, rated connection, max.: 1.5 mm ² , Box	4032248655847 50 pc(s). IEC: 320 V / 17.5 A / 0.2 - 1.5 mm ² Box UL: 300 V / 10 A / AWG 28 - AWG 16
BCZ 3.81/05/180 SN GN BX	1792890000	PCB plug-in connector, female plug, 3.81 mm, No. of poles: 5, 180°, Clamping yoke connection, Clamping range, rated connection, max.: 1.5 mm ² , Box	4032248226979 50 pc(s). IEC: 320 V / 17.5 A / 0.2 - 1.5 mm ² Box UL: 300 V / 10 A / AWG 28 - AWG 16
BCZ 3.81/18/180 SN GN BX	1940940000	PCB plug-in connector, female plug, 3.81 mm, No. of poles: 18, 180°, Clamping yoke connection, Clamping range, rated connection, max.: 1.5 mm ² , Box	4032248655908 50 pc(s). IEC: 320 V / 17.5 A / 0.2 - 1.5 mm ² Box UL: 300 V / 10 A / AWG 28 - AWG 16
BCZ 3.81/08/180 SN BK BX	1792820000	PCB plug-in connector, female plug, 3.81 mm, No. of poles: 8, 180°, Clamping yoke connection, Clamping range, rated connection, max.: 1.5 mm ² , Box	4032248226801 50 pc(s). IEC: 320 V / 17.5 A / 0.2 - 1.5 mm ² Box UL: 300 V / 10 A / AWG 28 - AWG 16
BCZ 3.81/14/180 SN GN BX	1899470000	PCB plug-in connector, female plug, 3.81 mm, No. of poles: 14, 180°, Clamping yoke connection, Clamping range, rated connection, max.: 1.5 mm ² , Box	4032248519378 50 pc(s). IEC: 320 V / 17.5 A / 0.2 - 1.5 mm ² Box UL: 300 V / 10 A / AWG 28 - AWG 16
BCZ 3.81/06/180 SN GN BX	1792900000	PCB plug-in connector, female plug, 3.81 mm, No. of poles: 6, 180°, Clamping yoke connection, Clamping range, rated connection, max.: 1.5 mm ² , Box	4032248226986 50 pc(s). IEC: 320 V / 17.5 A / 0.2 - 1.5 mm ² Box UL: 300 V / 10 A / AWG 28 - AWG 16

**OMNIMATE Signal - series BC/SC 3.81
SC 3.81/02/180G 3.2SN BK BX**

Weidmüller Interface GmbH & Co. KG
Klingenbergstraße 16
D-32758 Detmold
Germany
Fon: +49 5231 14-0
Fax: +49 5231 14-292083
www.weidmueller.com

Mating connector (fully pluggable)

BCZ 3.81/16/180 SN OR BX	1940870000	PCB plug-in connector, female plug, 3.81 mm, No. of poles: 16, 180°, Clamping yoke connection, Clamping range, rated connection, max.: 1.5 mm ² , Box	4032248655960 50 pc(s).	IEC: 320 V / 17.5 A / 0.2 - 1.5 mm ² Box UL: 300 V / 10 A / AWG 28 - AWG 16
BCZ 3.81/06/180 SN GN BX PRT	1827040000	PCB plug-in connector, female plug, 3.81 mm, No. of poles: 6, 180°, Clamping yoke connection, Clamping range, rated connection, max.: 1.5 mm ² , Box	4032248331970 150 pc(s).	IEC: 320 V / 17.5 A / 0.2 - 1.5 mm ² Box UL: 300 V / 10 A / AWG 28 - AWG 16
BCZ 3.81/06/180 SN OR BX	1940770000	PCB plug-in connector, female plug, 3.81 mm, No. of poles: 6, 180°, Clamping yoke connection, Clamping range, rated connection, max.: 1.5 mm ² , Box	4032248656066 50 pc(s).	IEC: 320 V / 17.5 A / 0.2 - 1.5 mm ² Box UL: 300 V / 10 A / AWG 28 - AWG 16
BCZ 3.81/19/180 SN BK BX	1940990000	PCB plug-in connector, female plug, 3.81 mm, No. of poles: 19, 180°, Clamping yoke connection, Clamping range, rated connection, max.: 1.5 mm ² , Box	4032248655854 50 pc(s).	IEC: 320 V / 17.5 A / 0.2 - 1.5 mm ² Box UL: 300 V / 10 A / AWG 28 - AWG 16
BCZ 3.81/03/180 SN BK BX	1792780000	PCB plug-in connector, female plug, 3.81 mm, No. of poles: 3, 180°, Clamping yoke connection, Clamping range, rated connection, max.: 1.5 mm ² , Box	4032248226764 50 pc(s).	IEC: 320 V / 17.5 A / 0.2 - 1.5 mm ² Box UL: 300 V / 10 A / AWG 28 - AWG 16
BCZ 3.81/10/180 SN OR BX	1940810000	PCB plug-in connector, female plug, 3.81 mm, No. of poles: 10, 180°, Clamping yoke connection, Clamping range, rated connection, max.: 1.5 mm ² , Box	4032248656028 50 pc(s).	IEC: 320 V / 17.5 A / 0.2 - 1.5 mm ² Box UL: 300 V / 10 A / AWG 28 - AWG 16
BCZ 3.81/13/180 SN GN BX	1899430000	PCB plug-in connector, female plug, 3.81 mm, No. of poles: 13, 180°, Clamping yoke connection, Clamping range, rated connection, max.: 1.5 mm ² , Box	4032248519330 50 pc(s).	IEC: 320 V / 17.5 A / 0.2 - 1.5 mm ² Box UL: 300 V / 10 A / AWG 28 - AWG 16
BCZ 3.81/02/180 SN OR BX	1940730000	PCB plug-in connector, female plug, 3.81 mm, No. of poles: 2, 180°, Clamping yoke connection, Clamping range, rated connection, max.: 1.5 mm ² , Box	4032248656103 50 pc(s).	IEC: 320 V / 17.5 A / 0.2 - 1.5 mm ² Box UL: 300 V / 10 A / AWG 28 - AWG 16
BCZ 3.81/13/180 SN OR BX	1940840000	PCB plug-in connector, female plug, 3.81 mm, No. of poles: 13, 180°,	4032248655991 50 pc(s).	IEC: 320 V / 17.5 A / 0.2 - 1.5 mm ² Box UL: 300 V / 10 A / AWG 28 - AWG 16

Creation date July 29, 2013 11:54:37 AM CEST

**OMNIMATE Signal - series BC/SC 3.81
SC 3.81/02/180G 3.2SN BK BX**

Weidmüller Interface GmbH & Co. KG
Klingenbergstraße 16
D-32758 Detmold
Germany
Fon: +49 5231 14-0
Fax: +49 5231 14-292083
www.weidmueller.com

Mating connector (fully pluggable)

		Clamping yoke connection, Clamping range, rated connection, max.: 1.5 mm ² , Box		
BCZ 3.81/05/180 SN OR BX	1940760000	PCB plug-in connector, female plug, 3.81 mm, No. of poles: 5, 180°, Clamping yoke connection, Clamping range, rated connection, max.: 1.5 mm ² , Box	4032248656073 50 pc(s).	IEC: 320 V / 17.5 A / 0.2 - 1.5 mm ² Box UL: 300 V / 10 A / AWG 28 - AWG 16
BCZ 3.81/04/180 SN GN BX PRT	1807270000	PCB plug-in connector, female plug, 3.81 mm, No. of poles: 4, 180°, Clamping yoke connection, Clamping range, rated connection, max.: 1.5 mm ² , Box	4032248278282 180 pc(s).	IEC: 320 V / 17.5 A / 0.2 - 1.5 mm ² Box UL: 300 V / 10 A / AWG 28 - AWG 16
BCZ 3.81/09/180 SN BK BX	1871390000	PCB plug-in connector, female plug, 3.81 mm, No. of poles: 9, 180°, Clamping yoke connection, Clamping range, rated connection, max.: 1.5 mm ² , Box	4032248449996 50 pc(s).	IEC: 320 V / 17.5 A / 0.2 - 1.5 mm ² Box UL: 300 V / 10 A / AWG 28 - AWG 16
BCZ 3.81/08/180 SN GN BX PRT	1848130000	PCB plug-in connector, female plug, 3.81 mm, No. of poles: 8, 180°, Clamping yoke connection, Clamping range, rated connection, max.: 1.5 mm ² , Box	4032248369416 100 pc(s).	IEC: 320 V / 17.5 A / 0.2 - 1.5 mm ² Box UL: 300 V / 10 A / AWG 28 - AWG 16
BCZ 3.81/05/180 SN BK BX	1792800000	PCB plug-in connector, female plug, 3.81 mm, No. of poles: 5, 180°, Clamping yoke connection, Clamping range, rated connection, max.: 1.5 mm ² , Box	4032248226788 50 pc(s).	IEC: 320 V / 17.5 A / 0.2 - 1.5 mm ² Box UL: 300 V / 10 A / AWG 28 - AWG 16
BCZ 3.81/07/180 SN BK BX	1871410000	PCB plug-in connector, female plug, 3.81 mm, No. of poles: 7, 180°, Clamping yoke connection, Clamping range, rated connection, max.: 1.5 mm ² , Box	4032248450213 50 pc(s).	IEC: 320 V / 17.5 A / 0.2 - 1.5 mm ² Box UL: 300 V / 10 A / AWG 28 - AWG 16
BCZ 3.81/19/180 SN OR BX	1940910000	PCB plug-in connector, female plug, 3.81 mm, No. of poles: 19, 180°, Clamping yoke connection, Clamping range, rated connection, max.: 1.5 mm ² , Box	4032248655939 50 pc(s).	IEC: 320 V / 17.5 A / 0.2 - 1.5 mm ² Box UL: 300 V / 10 A / AWG 28 - AWG 16
BCZ 3.81/05/180 SN GN BX PRT	1142050000	PCB plug-in connector, female plug, 3.81 mm, No. of poles: 5, 180°, Clamping yoke connection, Clamping range, rated connection, max.: 1.5 mm ² , Box	4032248924943 50 pc(s).	IEC: 320 V / 17.5 A / 0.2 - 1.5 mm ² Box UL: 300 V / 10 A / AWG 28 - AWG 16

**OMNIMATE Signal - series BC/SC 3.81
SC 3.81/02/180G 3.2SN BK BX**

Weidmüller Interface GmbH & Co. KG
Klingenbergstraße 16
D-32758 Detmold
Germany
Fon: +49 5231 14-0
Fax: +49 5231 14-292083
www.weidmueller.com

Mating connector (fully pluggable)

BCZ 3.81/09/180 SN GN BX	1871380000	PCB plug-in connector, female plug, 3.81 mm, No. of poles: 9, 180°, Clamping yoke connection, Clamping range, rated connection, max.: 1.5 mm ² , Box	4032248449989 50 pc(s).	IEC: 320 V / 17.5 A / 0.2 - 1.5 mm ² Box UL: 300 V / 10 A / AWG 28 - AWG 16
BCZ 3.81/04/180 SN BK BX PRT	1077880000	PCB plug-in connector, female plug, 3.81 mm, No. of poles: 4, 180°, Clamping yoke connection, Clamping range, rated connection, max.: 1.5 mm ² , Box	4032248837519 50 pc(s).	IEC: 320 V / 17.5 A / 0.2 - 1.5 mm ² Box UL: 300 V / 10 A / AWG 28 - AWG 16
BCZ 3.81/06/180 SN GN BX PRT	1827050000	PCB plug-in connector, female plug, 3.81 mm, No. of poles: 6, 180°, Clamping yoke connection, Clamping range, rated connection, max.: 1.5 mm ² , Box	4032248331987 150 pc(s).	IEC: 320 V / 17.5 A / 0.2 - 1.5 mm ² Box UL: 300 V / 10 A / AWG 28 - AWG 16
BCZ 3.81/08/180 SN OR BX	1940790000	PCB plug-in connector, female plug, 3.81 mm, No. of poles: 8, 180°, Clamping yoke connection, Clamping range, rated connection, max.: 1.5 mm ² , Box	4032248656042 50 pc(s).	IEC: 320 V / 17.5 A / 0.2 - 1.5 mm ² Box UL: 300 V / 10 A / AWG 28 - AWG 16
BCZ 3.81/10/180 SN BK BX	1792830000	PCB plug-in connector, female plug, 3.81 mm, No. of poles: 10, 180°, Clamping yoke connection, Clamping range, rated connection, max.: 1.5 mm ² , Box	4032248226917 50 pc(s).	IEC: 320 V / 17.5 A / 0.2 - 1.5 mm ² Box UL: 300 V / 10 A / AWG 28 - AWG 16
BCZ 3.81/04/180 SN GN BX PRT	1827030000	PCB plug-in connector, female plug, 3.81 mm, No. of poles: 4, 180°, Clamping yoke connection, Clamping range, rated connection, max.: 1.5 mm ² , Box	4032248331963 180 pc(s).	IEC: 320 V / 17.5 A / 0.2 - 1.5 mm ² Box UL: 300 V / 10 A / AWG 28 - AWG 16
BCZ 3.81/02/180 SN BK BX	1792770000	PCB plug-in connector, female plug, 3.81 mm, No. of poles: 2, 180°, Clamping yoke connection, Clamping range, rated connection, max.: 1.5 mm ² , Box	4032248226757 50 pc(s).	IEC: 320 V / 17.5 A / 0.2 - 1.5 mm ² Box UL: 300 V / 10 A / AWG 28 - AWG 16
BCZ 3.81/03/180 SN OR BX	1940740000	PCB plug-in connector, female plug, 3.81 mm, No. of poles: 3, 180°, Clamping yoke connection, Clamping range, rated connection, max.: 1.5 mm ² , Box	4032248656097 50 pc(s).	IEC: 320 V / 17.5 A / 0.2 - 1.5 mm ² Box UL: 300 V / 10 A / AWG 28 - AWG 16
BCZ 3.81/04/180 SN OR BX PRT	1045720000	PCB plug-in connector, female plug, 3.81 mm, No. of poles: 4, 180°, Clamping yoke connection, Clamping range, rated connection, max.: 1.5 mm ² , Box	4032248779550 50 pc(s).	IEC: 320 V / 17.5 A / 0.2 - 1.5 mm ² Box UL: 300 V / 10 A / AWG 28 - AWG 16

Creation date July 29, 2013 11:54:37 AM CEST

**OMNIMATE Signal - series BC/SC 3.81
SC 3.81/02/180G 3.2SN BK BX**

Weidmüller Interface GmbH & Co. KG
Klingenbergstraße 16
D-32758 Detmold
Germany
Fon: +49 5231 14-0
Fax: +49 5231 14-292083
www.weidmueller.com

Mating connector (fully pluggable)

BCZ 3.81/02/180 SN GN BX	1792860000	PCB plug-in connector, female plug, 3.81 mm, No. of poles: 2, 180°, Clamping yoke connection, Clamping range, rated connection, max.: 1.5 mm ² , Box	4032248226948 50 pc(s).	IEC: 320 V / 17.5 A / 0.2 - 1.5 mm ² Box UL: 300 V / 10 A / AWG 28 - AWG 16
BCZ 3.81/04/180 SN OR BX PRT	1094960000	PCB plug-in connector, female plug, 3.81 mm, No. of poles: 4, 180°, Clamping yoke connection, Clamping range, rated connection, max.: 1.5 mm ² , Box	4032248866854 50 pc(s).	IEC: 320 V / 17.5 A / 0.2 - 1.5 mm ² Box UL: 300 V / 10 A / AWG 28 - AWG 16
BCZ 3.81/08/180 SN GN BX PRT	1827060000	PCB plug-in connector, female plug, 3.81 mm, No. of poles: 8, 180°, Clamping yoke connection, Clamping range, rated connection, max.: 1.5 mm ² , Box	4032248331994 100 pc(s).	IEC: 320 V / 17.5 A / 0.2 - 1.5 mm ² Box UL: 300 V / 10 A / AWG 28 - AWG 16
BCZ 3.81/04/180 SN OR BX PRT	1094950000	PCB plug-in connector, female plug, 3.81 mm, No. of poles: 4, 180°, Clamping yoke connection, Clamping range, rated connection, max.: 1.5 mm ² , Box	4032248867738 50 pc(s).	IEC: 320 V / 17.5 A / 0.2 - 1.5 mm ² Box UL: 300 V / 10 A / AWG 28 - AWG 16
BCZ 3.81/08/180 SN GN BX PRT	1142060000	PCB plug-in connector, female plug, 3.81 mm, No. of poles: 8, 180°, Clamping yoke connection, Clamping range, rated connection, max.: 1.5 mm ² , Box	4032248924882 50 pc(s).	IEC: 320 V / 17.5 A / 0.2 - 1.5 mm ² Box UL: 300 V / 10 A / AWG 28 - AWG 16
BCZ 3.81/04/180 SN BK BX	1792790000	PCB plug-in connector, female plug, 3.81 mm, No. of poles: 4, 180°, Clamping yoke connection, Clamping range, rated connection, max.: 1.5 mm ² , Box	4032248226771 50 pc(s).	IEC: 320 V / 17.5 A / 0.2 - 1.5 mm ² Box UL: 300 V / 10 A / AWG 28 - AWG 16
BCZ 3.81/07/180 SN GN BX	1871400000	PCB plug-in connector, female plug, 3.81 mm, No. of poles: 7, 180°, Clamping yoke connection, Clamping range, rated connection, max.: 1.5 mm ² , Box	4032248450008 50 pc(s).	IEC: 320 V / 17.5 A / 0.2 - 1.5 mm ² Box UL: 300 V / 10 A / AWG 28 - AWG 16
BCZ 3.81/08/180 SN TGY BX SO	1021630000	PCB plug-in connector, female plug, 3.81 mm, No. of poles: 8, 180°, Clamping yoke connection, Clamping range, rated connection, max.: 1.5 mm ² , Box	4032248775927 50 pc(s).	IEC: 320 V / 17.5 A / 0.2 - 1.5 mm ² Box UL: 300 V / 10 A / AWG 28 - AWG 16
BCZ 3.81/04/180 SN GN BX PRT	1859170000	PCB plug-in connector, female plug, 3.81 mm, No. of poles: 4, 180°, Clamping yoke connection, Clamping range, rated connection, max.: 1.5 mm ² , Box	4032248411610 180 pc(s).	IEC: 320 V / 17.5 A / 0.2 - 1.5 mm ² Box UL: 300 V / 10 A / AWG 28 - AWG 16

**OMNIMATE Signal - series BC/SC 3.81
SC 3.81/02/180G 3.2SN BK BX**

Weidmüller Interface GmbH & Co. KG
Klingenbergstraße 16
D-32758 Detmold
Germany
Fon: +49 5231 14-0
Fax: +49 5231 14-292083
www.weidmueller.com

Mating connector (fully pluggable)

BCZ 3.81/18/180 SN OR BX	1940900000	PCB plug-in connector, female plug, 3.81 mm, No. of poles: 18, 180°, Clamping yoke connection, Clamping range, rated connection, max.: 1.5 mm ² , Box	4032248655946 50 pc(s).	IEC: 320 V / 17.5 A / 0.2 - 1.5 mm ² Box UL: 300 V / 10 A / AWG 28 - AWG 16
BCZ 3.81/12/180 SN OR BX	1940830000	PCB plug-in connector, female plug, 3.81 mm, No. of poles: 12, 180°, Clamping yoke connection, Clamping range, rated connection, max.: 1.5 mm ² , Box	4032248656004 50 pc(s).	IEC: 320 V / 17.5 A / 0.2 - 1.5 mm ² Box UL: 300 V / 10 A / AWG 28 - AWG 16
BCZ 3.81/16/180 SN BK BX	1792850000	PCB plug-in connector, female plug, 3.81 mm, No. of poles: 16, 180°, Clamping yoke connection, Clamping range, rated connection, max.: 1.5 mm ² , Box	4032248226931 50 pc(s).	IEC: 320 V / 17.5 A / 0.2 - 1.5 mm ² Box UL: 300 V / 10 A / AWG 28 - AWG 16
BCZ 3.81/10/180 SN GN BX	1792920000	PCB plug-in connector, female plug, 3.81 mm, No. of poles: 10, 180°, Clamping yoke connection, Clamping range, rated connection, max.: 1.5 mm ² , Box	4032248227006 50 pc(s).	IEC: 320 V / 17.5 A / 0.2 - 1.5 mm ² Box UL: 300 V / 10 A / AWG 28 - AWG 16
BCZ 3.81/14/180 SN GN BX PRT	1807320000	PCB plug-in connector, female plug, 3.81 mm, No. of poles: 14, 180°, Clamping yoke connection, Clamping range, rated connection, max.: 1.5 mm ² , Box	4032248278534 50 pc(s).	IEC: 320 V / 17.5 A / 0.2 - 1.5 mm ² Box UL: 300 V / 10 A / AWG 28 - AWG 16
BCZ 3.81/10/180 SN GN PRT BX	1816370000	PCB plug-in connector, female plug, 3.81 mm, No. of poles: 10, 180°, Clamping yoke connection, Clamping range, rated connection, max.: 1.5 mm ² , Box	4032248306992 50 pc(s).	IEC: 320 V / 17.5 A / 0.2 - 1.5 mm ² Box UL: 300 V / 10 A / AWG 28 - AWG 16
BCZ 3.81/08/180 SN TGY BX SO	1021640000	PCB plug-in connector, female plug, 3.81 mm, No. of poles: 8, 180°, Clamping yoke connection, Clamping range, rated connection, max.: 1.5 mm ² , Box	4032248775910 50 pc(s).	IEC: 320 V / 17.5 A / 0.2 - 1.5 mm ² Box UL: 300 V / 10 A / AWG 28 - AWG 16
BCZ 3.81/19/180 SN GN BX	1940950000	PCB plug-in connector, female plug, 3.81 mm, No. of poles: 19, 180°, Clamping yoke connection, Clamping range, rated connection, max.: 1.5 mm ² , Box	4032248655892 50 pc(s).	IEC: 320 V / 17.5 A / 0.2 - 1.5 mm ² Box UL: 300 V / 10 A / AWG 28 - AWG 16

OMNIMATE Signal - series BC/SC 3.81
SC 3.81/02/180G 3.2SN BK BX

Weidmüller Interface GmbH & Co. KG
 Klängenbergstraße 16
 D-32758 Detmold
 Germany
 Fon: +49 5231 14-0
 Fax: +49 5231 14-292083
 www.weidmueller.com

Mating connector (fully pluggable)

BCZ 3.81/11/180 SN BK BX	1899400000	PCB plug-in connector, female plug, 3.81 mm, No. of poles: 11, 180°, Clamping yoke connection, Clamping range, rated connection, max.: 1.5 mm ² , Box	4032248519309 50 pc(s).	IEC: 320 V / 17.5 A / 0.2 - 1.5 mm ² Box UL: 300 V / 10 A / AWG 28 - AWG 16
BCZ 3.81/06/180 SN GN BX PRT	1807300000	PCB plug-in connector, female plug, 3.81 mm, No. of poles: 6, 180°, Clamping yoke connection, Clamping range, rated connection, max.: 1.5 mm ² , Box	4032248278510 50 pc(s).	IEC: 320 V / 17.5 A / 0.2 - 1.5 mm ² Box UL: 300 V / 10 A / AWG 28 - AWG 16
BCZ 3.81/20/180 SN OR BX	1940920000	PCB plug-in connector, female plug, 3.81 mm, No. of poles: 20, 180°, Clamping yoke connection, Clamping range, rated connection, max.: 1.5 mm ² , Box	4032248655922 50 pc(s).	IEC: 320 V / 17.5 A / 0.2 - 1.5 mm ² Box UL: 300 V / 10 A / AWG 28 - AWG 16
BCZ 3.81/15/180 SN BK BX	1899520000	PCB plug-in connector, female plug, 3.81 mm, No. of poles: 15, 180°, Clamping yoke connection, Clamping range, rated connection, max.: 1.5 mm ² , Box	4032248519422 50 pc(s).	IEC: 320 V / 17.5 A / 0.2 - 1.5 mm ² Box UL: 300 V / 10 A / AWG 28 - AWG 16
BCZ 3.81/17/180 SN BK BX	1940970000	PCB plug-in connector, female plug, 3.81 mm, No. of poles: 17, 180°, Clamping yoke connection, Clamping range, rated connection, max.: 1.5 mm ² , Box	4032248655878 50 pc(s).	IEC: 320 V / 17.5 A / 0.2 - 1.5 mm ² Box UL: 300 V / 10 A / AWG 28 - AWG 16
BCZ 3.81/12/180 SN GN BX	1792930000	PCB plug-in connector, female plug, 3.81 mm, No. of poles: 12, 180°, Clamping yoke connection, Clamping range, rated connection, max.: 1.5 mm ² , Box	4032248227013 50 pc(s).	IEC: 320 V / 17.5 A / 0.2 - 1.5 mm ² Box UL: 300 V / 10 A / AWG 28 - AWG 16
BCZ 3.81/03/180 SN GN BX PRT	1880200000	PCB plug-in connector, female plug, 3.81 mm, No. of poles: 3, 180°, Clamping yoke connection, Clamping range, rated connection, max.: 1.5 mm ² , Box	4032248479177 200 pc(s).	IEC: 320 V / 17.5 A / 0.2 - 1.5 mm ² Box UL: 300 V / 10 A / AWG 28 - AWG 16
BCZ 3.81/17/180 SN GN BX	1940930000	PCB plug-in connector, female plug, 3.81 mm, No. of poles: 17, 180°, Clamping yoke connection, Clamping range, rated	4032248655915 50 pc(s).	IEC: 320 V / 17.5 A / 0.2 - 1.5 mm ² Box UL: 300 V / 10 A / AWG 28 - AWG 16

**OMNIMATE Signal - series BC/SC 3.81
SC 3.81/02/180G 3.2SN BK BX**

Weidmüller Interface GmbH & Co. KG
Klingenbergstraße 16
D-32758 Detmold
Germany
Fon: +49 5231 14-0
Fax: +49 5231 14-292083
www.weidmueller.com

Mating connector (fully pluggable)

connection, max.: 1.5 mm²,
Box

BCZ 3.81/90


Female socket connectors with clamping-yoke screw system for connecting wires.

Three wire-outlet directions are available and provide flexible connection-level design options:

- 180° wire parallel to plugging direction
- 90° wire perpendicular and above plugging direction
- 270° wire perpendicular and below plugging direction

There are three housing shapes, covering many different requirements, to choose from:

- Standard housing without flange
- Flange with screw (F)
- Flange featuring Weidmüller's patented release latch (LR) for lock-and-release latching with no strain and no tools needed.

Weidmüller's 3.81-mm-pitch (0.15 inch) plug-in connectors are compatible with the layouts of customary connectors and offer space for labelling and coding.

- 0.20 - 1.5 mm² (IEC) / 28 - 16 AWG (UL)
- 250 V (IEC) / 300 V (UL)
- 17.5 A (IEC) / 10 A (UL)

General ordering data

Type	Order No.	Version	GTIN (EAN)	Qty.	Product data	Packaging
BCZ 3.81/13/90 SN BK BX	1899420000	PCB plug-in connector, female plug, 3.81 mm, No. of poles: 13, 90°, Clamping yoke connection, Clamping range, rated connection, max.: 1.5 mm ² , Box	4032248519323	50 pc(s).	IEC: 320 V / 17.5 A / 0.2 - 1.5 mm ² UL: 300 V / 10 A / AWG 28 - AWG 16	Box
BCZ 3.81/12/90 SN OR BX	1939930000	PCB plug-in connector, female plug, 3.81 mm, No. of poles: 12, 90°, Clamping yoke connection, Clamping range, rated connection, max.: 1.5 mm ² , Box	4032248656899	50 pc(s).	IEC: 320 V / 17.5 A / 0.2 - 1.5 mm ² UL: 300 V / 10 A / AWG 28 - AWG 16	Box
BCZ 3.81/03/90 SN BK BX	1798120000	PCB plug-in connector, female plug, 3.81 mm, No. of poles: 3, 90°, Clamping yoke connection, Clamping range, rated connection, max.: 1.5 mm ² , Box	4032248241316	50 pc(s).	IEC: 320 V / 17.5 A / 0.2 - 1.5 mm ² UL: 300 V / 10 A / AWG 28 - AWG 16	Box
BCZ 3.81/06/90 SN GN BX	1798730000	PCB plug-in connector, female plug, 3.81 mm, No. of poles: 6, 90°, Clamping yoke connection, Clamping range, rated connection, max.: 1.5 mm ² , Box	4032248243419	50 pc(s).	IEC: 320 V / 17.5 A / 0.2 - 1.5 mm ² UL: 300 V / 10 A / AWG 28 - AWG 16	Box

Creation date July 29, 2013 11:54:37 AM CEST

**OMNIMATE Signal - series BC/SC 3.81
SC 3.81/02/180G 3.2SN BK BX**

Weidmüller Interface GmbH & Co. KG
Klingenbergstraße 16
D-32758 Detmold
Germany
Fon: +49 5231 14-0
Fax: +49 5231 14-292083
www.weidmueller.com

Mating connector (fully pluggable)

BCZ 3.81/07/90 SN OR BX	1939880000	PCB plug-in connector, female plug, 3.81 mm, No. of poles: 7, 90°, Clamping yoke connection, Clamping range, rated connection, max.: 1.5 mm ² , Box	4032248656943 50 pc(s).	IEC: 320 V / 17.5 A / 0.2 - 1.5 mm ² Box UL: 300 V / 10 A / AWG 28 - AWG 16
BCZ 3.81/15/90 SN BK BX	1899500000	PCB plug-in connector, female plug, 3.81 mm, No. of poles: 15, 90°, Clamping yoke connection, Clamping range, rated connection, max.: 1.5 mm ² , Box	4032248519408 50 pc(s).	IEC: 320 V / 17.5 A / 0.2 - 1.5 mm ² Box UL: 300 V / 10 A / AWG 28 - AWG 16
BCZ 3.81/11/90 SN BK BX	1899380000	PCB plug-in connector, female plug, 3.81 mm, No. of poles: 11, 90°, Clamping yoke connection, Clamping range, rated connection, max.: 1.5 mm ² , Box	4032248519286 50 pc(s).	IEC: 320 V / 17.5 A / 0.2 - 1.5 mm ² Box UL: 300 V / 10 A / AWG 28 - AWG 16
BCZ 3.81/10/90 SN GN BX	1798750000	PCB plug-in connector, female plug, 3.81 mm, No. of poles: 10, 90°, Clamping yoke connection, Clamping range, rated connection, max.: 1.5 mm ² , Box	4032248243433 50 pc(s).	IEC: 320 V / 17.5 A / 0.2 - 1.5 mm ² Box UL: 300 V / 10 A / AWG 28 - AWG 16
BCZ 3.81/02/90 SN BK BX	1798500000	PCB plug-in connector, female plug, 3.81 mm, No. of poles: 2, 90°, Clamping yoke connection, Clamping range, rated connection, max.: 1.5 mm ² , Box	4032248243006 50 pc(s).	IEC: 320 V / 17.5 A / 0.2 - 1.5 mm ² Box UL: 300 V / 10 A / AWG 28 - AWG 16
BCZ 3.81/14/90 SN BK BX	1899460000	PCB plug-in connector, female plug, 3.81 mm, No. of poles: 14, 90°, Clamping yoke connection, Clamping range, rated connection, max.: 1.5 mm ² , Box	4032248519361 50 pc(s).	IEC: 320 V / 17.5 A / 0.2 - 1.5 mm ² Box UL: 300 V / 10 A / AWG 28 - AWG 16
BCZ 3.81/16/90 SN OR BX	1939970000	PCB plug-in connector, female plug, 3.81 mm, No. of poles: 16, 90°, Clamping yoke connection, Clamping range, rated connection, max.: 1.5 mm ² , Box	4032248656851 50 pc(s).	IEC: 320 V / 17.5 A / 0.2 - 1.5 mm ² Box UL: 300 V / 10 A / AWG 28 - AWG 16
BCZ 3.81/11/90 SN GN BX	1899370000	PCB plug-in connector, female plug, 3.81 mm, No. of poles: 11, 90°, Clamping yoke connection, Clamping range, rated connection, max.: 1.5 mm ² , Box	4032248519279 50 pc(s).	IEC: 320 V / 17.5 A / 0.2 - 1.5 mm ² Box UL: 300 V / 10 A / AWG 28 - AWG 16
BCZ 3.81/02/90 SN GN BX	1798680000	PCB plug-in connector, female plug, 3.81 mm, No. of poles: 2, 90°, Clamping yoke connection, Clamping range, rated connection, max.: 1.5 mm ² , Box	4032248243273 50 pc(s).	IEC: 320 V / 17.5 A / 0.2 - 1.5 mm ² Box UL: 300 V / 10 A / AWG 28 - AWG 16

OMNIMATE Signal - series BC/SC 3.81
SC 3.81/02/180G 3.2SN BK BX

Weidmüller Interface GmbH & Co. KG
 Klingenbergstraße 16
 D-32758 Detmold
 Germany
 Fon: +49 5231 14-0
 Fax: +49 5231 14-292083
 www.weidmueller.com

Mating connector (fully pluggable)

BCZ 3.81/16/90 SN BK BX	1798660000	PCB plug-in connector, female plug, 3.81 mm, No. of poles: 16, 90°, Clamping yoke connection, Clamping range, rated connection, max.: 1.5 mm ² , Box	4032248243266 50 pc(s).	IEC: 320 V / 17.5 A / 0.2 - 1.5 mm ² Box UL: 300 V / 10 A / AWG 28 - AWG 16
BCZ 3.81/15/90 SN GN BX	1899490000	PCB plug-in connector, female plug, 3.81 mm, No. of poles: 15, 90°, Clamping yoke connection, Clamping range, rated connection, max.: 1.5 mm ² , Box	4032248519392 50 pc(s).	IEC: 320 V / 17.5 A / 0.2 - 1.5 mm ² Box UL: 300 V / 10 A / AWG 28 - AWG 16
BCZ 3.81/12/90 SN BK BX	1798630000	PCB plug-in connector, female plug, 3.81 mm, No. of poles: 12, 90°, Clamping yoke connection, Clamping range, rated connection, max.: 1.5 mm ² , Box	4032248243259 50 pc(s).	IEC: 320 V / 17.5 A / 0.2 - 1.5 mm ² Box UL: 300 V / 10 A / AWG 28 - AWG 16
BCZ 3.81/15/90 SN OR BX	1939960000	PCB plug-in connector, female plug, 3.81 mm, No. of poles: 15, 90°, Clamping yoke connection, Clamping range, rated connection, max.: 1.5 mm ² , Box	4032248656868 50 pc(s).	IEC: 320 V / 17.5 A / 0.2 - 1.5 mm ² Box UL: 300 V / 10 A / AWG 28 - AWG 16
BCZ 3.81/12/90 SN GN BX	1798760000	PCB plug-in connector, female plug, 3.81 mm, No. of poles: 12, 90°, Clamping yoke connection, Clamping range, rated connection, max.: 1.5 mm ² , Box	4032248243440 50 pc(s).	IEC: 320 V / 17.5 A / 0.2 - 1.5 mm ² Box UL: 300 V / 10 A / AWG 28 - AWG 16
BCZ 3.81/03/90 SN OR BX	1939830000	PCB plug-in connector, female plug, 3.81 mm, No. of poles: 3, 90°, Clamping yoke connection, Clamping range, rated connection, max.: 1.5 mm ² , Box	4032248653959 50 pc(s).	IEC: 320 V / 17.5 A / 0.2 - 1.5 mm ² Box UL: 300 V / 10 A / AWG 28 - AWG 16
BCZ 3.81/06/90 SN BK BX	1798590000	PCB plug-in connector, female plug, 3.81 mm, No. of poles: 6, 90°, Clamping yoke connection, Clamping range, rated connection, max.: 1.5 mm ² , Box	4032248243235 50 pc(s).	IEC: 320 V / 17.5 A / 0.2 - 1.5 mm ² Box UL: 300 V / 10 A / AWG 28 - AWG 16
BCZ 3.81/05/90 SN BK BX	1798570000	PCB plug-in connector, female plug, 3.81 mm, No. of poles: 5, 90°, Clamping yoke connection, Clamping range, rated connection, max.: 1.5 mm ² , Box	4032248243228 50 pc(s).	IEC: 320 V / 17.5 A / 0.2 - 1.5 mm ² Box UL: 300 V / 10 A / AWG 28 - AWG 16
BCZ 3.81/08/90 SN GN BX	1798740000	PCB plug-in connector, female plug, 3.81 mm, No. of poles: 8, 90°, Clamping yoke connection, Clamping range, rated connection, max.: 1.5 mm ² , Box	4032248243426 50 pc(s).	IEC: 320 V / 17.5 A / 0.2 - 1.5 mm ² Box UL: 300 V / 10 A / AWG 28 - AWG 16

**OMNIMATE Signal - series BC/SC 3.81
SC 3.81/02/180G 3.2SN BK BX**

Weidmüller Interface GmbH & Co. KG
Klingenbergstraße 16
D-32758 Detmold
Germany
Fon: +49 5231 14-0
Fax: +49 5231 14-292083
www.weidmueller.com

Mating connector (fully pluggable)

BCZ 3.81/06/90 SN OR BX	1939870000	PCB plug-in connector, female plug, 3.81 mm, No. of poles: 6, 90°, Clamping yoke connection, Clamping range, rated connection, max.: 1.5 mm ² , Box	4032248656950 50 pc(s).	IEC: 320 V / 17.5 A / 0.2 - 1.5 mm ² Box UL: 300 V / 10 A / AWG 28 - AWG 16
BCZ 3.81/16/90 SN GN BX	1798770000	PCB plug-in connector, female plug, 3.81 mm, No. of poles: 16, 90°, Clamping yoke connection, Clamping range, rated connection, max.: 1.5 mm ² , Box	4032248243457 50 pc(s).	IEC: 320 V / 17.5 A / 0.2 - 1.5 mm ² Box UL: 300 V / 10 A / AWG 28 - AWG 16
BCZ 3.81/04/90 SN OR BX	1939840000	PCB plug-in connector, female plug, 3.81 mm, No. of poles: 4, 90°, Clamping yoke connection, Clamping range, rated connection, max.: 1.5 mm ² , Box	4032248653942 50 pc(s).	IEC: 320 V / 17.5 A / 0.2 - 1.5 mm ² Box UL: 300 V / 10 A / AWG 28 - AWG 16
BCZ 3.81/13/90 SN GN BX	1899410000	PCB plug-in connector, female plug, 3.81 mm, No. of poles: 13, 90°, Clamping yoke connection, Clamping range, rated connection, max.: 1.5 mm ² , Box	4032248519316 50 pc(s).	IEC: 320 V / 17.5 A / 0.2 - 1.5 mm ² Box UL: 300 V / 10 A / AWG 28 - AWG 16
BCZ 3.81/13/90 SN OR BX	1939940000	PCB plug-in connector, female plug, 3.81 mm, No. of poles: 13, 90°, Clamping yoke connection, Clamping range, rated connection, max.: 1.5 mm ² , Box	4032248656882 50 pc(s).	IEC: 320 V / 17.5 A / 0.2 - 1.5 mm ² Box UL: 300 V / 10 A / AWG 28 - AWG 16
BCZ 3.81/08/90 SN OR BX	1939890000	PCB plug-in connector, female plug, 3.81 mm, No. of poles: 8, 90°, Clamping yoke connection, Clamping range, rated connection, max.: 1.5 mm ² , Box	4032248656936 50 pc(s).	IEC: 320 V / 17.5 A / 0.2 - 1.5 mm ² Box UL: 300 V / 10 A / AWG 28 - AWG 16
BCZ 3.81/07/90 SN BK BX	1858960000	PCB plug-in connector, female plug, 3.81 mm, No. of poles: 7, 90°, Clamping yoke connection, Clamping range, rated connection, max.: 1.5 mm ² , Box	4032248410576 50 pc(s).	IEC: 320 V / 17.5 A / 0.2 - 1.5 mm ² Box UL: 300 V / 10 A / AWG 28 - AWG 16
BCZ 3.81/08/90 SN BK BX	1798130000	PCB plug-in connector, female plug, 3.81 mm, No. of poles: 8, 90°, Clamping yoke connection, Clamping range, rated connection, max.: 1.5 mm ² , Box	4032248241323 50 pc(s).	IEC: 320 V / 17.5 A / 0.2 - 1.5 mm ² Box UL: 300 V / 10 A / AWG 28 - AWG 16
BCZ 3.81/05/90 SN GN BX	1798720000	PCB plug-in connector, female plug, 3.81 mm, No. of poles: 5, 90°, Clamping yoke connection, Clamping range, rated connection, max.: 1.5 mm ² , Box	4032248243303 50 pc(s).	IEC: 320 V / 17.5 A / 0.2 - 1.5 mm ² Box UL: 300 V / 10 A / AWG 28 - AWG 16

**OMNIMATE Signal - series BC/SC 3.81
SC 3.81/02/180G 3.2SN BK BX**

Weidmüller Interface GmbH & Co. KG
Klingenbergstraße 16
D-32758 Detmold
Germany
Fon: +49 5231 14-0
Fax: +49 5231 14-292083
www.weidmueller.com

Mating connector (fully pluggable)

BCZ 3.81/04/90 SN BK BX	1798550000	PCB plug-in connector, female plug, 3.81 mm, No. of poles: 4, 90°, Clamping yoke connection, Clamping range, rated connection, max.: 1.5 mm ² , Box	4032248243211 50 pc(s).	IEC: 320 V / 17.5 A / 0.2 - 1.5 mm ² Box UL: 300 V / 10 A / AWG 28 - AWG 16
BCZ 3.81/10/90 SN BK BX	1798610000	PCB plug-in connector, female plug, 3.81 mm, No. of poles: 10, 90°, Clamping yoke connection, Clamping range, rated connection, max.: 1.5 mm ² , Box	4032248243242 50 pc(s).	IEC: 320 V / 17.5 A / 0.2 - 1.5 mm ² Box UL: 300 V / 10 A / AWG 28 - AWG 16
BCZ 3.81/14/90 SN GN BX	1899450000	PCB plug-in connector, female plug, 3.81 mm, No. of poles: 14, 90°, Clamping yoke connection, Clamping range, rated connection, max.: 1.5 mm ² , Box	4032248519354 50 pc(s).	IEC: 320 V / 17.5 A / 0.2 - 1.5 mm ² Box UL: 300 V / 10 A / AWG 28 - AWG 16
BCZ 3.81/04/90 SN GN BX	1798710000	PCB plug-in connector, female plug, 3.81 mm, No. of poles: 4, 90°, Clamping yoke connection, Clamping range, rated connection, max.: 1.5 mm ² , Box	4032248243297 50 pc(s).	IEC: 320 V / 17.5 A / 0.2 - 1.5 mm ² Box UL: 300 V / 10 A / AWG 28 - AWG 16
BCZ 3.81/03/90 SN GN BX	1798690000	PCB plug-in connector, female plug, 3.81 mm, No. of poles: 3, 90°, Clamping yoke connection, Clamping range, rated connection, max.: 1.5 mm ² , Box	4032248243280 50 pc(s).	IEC: 320 V / 17.5 A / 0.2 - 1.5 mm ² Box UL: 300 V / 10 A / AWG 28 - AWG 16
BCZ 3.81/11/90 SN OR BX	1939920000	PCB plug-in connector, female plug, 3.81 mm, No. of poles: 11, 90°, Clamping yoke connection, Clamping range, rated connection, max.: 1.5 mm ² , Box	4032248656905 50 pc(s).	IEC: 320 V / 17.5 A / 0.2 - 1.5 mm ² Box UL: 300 V / 10 A / AWG 28 - AWG 16
BCZ 3.81/02/90 SN OR BX	1939820000	PCB plug-in connector, female plug, 3.81 mm, No. of poles: 2, 90°, Clamping yoke connection, Clamping range, rated connection, max.: 1.5 mm ² , Box	4032248653966 50 pc(s).	IEC: 320 V / 17.5 A / 0.2 - 1.5 mm ² Box UL: 300 V / 10 A / AWG 28 - AWG 16
BCZ 3.81/10/90 SN OR BX	1939910000	PCB plug-in connector, female plug, 3.81 mm, No. of poles: 10, 90°, Clamping yoke connection, Clamping range, rated connection, max.: 1.5 mm ² , Box	4032248656912 50 pc(s).	IEC: 320 V / 17.5 A / 0.2 - 1.5 mm ² Box UL: 300 V / 10 A / AWG 28 - AWG 16
BCZ 3.81/09/90 SN OR BX	1939900000	PCB plug-in connector, female plug, 3.81 mm, No. of poles: 9, 90°, Clamping yoke connection, Clamping range, rated connection, max.: 1.5 mm ² , Box	4032248656929 50 pc(s).	IEC: 320 V / 17.5 A / 0.2 - 1.5 mm ² Box UL: 300 V / 10 A / AWG 28 - AWG 16

**OMNIMATE Signal - series BC/SC 3.81
SC 3.81/02/180G 3.2SN BK BX**

Weidmüller Interface GmbH & Co. KG
Klingenbergstraße 16
D-32758 Detmold
Germany
Fon: +49 5231 14-0
Fax: +49 5231 14-292083
www.weidmueller.com

Mating connector (fully pluggable)

BCZ 3.81/14/90 SN OR BX	1939950000	PCB plug-in connector, female plug, 3.81 mm, No. of poles: 14, 90°, Clamping yoke connection, Clamping range, rated connection, max.: 1.5 mm ² , Box	4032248656875 50 pc(s).	IEC: 320 V / 17.5 A / 0.2 - 1.5 mm ² Box UL: 300 V / 10 A / AWG 28 - AWG 16
BCZ 3.81/05/90 SN OR BX	1939860000	PCB plug-in connector, female plug, 3.81 mm, No. of poles: 5, 90°, Clamping yoke connection, Clamping range, rated connection, max.: 1.5 mm ² , Box	4032248656967 50 pc(s).	IEC: 320 V / 17.5 A / 0.2 - 1.5 mm ² Box UL: 300 V / 10 A / AWG 28 - AWG 16

BCZ 3.81/180ZE


Female socket connectors with clamping-yoke screw system for connecting wires.

Three wire-outlet directions are available and provide flexible connection-level design options:

- 180° wire parallel to plugging direction
- 90° wire perpendicular and above plugging direction
- 270° wire perpendicular and below plugging direction

There are three housing shapes, covering many different requirements, to choose from:

- Standard housing without flange
- Flange with screw (F)
- Flange featuring Weidmüller's patented release latch (LR) for lock-and-release latching with no strain and no tools needed.

Weidmüller's 3.81-mm-pitch (0.15 inch) plug-in connectors are compatible with the layouts of customary connectors and offer space for labelling and coding.

- 0.20 - 1.5 mm² (IEC) / 28 - 16 AWG (UL)
- 250 V (IEC) / 300 V (UL)
- 17.5 A (IEC) / 10 A (UL)

General ordering data

Type	Order No.	Version	GTIN (EAN)	Qty.	Product data	Packaging
BCZ 3.81/14/180ZE SN BK BX	1072050000	PCB plug-in connector, female plug, 3.81 mm, No. of poles: 14, 180°, Clamping yoke connection, Clamping range, rated connection, max.: 1.5 mm ² , Box	4032248830480 50 pc(s).		IEC: 320 V / 17.5 A / 0.2 - 1.5 mm ² UL: 300 V / 10 A / AWG 28 - AWG 16	Box
BCZ 3.81/15/180ZE SN BK BX	1072060000	PCB plug-in connector, female plug, 3.81 mm, No. of poles: 15, 180°, Clamping yoke connection, Clamping range, rated connection, max.: 1.5 mm ² , Box	4032248830497 50 pc(s).		IEC: 320 V / 17.5 A / 0.2 - 1.5 mm ² UL: 300 V / 10 A / AWG 28 - AWG 16	Box

**OMNIMATE Signal - series BC/SC 3.81
SC 3.81/02/180G 3.2SN BK BX**

Weidmüller Interface GmbH & Co. KG
Klingenbergstraße 16
D-32758 Detmold
Germany
Fon: +49 5231 14-0
Fax: +49 5231 14-292083
www.weidmueller.com

Mating connector (fully pluggable)

BCZ 3.81/10/180ZE SN OR BX	1236330000	PCB plug-in connector, female plug, 3.81 mm, No. of poles: 10, 180°, Clamping yoke connection, Clamping range, rated connection, max.: 1.5 mm ²	4050118021677 50 pc(s).	IEC: 320 V / 17.5 A / 0.2 - 1.5 mm ² UL: 300 V / 10 A / AWG 28 - AWG 16
BCZ 3.81/11/180ZE SN OR BX	1236340000	PCB plug-in connector, female plug, 3.81 mm, No. of poles: 11, 180°, Clamping yoke connection, Clamping range, rated connection, max.: 1.5 mm ²	4050118021448 50 pc(s).	IEC: 320 V / 17.5 A / 0.2 - 1.5 mm ² UL: 300 V / 10 A / AWG 28 - AWG 16
BCZ 3.81/18/180ZE SN BK BX	1072090000	PCB plug-in connector, female plug, 3.81 mm, No. of poles: 18, 180°, Clamping yoke connection, Clamping range, rated connection, max.: 1.5 mm ² , Box	4032248830527 50 pc(s).	IEC: 320 V / 17.5 A / 0.2 - 1.5 mm ² Box UL: 300 V / 10 A / AWG 28 - AWG 16
BCZ 3.81/14/180ZE SN OR BX	1236390000	PCB plug-in connector, female plug, 3.81 mm, No. of poles: 14, 180°, Clamping yoke connection, Clamping range, rated connection, max.: 1.5 mm ²	4050118021493 50 pc(s).	IEC: 320 V / 17.5 A / 0.2 - 1.5 mm ² UL: 300 V / 10 A / AWG 28 - AWG 16
BCZ 3.81/06/180ZE SN OR BX	1236280000	PCB plug-in connector, female plug, 3.81 mm, No. of poles: 6, 180°, Clamping yoke connection, Clamping range, rated connection, max.: 1.5 mm ²	4050118021592 50 pc(s).	IEC: 320 V / 17.5 A / 0.2 - 1.5 mm ² UL: 300 V / 10 A / AWG 28 - AWG 16
BCZ 3.81/18/180ZE SN OR BX	1236430000	PCB plug-in connector, female plug, 3.81 mm, No. of poles: 18, 180°, Clamping yoke connection, Clamping range, rated connection, max.: 1.5 mm ²	4050118021776 50 pc(s).	IEC: 320 V / 17.5 A / 0.2 - 1.5 mm ² UL: 300 V / 10 A / AWG 28 - AWG 16
BCZ 3.81/17/180ZE SN OR BX	1236420000	PCB plug-in connector, female plug, 3.81 mm, No. of poles: 17, 180°, Clamping yoke connection, Clamping range, rated connection, max.: 1.5 mm ²	4050118021479 50 pc(s).	IEC: 320 V / 17.5 A / 0.2 - 1.5 mm ² UL: 300 V / 10 A / AWG 28 - AWG 16
BCZ 3.81/20/180ZE SN OR BX	1236470000	PCB plug-in connector, female plug, 3.81 mm, No. of poles: 20, 180°, Clamping yoke connection, Clamping range, rated connection, max.: 1.5 mm ²	4050118021752 50 pc(s).	IEC: 320 V / 17.5 A / 0.2 - 1.5 mm ² UL: 300 V / 10 A / AWG 28 - AWG 16
BCZ 3.81/09/180ZE SN OR BX	1236320000	PCB plug-in connector, female plug, 3.81 mm, No. of poles: 9, 180°, Clamping yoke connection, Clamping range, rated connection, max.: 1.5 mm ²	4050118021691 50 pc(s).	IEC: 320 V / 17.5 A / 0.2 - 1.5 mm ² UL: 300 V / 10 A / AWG 28 - AWG 16

OMNIMATE Signal - series BC/SC 3.81
SC 3.81/02/180G 3.2SN BK BX

Weidmüller Interface GmbH & Co. KG
 Klingenbergstraße 16
 D-32758 Detmold
 Germany
 Fon: +49 5231 14-0
 Fax: +49 5231 14-292083
 www.weidmueller.com

Mating connector (fully pluggable)

BCZ 3.81/12/180ZE SN OR BX	1236370000	PCB plug-in connector, female plug, 3.81 mm, No. of poles: 12, 180°, Clamping yoke connection, Clamping range, rated connection, max.: 1.5 mm ²	4050118021585 50 pc(s).	IEC: 320 V / 17.5 A / 0.2 - 1.5 mm ² UL: 300 V / 10 A / AWG 28 - AWG 16
BCZ 3.81/20/180ZE SN BK BX	1072120000	PCB plug-in connector, female plug, 3.81 mm, No. of poles: 20, 180°, Clamping yoke connection, Clamping range, rated connection, max.: 1.5 mm ² , Box	4032248830541 50 pc(s).	IEC: 320 V / 17.5 A / 0.2 - 1.5 mm ² Box UL: 300 V / 10 A / AWG 28 - AWG 16
BCZ 3.81/11/180ZE SN BK BX	1072020000	PCB plug-in connector, female plug, 3.81 mm, No. of poles: 11, 180°, Clamping yoke connection, Clamping range, rated connection, max.: 1.5 mm ² , Box	4032248830459 50 pc(s).	IEC: 320 V / 17.5 A / 0.2 - 1.5 mm ² Box UL: 300 V / 10 A / AWG 28 - AWG 16
BCZ 3.81/13/180ZE SN BK BX	1072040000	PCB plug-in connector, female plug, 3.81 mm, No. of poles: 13, 180°, Clamping yoke connection, Clamping range, rated connection, max.: 1.5 mm ² , Box	4032248830473 50 pc(s).	IEC: 320 V / 17.5 A / 0.2 - 1.5 mm ² Box UL: 300 V / 10 A / AWG 28 - AWG 16
BCZ 3.81/08/180ZE SN OR BX	1236300000	PCB plug-in connector, female plug, 3.81 mm, No. of poles: 8, 180°, Clamping yoke connection, Clamping range, rated connection, max.: 1.5 mm ²	4050118021639 50 pc(s).	IEC: 320 V / 17.5 A / 0.2 - 1.5 mm ² UL: 300 V / 10 A / AWG 28 - AWG 16
BCZ 3.81/19/180ZE SN OR BX	1236440000	PCB plug-in connector, female plug, 3.81 mm, No. of poles: 19, 180°, Clamping yoke connection, Clamping range, rated connection, max.: 1.5 mm ²	4050118021721 50 pc(s).	IEC: 320 V / 17.5 A / 0.2 - 1.5 mm ² UL: 300 V / 10 A / AWG 28 - AWG 16
BCZ 3.81/05/180ZE SN OR BX	1236270000	PCB plug-in connector, female plug, 3.81 mm, No. of poles: 5, 180°, Clamping yoke connection, Clamping range, rated connection, max.: 1.5 mm ²	4050118021653 50 pc(s).	IEC: 320 V / 17.5 A / 0.2 - 1.5 mm ² UL: 300 V / 10 A / AWG 28 - AWG 16
BCZ 3.81/12/180ZE SN BK BX	1072030000	PCB plug-in connector, female plug, 3.81 mm, No. of poles: 12, 180°, Clamping yoke connection, Clamping range, rated connection, max.: 1.5 mm ² , Box	4032248830466 50 pc(s).	IEC: 320 V / 17.5 A / 0.2 - 1.5 mm ² Box UL: 300 V / 10 A / AWG 28 - AWG 16
BCZ 3.81/08/180ZE SN BK BX	1941970000	PCB plug-in connector, female plug, 3.81 mm, No. of poles: 8, 180°, Clamping	4032248698783 50 pc(s).	IEC: 320 V / 17.5 A / 0.2 - 1.5 mm ² Box UL: 300 V / 10 A / AWG 28 - AWG 16

Creation date July 29, 2013 11:54:37 AM CEST

**OMNIMATE Signal - series BC/SC 3.81
SC 3.81/02/180G 3.2SN BK BX**

Weidmüller Interface GmbH & Co. KG
Klingenbergstraße 16
D-32758 Detmold
Germany
Fon: +49 5231 14-0
Fax: +49 5231 14-292083
www.weidmueller.com

Mating connector (fully pluggable)

		yoke connection, Clamping range, rated connection, max.: 1.5 mm ² , Box		
BCZ 3.81/07/180ZE SN OR BX	1236290000	PCB plug-in connector, female plug, 3.81 mm, No. of poles: 7, 180°, Clamping yoke connection, Clamping range, rated connection, max.: 1.5 mm ²	4050118021578 50 pc(s).	IEC: 320 V / 17.5 A / 0.2 - 1.5 mm ² UL: 300 V / 10 A / AWG 28 - AWG 16
BCZ 3.81/09/180ZE SN BK BX	1071980000	PCB plug-in connector, female plug, 3.81 mm, No. of poles: 9, 180°, Clamping yoke connection, Clamping range, rated connection, max.: 1.5 mm ² , Box	4032248830435 50 pc(s).	IEC: 320 V / 17.5 A / 0.2 - 1.5 mm ² UL: 300 V / 10 A / AWG 28 - AWG 16
BCZ 3.81/05/180ZE SN BK BX	1071950000	PCB plug-in connector, female plug, 3.81 mm, No. of poles: 5, 180°, Clamping yoke connection, Clamping range, rated connection, max.: 1.5 mm ² , Box	4032248830404 50 pc(s).	IEC: 320 V / 17.5 A / 0.2 - 1.5 mm ² UL: 300 V / 10 A / AWG 28 - AWG 16
BCZ 3.81/15/180ZE SN OR BX	1236400000	PCB plug-in connector, female plug, 3.81 mm, No. of poles: 15, 180°, Clamping yoke connection, Clamping range, rated connection, max.: 1.5 mm ²	4050118021622 50 pc(s).	IEC: 320 V / 17.5 A / 0.2 - 1.5 mm ² UL: 300 V / 10 A / AWG 28 - AWG 16
BCZ 3.81/13/180ZE SN OR BX	1236380000	PCB plug-in connector, female plug, 3.81 mm, No. of poles: 13, 180°, Clamping yoke connection, Clamping range, rated connection, max.: 1.5 mm ²	4050118021738 50 pc(s).	IEC: 320 V / 17.5 A / 0.2 - 1.5 mm ² UL: 300 V / 10 A / AWG 28 - AWG 16
BCZ 3.81/16/180ZE SN BK BX	1072070000	PCB plug-in connector, female plug, 3.81 mm, No. of poles: 16, 180°, Clamping yoke connection, Clamping range, rated connection, max.: 1.5 mm ² , Box	4032248830503 50 pc(s).	IEC: 320 V / 17.5 A / 0.2 - 1.5 mm ² UL: 300 V / 10 A / AWG 28 - AWG 16
BCZ 3.81/17/180ZE SN BK BX	1072080000	PCB plug-in connector, female plug, 3.81 mm, No. of poles: 17, 180°, Clamping yoke connection, Clamping range, rated connection, max.: 1.5 mm ² , Box	4032248830510 50 pc(s).	IEC: 320 V / 17.5 A / 0.2 - 1.5 mm ² UL: 300 V / 10 A / AWG 28 - AWG 16
BCZ 3.81/06/180ZE SN BK BX	1071960000	PCB plug-in connector, female plug, 3.81 mm, No. of poles: 6, 180°, Clamping yoke connection, Clamping range, rated connection, max.: 1.5 mm ² , Box	4032248830411 50 pc(s).	IEC: 320 V / 17.5 A / 0.2 - 1.5 mm ² UL: 300 V / 10 A / AWG 28 - AWG 16

**OMNIMATE Signal - series BC/SC 3.81
SC 3.81/02/180G 3.2SN BK BX**

Weidmüller Interface GmbH & Co. KG
Klingenbergstraße 16
D-32758 Detmold
Germany
Fon: +49 5231 14-0
Fax: +49 5231 14-292083
www.weidmueller.com

Mating connector (fully pluggable)

BCZ 3.81/16/180ZE SN OR BX	1236410000	PCB plug-in connector, female plug, 3.81 mm, No. of poles: 16, 180°, Clamping yoke connection, Clamping range, rated connection, max.: 1.5 mm ²	4050118021455 50 pc(s).	IEC: 320 V / 17.5 A / 0.2 - 1.5 mm ² UL: 300 V / 10 A / AWG 28 - AWG 16
BCZ 3.81/19/180ZE SN BK BX	1072110000	PCB plug-in connector, female plug, 3.81 mm, No. of poles: 19, 180°, Clamping yoke connection, Clamping range, rated connection, max.: 1.5 mm ² , Box	4032248830534 50 pc(s).	IEC: 320 V / 17.5 A / 0.2 - 1.5 mm ² Box UL: 300 V / 10 A / AWG 28 - AWG 16
BCZ 3.81/10/180ZE SN BK BX	1072010000	PCB plug-in connector, female plug, 3.81 mm, No. of poles: 10, 180°, Clamping yoke connection, Clamping range, rated connection, max.: 1.5 mm ² , Box	4032248830442 50 pc(s).	IEC: 320 V / 17.5 A / 0.2 - 1.5 mm ² Box UL: 300 V / 10 A / AWG 28 - AWG 16
BCZ 3.81/07/180ZE SN BK BX	1071970000	PCB plug-in connector, female plug, 3.81 mm, No. of poles: 7, 180°, Clamping yoke connection, Clamping range, rated connection, max.: 1.5 mm ² , Box	4032248830428 50 pc(s).	IEC: 320 V / 17.5 A / 0.2 - 1.5 mm ² Box UL: 300 V / 10 A / AWG 28 - AWG 16

**OMNIMATE Signal - series BC/SC 3.81
SC 3.81/02/180G 3.2SN BK BX**

Weidmüller Interface GmbH & Co. KG
Klingenbergstraße 16
D-32758 Detmold
Germany
Fon: +49 5231 14-0
Fax: +49 5231 14-292083
www.weidmueller.com

Mating connector (conditionally pluggable)

BCZ 3.81/90F



Female socket connectors with clamping-yoke screw system for connecting wires.

Three wire-outlet directions are available and provide flexible connection-level design options:

- 180° wire parallel to plugging direction
- 90° wire perpendicular and above plugging direction
- 270° wire perpendicular and below plugging direction

There are three housing shapes, covering many different requirements, to choose from:

- Standard housing without flange
- Flange with screw (F)
- Flange featuring Weidmüller's patented release latch (LR) for lock-and-release latching with no strain and no tools needed.

Weidmüller's 3.81-mm-pitch (0.15 inch) plug-in connectors are compatible with the layouts of customary connectors and offer space for labelling and coding.

- 0.20 - 1.5 mm² (IEC) / 28 - 16 AWG (UL)
- 250 V (IEC) / 300 V (UL)
- 17.5 A (IEC) / 10 A (UL)

General ordering data

Type	Order No.	Version	GTIN (EAN)	Qty.	Product data	Packaging
BCZ 3.81/02/90F SN GN BX	1798850000	PCB plug-in connector, female plug, 3.81 mm, No. of poles: 2, 90°, Clamping yoke connection, Clamping range, rated connection, max.: 1.5 mm ² , Box	4032248243532	50 pc(s).	IEC: 320 V / 17.5 A / 0.2 - 1.5 mm ² UL: 300 V / 10 A / AWG 28 - AWG 16	Box
BCZ 3.81/02/90F SN BK BX	1798780000	PCB plug-in connector, female plug, 3.81 mm, No. of poles: 2, 90°, Clamping yoke connection, Clamping range, rated connection, max.: 1.5 mm ² , Box	4032248243464	50 pc(s).	IEC: 320 V / 17.5 A / 0.2 - 1.5 mm ² UL: 300 V / 10 A / AWG 28 - AWG 16	Box
BCZ 3.81/02/90F SN OR BX	1939980000	PCB plug-in connector, female plug, 3.81 mm, No. of poles: 2, 90°, Clamping yoke connection, Clamping range, rated connection, max.: 1.5 mm ² , Box	4032248656844	50 pc(s).	IEC: 320 V / 17.5 A / 0.2 - 1.5 mm ² UL: 300 V / 10 A / AWG 28 - AWG 16	Box

**OMNIMATE Signal - series BC/SC 3.81
SC 3.81/02/180G 3.2SN BK BX**

Weidmüller Interface GmbH & Co. KG
Klingenbergstraße 16
D-32758 Detmold
Germany
Fon: +49 5231 14-0
Fax: +49 5231 14-292083
www.weidmueller.com

Mating connector (conditionally pluggable)

BCZ 3.81/180F



Female socket connectors with clamping-yoke screw system for connecting wires. Three wire-outlet directions are available and provide flexible connection-level design options:

- 180° wire parallel to plugging direction
- 90° wire perpendicular and above plugging direction
- 270° wire perpendicular and below plugging direction

There are three housing shapes, covering many different requirements, to choose from:

- Standard housing without flange
- Flange with screw (F)
- Flange featuring Weidmüller's patented release latch (LR) for lock-and-release latching with no strain and no tools needed.

Weidmüller's 3.81-mm-pitch (0.15 inch) plug-in connectors are compatible with the layouts of customary connectors and offer space for labelling and coding.

- 0.20 - 1.5 mm² (IEC) / 28 - 16 AWG (UL)
- 250 V (IEC) / 300 V (UL)
- 17.5 A (IEC) / 10 A (UL)

General ordering data

Type	Order No.	Version	GTIN (EAN)	Qty.	Product data	Packaging
BCZ 3.81/02/180F SN GN BX	1793040000	PCB plug-in connector, female plug, 3.81 mm, No. of poles: 2, 180°, Clamping yoke connection, Clamping range, rated connection, max.: 1.5 mm ² , Box	4032248227129	50 pc(s).	IEC: 320 V / 17.5 A / 0.2 - 1.5 mm ² UL: 300 V / 10 A / AWG 28 - AWG 16	Box
BCZ 3.81/02/180F SN OR BX	1941010000	PCB plug-in connector, female plug, 3.81 mm, No. of poles: 2, 180°, Clamping yoke connection, Clamping range, rated connection, max.: 1.5 mm ² , Box	4032248655830	50 pc(s).	IEC: 320 V / 17.5 A / 0.2 - 1.5 mm ² UL: 300 V / 10 A / AWG 28 - AWG 16	Box
BCZ 3.81/02/180F SN BK BX	1792950000	PCB plug-in connector, female plug, 3.81 mm, No. of poles: 2, 180°, Clamping yoke connection, Clamping range, rated connection, max.: 1.5 mm ² , Box	4032248227037	50 pc(s).	IEC: 320 V / 17.5 A / 0.2 - 1.5 mm ² UL: 300 V / 10 A / AWG 28 - AWG 16	Box

**OMNIMATE Signal - series BC/SC 3.81
SC 3.81/02/180G 3.2SN BK BX**

Weidmüller Interface GmbH & Co. KG
Klingenbergstraße 16
D-32758 Detmold
Germany
Fon: +49 5231 14-0
Fax: +49 5231 14-292083
www.weidmueller.com

Mating connector (conditionally pluggable)
BCZ 3.81/180LR


Female socket connectors with clamping-yoke screw system for connecting wires.

Three wire-outlet directions are available and provide flexible connection-level design options:

- 180° wire parallel to plugging direction
- 90° wire perpendicular and above plugging direction
- 270° wire perpendicular and below plugging direction

There are three housing shapes, covering many different requirements, to choose from:

- Standard housing without flange
- Flange with screw (F)
- Flange featuring Weidmüller's patented release latch (LR) for lock-and-release latching with no strain and no tools needed.

Weidmüller's 3.81-mm-pitch (0.15 inch) plug-in connectors are compatible with the layouts of customary connectors and offer space for labelling and coding.

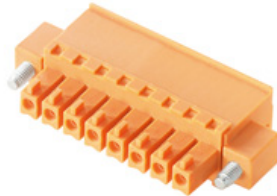
- 0.20 - 1.5 mm² (IEC) / 28 - 16 AWG (UL)
- 250 V (IEC) / 300 V (UL)
- 17.5 A (IEC) / 10 A (UL)

General ordering data

Type	Order No.	Version	GTIN (EAN)	Qty.	Product data	Packaging
BCZ 3.81/02/180LR SN BK BX	1941780000	PCB plug-in connector, female plug, 3.81 mm, No. of poles: 2, 180°, Clamping yoke connection, Clamping range, rated connection, max.: 1.5 mm ² , Box	4032248698707	50 pc(s).	IEC: 320 V / 17.5 A / 0.2 - 1.5 mm ² UL: 300 V / 10 A / AWG 28 - AWG 16	Box
BCZ 3.81/02/180LR SN OR BX	1941400000	PCB plug-in connector, female plug, 3.81 mm, No. of poles: 2, 180°, Clamping yoke connection, Clamping range, rated connection, max.: 1.5 mm ² , Box	4032248698325	50 pc(s).	IEC: 320 V / 17.5 A / 0.2 - 1.5 mm ² UL: 300 V / 10 A / AWG 28 - AWG 16	Box
BCZ 3.81/02/180LR SN GN BX	1941590000	PCB plug-in connector, female plug, 3.81 mm, No. of poles: 2, 180°, Clamping yoke connection, Clamping range, rated connection, max.: 1.5 mm ² , Box	4032248698516	50 pc(s).	IEC: 320 V / 17.5 A / 0.2 - 1.5 mm ² UL: 300 V / 10 A / AWG 28 - AWG 16	Box

**OMNIMATE Signal - series BC/SC 3.81
SC 3.81/02/180G 3.2SN BK BX**

Weidmüller Interface GmbH & Co. KG
Klingenbergstraße 16
D-32758 Detmold
Germany
Fon: +49 5231 14-0
Fax: +49 5231 14-292083
www.weidmueller.com

Mating connector (conditionally pluggable)
BCZ 3.81/270F


Female socket connectors with clamping-yoke screw system for connecting wires.

Three wire-outlet directions are available and provide flexible connection-level design options:

- 180° wire parallel to plugging direction
- 90° wire perpendicular and above plugging direction
- 270° wire perpendicular and below plugging direction

There are three housing shapes, covering many different requirements, to choose from:

- Standard housing without flange
- Flange with screw (F)
- Flange featuring Weidmüller's patented release latch (LR) for lock-and-release latching with no strain and no tools needed.

Weidmüller's 3.81-mm-pitch (0.15 inch) plug-in connectors are compatible with the layouts of customary connectors and offer space for labelling and coding.

- 0.20 - 1.5 mm² (IEC) / 28 - 16 AWG (UL)
- 250 V (IEC) / 300 V (UL)
- 17.5 A (IEC) / 10 A (UL)

General ordering data

Type	Order No.	Version	GTIN (EAN)	Qty.	Product data	Packaging
BCZ 3.81/02/270F SN GN BX	1799170000	PCB plug-in connector, female plug, 3.81 mm, No. of poles: 2, 270°, Clamping yoke connection, Clamping range, rated connection, max.: 1.5 mm ² , Box	4032248244065	50 pc(s).	IEC: 320 V / 17.5 A / 0.2 - 1.5 mm ² UL: 300 V / 10 A / AWG 28 - AWG 16	Box
BCZ 3.81/02/270F SN OR BX	1940460000	PCB plug-in connector, female plug, 3.81 mm, No. of poles: 2, 270°, Clamping yoke connection, Clamping range, rated connection, max.: 1.5 mm ² , Box	4032248656370	50 pc(s).	IEC: 320 V / 17.5 A / 0.2 - 1.5 mm ² UL: 300 V / 10 A / AWG 28 - AWG 16	Box
BCZ 3.81/02/270F SN BK BX	1799100000	PCB plug-in connector, female plug, 3.81 mm, No. of poles: 2, 270°, Clamping yoke connection, Clamping range, rated connection, max.: 1.5 mm ² , Box	4032248243990	50 pc(s).	IEC: 320 V / 17.5 A / 0.2 - 1.5 mm ² UL: 300 V / 10 A / AWG 28 - AWG 16	Box

