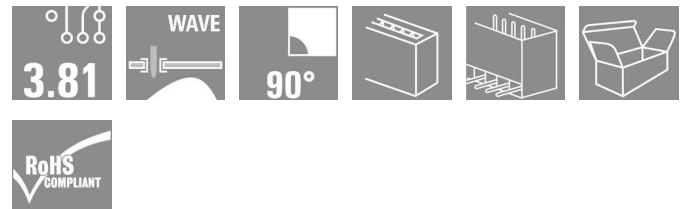


OMNIMATE Signal - series BC/SC 3.81 SC 3.81/08/90G 3.2SN BK BX

Weidmüller Interface GmbH & Co. KG
Klingenbergstraße 16
D-32758 Detmold
Germany
Fon: +49 5231 14-0
Fax: +49 5231 14-292083
www.weidmueller.com



The SC pin header has a parallel (recumbent) plugging direction in relation to the PCB. It is available in closed (G) and screw flange (F) versions.

Weidmüller's 3.81-mm-pitch (0.15 inch) plug-in connectors are compatible with the layouts of standard connectors. They support a flood-light display and offer space for labelling and coding.

- 320 V (IEC) / 300 V (UL)
- 17.5 A (IEC) / 10 A (UL)

General ordering data

Type	SC 3.81/08/90G 3.2SN BK BX
Order No.	1793180000
Version	PCB plug-in connector, male header, closed side, Solder connection, 3.81 mm, No. of poles: 8, 90°, Solder pin length (l): 3.2 mm, tinned, Black, Box
GTIN (EAN)	4032248227679
Qty.	50 pc(s).
Product data	IEC: 320 V / 17.5 A UL: 300 V / 10 A
Packaging	Box

**OMNIMATE Signal - series BC/SC 3.81
SC 3.81/08/90G 3.2SN BK BX**

Weidmüller Interface GmbH & Co. KG
Klingenbergstraße 16
D-32758 Detmold
Germany
Fon: +49 5231 14-0
Fax: +49 5231 14-292083
www.weidmueller.com

Technical data
Dimensions and weights

Net weight 2.2 g

System parameters

Product family		Mounting onto the PCB	
Product family	OMNIMATE Signal - series BC/SC 3.81		Solder connection
Outgoing elbow	90°	Pitch in mm (P)	3.81 mm
Pitch in inches (P)	0.15 inch	No. of poles	8
Solder pin length (l)	3.2 mm	Pin dimensions	d = 1.0 mm, Octagonal
Can be coded	Yes	Number of solder pins per pole	1
Solder eyelet hole diameter (D)	1.2 mm	Solder eyelet hole diameter tolerance (D)+	0.1 mm
L1 in mm	26.67 mm	L1 in inches	1.05 inch
Insulation resistance	10 ⁶ Ω	Touch-safe protection acc. to DIN VDE 0470	IP 20
Touch-safe protection acc. to DIN VDE 57 106	Safe from finger touch		


Material data

Insulating material	PA GF	Colour	Black
Insulating material group	II	UL 94 flammability rating	V-0
CTI	≥ 550	Contact material	Cu-Leg
Contact surface	tinned	Max. relative humidity during storage	93 %

DIN IEC rating data

Rated current, min. no. of poles (Tu=20°C)	17.5 A	Rated current, max. no. of poles (Tu=20°C)	17.5 A
Rated current, number of poles (Tu=40°C), min	17.5 A	Rated current, number of poles (Tu=40°C), max.	16.3 A
Rated voltage for surge voltage class pollution degree III/3	160 V	Rated impulse voltage for surge voltage classcontamination degree III/3	2.5 kV
Rated voltage for surge voltage class pollution degree III/2	160 V	Rated impulse voltage for surge voltage classpollution degree III/2	2.5 kV
Rated voltage for surge voltage class pollution degree II/2	320 V	Rated impulse voltage for surge voltage classpollution degree II/2	2.5 kV
Short-time withstand current resistance	3 x 1s with 76 A		

CSA rating data

Institute (CSA)		Rated voltage (Use group B)	300 V
Rated current (use group B)	10 A	Rated voltage (use group D)	300 V
Rated current (use group D)	10 A		

UL 1059 rating data

Rated voltage (use group B)	300 V	Rated current (use group B)	10 A
Rated voltage (use group D)	300 V	Rated current (use group D)	10 A

**OMNIMATE Signal - series BC/SC 3.81
SC 3.81/08/90G 3.2SN BK BX**

Weidmüller Interface GmbH & Co. KG
Klingenbergstraße 16
D-32758 Detmold
Germany
Fon: +49 5231 14-0
Fax: +49 5231 14-292083
www.weidmueller.com

Technical data

Classifications

ETIM 3.0	EC001284	UNSPSC	30-21-18-10
eClass 4.1	27-26-07-01	eClass 5.1	27-26-07-04
eClass 6.2	27-26-07-04	eClass 7.1	27-44-04-02

Notes

- Notes
- Additional colours on request
 - Gold-plated contact surfaces on request
 - Rated current related to rated cross-section & min. No. of poles.
 - Rated data refer only to the component itself. Clearance and creepage distances to other components are to be designed in accordance with the relevant application standards.
 - P on drawing = pitch

Approvals

Approvals

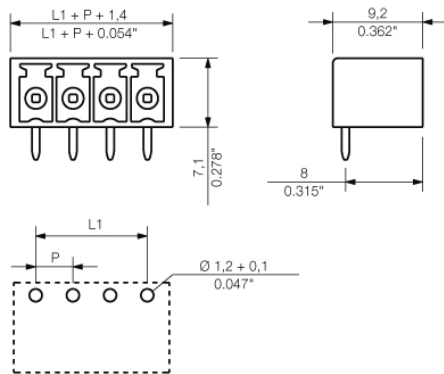


ROHS

Conform

**OMNIMATE Signal - series BC/SC 3.81
SC 3.81/08/90G 3.2SN BK BX**

Weidmüller Interface GmbH & Co. KG
Klingenbergstraße 16
D-32758 Detmold
Germany
Fon: +49 5231 14-0
Fax: +49 5231 14-292083
www.weidmueller.com

Drawings

**OMNIMATE Signal - series BC/SC 3.81
SC 3.81/08/90G 3.2SN BK BX**

Weidmüller Interface GmbH & Co. KG
Klingenbergstraße 16
D-32758 Detmold
Germany
Fon: +49 5231 14-0
Fax: +49 5231 14-292083
www.weidmueller.com

Mating connector (conditionally pluggable)

BCZ 3.81/90F



Female socket connectors with clamping-yoke screw system for connecting wires. Three wire-outlet directions are available and provide flexible connection-level design options:

- 180° wire parallel to plugging direction
- 90° wire perpendicular and above plugging direction
- 270° wire perpendicular and below plugging direction

There are three housing shapes, covering many different requirements, to choose from:

- Standard housing without flange
- Flange with screw (F)
- Flange featuring Weidmüller's patented release latch (LR) for lock-and-release latching with no strain and no tools needed.

Weidmüller's 3.81-mm-pitch (0.15 inch) plug-in connectors are compatible with the layouts of customary connectors and offer space for labelling and coding.

- 0.20 - 1.5 mm² (IEC) / 28 - 16 AWG (UL)
- 250 V (IEC) / 300 V (UL)
- 17.5 A (IEC) / 10 A (UL)

General ordering data

Type	Order No.	Version	GTIN (EAN)	Qty.	Product data	Packaging
BCZ 3.81/08/90F SN BK BX	1798150000	PCB plug-in connector, female plug, 3.81 mm, No. of poles: 8, 90°, Clamping yoke connection, Clamping range, rated connection, max.: 1.5 mm ² , Box	4032248241347	50 pc(s).	IEC: 320 V / 17.5 A / 0.2 - 1.5 mm ² UL: 300 V / 10 A / AWG 28 - AWG 16	Box
BCZ 3.81/08/90F SN GN BX	1798900000	PCB plug-in connector, female plug, 3.81 mm, No. of poles: 8, 90°, Clamping yoke connection, Clamping range, rated connection, max.: 1.5 mm ² , Box	4032248243587	50 pc(s).	IEC: 320 V / 17.5 A / 0.2 - 1.5 mm ² UL: 300 V / 10 A / AWG 28 - AWG 16	Box
BCZ 3.81/08/90F SN OR BX	1940040000	PCB plug-in connector, female plug, 3.81 mm, No. of poles: 8, 90°, Clamping yoke connection, Clamping range, rated connection, max.: 1.5 mm ² , Box	4032248656783	50 pc(s).	IEC: 320 V / 17.5 A / 0.2 - 1.5 mm ² UL: 300 V / 10 A / AWG 28 - AWG 16	Box

**OMNIMATE Signal - series BC/SC 3.81
SC 3.81/08/90G 3.2SN BK BX**

Weidmüller Interface GmbH & Co. KG
Klingenbergstraße 16
D-32758 Detmold
Germany
Fon: +49 5231 14-0
Fax: +49 5231 14-292083
www.weidmueller.com

Mating connector (conditionally pluggable)
BCZ 3.81/180LR


Female socket connectors with clamping-yoke screw system for connecting wires.

Three wire-outlet directions are available and provide flexible connection-level design options:

- 180° wire parallel to plugging direction
- 90° wire perpendicular and above plugging direction
- 270° wire perpendicular and below plugging direction

There are three housing shapes, covering many different requirements, to choose from:

- Standard housing without flange
- Flange with screw (F)
- Flange featuring Weidmüller's patented release latch (LR) for lock-and-release latching with no strain and no tools needed.

Weidmüller's 3.81-mm-pitch (0.15 inch) plug-in connectors are compatible with the layouts of customary connectors and offer space for labelling and coding.

- 0.20 - 1.5 mm² (IEC) / 28 - 16 AWG (UL)
- 250 V (IEC) / 300 V (UL)
- 17.5 A (IEC) / 10 A (UL)

General ordering data

Type	Order No.	Version	GTIN (EAN)	Qty.	Product data	Packaging
BCZ 3.81/08/180LR SN OR BX	1941460000	PCB plug-in connector, female plug, 3.81 mm, No. of poles: 8, 180°, Clamping yoke connection, Clamping range, rated connection, max.: 1.5 mm ² , Box	4032248698387	50 pc(s).	IEC: 320 V / 17.5 A / 0.2 - 1.5 mm ² UL: 300 V / 10 A / AWG 28 - AWG 16	Box
BCZ 3.81/08/180LR SN BK BX	1941840000	PCB plug-in connector, female plug, 3.81 mm, No. of poles: 8, 180°, Clamping yoke connection, Clamping range, rated connection, max.: 1.5 mm ² , Box	4032248698912	50 pc(s).	IEC: 320 V / 17.5 A / 0.2 - 1.5 mm ² UL: 300 V / 10 A / AWG 28 - AWG 16	Box
BCZ 3.81/08/180LR SN GN BX	1941650000	PCB plug-in connector, female plug, 3.81 mm, No. of poles: 8, 180°, Clamping yoke connection, Clamping range, rated connection, max.: 1.5 mm ² , Box	4032248698578	50 pc(s).	IEC: 320 V / 17.5 A / 0.2 - 1.5 mm ² UL: 300 V / 10 A / AWG 28 - AWG 16	Box

**OMNIMATE Signal - series BC/SC 3.81
SC 3.81/08/90G 3.2SN BK BX**

Weidmüller Interface GmbH & Co. KG
Klingenbergstraße 16
D-32758 Detmold
Germany
Fon: +49 5231 14-0
Fax: +49 5231 14-292083
www.weidmueller.com

Mating connector (conditionally pluggable)

BCZ 3.81/180F



Female socket connectors with clamping-yoke screw system for connecting wires. Three wire-outlet directions are available and provide flexible connection-level design options:

- 180° wire parallel to plugging direction
- 90° wire perpendicular and above plugging direction
- 270° wire perpendicular and below plugging direction

There are three housing shapes, covering many different requirements, to choose from:

- Standard housing without flange
- Flange with screw (F)
- Flange featuring Weidmüller's patented release latch (LR) for lock-and-release latching with no strain and no tools needed.

Weidmüller's 3.81-mm-pitch (0.15 inch) plug-in connectors are compatible with the layouts of customary connectors and offer space for labelling and coding.

- 0.20 - 1.5 mm² (IEC) / 28 - 16 AWG (UL)
- 250 V (IEC) / 300 V (UL)
- 17.5 A (IEC) / 10 A (UL)

General ordering data

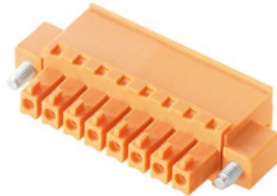
Type	Order No.	Version	GTIN (EAN)	Qty.	Product data	Packaging
BCZ 3.81/08/180F SN BK BX	1793000000	PCB plug-in connector, female plug, 3.81 mm, No. of poles: 8, 180°, Clamping yoke connection, Clamping range, rated connection, max.: 1.5 mm ² , Box	4032248227082	50 pc(s).	IEC: 320 V / 17.5 A / 0.2 - 1.5 mm ² UL: 300 V / 10 A / AWG 28 - AWG 16	Box
BCZ 3.81/08/180F SN OR BX	1941070000	PCB plug-in connector, female plug, 3.81 mm, No. of poles: 8, 180°, Clamping yoke connection, Clamping range, rated connection, max.: 1.5 mm ² , Box	4032248655779	50 pc(s).	IEC: 320 V / 17.5 A / 0.2 - 1.5 mm ² UL: 300 V / 10 A / AWG 28 - AWG 16	Box
BCZ 3.81/08/180F SN GN BX	1793090000	PCB plug-in connector, female plug, 3.81 mm, No. of poles: 8, 180°, Clamping yoke connection, Clamping range, rated connection, max.: 1.5 mm ² , Box	4032248227174	50 pc(s).	IEC: 320 V / 17.5 A / 0.2 - 1.5 mm ² UL: 300 V / 10 A / AWG 28 - AWG 16	Box

**OMNIMATE Signal - series BC/SC 3.81
SC 3.81/08/90G 3.2SN BK BX**

Weidmüller Interface GmbH & Co. KG
Klingenbergstraße 16
D-32758 Detmold
Germany
Fon: +49 5231 14-0
Fax: +49 5231 14-292083
www.weidmueller.com

Mating connector (conditionally pluggable)

BCZ 3.81/270F



Female socket connectors with clamping-yoke screw system for connecting wires. Three wire-outlet directions are available and provide flexible connection-level design options:

- 180° wire parallel to plugging direction
- 90° wire perpendicular and above plugging direction
- 270° wire perpendicular and below plugging direction

There are three housing shapes, covering many different requirements, to choose from:

- Standard housing without flange
- Flange with screw (F)
- Flange featuring Weidmüller's patented release latch (LR) for lock-and-release latching with no strain and no tools needed.

Weidmüller's 3.81-mm-pitch (0.15 inch) plug-in connectors are compatible with the layouts of customary connectors and offer space for labelling and coding.

- 0.20 - 1.5 mm² (IEC) / 28 - 16 AWG (UL)
- 250 V (IEC) / 300 V (UL)
- 17.5 A (IEC) / 10 A (UL)

General ordering data

Type	Order No.	Version	GTIN (EAN)	Qty.	Product data	Packaging
BCZ 3.81/08/270F SN GN BX	1799220000	PCB plug-in connector, female plug, 3.81 mm, No. of poles: 8, 270°, Clamping yoke connection, Clamping range, rated connection, max.: 1.5 mm ² , Box	4032248244119	50 pc(s).	IEC: 320 V / 17.5 A / 0.2 - 1.5 mm ² UL: 300 V / 10 A / AWG 28 - AWG 16	Box
BCZ 3.81/08/270F SN OR BX	1940520000	PCB plug-in connector, female plug, 3.81 mm, No. of poles: 8, 270°, Clamping yoke connection, Clamping range, rated connection, max.: 1.5 mm ² , Box	4032248656318	50 pc(s).	IEC: 320 V / 17.5 A / 0.2 - 1.5 mm ² UL: 300 V / 10 A / AWG 28 - AWG 16	Box
BCZ 3.81/08/270F SN BK BX	1798190000	PCB plug-in connector, female plug, 3.81 mm, No. of poles: 8, 270°, Clamping yoke connection, Clamping range, rated connection, max.: 1.5 mm ² , Box	4032248241385	50 pc(s).	IEC: 320 V / 17.5 A / 0.2 - 1.5 mm ² UL: 300 V / 10 A / AWG 28 - AWG 16	Box

