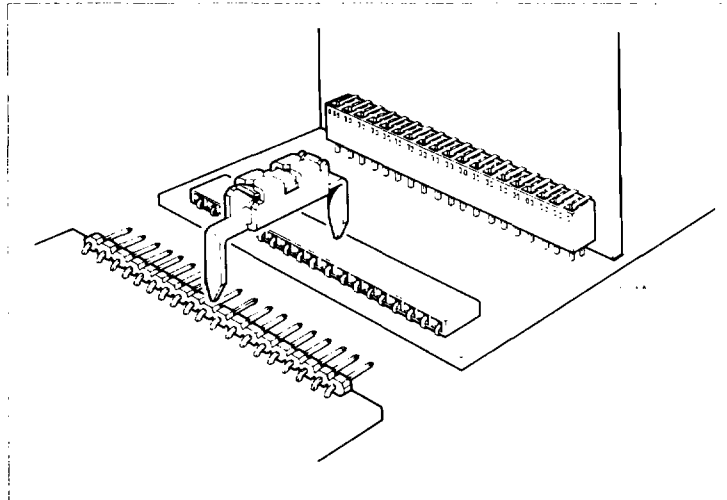


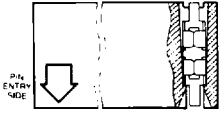
- Highly reliable dual-metal PV contact.
- Available in a variety of spring thicknesses and platings.
- For right-angle p.c. board mounting.
- Two different housing materials: DAP and polyester.
- Connectors made of polyester are stackable end-to-end.
- Mates with 0,64 mm (0.025 inch) square and round pins.



<b>Spacing</b>	3,81 mm (0.150 inch) single and double row	
<b>Polarization</b>	By means of a polarization plug (see "Description")	
<b>Housing</b>	<b>Material</b>	Diallyl Phthalate (DAP) in accordance with MIL-M-14, type SDGF. Color green, or Glass-filled thermoplastic polyester (UL 94 V-0). Color blue
	<b>Insulation resistance</b>	$5 \times 10^4$ M $\Omega$ min.
	<b>Temperature range</b>	DAP : -65° C to +170° C Polyester: -65° C to +125° C
	<b>Withstanding voltage</b>	1500 V rms (sea level)
<b>Contact</b>	<b>Material</b>	<b>Body</b> Brass
		<b>Spring</b> Beryllium copper. Thickness: 0,089 mm (0.0035 inch)
		<b>Finish</b> Contact area: gold over nickel Remainder: preplated with gold flash, or 2,50 $\mu$ m (100 $\mu$ inch) tin/lead
	<b>Current rating</b>	3 A max.
	<b>Resistance</b>	10 m $\Omega$ max. per contact initially; 15 m $\Omega$ max. per contact after tests
	<b>Insertion force (max.)</b>	Gold and tin/lead finish: 3 N (300 gf) per contact
	<b>Withdrawal force (min.)</b>	Gold finish: : 0,4 N (40 gf) per contact Tin/lead finish: 0,5 N (50 gf) per contact
<b>Capacitance</b>	2 pF max.	
<b>Packaging</b>	Tube packed. Min. quantity: 100 connectors. Order in multiples of this quantity	

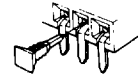
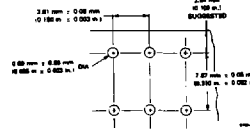
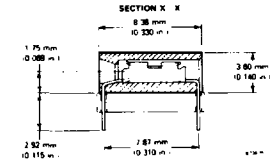
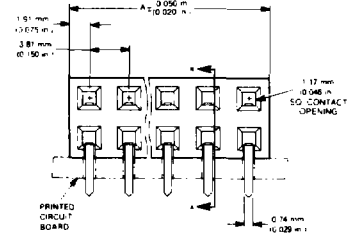
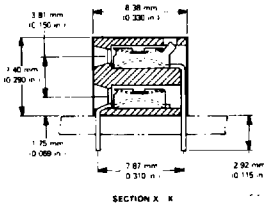
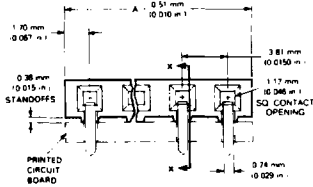
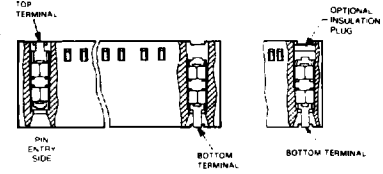
**SINGLE ROW**

66946 Series - 0,38 μm (15 μ in.) Gold, Polyester  
 66947 Series - 0,76 μm (30 μ in.) Gold, Polyester  
 65059 Series - 1,02 μm (40 μ in.) Gold, Polyester  
 or 2,54 μm (100 μ in.) Tin

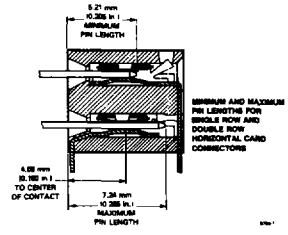


**DOUBLE ROW**

66948 Series - 0,38 μm (15 μ in.) Gold, Phenolic  
 66949 Series - 0,76 μm (30 μ in.) Gold, Phenolic  
 67209 Series - 0,38 μm (15 μ in.) Gold, DAP  
 67210 Series - 0,76 μm (30 μ in.) Gold, DAP  
 65002 Series - 1,02 μm (40 μ in.) Gold, DAP  
 or 1,02 μm (40 μ in.) Gold, Phenolic  
 or 2,54 μm (100 μ in.) Tin, Phenolic  
 65671 Series - 1,02 μm (40 μ in.) Gold, Polyester  
 65672 Series - 2,54 μm (100 μ in.) Tin, Polyester



optional polarization plug 65754-001



Terminations Per Row	Single Row Part Numbers			Dimensions	
	66946-xxx 66947-xxx	65059-xxx		A	
		Gold	Tin	mm	in.
2	-002	-030	-202	7,37	0.290
3	-003	-031	-203	11,18	0.440
4	-004	-032	-204	14,99	0.590
5	-005	-001	-205	18,80	0.740
6	-006	-002	-206	22,61	0.890
7	-007	-003	-207	26,42	1.040
8	-008	-004	-208	30,23	1.190
9	-009	-005	-209	34,04	1.340
10	-010	-006	-210	37,85	1.490
11	-011	-007	-211	41,66	1.640
12	-012	-008	-212	45,47	1.790
13	-013	-009	-213	49,28	1.940
14	-014	-010	-214	53,09	2.090
15	-015	-011	-215	56,90	2.240
16	-016	-012	-216	60,71	2.390
17	-017	-013	-217	64,52	2.540
18	-018	-014	-218	68,33	2.690
19	-019	-015	-219	72,14	2.840
20	-020	-016	-220	75,95	2.990
21	-021	-017	-221	79,76	3.140
22	-022	-018	-222	83,57	3.290
23	-023	-019	-223	87,38	3.440
24	-024	-020	-224	91,19	3.590
25	-025	-021	-225	95,00	3.740
26	-026	-022	-226	98,81	3.890
27	-027	-023	-227	102,62	4.040
28	-028	-024	-228	106,43	4.190
29	-029	-025	-229	110,24	4.340
30	-030	-026	-230	114,05	4.490

**DOUBLE ROW**

**66948 Series - 0,38 μm (15 μ in.) Gold, Phenolic**  
**66949 Series - 0,76 μm (30 μ in.) Gold, Phenolic**  
**67209 Series - 0,38 μm (15 μ in.) Gold, DAP**  
**67210 Series - 0,76 μm (30 μ in.) Gold, DAP**  
**65002 Series - 1,02 μm (40 μ in.) Gold, DAP**  
 or 1,02 μm (40 μ in.) Gold, Phenolic  
 or 2,54 μm (100 μ in.) Tin, Phenolic  
**65671 Series - 1,02 μm (40 μ in.) Gold, Polyester**  
**65672 Series - 2,54 μm (100 μ in.) Tin, Polyester**

Terminations Per Row	Double Row Part Numbers					Dimension	
	66948-xxx* 66949-xxx* 67209-xxx* 67210-xxx*	65002-xxx			65671-xxx 65672-xxx	A	
		DAP Gold	Phenolic Gold    Tin			mm	in.
2	-002	-084	-085	-202	-002	7,62	0.300
3	-003	-086	-087	-203	-003	11,43	0.450
4	-004	-088	-089	-204	-004	15,24	0.600
5	-005	-074	-075	-205	-005	19,05	0.750
6	-006	-076	-077	-206	-006	22,86	0.900
7	-007	-078	-079	-207	-007	26,67	1.050
8	-008	-001	-002	-208	-008	30,48	1.200
9	-009	-003	-004	-209	-009	34,29	1.350
10	-010	-005	-006	-210	-010	38,10	1.500
11	-011	-007	-008	-211	-011	41,91	1.650
12	-012	-009	-010	-212	-012	45,72	1.800
13	-013	-011	-012	-213	-013	49,53	1.950
14	-014	-013	-014	-214	-014	53,34	2.100
15	-015	-015	-016	-215	-015	57,15	2.250
16	-016	-017	-018	-216	-016	60,96	2.400
17	-017	-019	-020	-217	-017	64,77	2.550
18	-018	-021	-022	-218	-018	68,58	2.700
19	-019	-023	-024	-219	-019	72,39	2.850
20	-020	-025	-026	-220	-020	76,20	3.000
21	-021	-027	-028	-221	-021	80,01	3.150
22	-022	-029	-030	-222	-022	83,82	3.300
23	-023	-031	-032	-223	-023	87,63	3.450
24	-024	-033	-034	-224	-024	91,44	3.600
25	-025	-035	-036	-225	-025	95,25	3.750
26	-026	-037	-038	-226	-026	99,06	3.900
27	-027	-039	-040	-227	-027	102,87	4.050
28	-028	-041	-042	-228	-028	106,68	4.200
29	-029	-043	-044	-229	-029	110,49	4.350
30	-030	-045	-046	-230	-030	114,30	4.500
31	-031	-047	-048	-231	-031	118,11	4.650
32	-032	-049	-050	-232	-032	121,92	4.800
33	-033	-051	-052	-233	-033	125,73	4.950
34	-034	-053	-054	-234	-034	129,54	5.100
35	-035	-055	-056	-235	-035	133,35	5.250
36	-036	-057	-058	-236	-036	137,16	5.400
37	-037	-059	-060	-237	-037	140,97	5.550
38	-038	-061	-062	-238	-038	144,78	5.700
39	-039	-063	-064	-239	-039	148,59	5.850
40	-040	-065	-066	-240	-040	152,40	6.000
41	-041	-067	-068	-241	-041	156,21	6.150
42	-042	-092	-093	-242	-042	160,02	6.300
43	-043	-080	-081	-243	-043	163,83	6.450

\*Insulation plugs available installed in individual positions. Order P/N-5xx to designate a connector with insulation plugs installed behind bottom row of terminals.