

Printview: Male connector; with CAGE CLAMP® connection and fixing flanges; for screw or similar mounting types; for parallel or perpendicular mounting; pin spacing 5 mm / 0.197 in; 4-pole - Item No.: 769-604/002-000

WAGO® online catalog / eShop

Male connector; with CAGE CLAMP® connection and fixing flanges; for screw or similar mounting types; for parallel or perpendicular mounting; pin spacing 5 mm / 0.197 in; 4-pole

Item No.: 769-604/002-000



Male connector; with CAGE CLAMP® connection and fixing flanges; for screw or similar mounting types; for parallel or perpendicular mounting; pin spacing 5 mm / 0.197 in; 4-pole

Marking

RoHS ✓
Compliant

Business data

Supplier	WAGO
Item no.	769-604/002-000
EAN	4044918520911
Content	1
Order amount	50
Customer item number	

Notes

Technical data

Miscellaneous

No. of Poles	4
Total number of connection points	4
Total number of potentials	4
Color	gray
Pollution degree (1)	3
Rated voltage EN (1) [V]	500 [V]
Rated surge voltage (1) [kV]	6 [kV]
Nominal current [A]	32 [A]

Printview: Male connector; with CAGE CLAMP® connection and fixing flanges; for screw or similar mounting types; for parallel or perpendicular mounting; pin spacing 5 mm / 0.197 in; 4-pole - Item No.: 769-604/002-000

Technical data	
Connection technology (1)	CAGE CLAMP®
Cross section from (1) [mm ²]	0.08 [mm ²]
Cross section up to (1) [mm ²]	4 [mm ²]
Cross section from (1) [AWG]	28 [AWG]
Cross section up to (1) [AWG]	12 [AWG]
Stripped length from (1) [mm]	8 [mm]
Stripped length up to (1) [mm]	9 [mm]
Stripped length (1) [in]	0.33 [in]
Type of wiring	Front-entry wiring
Fire load [MJ]	0.286 [MJ]
Weight [g]	13.54 [g]
Width [mm]	35.4 [mm]
Width [in]	1.394 [in]
Height [mm]	18.3 [mm]
Height [in]	0.72 [in]
Length [mm]	40.2 [mm]
Length [in]	1.583 [in]
Pin spacing from [mm]	5 [mm]
Pin spacing from [in]	0.197 [in]

Approbation					
Item No.	Registration	Registration no.	Voltage [V]	Current [A]	Cross section [mm ² , AWG]
769-604/002-000	ABS	05-HG476175/3-PDA	500	32	4
769-604/002-000	CSA	154112-1101144	300	20	28-12
769-604/002-000	KEMA	2077750.01	500	32	4
769-604/002-000	UL	E45171	600	20	16-12"
769-604/002-000	UL	E45172	300	20	28-12

Accessories

Printview: Male connector; with CAGE CLAMP® connection and fixing flanges; for screw or similar mounting types; for parallel or perpendicular mounting; pin spacing 5 mm / 0.197 in; 4-pole - Item No.: 769-604/002-000

Accessories

Coding

Item no.	Description	Pack. unit (Sub Pack)
769-435	Coding pin; for coding of female plugs; for carrier terminal blocks / male connectors	25

Strain relief

Item no.	Description	Pack. unit (Sub Pack)
769-1604	Snap-on type strain relief housing; consists of strain relief support and housing; 4-pole	25
769-410	Strain relief plate; 1-pole; snap-on type for female plugs	25
769-412	Strain relief plate; 4- to 5-pole; snap-on type for female plugs; snap-on type for male connectors with CAGE CLAMP® connection	25

Marking accessories

Item no.	Description	Pack. unit (Sub Pack)
2009-145	Mini-WSB Inline; plain; 1,700 Mini-WSB markers (5 mm) on roll; stretchable 5 - 5.2 mm	1
248-501	Miniature WSB quick marking system; plain; Marker width 5 mm; 10 strips with 10 markers per card	5
248-501/000-002	Miniature WSB quick marking system; plain; Marker width 5 mm; 10 strips with 10 markers per card	5
248-501/000-005	Miniature WSB quick marking system; plain; Marker width 5 mm; 10 strips with 10 markers per card	5
248-501/000-006	Miniature WSB quick marking system; plain; Marker width 5 mm; 10 strips with 10 markers per card	5
248-501/000-007	Miniature WSB quick marking system; plain; Marker width 5 mm; 10 strips with 10 markers per card	5
248-501/000-012	Miniature WSB quick marking system; plain; Marker width 5 mm; 10 strips with 10 markers per card	5
248-501/000-017	Miniature WSB quick marking system; plain; Marker width 5 mm; 10 strips with 10 markers per card	5
248-501/000-023	Miniature WSB quick marking system; plain; Marker width 5 mm; 10 strips with 10 markers per card	5
248-501/000-024	Miniature WSB quick marking system; plain; Marker width 5 mm; 10 strips with 10 markers per card	5

Printview: Male connector; with CAGE CLAMP® connection and fixing flanges; for screw or similar mounting types; for parallel or perpendicular mounting; pin spacing 5 mm / 0.197 in; 4-pole - Item No.: 769-604/002-000

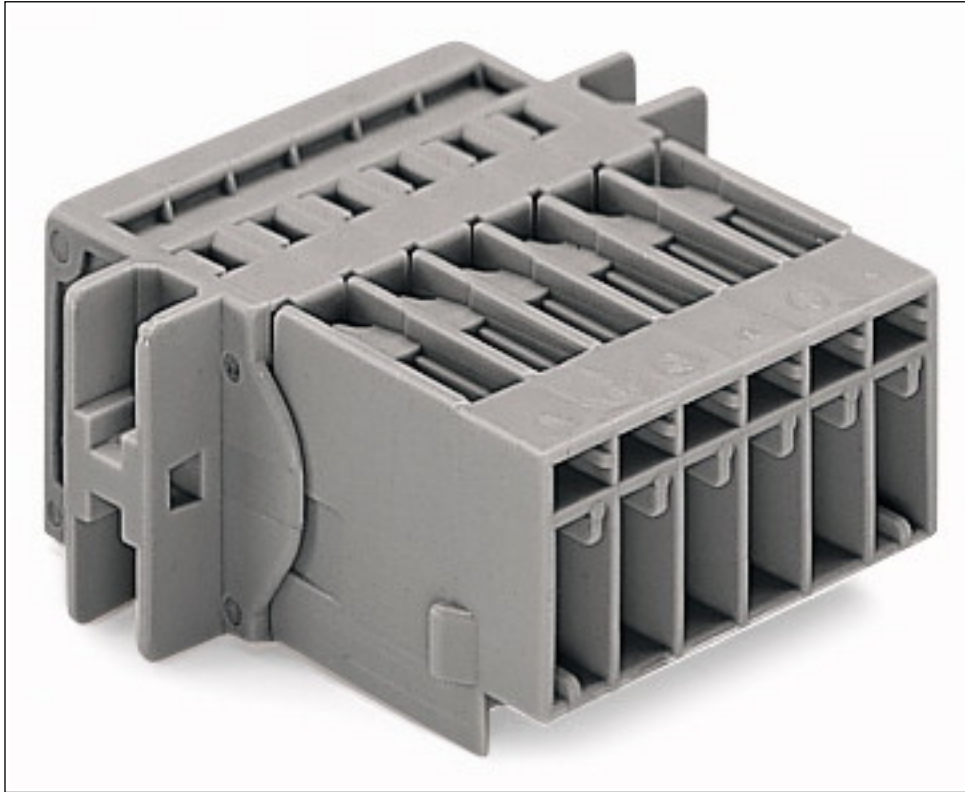
Accessories

General accessory

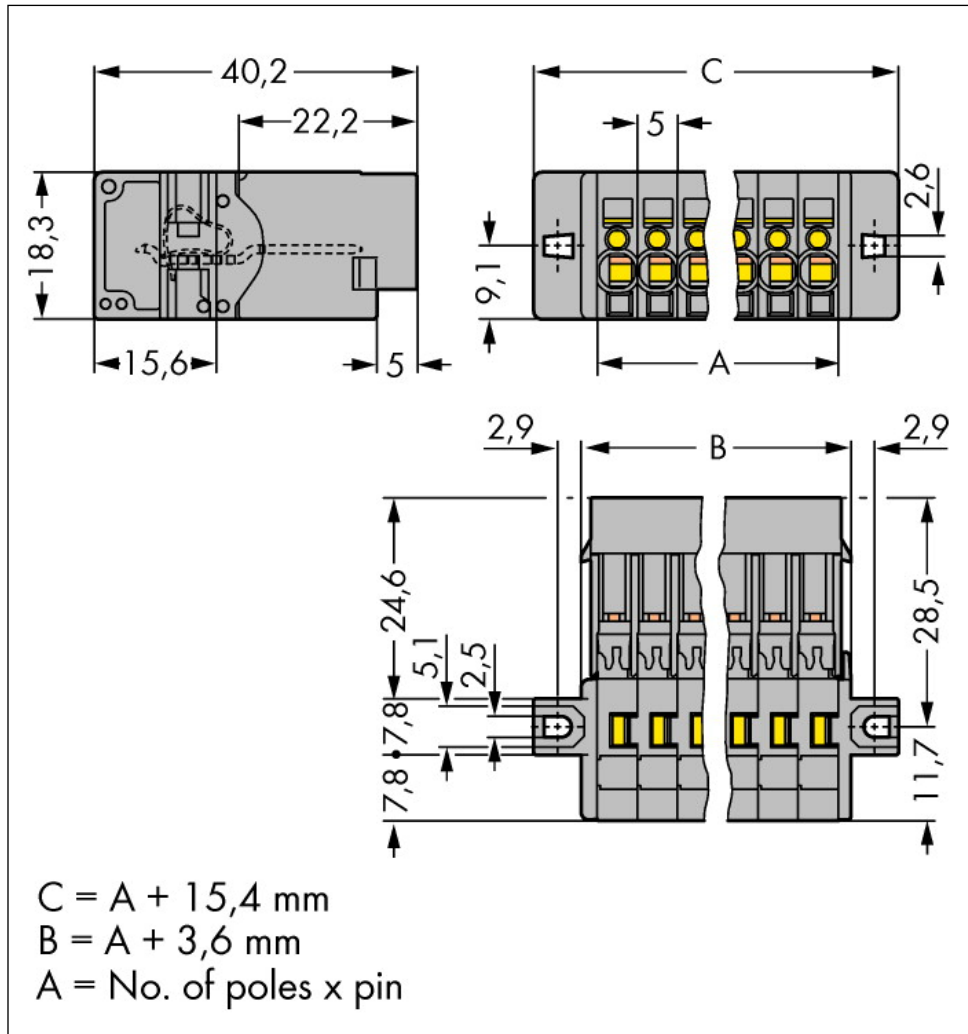
Item no.	Description	Pack. unit (Sub Pack)
769-434	Push-button; loose; for female and male connectors with CAGE CLAMP® connection	100
769-499	Fixing screw M2.5 x 16; and hexagon nut M2.5	25

Printview: Male connector; with CAGE CLAMP® connection and fixing flanges; for screw or similar mounting types; for parallel or perpendicular mounting; pin spacing 5 mm / 0.197 in; 4-pole - Item No.: 769-604/002-000

Images & drawings



Printview: Male connector; with CAGE CLAMP® connection and fixing flanges; for screw or similar mounting types; for parallel or perpendicular mounting; pin spacing 5 mm / 0.197 in; 4-pole - Item No.: 769-604/002-000



Address

WAGO Kontakttechnik GmbH & Co. KG

Hansastr. 27

32423 Minden

Telefon: 0571/887-0

Fax: 0571/887-169

<http://www.wago.com>

© WAGO Kontakttechnik GmbH & Co. KG

Technische Änderungen und Irrtümer vorbehalten.