



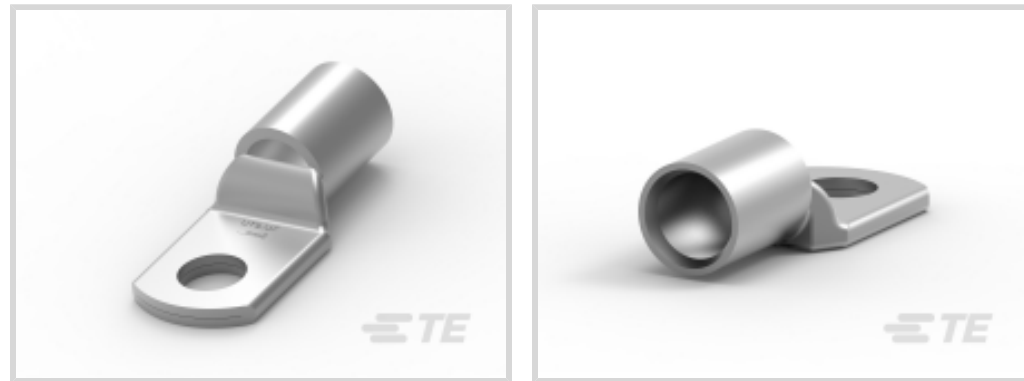
UTILUX

TE Internal #: 119390-000

Compression Connectors, Asia / Australia, New Zealand & Pacific Islands, Compression, ≤ 1 kV, Copper, Hexagonal Crimping, Copper, Indoor Use

[View on TE.com >](#)

Energy & Power > Power Systems Connectors > Compression Connectors



Compression Connector Product Availability: **Asia, Australia, New Zealand & Pacific Islands**

Compression Connector Technology: **Compression**

Compression Connector Voltage Class: **≤ 1 kV**

Compression Connector Conductor Material: **Copper**

Conductor Cross-Section: **10 mm²**

Features

Product Type Features

| | |
|------------------------------------|--------------|
| Compression Connector Technology | Compression |
| Compression Connector Material | Copper |
| Underground Network Component Type | Terminal Lug |

Configuration Features

| | |
|-----------------|---|
| Number of Holes | 2 |
|-----------------|---|

Electrical Characteristics

| | |
|-------------------------------------|--------|
| Compression Connector Voltage Class | ≤ 1 kV |
|-------------------------------------|--------|

Body Features

| | |
|--|----------|
| Barrel Type | Standard |
| Compact Format | No |
| Compression Connector Conductor Material | Copper |
| Copper Palm | Yes |

Contact Features

| | |
|------------|--------------------|
| Crimp Type | Hexagonal Crimping |
|------------|--------------------|

Dimensions

| | |
|---------------|------------------|
| Lug Width | 11.9 mm[.468 in] |
| Barrel Length | 15 mm[.59 in] |



| | |
|---------------------------------|--------------------|
| Lug Length | 58 mm[2.283 in] |
| Barrel Diameter | 4.7 mm[.185 in] |
| Conductor Cross-Section | 10 mm ² |
| Palm Hole Diameter | 6.5 |
| Compression Connector Stud Size | M6 |

Operation/Application

| | |
|-------------|-----|
| Indoor Use | Yes |
| Outdoor Use | Yes |

Product Availability

| | |
|--|--|
| Compression Connector Product Availability | Asia, Australia, New Zealand & Pacific Islands |
|--|--|

Product Compliance


[For compliance documentation, visit the product page on TE.com>](#)

| | |
|---|---|
| EU RoHS Directive 2011/65/EU | Compliant |
| EU ELV Directive 2000/53/EC | Not Yet Reviewed |
| China RoHS 2 Directive MIIT Order No 32, 2016 | No Restricted Materials Above Threshold |
| EU REACH Regulation (EC) No. 1907/2006 | Current ECHA Candidate List: JAN 2024 (240) Candidate List Declared Against: JAN 2024 (240) Does not contain REACH SVHC |
| Halogen Content | Low Halogen - Br, Cl, F, I < 900 ppm per homogenous material. Also BFR/CFR/PVC Free |
| Solder Process Capability | Not applicable for solder process capability |


Product Compliance Disclaimer

This information is provided based on reasonable inquiry of our suppliers and represents our current actual knowledge based on the information they provided. This information is subject to change. The part numbers that TE has identified as EU RoHS compliant have a maximum concentration of 0.1% by weight in homogenous materials for lead, hexavalent chromium, mercury, PBB, PBDE, DBP, BBP, DEHP, DIBP, and 0.01% for cadmium, or qualify for an exemption to these limits as defined in the Annexes of Directive 2011/65/EU (RoHS2). Finished electrical and electronic equipment products will be CE marked as required by Directive 2011/65/EU. Components may not be CE marked. Additionally, the part numbers that TE has identified as EU ELV compliant have a maximum concentration of 0.1% by weight in homogenous materials for lead, hexavalent chromium, and mercury, and 0.01% for cadmium, or qualify for an exemption to these limits as defined in the Annexes of Directive 2000/53/EC (ELV). Regarding the REACH Regulation, the information TE provides on SVHC in articles for this part number is based on the latest European Chemicals Agency (ECHA) 'Guidance on requirements for substances in articles' posted at this URL: <https://echa.europa.eu/guidance-documents/guidance-on-reach>

Compatible Parts



TE Part # 2107475-2
 UNIPRESS 6/120 +COF+CHARG



TE Part # 2107725-1
 AUTOPRESS L62+ COF+CHARG



TE Part # 2107730-1
 AutoPress 80 18V+COF+CHARG



TE Part # 2107733-4
 AUTOPRESS C120 18V+COF+CHARG
 110V

Customers Also Bought



TE Part #3-1879351-7
 RR01 5% 91K AMMO



TE Part #EN3750-775
 TCTS-3/0-1/2-U



TE Part #EN3750-799
 TCTS-500-1/2-U



TE Part #6-1393139-3
 MDR-5061=MDR



TE Part #8-1437470-5
 SSC12AIA=120VAC 50/60HZ 3/60 M



TE Part #2-326111-1
 AMPOWER Terminal Without Stud
 Hole

Documents

Product Drawings

CG10LPM6-20/1

English

Datasheets & Catalog Pages

EPP-2487-DDS18-AU-2_16-CGLP-UTILUX

English