



Energy & Power > Power Systems Connectors > Compression Connectors



Product Availability: **Asia, Australia, New Zealand & Pacific Islands**

Installation Technology: **Compression**

Voltage Class: **≤ 35 kV, ≤ 1 kV**

Compatible Conductor Material: **Aluminum, Copper**

Crimp Type: **Hexagonal Crimping**

Features

Product Type Features

Installation Technology	Compression
-------------------------	-------------

Electrical Characteristics

Voltage Class	≤ 35 kV, ≤ 1 kV
---------------	-----------------

Body Features

Conductor Type	Stranded
Compression Barrel Type	Standard
Compatible Conductor Material	Aluminum, Copper
Primary Product Material	Aluminum, Copper

Contact Features

Crimp Type	Hexagonal Crimping
------------	--------------------

Dimensions

Barrel Length	120 mm[4.72 in]
Barrel Inside Diameter	13 mm, 15 mm[.511 in][.59 in]
Barrel Outside Diameter	20.5 mm, 21.5 mm[.807 in][.846 in]
Compatible Conductor Range	250 – 250 AWG/kcmil, 3/0 – 3/0 AWG/kcmil
Compatible Conductor Cross-Section Range	95 mm ² , 120 mm ²

Operation/Application



Power Component Application Type	Indoor, Outdoor
Compression Connector Product Type	Terminal Links

Product Availability

Product Availability	Asia, Australia, New Zealand & Pacific Islands
----------------------	--

Product Compliance

[For compliance documentation, visit the product page on TE.com>](#)

EU RoHS Directive 2011/65/EU	Compliant
EU ELV Directive 2000/53/EC	Out of Scope
China RoHS 2 Directive MIIT Order No 32, 2016	有害物质含量符合标准要求 No Restricted Substance(s) Above Threshold
EU REACH Regulation (EC) No. 1907/2006	Current ECHA Candidate List: JUNE 2025 (250) Candidate List Declared Against: JUNE 2025 (250) Does not contain REACH SVHC
Halogen Content	Low Halogen - Br, Cl, F < 900 ppm per homogenous material. Also BFR/CFR/PVC Free
Solder Process Capability	Not applicable for solder process capability

Product Compliance Disclaimer

This information is provided based on reasonable inquiry of our suppliers and represents our current actual knowledge based on the information they provided. This information is subject to change. The part numbers that TE has identified as EU RoHS compliant have a maximum concentration of 0.1% by weight in homogenous materials for lead, hexavalent chromium, mercury, PBB, PBDE, DBP, BBP, DEHP, DIBP, and 0.01% for cadmium, or qualify for an exemption to these limits as defined in the Annexes of Directive 2011/65/EU (RoHS2). Finished electrical and electronic equipment products will be CE marked as required by Directive 2011/65/EU. Components may not be CE marked. Additionally, the part numbers that TE has identified as EU ELV compliant have a maximum concentration of 0.1% by weight in homogenous materials for lead, hexavalent chromium, and mercury, and 0.01% for cadmium, or qualify for an exemption to these limits as defined in the Annexes of Directive 2000/53/EC (ELV). Regarding the REACH Regulation, the information TE provides on SVHC in articles for this part number is based on the latest European Chemicals Agency (ECHA) 'Guidance on requirements for substances in articles' posted at this URL: <https://echa.europa.eu/guidance-documents/guidance-on-reach>

Compatible Parts



TE Part # 2107730-1
AutoPress 80 18V+COF+CHARG



TE Part # 2107733-4
AutoPress C120 18V+COF+CHARG 110V



TE Part # 2107475-2
UNIPRESS 6/120 +COF+CHARG



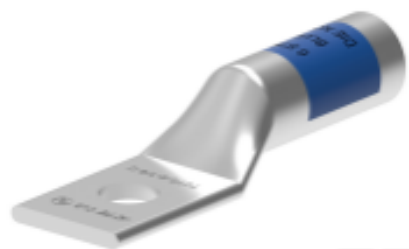
TE Part # 2107725-1
AutoPress L62+ COF+CHARG

Also in the Series | UTILUX BK



Compression Connectors(54)

Customers Also Bought



TE Part #EN3750-775
TCTS-3/0-1/2-U



TE Part #EN3750-799
TCTS-500-1/2-U



TE Part #325712
Terminal, AMPPOWER 250MCM 0



TE Part #2-326111-1
Terminal, AMPPOWER UNPL 500MCM 0



TE Part #1-1393139-8
MDR-170-1=MDR



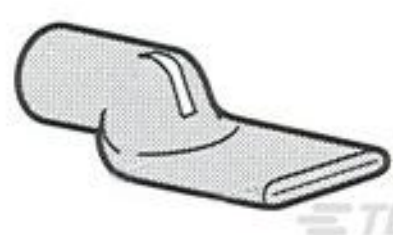
TE Part #6-1393139-3
MDR-5061=MDR



TE Part #2-1423159-2
7012PBX=RLY,STD,ON,2P,125VDC,



TE Part #8-1437470-5
SSC12AIA=120VAC 50/60HZ 3/60 M



TE Part #325308
Terminal, AMPPOWER 1/0 0



TE Part #6-1393139-2
MDR-5060=MDR



Documents

Product Drawings

[BK120-95/1](#)

English

Datasheets & Catalog Pages

[EPP-2487-DDS31-AU-2_16-BK-UTILUX](#)

English