



AST | AST4300

TE Internal #: 11192479-00

Industrial Pressure Transducer, Gauge, 4 – 20 mA Output Signal, 2X, Min Proof Pressure Range, AST4300

[View on TE.com >](#)

Sensors > Pressure Sensors > Pressure Transducers > Non-Incendive Pressure Transducer



Pressure Sensor Type: **Industrial Pressure Transducer**

Pressure Type: **Gauge**

Hazardous Area Approval: **Non-Incendive**

Output Signal Type: **4 – 20 mA**

Pressure: **100 bar [1450.3 psi]**

[All Non-Incendive Pressure Transducer \(103\)](#)

Features

Product Type Features

Pressure Sensor Type	Industrial Pressure Transducer
Pressure Type	Gauge

Configuration Features

Electrical Connection	Conduit 10 ft
-----------------------	---------------

Electrical Characteristics

Supply Voltage Range	10 – 28 V
----------------------	-----------

Body Features

Port Material	316L
---------------	------

Dimensions

Product Diameter	22.22 mm[.875 in]
Product Length	3063.2 mm[120.6 in]

Usage Conditions

Pressure	100 bar[1450.3 psi]
Operating Temperature Range	-40 – 80 °C[-40 – 176 °F]

Operation/Application

Output Signal Type	4 – 20 mA
--------------------	-----------



Proof Pressure Range	2X, Min
----------------------	---------

Pressure Accuracy	±0.25% FSO
-------------------	------------

Industry Standards

Compatible With Agency/Standards Products	UL
---	----

Hazardous Area Approval	Non-Incendive
-------------------------	---------------

Other

Sensor Options	Increased Proof Pressure
----------------	--------------------------

Port Fitting	1/4 MNPT
--------------	----------

Product Compliance

[For compliance documentation, visit the product page on TE.com>](#)

EU RoHS Directive 2011/65/EU	Not Yet Reviewed
------------------------------	------------------

EU ELV Directive 2000/53/EC	Not Yet Reviewed
-----------------------------	------------------

China RoHS 2 Directive MIIT Order No 32, 2016	未针对中国 RoHS 符合性进行审核 Not reviewed for China RoHS compliance
---	---

EU REACH Regulation (EC) No. 1907/2006	<p>Current ECHA Candidate List: JUNE 2025 (250)</p> <p>Candidate List Declared Against: JUNE 2025 (250)</p> <p>SVHC > Threshold:</p> <p>2-methyl-1-(4-methylthiophenyl)-2-morpholinopropan-1-one (3.9% in 17980139677)</p> <p>Pb (80.3% in Component Part)</p>
--	---

Article Safe Usage Statements:
Do not eat, drink or smoke when using this product. Wash thoroughly after handling. Recycle if possible and dispose of the article by following all applicable governmental regulations relevant to your geographic location.

Halogen Content	Not Yet Reviewed for halogen content
-----------------	--------------------------------------

Solder Process Capability	Not reviewed for solder process capability
---------------------------	--

Product Compliance Disclaimer

This information is provided based on reasonable inquiry of our suppliers and represents our current actual knowledge based on the information they provided. This information is subject to change. The part numbers that TE has identified as EU RoHS compliant have a maximum concentration of 0.1% by weight in homogenous materials for lead, hexavalent chromium, mercury, PBB, PBDE, DBP, BBP, DEHP, DIBP, and 0.01% for cadmium, or qualify for an exemption to these limits as defined in the Annexes of Directive 2011/65/EU (RoHS2). Finished electrical and electronic equipment products will be CE marked as required by Directive 2011/65/EU. Components may not be CE marked. Additionally, the part numbers that TE has identified as EU ELV compliant have a maximum concentration of 0.1% by weight in homogenous materials for lead, hexavalent chromium, and mercury, and 0.01% for cadmium, or qualify for an exemption to these limits as defined in the Annexes of Directive 2000/53/EC (ELV). Regarding the REACH Regulations, TE's information on SVHC in articles for this part number is still based on the European Chemical Agency (ECHA) 'Guidance on requirements for substances in articles' (Version: 2, April 2011), applying the 0.1% weight on weight concentration threshold at the finished product level. TE is aware of the European Court of Justice ruling of September 10th, 2015 also known as O5A (Once An Article Always An Article) stating that, in case of 'complex object', the threshold for a SVHC must be applied to both the product as a whole and simultaneously to each of the articles forming part of its composition. TE has evaluated this ruling

based on the new ECHA "Guidance on requirements for substances in articles" (June 2017, version 4.0) and will be updating its statements accordingly.

Compatible Parts



TE Part # CAT-PTT0043
Non-Incendive Pressure Transducer



TE Part # 11105668-00
AST4300A00050P4P4000:CTO-13000000-03

Also in the Series | **AST4300**



Industrial Pressure Transducers(103)



Pressure Transducers(103)

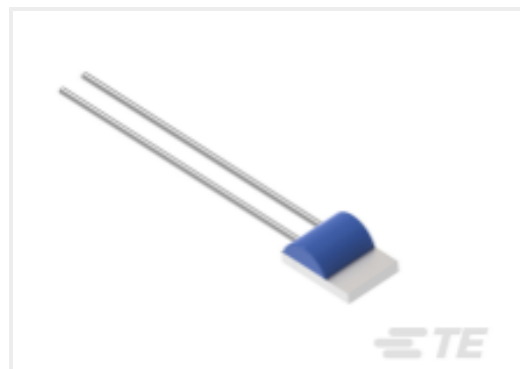
Customers Also Bought



TE Part #86-100G-R
100 PSIG RIBBON CABLE MV PRESSURE SENSOR



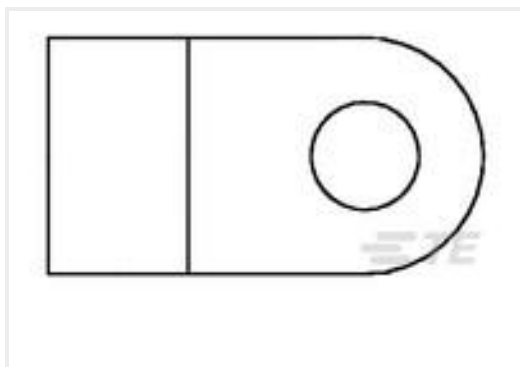
TE Part #CJ1465-000
55AC8113-22-9/96-9-9CS2275



TE Part #NB-PTCO-163
Pt1000, 2.0x2.3, Class C, PTFC102C1A0



TE Part #NB-PTCO-159
Pt100, 2.0x2.3, Class C, PTFC101C1A0



TE Part #132005-1
STRATO-THERM, HR, FLAG, 12-10, M4 (#8)



TE Part #1-1625893-4
5W SM M/OX 2% 27R



TE Part #7-1879350-5
RR01 5% 270R AMMO



TE Part #4-1879355-9
RR03 5% 430K AMMO



Documents

CAD Files

[3D PDF](#)

3D

Customer View Model

[ENG_CVM_CVM_11192479-00_A.2d_dxf.zip](#)

English

Customer View Model

[ENG_CVM_CVM_11192479-00_A.3d_igs.zip](#)

English

Customer View Model

[ENG_CVM_CVM_11192479-00_A.3d_stp.zip](#)

English

By downloading the CAD file I accept and agree to the [Terms and Conditions](#) of use.

Datasheets & Catalog Pages

[AST4300 Pressure Transducer Datasheet](#)

English