

TE Internal #: 11108825-00

TE Internal Description: AST4600AG0500P4U1000:CTO-13000000-00

Explosion Proof Pressure Transducer (Ex db IIC T5 Gb)

[View on TE.com >](#)



All Explosion Proof Pressure Transducer (Ex db IIC T5 Gb) (31)

Product Compliance

[For compliance documentation, visit the product page on TE.com>](#)

EU RoHS Directive 2011/65/EU	Compliant with Exemptions
EU ELV Directive 2000/53/EC	Compliant with Exemptions
China RoHS 2 Directive MIIT Order No 32, 2016	有害物质含量超出标准 Restricted Substance(s) Above Threshold
EU REACH Regulation (EC) No. 1907/2006	Current ECHA Candidate List: JUNE 2025 (250) Candidate List Declared Against: JUNE 2025 (250) SVHC > Threshold: 2-methyl-1-(4-methylthiophenyl)-2-morpholinopropan-1-one (3.9% in 17980139677) Pb (80.3% in Component Part) <b>Article Safe Usage Statements:</b> Do not eat, drink or smoke when using this product. Wash thoroughly after handling. Recycle if possible and dispose of the article by following all applicable governmental regulations relevant to your geographic location.
Halogen Content	Not Yet Reviewed for halogen content
Solder Process Capability	Not reviewed for solder process capability

Product Compliance Disclaimer

This information is provided based on reasonable inquiry of our suppliers and represents our current actual knowledge based on the information they provided. This information is subject to change. The part numbers that TE has identified as EU RoHS compliant have a maximum concentration of 0.1% by weight in homogenous materials for lead, hexavalent chromium, mercury, PBB, PBDE, DBP, BBP, DEHP, DIBP, and 0.01% for cadmium, or qualify for an exemption to these limits as defined in the Annexes of Directive 2011/65/EU (RoHS2). Finished electrical and electronic equipment products will be CE marked as required by Directive 2011/65/EU. Components may not be CE marked. Additionally, the part numbers that TE has identified as EU ELV compliant have a maximum concentration of 0.1% by weight in homogenous materials for lead, hexavalent chromium, and mercury, and 0.01% for cadmium, or qualify for an exemption to these limits as defined in the Annexes of Directive 2000/53/EC (ELV). Regarding the REACH Regulations, TE's information on SVHC in articles for this part number is still based on the European Chemical Agency (ECHA) 'Guidance on requirements for substances in articles' (Version: 2, April 2011), applying the 0.1% weight on weight concentration threshold at the finished product level. TE is aware of the European Court of Justice ruling of September 10th, 2015 also known as O5A (Once An Article Always An Article) stating that, in case of 'complex object', the threshold for a SVHC must be applied to both the product as a whole and simultaneously to each of the articles forming part of its composition. TE has evaluated this ruling based on the new ECHA "Guidance on requirements for substances in articles" (June 2017, version 4.0) and will be updating its statements accordingly.

## Compatible Parts



TE Part # CAT-PTT0053  
Explosion Proof Pressure Transducer  
(Ex db IIC T5 Gb)

## Customers Also Bought



TE Part #NB-PTCO-159  
Pt100, 2.0x2.3, Class C, PTFC101C1A0



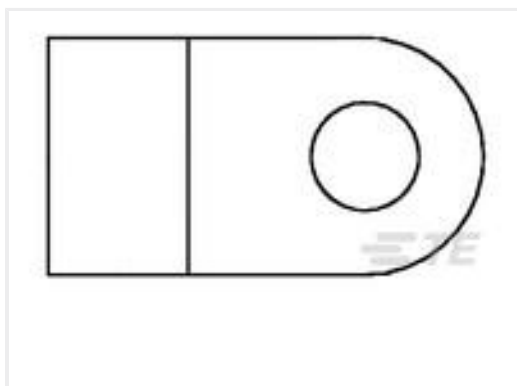
TE Part #86-100G-R  
100 PSIG RIBBON CABLE MV  
PRESSURE SENSOR



TE Part #CJ1465-000  
55AC8113-22-9/96-9-9CS2275



TE Part #NB-PTCO-163  
Pt1000, 2.0x2.3, Class C, PTFC102C1A0



TE Part #132005-1  
STRATO-THERM, HR, FLAG, 12-10, M4  
(#8)



TE Part #1-1625893-4  
5W SM M/OX 2% 27R



TE Part #7-1879350-5  
RR01 5% 270R AMMO



TE Part #4-1879355-9  
RR03 5% 430K AMMO



TE Part #1-1879447-8  
TE 200W 27R 5% Bracket



TE Part #2-2329383-5  
PB ON/OFF FC BLU M1 TERM IP68

## Documents

[CAD Files](#)

[3D PDF](#)

[3D](#)

[Customer View Model](#)

[ENG\\_CVM\\_CVM\\_11108825-00\\_A.2d\\_dxf.zip](#)

English



Customer View Model

[ENG\\_CVM\\_CVM\\_11108825-00\\_A.3d\\_igs.zip](#)

English

Customer View Model

[ENG\\_CVM\\_CVM\\_11108825-00\\_A.3d\\_stp.zip](#)

English

By downloading the CAD file I accept and agree to the [Terms and Conditions](#) of use.

**Datasheets & Catalog Pages**

[AST4600 Datasheet](#)

English