



AST4500/4510

TE Internal #: 11108440-00

TE Internal Description: 7.5 psi, 1/2MNPT, 4-20mA, 316L, 35ft Cab

IS Rated Submersible Transducer

[View on TE.com >](#)

Sensors > Pressure Sensors > Pressure Transducers > IS Rated Submersible Transducer



Pressure Sensor Type: **Industrial Pressure Transducer, Submersible Pressure Transducer**

Pressure Type: **Gauge**

Supply Voltage Range: **10 – 28 V**

Output Signal Type: **4 – 20 mA**

Proof Pressure Range: **2X, Min**

[All IS Rated Submersible Transducer \(33\)](#)

## Features

### Product Type Features

Pressure Sensor Type	Industrial Pressure Transducer, Submersible Pressure Transducer
----------------------	---

Pressure Type	Gauge
---------------	-------

### Configuration Features

Electrical Connection	Conduit 35 ft
-----------------------	---------------

### Electrical Characteristics

Supply Voltage Range	10 – 28 V
----------------------	-----------

### Body Features

Port Material	316L
---------------	------

### Operation/Application

Output Signal Type	4 – 20 mA
--------------------	-----------

Proof Pressure Range	2X, Min
----------------------	---------

Pressure Accuracy	±0.25% FSO
-------------------	------------

### Other

Sensor Options	IP68 Protection
----------------	-----------------

Port Fitting	Nose Cone
--------------	-----------



## Product Compliance

[For compliance documentation, visit the product page on TE.com>](#)

EU RoHS Directive 2011/65/EU	Compliant
EU ELV Directive 2000/53/EC	Compliant with Exemptions
China RoHS 2 Directive MIIT Order No 32, 2016	No Restricted Materials Above Threshold
EU REACH Regulation (EC) No. 1907/2006	Current ECHA Candidate List: JAN 2025 (247) Candidate List Declared Against: JAN 2022 (223) Does not contain REACH SVHC
Halogen Content	Not Yet Reviewed for halogen content
Solder Process Capability	Not reviewed for solder process capability

### Product Compliance Disclaimer

This information is provided based on reasonable inquiry of our suppliers and represents our current actual knowledge based on the information they provided. This information is subject to change. The part numbers that TE has identified as EU RoHS compliant have a maximum concentration of 0.1% by weight in homogenous materials for lead, hexavalent chromium, mercury, PBB, PBDE, DBP, BBP, DEHP, DIBP, and 0.01% for cadmium, or qualify for an exemption to these limits as defined in the Annexes of Directive 2011/65/EU (RoHS2). Finished electrical and electronic equipment products will be CE marked as required by Directive 2011/65/EU. Components may not be CE marked. Additionally, the part numbers that TE has identified as EU ELV compliant have a maximum concentration of 0.1% by weight in homogenous materials for lead, hexavalent chromium, and mercury, and 0.01% for cadmium, or qualify for an exemption to these limits as defined in the Annexes of Directive 2000/53/EC (ELV). Regarding the REACH Regulation, the information TE provides on SVHC in articles for this part number is based on the latest European Chemicals Agency (ECHA) 'Guidance on requirements for substances in articles' posted at this URL: <https://echa.europa.eu/guidance-documents/guidance-on-reach>

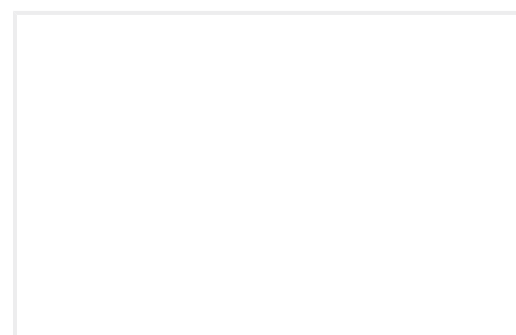
## Also in the Series | [AST4500/4510](#)



Industrial Pressure Transducers(33)

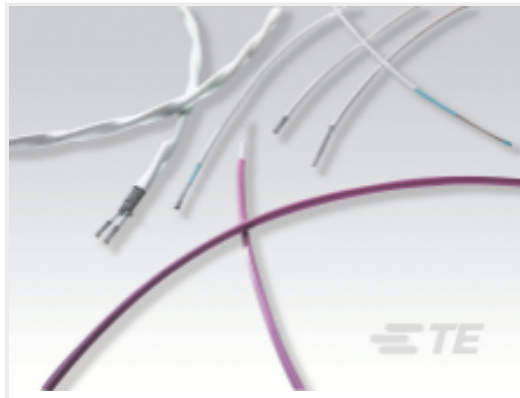


Pressure Transducers(33)



Submersible Pressure Transducers(33)

## Customers Also Bought



TE Part #CJ1465-000  
55AC8113-22-9/96-9-9CS2275



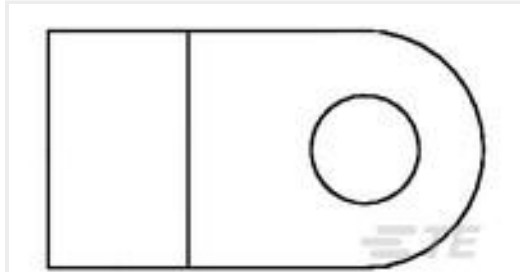
TE Part #86-100G-R  
100 PSIG RIBBON CABLE MV  
PRESSURE SENSOR



TE Part #NB-PTCO-163  
Pt1000, 2.0x2.3, Class C, PTFC102C1A0



TE Part #NB-PTCO-159  
Pt100, 2.0x2.3, Class C, PTFC101C1A0



TE Part #132005-1  
STRATO-THERM, HR, FLAG, 12-10, M4  
(#8)



TE Part #1-1625893-4  
5W SM M/OX 2% 27R



TE Part #7-1879350-5  
RR01 5% 270R AMMO



TE Part #4-1879355-9  
RR03 5% 430K AMMO



TE Part #1-1879447-8  
TE 200W 27R 5% Bracket



TE Part #2-2329383-5  
PB ON/OFF FC BLU M1 TERM IP68

## Documents

### CAD Files

#### 3D PDF

3D

#### Customer View Model

[ENG\\_CVM\\_CVM\\_11108440-00\\_A.2d\\_dxf.zip](#)

English

#### Customer View Model

[ENG\\_CVM\\_CVM\\_11108440-00\\_A.3d\\_igs.zip](#)

English

#### Customer View Model

[ENG\\_CVM\\_CVM\\_11108440-00\\_A.3d\\_stp.zip](#)

English

By downloading the CAD file I accept and agree to the [Terms and Conditions](#) of use.

### Datasheets & Catalog Pages

[AST4500/AST4510 Datasheet](#)

English