

## Weatherproof Fixture

**Features and benefits:**

- Suitable for use in wet/damp locations
- Designed for indoor or outdoor use
- 20.25 cu. in. capacity
- Easy to install
- Non-metallic – won't rust or fade
- One-piece design
- Approved for through-branch wiring



Base



Cat. No.	Hub size (in.)	Std. Ctn.	Std. Wt. (lbs.)
E962E	3/4	6	4.5

## Weatherproof Lighting globes

Clear glass



Cat. No.	Std. Ctn.	Std. Wt. (lbs.)
E960GLB Clear glass	6	6.6

Clear Polycarbonate

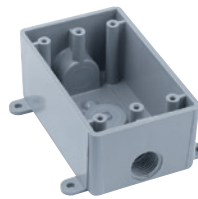


Cat. No.	Std. Ctn.	Std. Wt. (lbs.)
E960PGL (Clear plastic)	6	6.6

## Weatherproof T Boxes

**Features and benefits:**

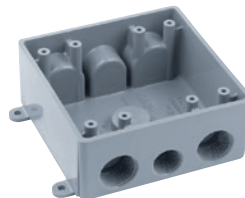
- Red Dot® Weatherproof T boxes are for use with non-metallic wiring systems only
- Can be used with Red Dot® lampholder



Single-gang T box

- With three 1/2" threaded holes
- Mounting feet included

Cat. No.	Color	Size (in.)	Std. ctn.	Std. Wt. (lbs.)
E381D-car	Gray	1/2	10	2.3
E381DW-CAR	White	1/2	6	3.6



Clear glass

- With three 1/2" and four 3/4" threaded holes
- Mounting feet included

Cat. No.	Color	Size (in.)	Std. ctn.	Std. Wt. (lbs.)
E382DE	Gray	1/2	6	3.6
E382DEW	White	1/2	6	3.6



Clear glass

- With five 1/2" threaded holes
- Mounting feet included

Cat. No.	Color	Size (in.)	Std. ctn.	Std. Wt. (lbs.)
E365D-CAR	Gray	1/2	10	1.2
E365D-CAR	White	1/2	10	1.2