

Conduit Bodies

Conduit Bodies, Covers and Gaskets — A Series (continued)

LR Style

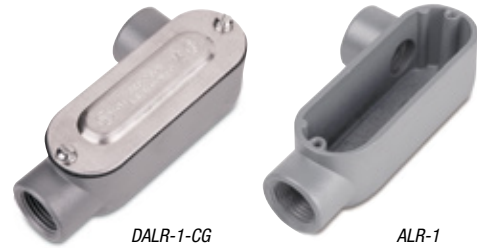
- Die-cast copper-free aluminum construction
- Provide access for pulling, splicing and maintenance
- For rigid conduit/IMC applications
- Fittings, covers and gaskets are interchangeable with those produced by other leading manufacturers
- Finish: Powder-coated urethane



CAT. NO.	TRADE SIZE (IN.)	A (IN.)	B (IN.)	STD. CTN.	CAT. NO.	HUB SIZE (IN.)	STD. CTN.
ALR-1	1/2	3 3/8	2	50	D-PAK® *		
ALR-2	3/4	4 3/8	2 15/16	50	DALR-1-CG	1/2	12
ALR-3	1	5 3/8	2 1/2	25	DALR-2-CG	3/4	15
ALR-4	1 1/4	7 1/4	3 3/8	10	DALR-3-CG	1	5
ALR-5	1 1/2	7 3/4	3 3/8	10	DALR-4-CG	1 1/4	4
ALR-6	2	9 1/2	3 15/16	5	DALR-5-CG	1 1/2	4
ALR-7*	2 1/2	12 1/4	5 1/2	1	DALR-6-CG	2	2
ALR-8*	3	12 1/4	5 1/2	1	DALR-7-CG	2 1/2	2
ALR-9*	3 1/2	15	6 1/2	1	DALR-8-CG	3	2
ALR-10*	4	15	6 1/2	1	DALR-9-CG	3 1/2	2
					DALR-10-CG	4	2

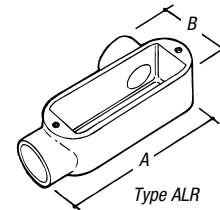
* Threaded and shipped with cover. Price includes cost of cover and body.
UL File No. E-28688.

UL Listed.



DALR-1-CG

ALR-1



Type ALR

T Style



CAT. NO.	TRADE SIZE (IN.)	A (IN.)	B (IN.)	STD. CTN.	CAT. NO.	HUB SIZE (IN.)	STD. CTN.
AT-1	1/2	3 3/8	2 1/16	50	D-PAK® *		
AT-2	3/4	4 3/8	2 11/32	50	DAT-1-CG	1/2	12
AT-3	1	5 3/8	2 3/8	25	DAT-2-CG	3/4	14
AT-4	1 1/4	7 1/4	3 17/32	10	DAT-3-CG	1	5
AT-5	1 1/2	7 3/4	3 17/32	10	DAT-4-CG	1 1/4	5
AT-6	2	9 1/2	4	5	DAT-5-CG	1 1/2	5
AT-7*	2 1/2	12 1/4	5 25/32	1	DAT-6-CG	2	2
AT-8*	3	12 1/4	5 25/32	1	DAT-7-CG	2 1/2	2
AT-9*	3 1/2	15	6 13/16	1	DAT-8-CG	3	2
AT-10*	4	15	6 13/16	1	DAT-9-CG	3 1/2	2
					DAT-10-CG	4	2

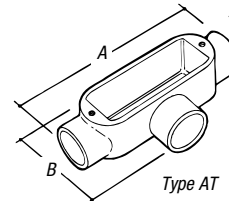
* Threaded and shipped with cover. Price includes cost of cover and body.
UL File No. E-28688.

UL Listed.



DAT-1-CG

AT-1



Type AT

LRL Style



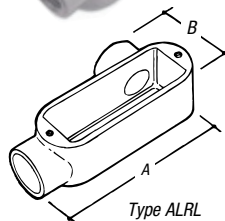
CAT. NO.	TRADE SIZE (IN.)	A (IN.)	B (IN.)	STD. CTN.
ALRL-1	1/2	3 3/8	2	50
ALRL-2	3/4	4 3/8	2 15/16	50
ALRL-3	1	5 3/8	2 1/2	25
ALRL-4	1 1/4	7 1/4	3 3/8	10
ALRL-5	1 1/2	7 3/4	3 3/8	10
ALRL-6	2	9 1/2	3 15/16	5

* Threaded and shipped with cover. Price includes cost of cover and body.
UL File No. E-28688.

UL Listed.



ALRL-1



Type ALRL

Dead End

- Retained stainless steel cover screws
- Cubic capacity UL and CSA clearly shown
- Smooth throats for easy wire pulling
- Ultra-high pressure die-cast copper-free aluminum
- UL Listed, CSA Certified



CAT. NO.	HUB SIZE (IN.)
AE-1	1/2
AE-2	3/4