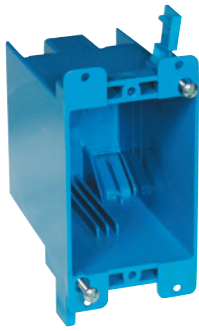


One-gang

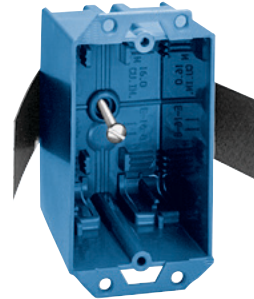
Old work



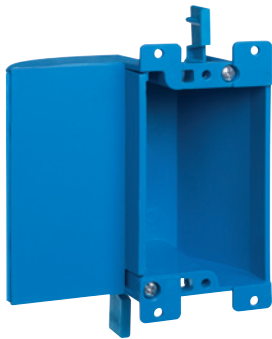
B120R



B114R-UPC



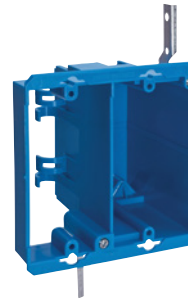
E-16-8



B117RSW



B108R-UPC



E18-4

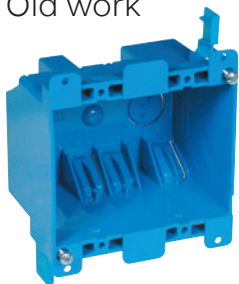


Cat. No.	Size (cu. in.)	Mounting means	Description	Dimensions (in.)	Std. Ctn.
B120R •	20.0	Mounting ears and swing bracket	—	4 ¹ / ₈ L x 2 ⁵ / ₁₆ W x 3 ⁵ / ₈ D	50
B114R-UPC •	14.0	Mounting ears and swing clamps	—	4 ¹ / ₈ L x 2 ¹ / ₄ W x 2 ³ / ₄ D	50
E-16-8	16.0	Thermoplastic molded ears #4 snap-in	Molded fast clamps	3 ¹ / ₂ L x 2 ¹ / ₄ W x 2 ¹¹ / ₁₆ D	50
B117RSW •	17.0	Mounting ears and swing clamps	Access panel	3.64 L x 4.07 W x 2.00 D (2.20 opening)	30
B108R-UPC •	8.0	Mounting ears	—	3 ⁵ / ₈ L x 2 ³ / ₈ W x 1 ¹ / ₄ D	25
E-18-4	18.0	Thermoplastic molded ears #4 swing brackets	Integral molded V-clamp	3 ²⁵ / ₃₂ L x 2 ⁷ / ₃₂ W x 2 ¹ / ₄ D	100

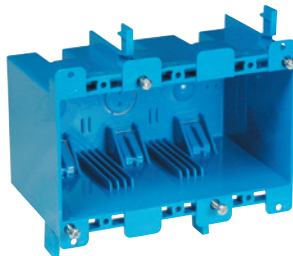
• Not UL Classified for Fire Resistance.

Two to four-gang

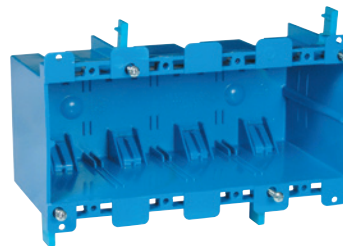
Old work



B225R-UPC



B355R



B468R

Two, three and four-gang 25.0 - 68.0 cu. in.



Cat. No.	Size (cu. in.)	Mounting means	Description	Dimensions (in.)	Std. Ctn.
B225R-UPC •	25.0	Mounting ears and two swing clamps	—	3 ¹ / ₂ L x 3 ³ / ₈ W x 2 ³ / ₄ D	30
B355R •	55.0	Mounting ears and two swing clamps	—	5.72 L x 2.79 W x 3.69 D	6
B468R •	68.0	Mounting ears and two swing clamps	—	7.57 L x 2.89 W x 3.56 D	6

• Not UL Classified for Fire Resistance.