

1SNK516062R0000 ✓ ACTIVE

TE Internal #: 1SNK516062R0000

Screw Clamp Terminal Block, Feed-Through, Signal, DIN Rail, -55 – 110 °C [-67 – 230 °F]

[View on TE.com >](#)



Connectors > Terminal Blocks & Strips > Modular Terminal Blocks



Modular Terminal Block Product Type: **Screw Clamp Terminal Block**

Block Function: **Feed-Through**

Circuit Application: **Signal**

Connector Mounting Type: **DIN Rail**

Operating Temperature Range: **-55 – 110 °C [-67 – 230 °F]**

Features

Product Type Features

Modular Terminal Block Product Type	Screw Clamp Terminal Block
-------------------------------------	----------------------------

Configuration Features

Block Function	Feed-Through
----------------	--------------

Body Features

Product Weight	30 g[1.05 oz]
----------------	---------------

Mechanical Attachment

Connector Mounting Type	DIN Rail
-------------------------	----------

Dimensions

Product Width	16 mm[.629 in]
---------------	----------------

Product Depth	60.3 mm[2.37 in]
---------------	------------------

Product Length	60.3 mm[2.37 in]
----------------	------------------

Product Height	55.8 mm[2.2 in]
----------------	-----------------

Usage Conditions

Operating Temperature Range	-55 – 110 °C[-67 – 230 °F]
-----------------------------	----------------------------

Operation/Application

Circuit Application	Signal
---------------------	--------

Industry Standards

UL Flammability Rating	UL 94V-0
------------------------	----------



Product Compliance

[For compliance documentation, visit the product page on TE.com>](#)

EU RoHS Directive 2011/65/EU	Compliant
EU ELV Directive 2000/53/EC	Compliant
China RoHS 2 Directive MIIT Order No 32, 2016	No Restricted Materials Above Threshold
EU REACH Regulation (EC) No. 1907/2006	Current ECHA Candidate List: JAN 2025 (247) Candidate List Declared Against: JUNE 2024 (241) Does not contain REACH SVHC
Halogen Content	Low Halogen - Br, Cl, F, I < 900 ppm per homogenous material. Also BFR/CFR/PVC Free
Solder Process Capability	Not reviewed for solder process capability

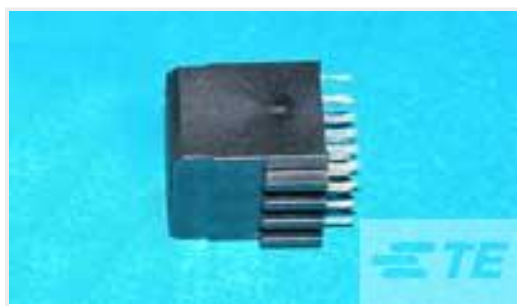
Product Compliance Disclaimer

This information is provided based on reasonable inquiry of our suppliers and represents our current actual knowledge based on the information they provided. This information is subject to change. The part numbers that TE has identified as EU RoHS compliant have a maximum concentration of 0.1% by weight in homogenous materials for lead, hexavalent chromium, mercury, PBB, PBDE, DBP, BBP, DEHP, DIBP, and 0.01% for cadmium, or qualify for an exemption to these limits as defined in the Annexes of Directive 2011/65/EU (RoHS2). Finished electrical and electronic equipment products will be CE marked as required by Directive 2011/65/EU. Components may not be CE marked. Additionally, the part numbers that TE has identified as EU ELV compliant have a maximum concentration of 0.1% by weight in homogenous materials for lead, hexavalent chromium, and mercury, and 0.01% for cadmium, or qualify for an exemption to these limits as defined in the Annexes of Directive 2000/53/EC (ELV). Regarding the REACH Regulation, the information TE provides on SVHC in articles for this part number is based on the latest European Chemicals Agency (ECHA) 'Guidance on requirements for substances in articles' posted at this URL: <https://echa.europa.eu/guidance-documents/guidance-on-reach>

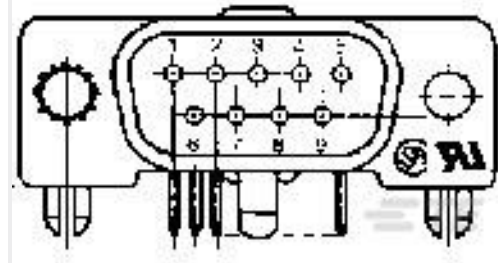
Compatible Parts



Customers Also Bought



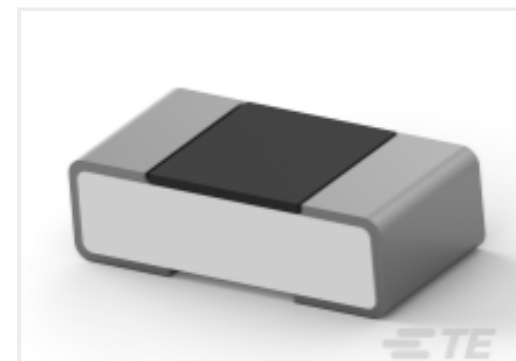
TE Part #1410270-2
MULTIGIG RT PWR .8" VRT RCP 4P
PBFR



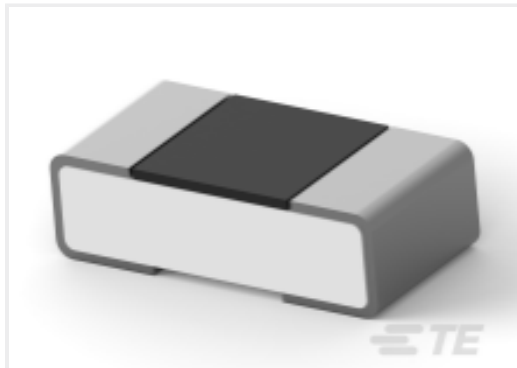
TE Part #5745001-3
HDJ PLUG 9P RA 590



TE Part #1SNK516020R0000
ZS35-BL



TE Part #1-2176364-9
RQ 0402 7K15 0.1% 10PPM 5K RL



TE Part #6-2176363-5
RQ 0402 2K0 0.1% 10PPM 5K RL



TE Part #1SNK900001R0000
BAM4



TE Part #1SNK516150R0000
ZS35-PE



TE Part #1SNK516061R0000
ZS35-RD



TE Part #1SNK516063R0000
ZS50-RD



TE Part #1SNK516021R0000
ZS50-BL

Documents

Product Drawings

[ZS35-BK](#)

English

CAD Files

[3D PDF](#)

3D

Customer View Model

[ENG_CVM_CVM_1SNK516062R0000_A.2d_dxf.zip](#)

English

Customer View Model

[ENG_CVM_CVM_1SNK516062R0000_A.3d_igs.zip](#)

English

Customer View Model

[ENG_CVM_CVM_1SNK516062R0000_A.3d_stp.zip](#)

English

By downloading the CAD file I accept and agree to the [Terms and Conditions](#) of use.

Agency Approvals

1SNK516062R0000

Screw Clamp Terminal Block, Feed-Through, Signal, DIN Rail, -55 – 110 °C [-67 – 230 °
F]



[ZK-ZS_ATEX_1SND225112U1006-C-TE](#)

English