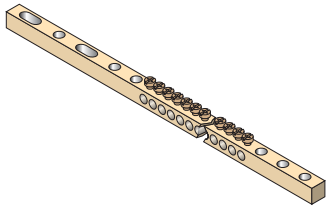
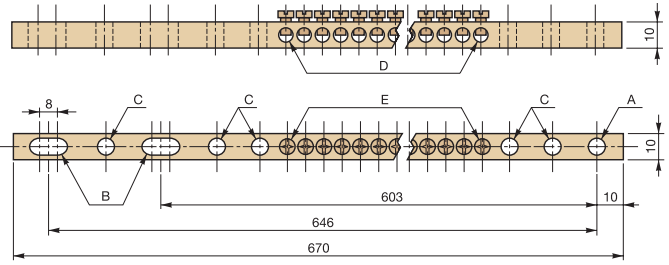


### Busbar 10 x 10 mm .394 x .394" for ground wire



- A : Ø 6,5 mm
- B : 6,5 x 14,5 mm
- C : Ø 6,5 mm
- D : Ø 5,5 mm
- E : M4 slotted Pozidriv cruciform head screw

### BTI

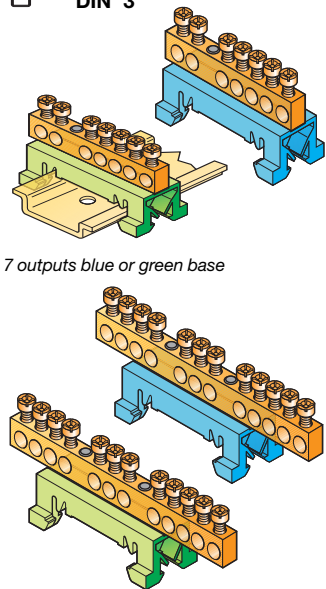


Mounting with screw/nut system - hole type **A** side : Ø 6,5 mm - oblong hole type **B** side : 6,5 x 14,5 mm  
 Connections :  
 5 holes type **C** : Ø 6,5 mm for solid/stranded cables screw/nuts connection system  
 74 holes type **D** : Ø 5,5 mm for solid/stranded cables screw/nuts connection system  
 secured by 74 screws type **E** : slotted Pozidriv cruciform head

Type	P/N	Characteristics	IEC	UL	CSA
BTI	0179 839.04	Rated current Wire size - Screw - Screw / nut Recommended torque Screw 3 mounting holes : - 2 oblong holes - 1 hole	125 A  74 x 0,75 to 10 mm <sup>2</sup> 5 x Ø 6,5 mm 0,7 Nm slotted Pozidriv cruciform		

### Bars with base for ground wire

DIN 3



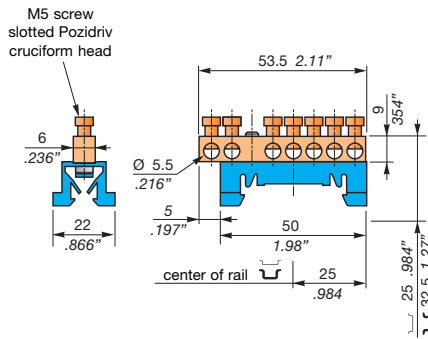
7 outputs blue or green base

12 outputs blue or green base

- PR30 35 x 7,5 x 1 0173 220.05
  - PR4 35 x 15 x 2,3 0168 500.12
  - PR5 35 x 15 x 1,5 0101 598.26
- Other rails : see Accessories section

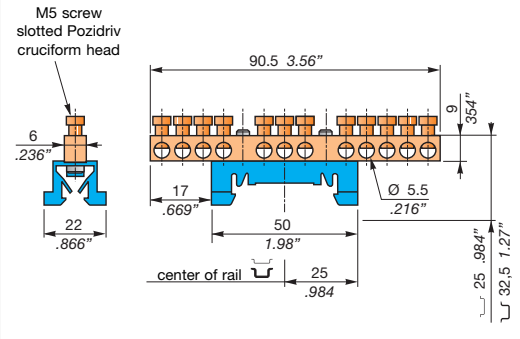
### DBTI

#### 7 outputs



Mounting on DIN 3 rail

#### 12 outputs



Mounting on DIN 3 rail

Type	P/N	Type	P/N	IEC	UL	CSA
7 outputs blue base DBTI	RAU0356 100.15	12 outputs blue base DBTI	RAU0356 102.03			
7 outputs green base DBTI	RAU0356 101.02	12 outputs green base DBTI	RAU0356 103.04			
Characteristics		Characteristics				
Connection - Screw clamp - Max. wire size		Connection - Screw clamp - Max. wire size		7 outputs 10 mm <sup>2</sup>	12 outputs 10 mm <sup>2</sup>	
Torque on screw Screw	1.5 Nm	Torque on screw Screw	1.5 Nm	13.3 lb.in	13.3 lb.in	13.3 lb.in
	M5		M5	M5	M5	M5