

IEC Appliance Inlet C14 or C18 with Fuseholder 1- or 2-pole

Plug removal necessary for fuse replacement



V-Lock



Description

- Panel Mount:
Screw-on mounting from front or rear-side
- 2 Functions:
Appliance Inlet protection class I or II, fuse-links 5x20 mm 1- or 2-pole
- V-Lock notch standard
- Meets the requirements of IEC 60335-1 for appliances in unattended use. This includes the enhanced requirements of glow wire tests acc. to IEC 60695-2-12 and -13.
- Solder terminals 3.8 x 0.8 mm or quick connect terminals 6.3 x 0.8 mm

Approvals

- VDE Certificate Number: 40006816
- UL File Number: E93617

Characteristics

- All single elements are already wired
- With slotted screw type fuseholder
Fuseholder meets requirements of medical standard IEC/EN 60601-1
The fuseholder can only be opened with the aid of a tool
The fuseholder is accessible from the equipment front
- Suitable for use in equipment according to IEC/UL 60950

Other versions on request

- Variant with notch for V-Lock mating Cordsets
- Fuse carrier with IP65 protection degree

Weblinks

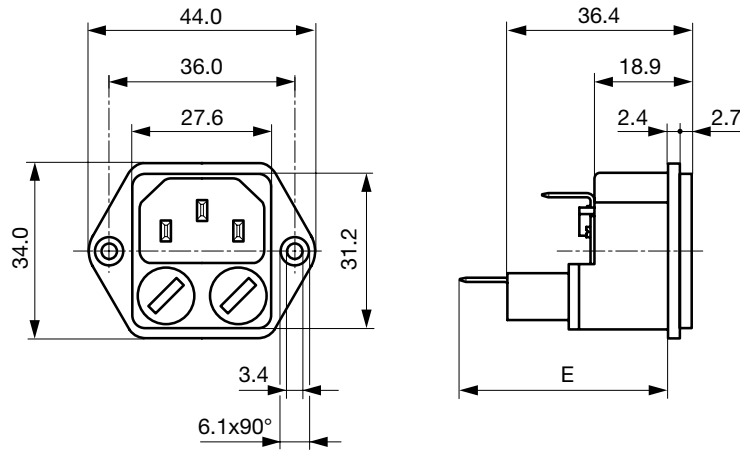
[pdf-datasheet](#), [html-datasheet](#), [General Product Information](#), [Approvals](#), [CE declaration of conformity](#), [RoHS](#), [CHINA-RoHS](#), [REACH](#), [Mating Connectors](#), [e-Shop](#), [SCHURTER-Stock-Check](#), [Distributor-Stock-Check](#), [CAD-Drawings](#), [Accessories](#), [Detailed request for product](#)

Newly available variants corresponding to V-Lock mating cordset. The connector is equipped with a notch intended for use with the latching cordset. The cord latching system prevents against accidental removal of the cordset.

Technical Data

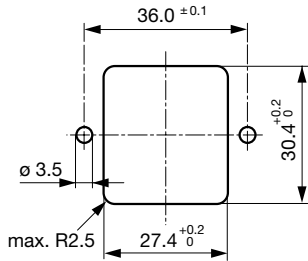
| | | | |
|---------------------------|---|-----------------------------------|---|
| Ratings IEC | 10A / 250VAC; 50Hz | Appliance Inlet | C14 or C18 acc. to IEC 60320, UL 498, CSA C22.2 no. 42 (for cold conditions) pin-temperature 70 °C, 10A, Protection Class I or II |
| Ratings UL/CSA | 10A / 250VAC; 60Hz | Fuseholder | 1 or 2 pole, Shocksafe category PC2 acc. to IEC 60127-6, for fuse-links 5 x 20mm |
| Dielectric Strength | > 2kVAC between L-N > 3kVAC between L/N-PE (1 min/50Hz) | Rated Power Acceptance @ Ta 23 °C | 5 x 20: 1.6W (1 pole)/ 1.6W (2-pole) per pole |
| Allowable Operation Temp. | -25 °C to 70 °C | Power Acceptance @ Ta > 23 °C | Admissible power acceptance at higher ambient temperature see derating curves |
| Degree of Protection | from front side IP 40 acc. to IEC 60529 | | |
| Protection Class | Suitable for appliances with protection class I or II acc. to IEC 61140 | | |
| Terminal | Solder terminals or quick connect terminals | | |
| Panel Thickness s | Screw: max 6 mm Mounting screw torque max 0.5Nm | | |
| Material: Housing | Thermoplastic, black, UL 94V-0 | | |

Dimensions

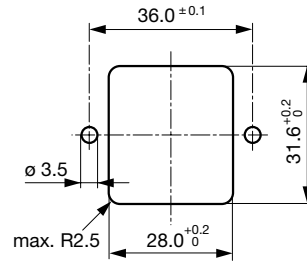


- E: solder terminals = 38 mm
- E: quick-connect terminals 6.3x0.8 = 41 mm
- E: quick-connect terminals 4.8x0.8 = 39.5 mm

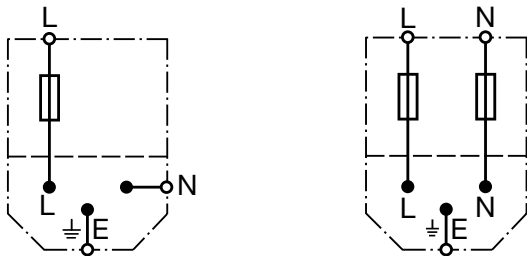
Panel cut-out for front mounting



Panel cut-out for rear mounting

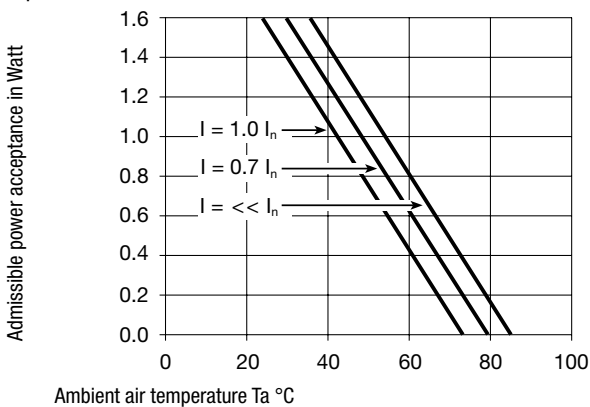


Diagrams

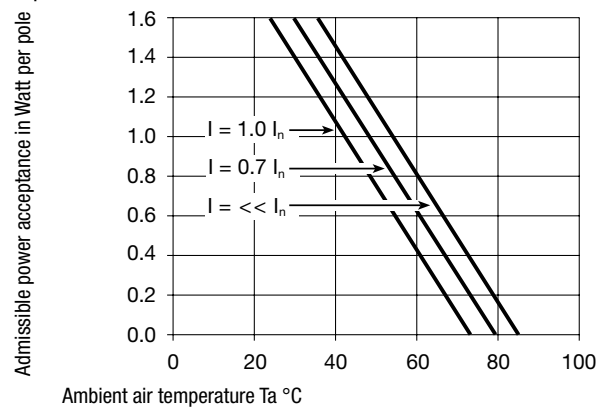


Derating Curves

1-pole



2-pole



All Variants

| Protection Class | Terminal | Fuseholder | Order Number |
|------------------|--------------------------------------|------------|--------------|
| I | Quick connect terminals 6.3 x 0.8 mm | 1-pole | 4707.1000 |
| I | Solder terminals | 1-pole | 4707.1300 |
| I | Quick connect terminals 6.3 x 0.8 mm | 2-pole | 4707.2000 |
| I | Quick connect terminals 6.3 x 0.8 mm | 2-pole | 4707.2000.21 |
| I | Solder terminals | 2-pole | 4707.2300 |
| II | Quick connect terminals 4.8 x 0.8 mm | 2-pole | 4707.4100 |

Most Popular.

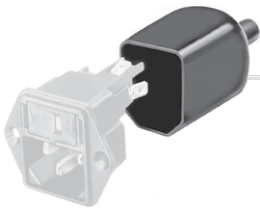
Availability for all products can be searched real-time: <http://www.schurter.com/en/Stock-Check/Stock-Check-SCHURTER>

Suffix ".21" corresponds to the version with V-Lock mating cordset. The connector is equipped with a notch intended for use with the latching cordset. The cord latching system prevents against accidental removal of the cordset.

Packaging unit 100 Pcs

Accessories

Description



Assorted Covers
Rear Cover



Cord retaining kits
Cord retaining strain relief

Mating Outlets/Connectors

Category / Description



Appliance Outlet Overview complete

IEC Appliance Outlet F, Snap-in Mounting, Front Side, Solder or Quick-connect Terminal 4788

IEC Appliance Outlet F or H, Screw-on Mounting, Front Side, Solder, PCB or Quick-connect Terminal 5091

[Appliance Outlet further types to 4707](#)



Connector Overview complete

IEC Connector C15A, Rewireable, Straight 0102

IEC Connector C15A, Rewireable, Straight 0102-G

IEC Connector C15A, Rewireable, Angled 0112

IEC Connector C13, Rewireable, Angled 4012

IEC Connector C13, Rewireable, Straight 4022

[Connector further types to 4707](#)

...

Mating Outlets/Connectors shuttered



[Power Cord Overview complete](#)

[Overview Power Supply Cord with IEC Connector C13, V-Lock, straight](#)

[VAC13KS](#)

[Power Cord further types to 4707](#)