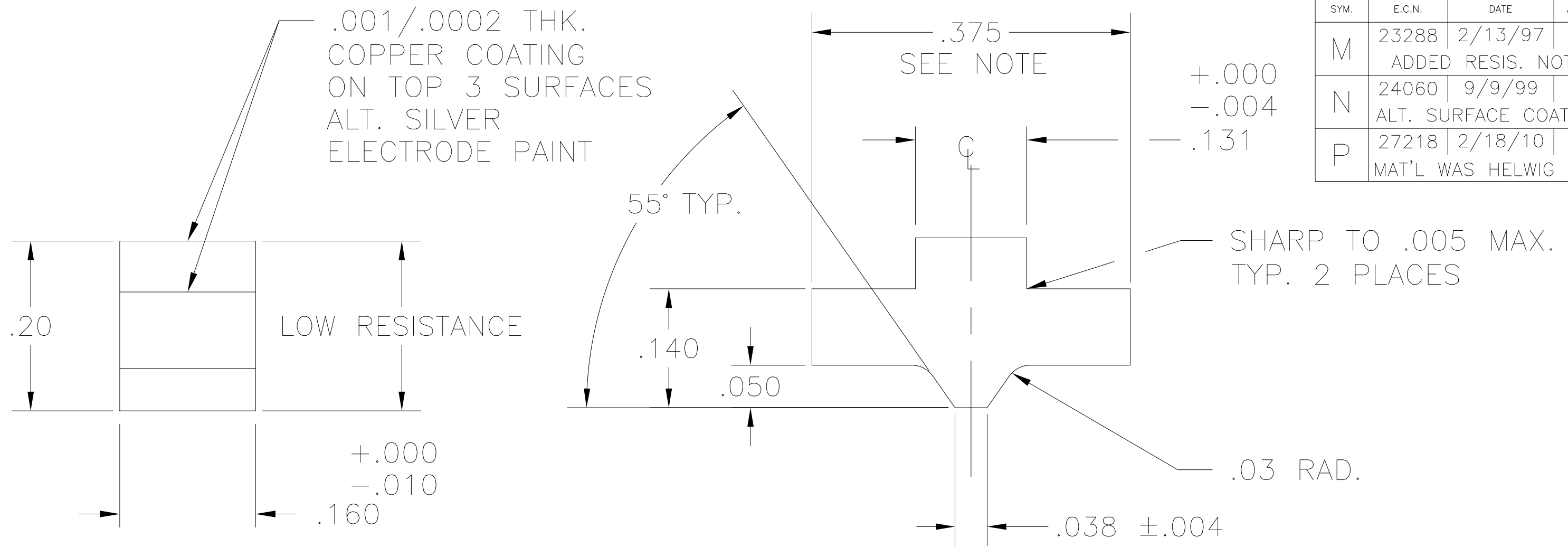


DWG. SIZE <b>B</b>	DWG. NO. 146-0121		
REVISIONS			
SYM.	E.C.N.	DATE	APVD.
M	23288	2/13/97	ADDED RESIS. NOTE
N	24060	9/9/99	ALT. SURFACE COATING
P	27218	2/18/10	MAT'L WAS HELWIG H21



- NOTES:
1. GRAIN ORIENTATION:  
WIDTH TO BE MADE FROM THICKNESS OF BRUSH STOCK MAT'L (HIGH RESISTANCE).
  2. PART SCALE: 8=1
  3. ALT. SOURCE:  
HELWIG CARBON: H22 MATERIAL WITH SILVER BEARING THERMOPLASTIC ACRYLIC POLYMER SILVER PAINT

UNLESS OTHERWISE SPECIFIED, TOLERANCE IS ±				UNITS IN [mm]	TITLE:  <b>BRUSH</b>				 A Components Corporation of America Company 301 Gaddis Boulevard Dayton, Ohio 45403 USA	
DECIMALS .XX .010 .XXX .005	HOLES .005	ANGLES 1°	DRAFT 1-1/2°							
MATERIAL: SPEER GRADE E-22 OR PURE CARBON P-04				ALL DIMENSIONS APPLY AFTER PLATING	DRAWN BY S.A. SMITH	DATE 2/25/93	FIRST USED ON CAT. 01	DO NOT SCALE DWG.	DWG. SIZE <b>B</b>	DWG. NO. 146-0121
The information and design disclosed herein was originated by and is the property of STACO ENERGY PRODUCTS CO., which reserves all patent, proprietary, design, manufacturing, reproduction, use and sale rights thereto, and to any article disclosed therein except to the extent rights are expressly granted to others. The foregoing does not apply to vendor proprietary parts.					CHECKER	DATE	WEIGHT APPROX.	CAGE CODE 83008	SHEET 1 OF 1	
					ENGINEER	DATE	SCALE 1=1			