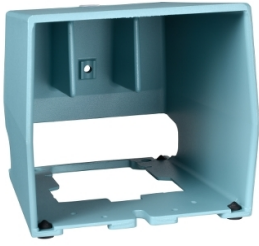


Product data sheet

Specifications



Protective cover, Harmony XPE,
single cover, for foot switch, metal,
blue

XPEZ901

Main

Range of product	Harmony XPE
Accessory / separate part designation	Single protective cover
Accessory / separate part type	Protective cover
Product or component type	Protecting cover
Accessory / separate part category	Separate parts Replacement parts
Product compatibility	XPEM
Accessory / separate part destination	Metal foot switch

Complementary

Net weight	2.6 lb(US) (1.2 kg)
------------	---------------------

Packing Units

Unit Type of Package 1	PCE
Number of Units in Package 1	1
Package 1 Height	6.89 in (17.500 cm)
Package 1 Width	7.87 in (20.000 cm)
Package 1 Length	8.27 in (21.000 cm)
Package 1 Weight	2.601 lb(US) (1.180 kg)
Unit Type of Package 2	P06
Number of Units in Package 2	30
Package 2 Height	29.53 in (75.000 cm)
Package 2 Width	23.62 in (60.000 cm)
Package 2 Length	31.50 in (80.000 cm)
Package 2 Weight	106.704 lb(US) (48.400 kg)

Contractual warranty

Warranty	18 months
----------	-----------


Environmental Data

Schneider Electric aims to achieve Net Zero status by 2050 through supply chain partnerships, lower impact materials, and circularity via our ongoing “Use Better, Use Longer, Use Again” campaign to extend product lifetimes and recyclability.

[Environmental Data explained >](#)

[How we assess product sustainability >](#)

Use Better

 Materials and Substances	
Packaging made with recycled cardboard	Yes
Packaging without single use plastic	Yes
EU RoHS Directive	Pro-active compliance (Product out of EU RoHS legal scope)
SCIP Number	451cade4-6b49-461c-ac92-e842df435b8f
REACH Regulation	REACH Declaration

Use Again


 Repack and remanufacture	
Take-back	No

Image of product / Alternate images

Alternative



