

ACCELERATE®

(0.635 mm) .025"

ARF6-RA SERIES

RUGGED RIGHT-ANGLE SLIM SOCKET

ARF6-08-L-RA-TR



ARF6-16-L-RA-TR



SPECIFICATIONS

For complete specifications see www.samtec.com?ARF6-RA

Insulator Material:

LCP, Black

Contact Material:

Copper Alloy

Shield Material:

Phosphor Bronze

Plating:

Au or Sn over

50 μm (1.27 μm) Ni

Operating Temp Range:

-40 °C to +125 °C

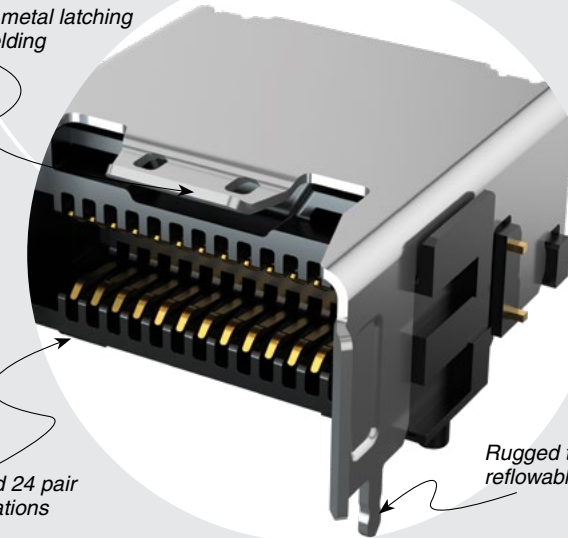
Mates with:
ARC6

PAM 4	NRZ
56 Gbps	28 Gbps

Rugged metal latching and shielding

8, 16 and 24 pair configurations

Rugged through-hole reflowable weld tabs

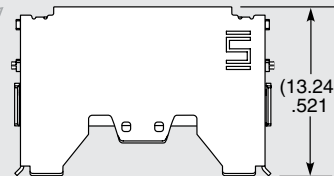


ARF6	NO. OF PAIRS	PLATING	RA	"X"R
	-08 = 8 Pairs	-L = 10 μm (0.25 μm) Gold on contact area, Matte Tin on tail		-TR = Tape & Reel
	-16 = 16 Pairs	-S = 30 μm (0.76 μm) Gold on contact area, Matte Tin on tail		-FR = Full Reel Tape & Reel (must order max. quantity per reel; contact Samtec for quantity breaks)
	-24 = 24 Pairs			

IN DEVELOPMENT

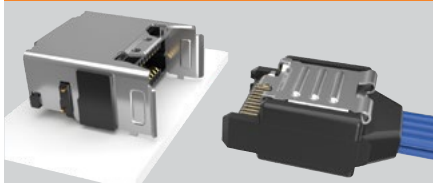
- 24 pairs

-24 PAIRS
PRELIMINARY



NO. OF PAIRS	A	B	C	N	N-1
-08	(12.46) .491	(7.62) .300	(11.30) .445	26	25
-16	(20.08) .791	(15.24) .600	(18.92) .745	50	49
-24	(27.70) 1.091	(22.86) .900	(26.54) 1.045	74	73

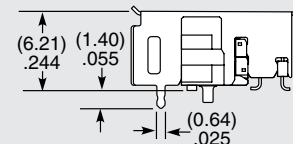
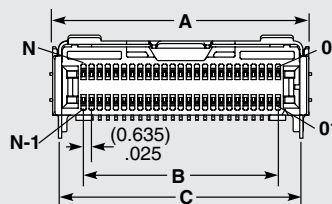
APPLICATION



Notes:

Tape & Reel packaging is standard.

Some sizes, styles and options are non-standard, non-returnable.



ARF6-16-X-RA SHOWN

Due to technical progress, all designs, specifications and components are subject to change without notice.

WWW.SAMTEC.COM

All parts within this catalog are built to Samtec's specifications.

Customer specific requirements must be approved by Samtec and identified in a Samtec customer-specific drawing to apply.