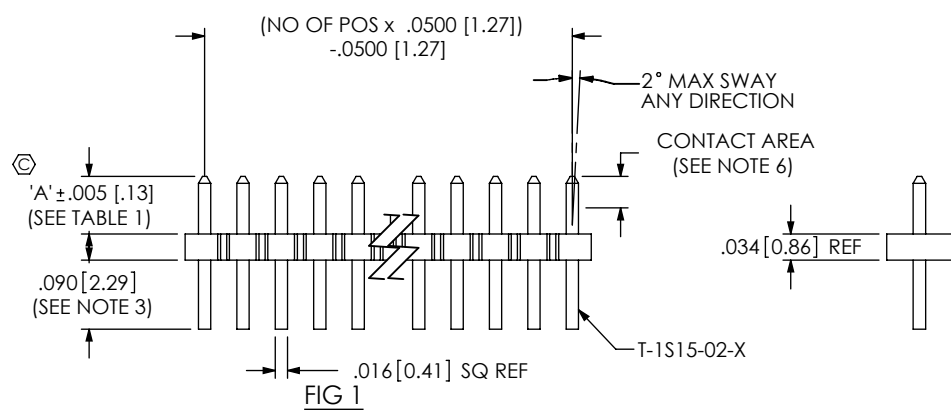
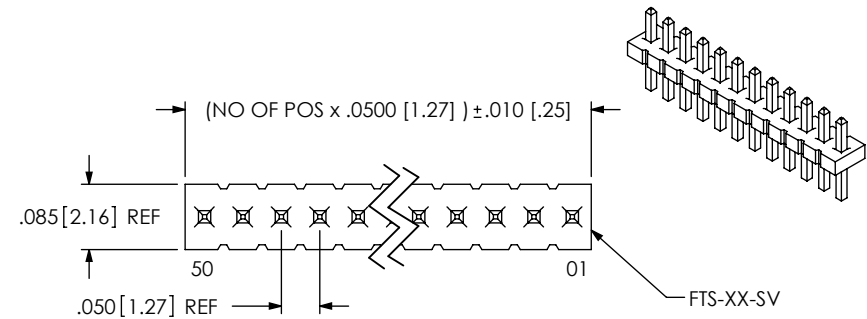


DO NOT SCALE FROM THIS PRINT



FTS-1XX-XX-X-SX □

No OF POSITIONS  
-02 THRU -50

TAIL OPTION  
-S: SINGLE ROW THROUGH HOLE (SEE FIG 1)  
-SV: SINGLE ROW VERTICAL SURFACE MOUNT (SEE FIG 2)

LEAD STYLE  
-01: .120 [3.05] POST  
-02: .075 [1.91] POST  
-03: .065 [1.65] POST

PLATING SPECIFICATION  
-L: 10μ" LIGHT SELECTIVE GOLD IN CONTACT AREA, MATTE TIN ON TAIL  
-F: 3μ" FLASH SELECTIVE GOLD IN CONTACT AREA, MATTE TIN ON TAIL  
-H: 30μ" HEAVY GOLD IN CONTACT AREA, 3μ" GOLD ON TAIL  
-S: 30μ" SELECTIVE GOLD IN CONTACT AREA, MATTE TIN ON TAIL  
-G: 10μ" GOLD IN CONTACT AREA, 3μ" GOLD ON TAIL

LEAD STYLE	"A"
-01	.120[3.05]
-02	.075[1.91]
-03	.065[1.65]

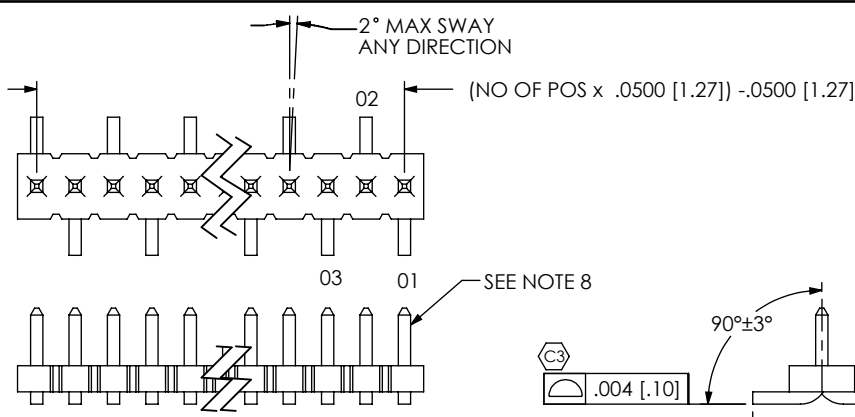


FIG 2 (DIFFERENT AS SHOWN, OTHERWISE SAME AS FIG 1)

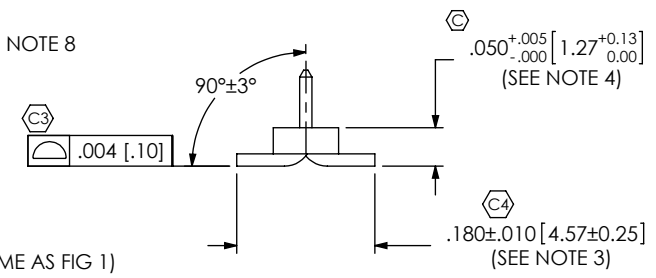
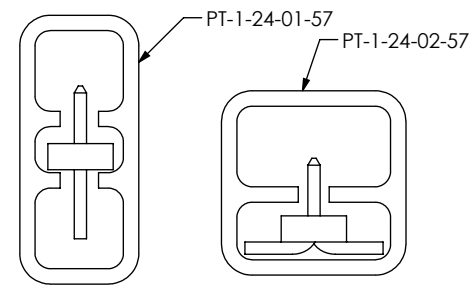


FIG 3 (SEE NOTE 5)

TAIL OPTION	TUBE	PLUG
-S	PT-1-24-01-57	TP-30
-SV	PT-1-24-02-57	TP-12



NOTES:

1. Ⓢ REPRESENTS A CRITICAL DIMENSION.
2. PARTS MAY BE CUT TO POSITION.
3. SHEAR TAILS TO DIMENSION SHOWN.
4. MEASURED AT BEND RADIUS, NOT AT END OF PIN.
5. TUBE ONLY -05 THROUGH -50 POSITIONS; LAYER PACKAGE -02 THROUGH -04 POSITIONS
6. GOLD PLATING TO BE ON POST, TIN PLATING TO BE ON TAIL.
7. MAXIMUM CUT FLASH: .015 [.38]
8. USE T-1S26-03-X FOR MACHINE FILL AND T-1S15-03-X FOR HAND FILL.
9. MINIMUM PIN RETENTION: .5 LB
10. FILL BODY SO THAT THE LEAD IN ON THE CORE IS ON THE TAIL SIDE.

UNLESS OTHERWISE SPECIFIED, DIMENSIONS ARE IN INCHES. TOLERANCES ARE:  
DECIMALS ANGLES  
.XX: ±.01 [.3] 2°  
.XXX: ±.005 [.13]  
.XXXX: ±.0020 [.051]

PROPRIETARY NOTE  
THIS DOCUMENT CONTAINS INFORMATION CONFIDENTIAL AND PROPRIETARY TO SAMTEC, INC. AND SHALL NOT BE REPRODUCED OR TRANSFERRED TO OTHER DOCUMENTS OR DISCLOSED TO OTHERS OR USED FOR ANY PURPOSE OTHER THAN THAT WHICH IT WAS OBTAINED WITHOUT THE EXPRESSED WRITTEN CONSENT OF SAMTEC, INC.



520 PARK EAST BLVD., NEW ALBANY, IN 47150  
PHONE: 812-944-6733 FAX: 812-948-5047  
e-Mail: info@SAMTEC.com code 55322

MATERIAL: DO NOT SCALE DRAWING SHEET SCALE: 5:1  
INSULATOR: LCP, UL 94 VO  
COLOR: BLACK  
TERMINAL: PHOS BRONZE

DESCRIPTION:  
.050 C.L. LOW PROFILE TERMINAL STRIP ASSEMBLY

DWG. NO. FTS-1XX-XX-X-SX

BY: BRATCHER 6-8-95 SHEET 1 OF 1