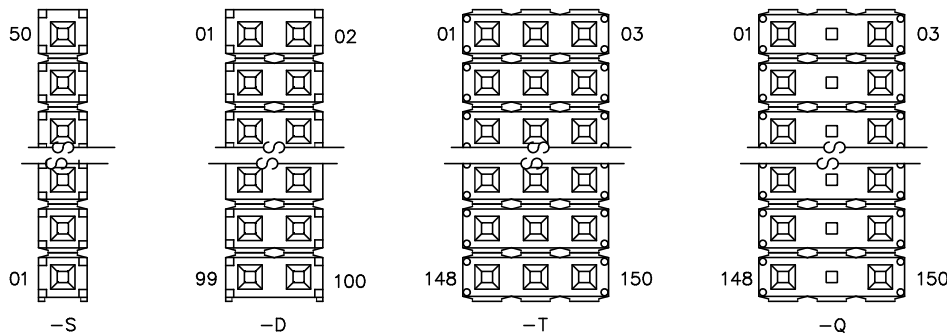
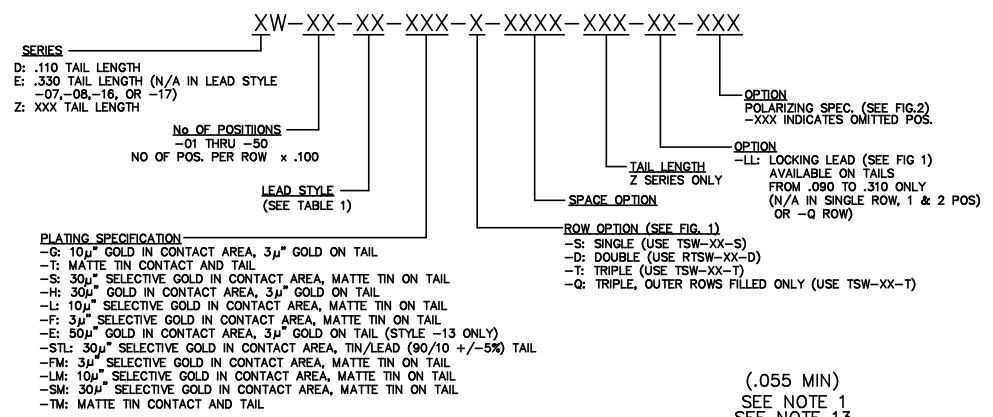
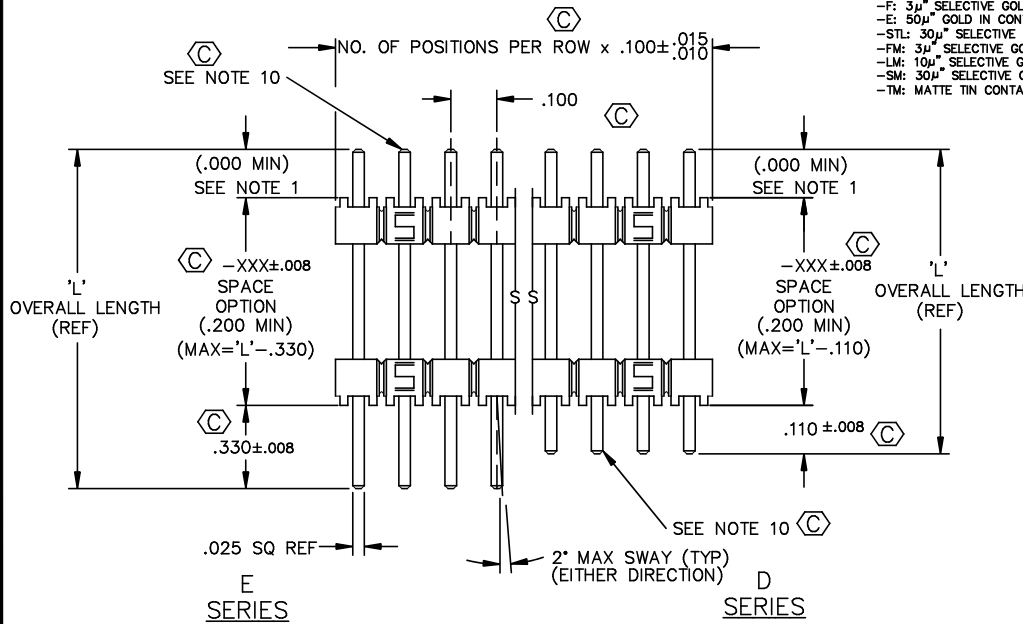


DO NOT SCALE FROM THIS PRINT

LEAD STYLE		TERMINAL	'L' OVERALL LENGTH (REF)
SERIES D&Z	SERIES E		
07	N/A	T-1S6-07-XXX-2	.430
08	N/A	T-1S6-08-XXX-2	.530
09	09	T-1S6-09-XXX-2	.730
10	10	T-1S6-10-XXX-2	.830
11	11	T-1S6-11-XXX-2	.930
12	12	T-1S6-12-XXX-2	1.030
13	13	T-1S6-13-XXX-2	1.230
14	14	T-1S6-14-XXX-2	1.430
15	15	T-1S6-15-XXX-2	.630
16	N/A	T-1S6-16-XXX-2	.445
17	N/A	T-1S6-17-XXX-2	.480
19	19	T-1S6-19-XXX-2	1.330
20	20	T-1S6-20-XXX-2	1.130



- NOTES:
 1. HEIGHT VARIATION BETWEEN ANY TWO PINS AND ROW SHALL BE .010 MAX.
 DELETED 2. -S PLATING: PLATED AREA WILL BE ON THE LONGER TAIL
 DELETED 3. -G PLATING: HEAVY GOLD ON LONGER TAIL
 DELETED 4. -L PLATING: GOLD ON LONGER TAIL
 DELETED 5. -H PLATING: HEAVY GOLD ON LONGER TAIL
 DELETED 6. -F PLATING: FLASH SELECTIVE GOLD ON LONGER TAIL
 DELETED 7. -P PLATING: GOLD FLASHED PALLADIUM NICKEL ON LONGER TAIL
 DELETED 8. -E PLATING: EXTRA HEAVY GOLD ON LONGER TAIL
 9. (C) REPRESENTS A CRITICAL DIMENSION.
 10. -F, -S, -L, -P GOLD TO BE ON LONGER TAIL
 -G, -H, -E, HEAVY GOLD TO BE ON LONGER TAIL
 11. CRIMPED TAILS OF .090 TO BE TOLERANCED +.008/-0.000.
 12. TSW-50-D TO BE USED IF RTSW-50-D IS NOT AVAILABLE
 13. .000 MIN IF TAIL LENGTH IS GREATER THAN OR EQUAL TO .055.
 14. TERMINAL PUSHOUT FORCE: 3 LBS. MIN.
 15. MAXIMUM CUT FLASH: .010[.25]
 16. FOR ADDED MECHANICAL STABILITY, SAMTEC RECOMMENDS MECHANICAL BOARD SPACERS EXISPROD\ASSEMBLY100 BE USED IN APPLICATIONS WITH GOLD OR SELECTIVE GOLD PLATED XW-XX-XX-XXX-X-XXXX-XXX-XX-XXX-ASM1 CONNECTORS. CONTACT IPG@SAMTEC.COM FOR MORE INFORMATION.

PROPRIETARY NOTE
 THIS DOCUMENT CONTAINS INFORMATION CONFIDENTIAL AND PROPRIETARY TO SAMTEC INC AND SHALL NOT BE REPRODUCED OR TRANSFERRED TO OTHER DOCUMENTS OR DISCLOSED TO OTHERS OR USED FOR ANY PURPOSE OTHER THAN THAT FOR WHICH IT WAS OBTAINED WITHOUT THE EXPRESSED WRITTEN CONSENT OF SAMTEC INC.

FIGURE 2
 NUMBER POSITIONS WITH .330, .110, OR ZW TAIL DOWN

MATERIAL:
 BODIES:
 PBT, UL 94 VO
 GLASS FILLED POLYESTER
 COLOR: BLACK
 TERMINALS:
 PHOSPHOR BRONZE, ALLOY
 NO. 510, 3/4 HARD,
 TENSILE RANGE 95-105 KSI

samtec
 520 PARK EAST BLVD. NEW ALBANY, INDIANA 47150
 PHONE (812) 944-6733 P.O. BOX 1147
 CODE 55322
 MADE BY: WILLIAMS 8-13-84 XW-XX-XX-XXX-X-XXXX-XXX-XX-XXX
 SHEET 1 OF 2