

Meter Centers

Meter Mounting Devices

General

General Information

Materials:

16 gauge, galvanized steel, G-90

Enclosures:

NEMA 3R

Finish:

Steel - Light gray, baked on powder polyester

Latches:

All swing latches are stainless steel

Block Material:

Glass reinforced polyester

Terminals:

Residential - Tin-plated aluminum extrusions 6061-T6

Commercial - Tin-plated copper and or tin plated aluminum

Accessories:

All hubs, closure plates, and 5th terminals, if included, are factory installed.

Standards:

Products cataloged herein meet or exceed the following standards:

UL 486B, UL 414, NEMA 250,

ANSI C12.7 UL File #30413

Siemens meter mounting devices utilize the high quality Landis & Gyr design known throughout the utility industry for more than 50 years. Siemens meter sockets are built for safety, ease of installation, and long term quality. That is why we use stainless steel hardware, polyester powder coat paint for long lasting protection, and Type G-90 galvanized steel for all of our enclosures. It is also why we use an all-copper current path in our commercial sockets. All of this means that the Siemens' Landis & Gyr brand is recognized throughout the industry as the quality leader.

Features:

- All enclosures feature type G90 galvanized steel with a durable polyester powder coat finish

- Residential single position sockets (types SUAT) feature a quad neutral as a standard feature
- Most commercial sockets include a ground lug & some models are available with line & load lugs installed
- Lever bypass sockets feature the Landis & Gyr type HQ socket which is recognized by utilities as the industry standard for durability & quality
- Siemens features one of the most complete and comprehensive meter socket lines available from any manufacturer

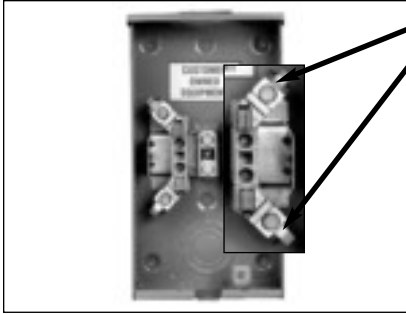


Meter Centers

Meter Socket Bypass Types

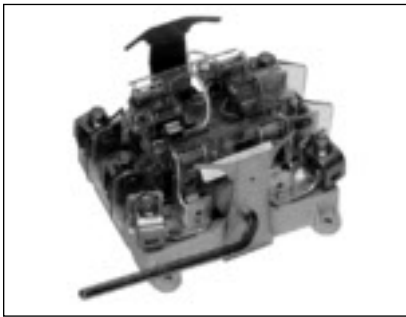
General

There are several different bypass types used in the meter socket industry. The type of bypass used is dependent upon each individual utilities' requirements for that application. The illustrations and photos below will explain some of the basic bypass types seen in section 2 of the Siemens' speedfax. This page is meant for informative purposes only and is not meant to imply or convey the use of any particular bypass or inter-changing of any types of bypass for any application. The local utility should always be contacted to ensure approval of equipment prior to installation. The types of bypasses listed below are for utility use only.



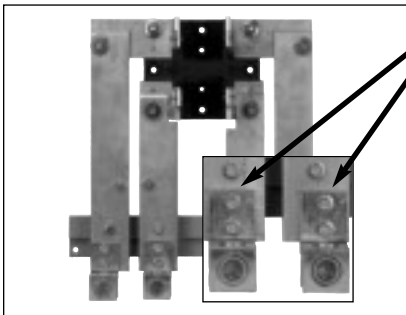
Horn Bypass:

Small tabs or "horns" on the line and load side of the meter socket act as electrical connection points for the utility to install a bypassing means- usually a specially produced wire or "jumper" designed for this specific application.



Lever Bypass:

A lever is used to rotate a plated copper blade between the line and load jaws. The Landis & Gyr lever bypass HQ socket also clamps on the meter when the bypass is dis-engaged. The bypass must be engaged to remove the meter then dis-engaged after the meter is installed. The bypass acts as an alternate path for current flow which helps to mitigate any arcing if the meter is being removed. This also ensures a constant current flow should the meter need to be removed.



Test Block Bypass:

Test Block Bypass sockets (TBB) have the line and load connectors mounted parallel to one another. This provides for a provision to bypass the meter by placing a jumper on the line and load bus. Note that this type of bypass is used primarily by those utilities subscribing to the EUSERC metering standards.

Meter Centers

Single Position Meter Sockets—Residential Types^④

Selection



SUAT111-0PGP



SUAT111-0GF



SUAT111-0MXA

135 Amp Continuous Meter Mounting Equipment, Ringless Type, 1-Phase, 3-Wire 600V 1 Position

Catalog Number	Dimensions (inches)			Cont. Amps	Service	Lugs	No. of Jaws	5th Jaw	Hub	KO Fig.	Notes	List Price \$
	H	W	D									
HORN BYPASS												
SUAT111-0PZA	11.7	8.0	3.7	135	OH/UG	#14-2/0	4	EC659-0121	RX Opening	1	①	99.05
SUAT111-0PDN	11.7	8.0	3.7	135	OH/UG	#14-2/0	4	EC659-0121	RX Opening	1	⑥	106.50
SUAT111-0PGP	11.7	8.0	3.7	135	OH/UG	#14-2/0	4	EC659-0121	RX Opening	1	②	107.57
SUAT111-0PQG	11.7	8.0	3.7	135	OH/UG	#14-2/0	4	EC659-0121	RX Opening	1		95.85
NO BYPASS												
SUAT111-0JCA	11.7	8.0	3.7	135	OH/UG	#14-2/0	4	EC659-0121	RX Opening	1		108.63
SUAT111-0G	11.7	8.0	3.7	135	OH/UG	#14-2/0	4	EC659-0121	RX Opening	1		104.37
SUAT111-PG	11.7	8.0	3.7	135	UG	#14-2/0	4	EC659-0121	None	1		99.05
SUAT111-0MXA	11.7	8.0	3.7	135	OH/UG	#14-2/0	5	Installed	RX Opening	1	①	101.18
SUAT111-0GF	11.7	8.0	3.7	135	OH/UG	#14-2/0	4	EC659-0121	RX Opening	1	③ ⑦	92.66

135 Amp Continuous Meter Mounting Equipment, Ring Type, 1-Phase, 3-Wire 600V 1 Position

Catalog Number	Dimensions (inches)			Cont. Amps	Service	Lugs	No. of Jaws	5th Jaw	Hub	KO Fig.	Notes	List Price \$
	H	W	D									
NO BYPASS												
SUAT121-0GWR	11.7	8.0	3.7	135	OH/UG	#14-2/0	4	EC659-0121	RX Opening	1	⑤	103.31
SUAT121-BGWR	11.7	8.0	3.7	135	OH	#14-2/0	4	EC659-0121	EC38597 Inst.	1	⑤	106.50
SUAT121-PGWR	11.7	8.0	3.7	135	UG	#14-2/0	4	EC659-0121	None	1	⑤	99.05
SUAT121-BM	11.7	8.0	3.7	135	OH	#14-2/0	5	Installed	EC38597 Inst.	1		103.31
SUAT121-0BCO	11.7	8.0	3.7	135	OH/UG	#14-2/0	5	Installed	RX Opening	1	⑧	108.63
SUAT121-BBCO	11.7	8.0	3.7	135	OH	#14-2/0	5	Installed	EC38597 Inst.	1	⑧	107.57
SUAT121-PBCO	11.7	8.0	3.7	135	UG	#14-2/0	5	Installed	None	1	⑧	108.63

Contact utility or sales office for approval by your local utility prior to installation.

① Includes 7/16" Barrel lock KO for utility security lock.

② Includes 7/8" Barrel lock KO for utility security lock.

③ Stainless steel latch and hasp.

④ All devices on this page come with a ground lug. Quad neutrals are standard on every SUAT1, SUAT3, & SUAT4 device.

⑤ Sealing ring included.

⑥ For Duquense Light & Power.

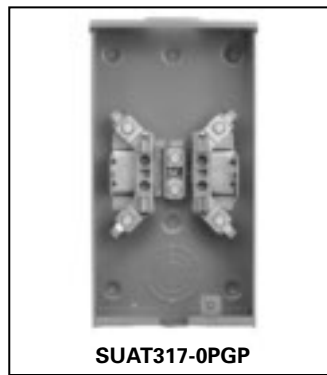
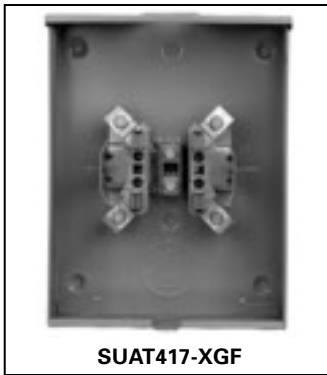
⑦ Approved for Florida Meter Group - overhead only.

⑧ For use in the Consolidated Edison territory.

Meter Centers

Single Position Meter Sockets—Residential Types ④

Selection



2
METER
CENTERS

200 Amp Continuous/250 Amp Max Meter Mounting Equipment, Ringless Type, 1-Phase, 3-Wire 600V 1 Position

Catalog Number	Dimensions (inches)			Cont. Amps	Service	Lugs (kcmil)	No. of Jaws	5th Jaw	Hub	KO Fig.	Notes	List Price \$
	H	W	D									
HORN BYPASS												
SUAT317-OPGP	14.8	8.0	4.5	200	OH	#6-350	4	EC659-0121	RX Opening	2	②	203.42
SUAT317-OPDN	14.8	8.0	4.5	200	OH	#6-350	4	EC659-0121	RX Opening	2	⑪	202.35
SUAT317-0FP	14.8	8.0	4.5	200	OH	#6-350	5	Installed	RX Opening	2	②	203.42
SUAT317-0PZA	14.8	8.0	4.5	200	OH	#6-350	4	EC659-0121	RX Opening	2	①	138.45
SUAT317-0PQG	14.8	8.0	4.5	200	OH	#6-350	4	EC659-0121	RX Opening	2		138.45
SUAT317-0PCV	14.8	8.0	4.5	200	OH	#6-350	4	EC659-0121	RX Opening	2	⑬	223.65
SUAT417-XPOG	14.8	11.0	4.5	200	OH/UG	#6-350	4	EC659-0121	RX CL. Plate	3A		187.44
SUAT417-XFP	14.8	11.0	4.5	200	OH/UG	#6-350	5	Installed	RX CL. Plate	3A	②	203.42
SUAT417-0POG	14.8	11.0	4.5	200	OH/UG	#6-350	4	EC659-0121	RX Opening	3A		214.07
SUAS877-PPDN	14.0	13.0	5.1	200	UG-SW	#6-350	4	EC659-0121	None	6	⑪ ⑨	264.12
SUAS877-PPZA	14.0	13.0	5.1	200	UG-SW	#6-350	4	EC659-0121	None	6	① ⑨	267.32
SUAS877-PPGP	14.0	13.0	5.1	200	UG-SW	#6-350	5	EC659-0121	None	6	② ⑨	275.84
SUAS877-PPZ	14.0	13.0	5.1	200	UG-SW	#6-350	4	EC659-0121	None	6	⑨	264.12
SUAS817-PPGP	14.0	13.0	5.1	200	UG-SW	#6-350	4	EC659-0121	None	8	② ⑫	275.84
SUAS877-PPCV	14.0	13.0	5.1	200	UG-SW	#6-350	4	EC659-0121	None	8	⑬	290.75
NO BYPASS												
SUAT317-0MXA	14.8	8.0	4.5	200	OH	#6-350	5	Installed	RX Opening	2	①	203.42
SUAT317-0GF	14.8	8.0	4.5	200	OH	#6-350	4	EC659-0121	RX Opening	2	③ ⑧	161.88
SUAT317-0G	14.8	8.0	4.5	200	OH	#6-350	4	EC659-0121	RX Opening	2		146.97
SUAT317-DGZ	14.8	8.0	4.5	200	OH	#6-350	4	EC659-0121	EC38599 Inst.	2		131.00
SUAT417-XGDU	14.8	11.0	4.5	200	OH/UG	#6-350	4	EC659-0121	RX CL. Plate	3A		204.48
SUAT417-XGF	14.8	11.0	4.5	200	OH/UG	#6-350	4	EC659-0121	RX CL. Plate	3A	③ ⑧	138.45
SUAT417-XG	14.8	11.0	4.5	200	OH/UG	#6-350	4	EC659-0121	RX CL. Plate	3A		192.77
SUAT417-PG	14.8	11.0	4.5	200	UG	#6-350	4	EC659-0121	None	3B		103.31
SUAT517-PDG	19.0	13.5	5.1	200	UG	#6-350	4	EC659-0121	None	4	①	166.14
SUAT618-XGNM	22.0	11.0	4.5	200	OH/UG	#6-350	4	EC659-0121	RX CL. Plate	5	⑤	320.57
SUAS877-PG	14.0	13.0	5.1	200	UG-SW	#6-350	4	EC659-0121	None	6	⑨	264.12
SUAS818-PGNM	14.0	13.0	5.1	200	UG-SW	#6-350	4	EC659-0120	None	8	⑤ ⑫	280.10
SUAS917-XJCA	17.0	13.0	5.1	200	OH/UG-SW	#6-350	4	EC659-0121	RX CL. Plate	7	⑫	285.42

200 Amp Continuous/250 Amp Max Meter Mounting Equipment, Ring Type, 1-Phase, 3-Wire 600V 1 Position

Catalog Number	Dimensions (inches)			Cont. Amps	Service	Lugs	No. of Jaws	5th Jaw	Hub	KO Fig.	Notes	List Price \$
	H	W	D									
NO BYPASS												
SUAT327-0MCO	14.8	8.0	4.5	200	OH	#6-350	5	Installed	RX Opening	2	⑥ ⑦	140.58
SUAT327-0GWR	14.8	8.0	4.5	200	OH	#6-350	4	EC659-0121	RX Opening	2	⑥	123.00
SUAT427-PMCO	14.8	11.0	4.5	200	UG	#6-350	5	Installed	None	3B	⑥ ⑦	174.66
SUAT427-XMWR	14.8	11.0	4.5	200	OH/UG	#6-350	4	EC659-0121	RX CL. Plate	3A	⑥ ⑩	161.88

Contact utility or sales office for approval by your local utility prior to installation.

- ④ Includes 7/16" Barrel lock KO for utility security lock.
- ⑤ Includes 7/8" Barrel lock KO for utility security lock.
- ⑥ Stainless steel latch and hasp.
- ⑦ A quad neutral is standard on all SUAT1, SUAT3, & SUAT4 devices.
- ⑧ Device has line side studs. For use in the Niagara-Mohawk territory.

- ⑨ Sealing ring included.
- ⑩ For use in the Consolidated Edison territory.
- ⑪ For use in the Florida Meter Group territory.
- ⑫ "-SW" indicates an offset or side wire design. Meter is on right.

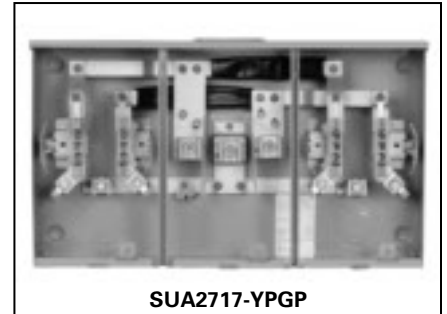
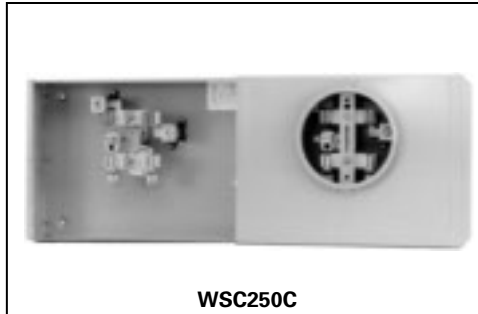
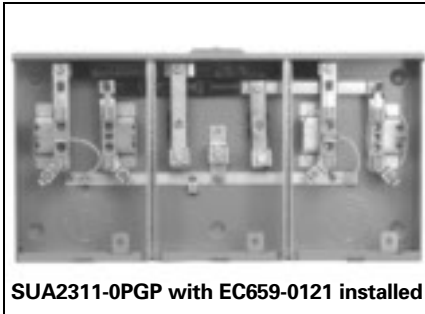
- ⑬ May be used for overhead services in the EUSERC territories.
- ⑭ For Duquense Light & Power.
- ⑮ "-SW" indicates an offset or side wire design. Meter is on left.
- ⑯ For use on the Atlantic Electric & Delmarva Service areas only.

Meter Centers

Single & Multiple Position Meter Sockets—Residential Types

Selection

METER CENTERS 2



100 Amp/Position Meter Mounting Equipment, Ringless Type, 1-Phase, 3-Wire 300V Multi-Position®

Catalog Number	Dimensions (inches)			Bus Amps	Cont. Amps	Service	No. of Pos.	No. of Jaws	5th Jaw	Hub	Notes	KO Fig.	Line Lugs	Load Lugs	List Price \$
	H	W	D												
HORN BYPASS															
SUA2311-0PGP	12.0	24.0	4.5	100	100	OH/UG	2	4	EC659-0121	RX Opening	② ④	16	#6-350	#14-2/0	324.83
SUA2311-0PQG	12.0	24.0	4.5	100	100	OH/UG	2	4	EC659-0121	RX Opening	⑤	16	#6-350	#14-2/0	347.19
SUA3311-0PGP	12.0	32.0	4.5	135	100	OH/UG	3	4	EC659-0121	RX Opening	② ④	17	#6-350	#14-2/0	455.82
SUA3311-0PQG	12.0	32.0	4.5	135	100	OH/UG	3	4	EC659-0121	RX Opening	⑤	17	#6-350	#14-2/0	477.12
SUA4311-0PGP	12.0	40.0	4.5	180	100	OH/UG	4	4	EC659-0121	RX Opening	② ④	18	#6-350	#14-2/0	590.01
SUA4311-0PQG	12.0	40.0	4.5	180	100	OH/UG	4	4	EC659-0121	RX Opening	⑤	18	#6-350	#14-2/0	610.25

200 Amp/Position Meter Mounting Equipment, Ringless Type, 1-Phase, 3-Wire 300V Multi-Position®

Catalog Number	Dimensions (inches)			Bus Amps	Cont. Amps	Service	No. of Pos.	No. of Jaws	5th Jaw	Hub	Notes	KO Fig.	Line Lugs (kcmil)	Load Lugs (kcmil)	List Price \$
	H	W	D												
HORN BYPASS															
SUA2717-YPDN	14.5	24.0	5.1	200	200	OH/UG	2	4	EC659-0121	HD Opening	① ③ ④	19	#1/0-600	#6-350	337.61
SUA2717-YPGP	14.5	24.5	5.1	200	200	OH/UG	2	5	Installed	HD CL. Plate	② ④	19	#1/0-600	#6-350	337.61
SUA2717-YPQG	14.5	24.0	5.1	200	200	OH/UG	2	4	EC659-0121	HD Opening	① ⑤	19	#1/0-600	#6-350	358.91
SUA2717-YPZA	14.5	24.0	5.1	200	200	OH/UG	2	4	EC659-0121	HD Opening	① ④	19	#1/0-600	#6-350	337.61
SUA3717-YPDN	14.5	32.0	5.1	270	200	OH/UG	3	4	EC659-0121	HD Opening	① ③ ④	20	#1/0-600	#6-350	498.42
SUA3717-YPGP	14.5	33.3	5.1	270	200	OH/UG	3	5	Installed	HD CL. Plate	② ④	20	#1/0-600	#6-350	498.42
SUA3717-YPZA	14.5	32.0	5.1	270	200	OH/UG	3	4	EC659-0121	HD Opening	① ④	20	#1/0-600	#6-350	498.42
SUA4719-YPDN	14.5	43.0	5.1	360	200	OH/UG	4	4	EC659-0121	HD Opening	① ③ ④	21	(2)#1/0-600	#6-350	597.47
SUA4719-YPGP	14.5	43.0	5.1	360	200	OH/UG	4	5	Installed	HD CL. Plate	② ④	21	(2)#1/0-600	#6-350	597.47
SUA4719-YPQG	14.5	43.0	5.1	360	200	OH/UG	4	4	EC659-0121	HD Opening	① ⑤	21	(2)#1/0-600	#6-350	617.70
SUA4719-YPZA	14.5	43.0	5.1	360	200	OH/UG	4	4	EC659-0121	HD Opening	① ④	21	(2)#1/0-600	#6-350	597.47
SUA5719-KPGP	14.5	51.0	5.1	450	200	OH/UG	5	4	EC659-0121	2-HD Opening	② ④	22	(2)#1/0-600	#6-350	687.99
SUA5719-KPDN	14.5	51.0	5.1	450	200	OH/UG	5	4	EC659-0121	2-HD Opening	① ③ ④	22	(2)#1/0-600	#6-350	772.13
SUA6719-KPOG	14.5	59.0	5.1	528	200	OH/UG	6	4	EC659-0121	2-HD Opening	① ⑤	23	(2)#1/0-600	#6-350	1082.04
SUA6719-KPZA	14.5	59.0	5.1	528	200	OH/UG	6	4	EC659-0121	2-HD Opening	① ④	23	(2)#1/0-600	#6-350	1082.04

100/80 Amp/Position Meter Mounting Equipment, Ring Type, 1-Phase, 3-Wire 300V Multi-Position

Catalog Number	Dimensions (inches)			Bus Amps	Cont. Amps	Service	No. of Pos.	No. of Jaws	5th Jaw	Hub	Notes	KO Fig.	Line Lugs (kcmil)	Load Lugs (kcmil)	List Price \$
	H	W	D												
NO BYPASS															
WSC150C	11.3	15.3	3.8	-	80	OH/UG	1	5	WSX019	1.25" KO	⑦ ⑩	24	#6-4/0	#8-2/0	165.00
WSC250C	11.3	30.5	3.8	-	80	OH/UG	2	5	WSX019	1.25" KO	⑦ ⑩	25	#6-4/0	#8-2/0	330.00
WSC350C	11.3	45.5	3.8	-	80	OH/UG	3	5	WSX019	1.25" KO	⑦ ⑩	26	#6-4/0	#8-2/0	497.00
WSN251CR	13.5	16.8	4.1	200	100	OH/UG	2	5	Installed	RX CL. Plate	⑨ ⑥	30	#6-250	#8-2/0	404.70
WSN351CR	13.5	25.5	4.1	200	100	OH/UG	3	5	Installed	RX CL. Plate	⑨ ⑥	31	#6-250	#8-2/0	588.95
WSN451CR	13.5	34.1	4.1	200	100	OH/UG	4	5	Installed	RX CL. Plate	⑨ ⑥	32	#6-250	#8-2/0	773.19

Contact utility or sales office for approval by your local utility prior to installation.

- ① Includes 7/16" Barrel lock KO for utility security lock.
- ② Includes 7/8" Barrel lock KO for utility security lock.
- ③ For Duquense Light & Power.
- ④ Ground lug included.
- ⑤ (2) Ground lugs included.

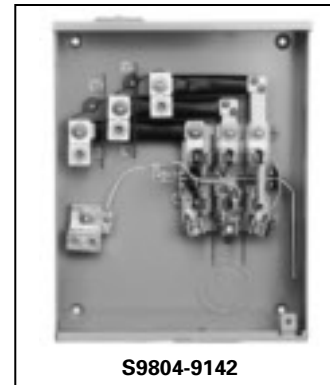
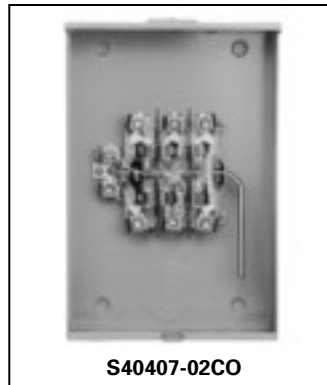
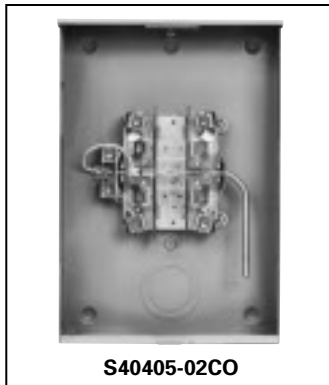
- ⑥ Sealing ring included.
- ⑦ Unit is unbusbed and indoor.
- ⑧ Center feed.
- ⑨ End feed.

- ⑩ Devices are gangable. Use strap #WSX008M to gang devices together. For use in New York City only (Con Ed).

Meter Centers

Single Position Meter Sockets—Commercial/Industrial Types

Selection



2
METER
CENTERS

200 Amp Continuous Meter Mounting Equipment, Ringless Type, Lever Bypass, 1-Phase, 3-Wire^⑦

Catalog Number	Dimensions (inches)			Cont. Amps	Service	Lugs	No. of Jaws	Hub Opening	KO Fig.	Notes	List Price \$
	H	W	D								
4 OR 5 TERMINAL											
S40404-02QG	19.0	13.0	5.0	200	OH/UG	#6-350 kcmil	4	RX CL. Plate	9	⑤	431.00
S40405-02QG	19.0	13.0	5.0	200	OH/UG	#6-350 kcmil	5	RX CL. Plate	9	⑤	478.19
S40405-015F	19.0	13.0	5.0	200	OH/UG	#6-350 kcmil	5	RX CL. Plate	9	② ③ ④ ⑧	473.93
S42505-02RG	19.0	13.0	5.0	200	OH/UG	3/8-24 Stud	5	RX CL. Plate	9	④ ⑥	463.28
S40405-025	19.0	13.0	5.0	200	OH/UG	#6-350 kcmil	5	RX CL. Plate	9		459.02
S40405-02CO	19.0	13.0	5.0	200	OH/UG	#6-350 kcmil	5	RX CL. Plate	9	② ④ ⑨	459.02
S40405-0BNU	28.0	13.0	5.0	200	OH/UG	#6-350 kcmil	5	RX Opening	9	①	448.37
S48805-0BNU	22.0	16.0	5.0	200	OH/UG	#6-350 kcmil	5	RX CL. Plate	10	① ④ ⑩	548.48
S44305-02CV	19.0	13.0	5.0	200	OH/UG	#6-350 kcmil	5	HD CL. Plate	9	⑪	578.00

200 Amp Continuous Meter Mounting Equipment, Ringless Type, Lever Bypass, 3-Phase, 4-Wire 600V

Catalog Number	Dimensions (inches)			Cont. Amps	Service	Lugs	No. of Jaws	Hub Opening	KO Fig.	Notes	List Price \$
	H	W	D								
7 TERMINAL											
S40007-01GP	17.0	10.0	5.0	200	OH	#6-350 kcmil	7	RX Opening	10	② ④	594.27
S40407-02QG	19.0	13.0	5.0	200	OH/UG	#6-350 kcmil	7	RX CL. Plate	9	⑤	594.27
S40407-025	19.0	13.0	5.0	200	OH/UG	#6-350 kcmil	7	RX CL. Plate	9	—	604.92
S40407-015F	19.0	13.0	5.0	200	OH/UG	#6-350 kcmil	7	RX CL. Plate	9	② ③ ④ ⑧	604.92
S40407-02CO	19.0	13.0	5.0	200	OH/UG	#6-350 kcmil	7	RX CL. Plate	9	② ④ ⑨	581.49
S40407-01NU	19.0	13.0	5.0	200	OH/UG	#6-350 kcmil	7	RX Opening	9	① ④	532.50
S9804-9142	20.0	16.0	5.0	200	UG-SW	#6-350 kcmil	7	RX CL. Plate	33	② ④	717.81
S48807-02NU	22.0	16.0	5.0	200	OH/UG	#6-350 kcmil	7	RX CL. Plate	10	① ④ ⑩	630.48
S44307-02CV	19.0	13.0	5.0	200	OH/UG	#6-350 kcmil	7	HD CL. Plate	9	⑪	630.00

Contact utility or sales office for approval by your local utility prior to installation.

① Includes 7/16" Barrel lock KO for utility security lock.
 ② Includes 7/8" Barrel lock KO for utility security lock.
 ③ Stainless steel latch and hasp
 ④ Ground lug included
 ⑤ (2) Ground lugs included

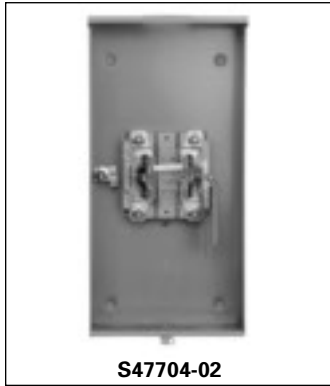
⑥ Lugs not included, order separately
 ⑦ 5-jaw devices can be used for 3-phase 3-wire service if an isolated neutral kit is used.
 ⑧ For use in the Florida Meter Group territory.
 ⑨ For use in the Consolidated Edison territory.

⑩ For use in the Northeast Utilities service area.
 ⑪ For use in the Atlantic Electric & Delmarva Service areas.

Meter Centers

Single Position Meter Sockets—Commercial/Industrial Types

Selection



320 Amp Continuous/400 Amp Max Meter Mounting Equipment, Ringless Type, Lever Bypass, 1-Phase, 3-Wire

Catalog Number	Dimensions (inches)			Cont. Amps	Service	Lugs®	No. of Jaws	Hub Opening	KO Fig.	Notes	List Price \$
	H	W	D								
4 OR 5 TERMINAL											
S48704-82GP	34.0	20.0	6.0	320	OH/UG-SW	#4-600	4	HD CL. Plate	11	② ④ ⑥ ⑩	719.94
S48104-02	31.0	16.0	5.0	320	OH/UG-SW	3/8-24 Stud	4	HD CL. Plate	14	② ④ ⑦ ⑩	1016.01
S48504-92	28.0	13.0	5.0	320	UG	3/8-24 Stud	4	None	35	④ ⑦	759.35
S47604-81GP	28.0	13.0	5.0	320	OH/UG	#4-600	4	HD Opening	12	② ④ ⑥	743.37
S47704-02	28.0	14.0	6.0	320	OH/UG	1/2-20 Stud	4	HD CL. Plate	13	⑦	787.04
S47704-01NU	28.0	14.0	6.0	320	OH/UG	1/2-20 Stud	4	HD Opening	13	② ④ ⑦	647.52
S9804-9144	25.0	16.0	6.0	320	OH/UG	3/8-24 Stud	4	HD Opening	13	① ④ ⑦	498.42
S9804-9146	34.0	20.0	6.0	320	OH/UG	3/8-24 Stud	4	HD CL. Opening	11	① ④ ⑦	749.76
S47605-02SP	28.0	13.0	5.0	320	OH/UG	3/8-24 Stud	5	HD CL. Plate	12	② ④ ⑦	460.08
S47705-01NU	28.0	14.0	6.0	320	OH/UG	1/2-20 Stud	5	HD Opening	13	② ④ ⑦	773.19
S48105-83BU	31.0	16.0	5.0	320	OH/UG-SW	#4-600	5	HD CL. Plate	14	② ④ ⑩	717.81
S44704-8265	20.0	34.0	6.0	320	OH/UG-SW	#4-600	4	HD CL. Plate	11	④ ⑥ ⑩	1135.29

320 Amp Continuous/400 Amp Max Meter Mounting Equipment, Ringless Type, Lever Bypass, 3-Phase, 4-Wire 600V

Catalog Number	Dimensions (inches)			Cont. Amps	Service	Lugs®	No. of Jaws	Hub Opening	KO Fig.	Notes	List Price \$
	H	W	D								
7 TERMINAL											
S47707-01NU	28.0	14.0	6.0	320	OH/UG	1/2-20 Stud	7	HD Opening	13	① ④ ⑦	773.19
S47707-02	28.0	14.0	6.0	320	OH/UG	3/8-24 Stud	7	HD CL. Plate	14	⑦	773.19
S48707-82GP	34.0	20.0	6.0	320	OH/UG-SW	#4-600	7	HD CL. Plate	11	② ④ ⑥ ⑩	870.11
S9804-9145	25.0	16.0	6.0	320	OH/UG	3/8-24 Stud	7	HD Opening	34	① ④ ⑦	634.74
S9804-9147	34.0	20.0	6.0	320	OH/UG	3/8-24 Stud	7	HD Opening	11	① ④ ⑦	890.34

400 Amp Continuous/400 Amp Max Meter Mounting Equipment, Ringless Type, No Bypass, 3-Phase, 4-Wire 600V

Catalog Number	Dimensions (inches)			Cont. Amps	Service	Lugs®	No. of Jaws	Hub Opening	KO Fig.	Notes	List Price \$
	H	W	D								
7 TERMINAL - Landis & Gyr Type K7 Bolt-in Socket											
S9817-8061	34.0	20.0	6.0	400	UG	1/2-20 Stud	7	HD CL Plate	15	③ ④ ⑦ ⑧ ⑨	1917.00

Contact utility or sales office for approval by your local utility prior to installation.

① Includes 7/16" Barrel lock KO for utility security lock.
 ② Includes 7/8" Barrel lock KO for utility security lock.
 ③ Stainless steel latch and hasp.
 ④ Ground lug included.
 ⑤ (2) Ground lugs included.

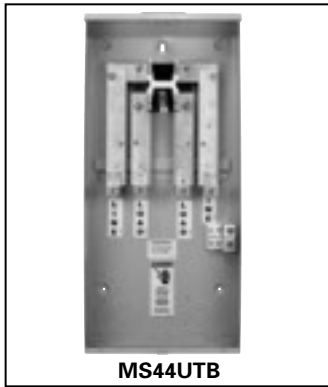
⑥ Anti-inversion clip included.
 ⑦ Lugs not included, order separately.
 ⑧ Bolt-in meter socket.
 ⑨ No bypass installed.

⑩ Lugs should be chosen based on # of cables, size of wire, and size of stud. See accessories section for more information.
 ⑪ "-SW" indicates offset or side wire design. Meter is on right.

Meter Centers

EUSERC Meter Sockets—Test Block Bypass & Transformer Rated Metering

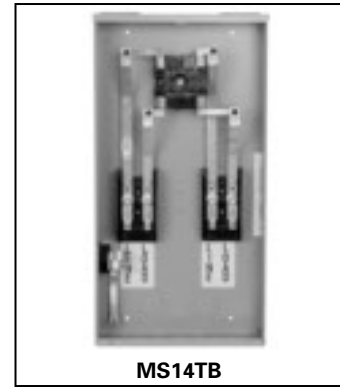
Selection



MS44UTB



MS24TB



MS14TB

2
METER
CENTERS

Ring Type EUSERC-Approved Safety Sockets^① (Test Block Bypass)

Catalog Number	Dimensions (inches) ^②			Amps Cont. Duty	Service	Hub	No. of Jaws	5th Jaw	Wire Range Cu/Al	KO Fig.	List Price \$
	L	W	D								
MS14TB	24%	12%	4%	100	1 ϕ -3W	RX	4	UX005B	#6-2/0 Box Lug	39	545.00
MS15TB	24%	12%	4%		3 ϕ -3W	RX	5	INSTALLED		39	720.00
MS17TB	24%	12%	4%		3 ϕ -4W	RX	7	—		39	781.00
MS24TB	30%	14%	6%	200	1 ϕ -3W	RX	4	UX001WL	#1/0-250 kcmil Lay-in Lug	40	1017.00
MS25TB	30%	14%	6%		3 ϕ -3W	HC	5	INSTALLED		41	1194.00
MS27TB	30%	14%	6%		3 ϕ -4W	RX	7	—		40	1343.00
MS44UTB	34%	15%	6%	320	1 ϕ -3W	HD	4	—	(2)1/0-250 kcmil or (1)#4-600 kcmil	44	2500.00

400 Ampere Transformer Rated CT-Meter Cabinet, (No Disconnect) 600V AC Max.^{②③}

Catalog Number	Dimensions (inches)			No. of Jaws	Hub	KO Fig.	List Price \$
	Height	Width	Depth				

1 Phase-3 Wire

RTU121814	52.00	24.00	11.00	4	—	42	1317.00
RTU121815	52.00	24.00	11.00	5	—	42	1329.00

3 Phase-3 Wire

RTU121818	52.00	24.00	11.00	8	—	42	1419.00
-----------	-------	-------	-------	---	---	----	---------

3 Phase-3 Wire or 3 Phase-4 Wire

RT121413	20.00	12.00	4.63	13	RX	43	749.76
RTU122015	52.00	36.00	11.00	15	—	42	2192.00

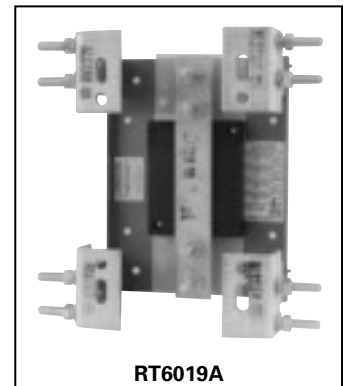
CT Mounting Bases-400 Amp Max.

Catalog Number	Service	Max. AIC	Wire Range	List Price \$
RT6019A	1 Phase/3 Phase-3 Wire	10,000	(2) NEMA Studs	356.00
RT6019HA	1 Phase- 3 Wire	50,000	(2) NEMA Studs	447.00
RT6067A	3 Phase- 4 Wire	10,000	(2) NEMA Studs	665.00
RT6067HA	3 Phase- 4 Wire	50,000	(2) NEMA Studs	779.00

Contact utility or sales office for approval by your local utility prior to installation.



RTU121815



RT6019A

① Ground lug included.

② CT mounting base not included, order from chart below.

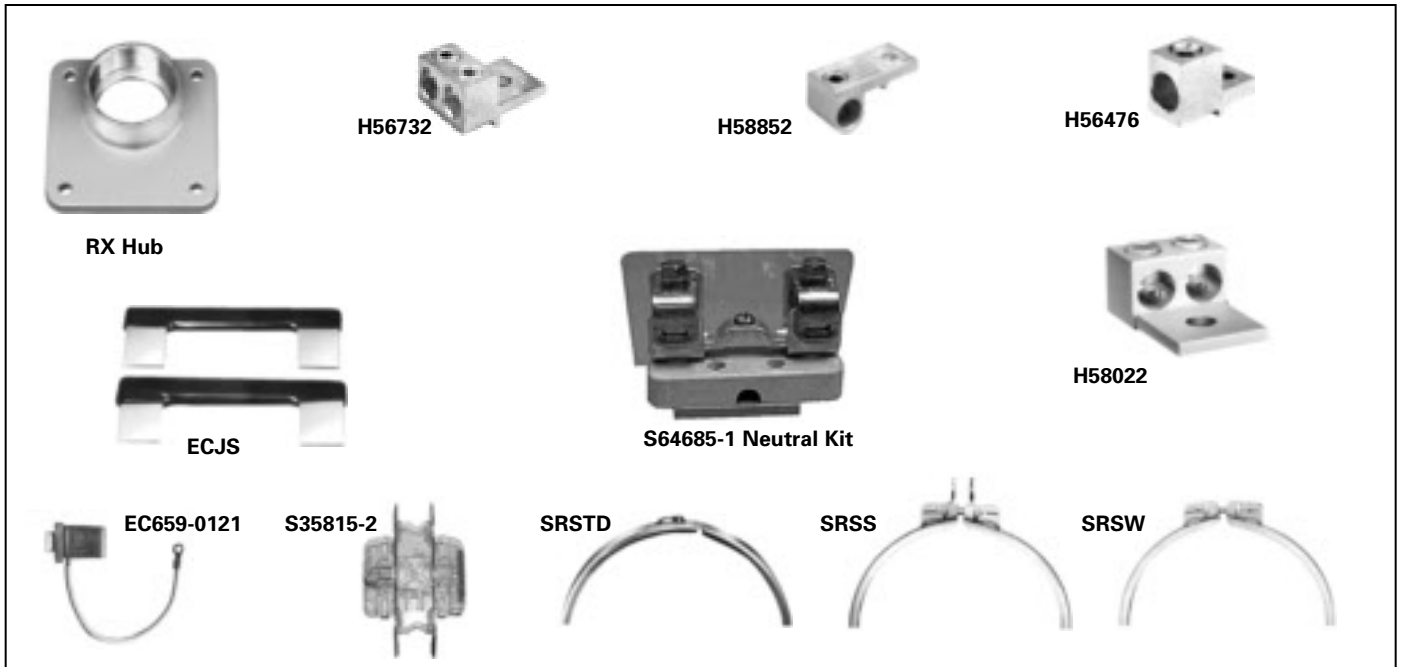
③ Includes Test Switch mounting provision, and hub opening for overhead feed.

Meter Centers

Accessories

Selection

2
METER
CENTERS



5TH & 6TH Jaw Assemblies

For Use With	Catalog Number	List Price \$
All SUAXxxx single and multiple position sockets	EC659-0121-grounded	18.00
All SUAXxxx single and multiple position sockets	EC659-0120-insulated	18.53
All Lever Bypass single position sockets	S35815-2	123.54
SC and SD Unbussed Multiple-5th Jaw	WSX019	11.40
Anti-Inversion clip for use with 320amp sockets when required	H59676	24.50

Sealing Rings

Description	Catalog Number	List Price \$
Snap-On Type, aluminum	SRSTD	17.47
Snap-On Type, steel	SRSS	19.38
Screw Type, aluminum	SRSW	25.03

Miscellaneous Accessories

Description	Catalog Number	List Price \$
Insulated Neutral Kit for "S404xx" sockets	EC64685	64.00
Isolated Neutral Kit for S9817-8061	S69685-1	218.00
Bypass Kit for S9817-8061	S69623	132.06
Jumper-200 Amp Rated-use on SUAXxxx sockets only	ECJS	36.74
Plastic Meter Cover- Ring	ECPP	19.00
Plastic Meter Cover- Ringless	ECCP3	21.00
Neutral Isolation kit for 200amp lever bypass sockets	64690-1	34.08

Interchangeable Hubs

Description	Catalog Number	Hub Size (Inches)	List Price \$
-------------	----------------	-------------------	---------------

RX CONDUIT HUBS

	EC38594	¾	22.90
	EC38596	1	37.81
	EC38597	1¼	37.81
	EC38598	1½	23.96
	EC38599	2	23.96
	EC38600	2½	107.57
Closure Plate	EC38595	—	38.34

HC CONDUIT HUBS

	EHC200	2	72.00
	EHC250	2½	108.00
	EHC300	3	175.00
Closure Plate	EHC000	—	24.00

HD CONDUIT HUBS

	EC56856	3	178.92
	EC56857	3½	263.06
	EC56858	4	119.28
Adapter Plate convert HD to RX	EC9747-1113	—	28.76
Closure Plate	EC56933S	—	76.68

Lugs for Sockets with Stud Terminals^①

Catalog Number	For Use With	Wire Range	List Price \$
H58852	Line side of S9817 Socket on UG Applications	(1) 3/0-800 kcmil	47.50
H56732	Line & Load of S477 & Load/Neutral of S9817 Sockets	(2) #4-350 kcmil	35.00
H56476	Line & Load of S477 & Load/Neutral of S9817 Sockets	(1) 3/0-800 kcmil	44.00
H58022	Any socket with 3/8" Stud Terminals	(2) #6-250 kcmil	33.00
H55890	Any socket with 3/8" Stud Terminals	(1) #6-350 kcmil	22.00

^① Each lug catalog number contains one lug unless otherwise noted. Order enough lugs to cover all terminations.

Meter Centers

Knockout Diagrams

Selection

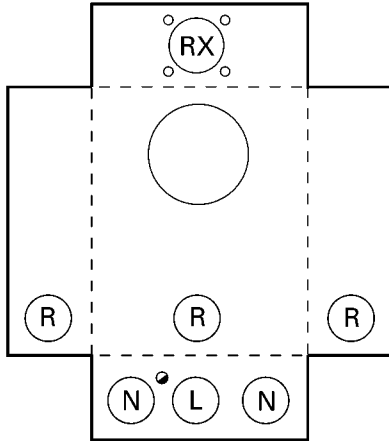


Figure 1

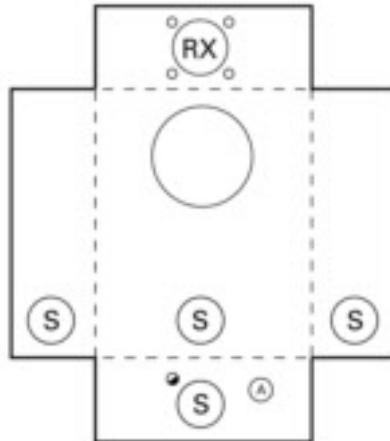


Figure 2

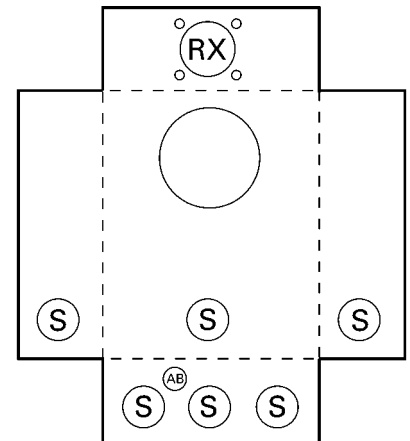


Figure 3

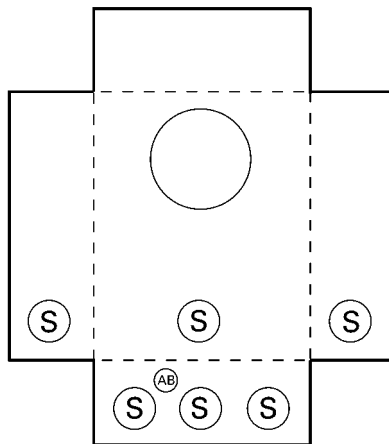


Figure 3B

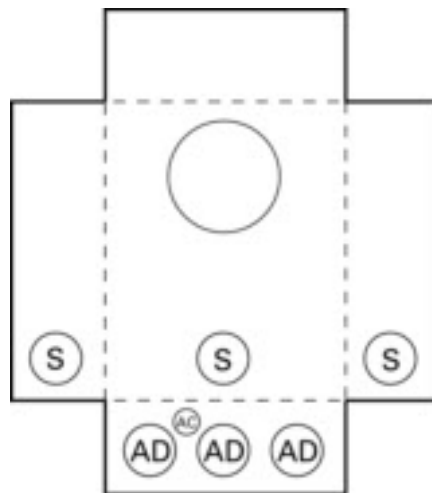


Figure 4

KNOCKOUTS (inches):

Ø:	1/4
A:	1/2
B:	1/2, 3/4
L:	1/2, 3/4, 1, 1-1/4, 1-1/2
N:	3/4, 1, 1-1/4, 1-1/2, 2
P:	1, 1-1/4
R:	1, 1-1/4, 1-1/2, 2
S:	1, 1-1/4, 1-1/2, 2, 2-1/2
X:	1-1/4, 1-1/2, 2, 2-1/2
Z:	1-1/2, 2, 2-1/2
EE:	2, 2-1/2, 3
GG:	2-1/2, 3, 3-1/2
HH:	2-1/2, 3, 3-1/2, 4
AB:	1/4, 1/2, 7/8
AC:	1/4, 1/2
AD:	1-1/4, 1-1/2, 2, 2-1/2, 3
AE:	1/4, 1/2, 3/4, 1, 1-1/4
AF:	1, 1-1/2, 2, 2-1/2, 3
AG:	3/4, 1, 1-1/4, 1-1/2, 2, 2-1/2, 3
AH:	1/4, 1/2, 3/4
AI:	1, 1-1/4, 1-1/2, 2, 2-1/2, 3
HD:	Ø4.281 HUB 0P
RX:	Ø2.750 HUB 0P

Meter Centers

Knockout Diagrams

Selection

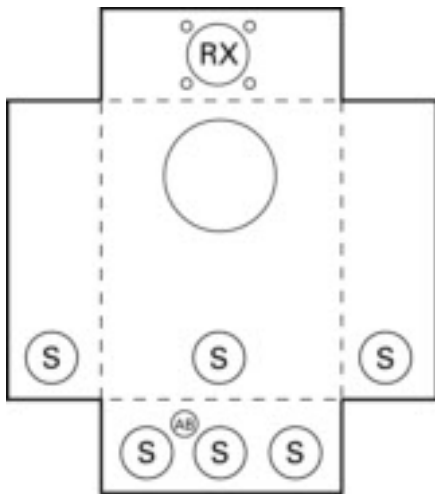


Figure 5

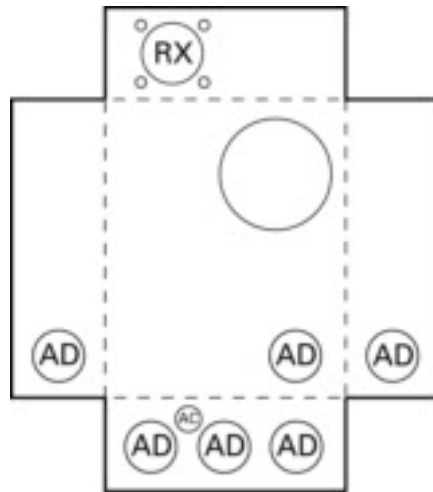


Figure 6

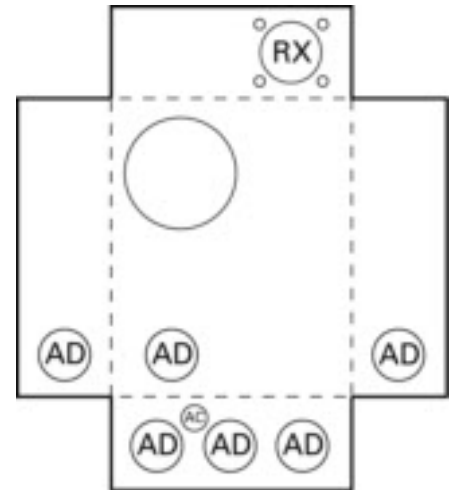


Figure 7

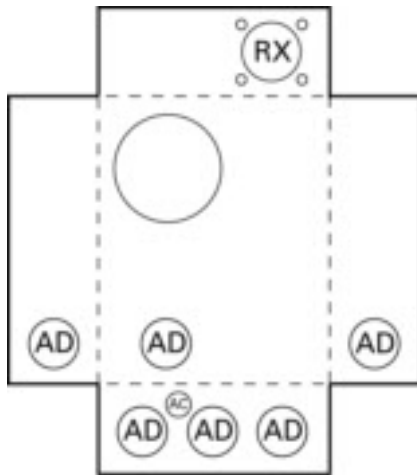


Figure 8

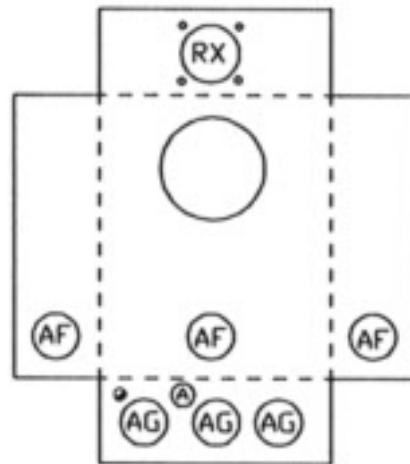


Figure 9

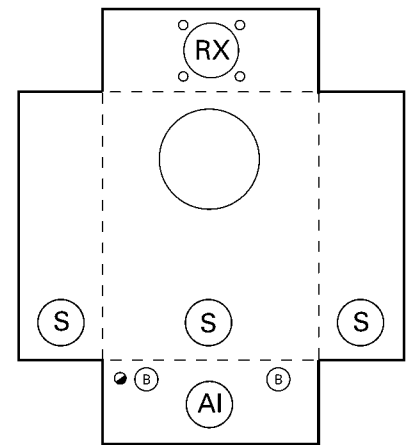


Figure 10

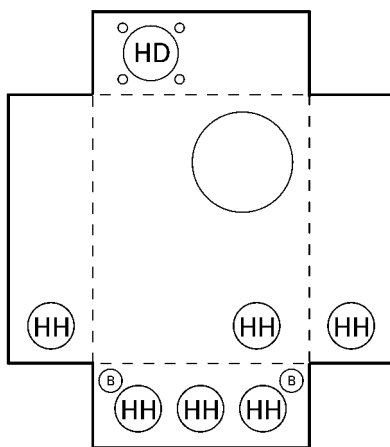


Figure 11

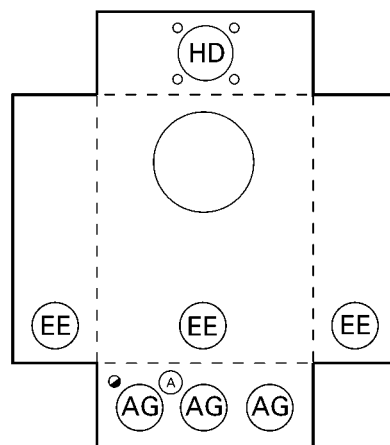


Figure 12

KNOCKOUTS (inches):

●	1/4
A:	1/2
B:	1/2, 3/4
L:	1/2, 3/4, 1, 1-1/4, 1-1/2
N:	3/4, 1, 1-1/4, 1-1/2, 2
P:	1, 1-1/4
R:	1, 1-1/4, 1-1/2, 2
S:	1, 1-1/4, 1-1/2, 2, 2-1/2
X:	1-1/4, 1-1/2, 2, 2-1/2
Z:	1-1/2, 2, 2-1/2
EE:	2, 2-1/2, 3
GG:	2-1/2, 3, 3-1/2
HH:	2-1/2, 3, 3-1/2, 4
AB:	1/4, 1/2, 7/8
AC:	1/4, 1/2
AD:	1-1/4, 1-1/2, 2, 2-1/2, 3
AE:	1/4, 1/2, 3/4, 1, 1-1/4
AF:	1, 1-1/2, 2, 2-1/2, 3
AG:	3/4, 1, 1-1/4, 1-1/2, 2, 2-1/2, 3
AH:	1/4, 1/2, 3/4
AI:	1, 1-1/4, 1-1/2, 2, 2-1/2, 3
HD:	Ø4.281 HUB 0P
RX:	Ø2.750 HUB 0P

Meter Centers

Knockout Diagrams

Selection

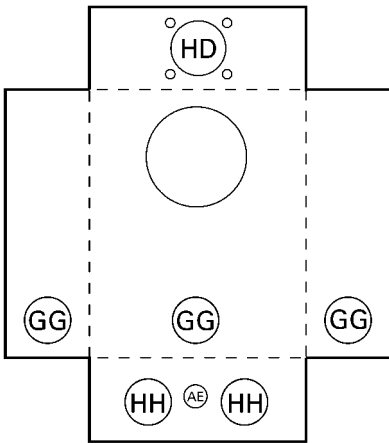


Figure 13

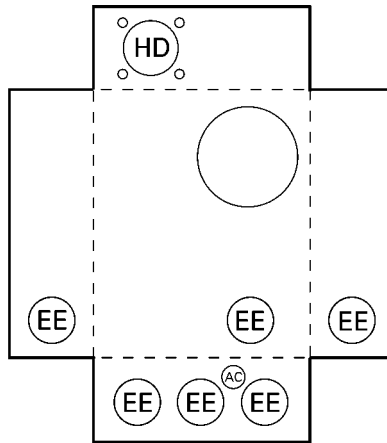


Figure 14

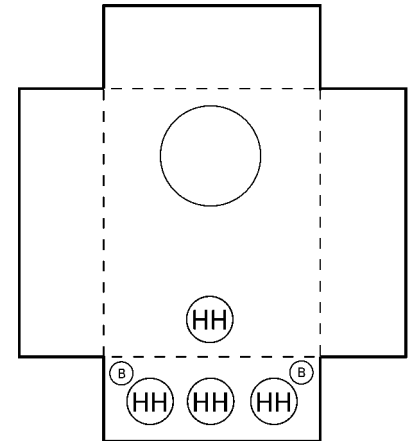


Figure 15

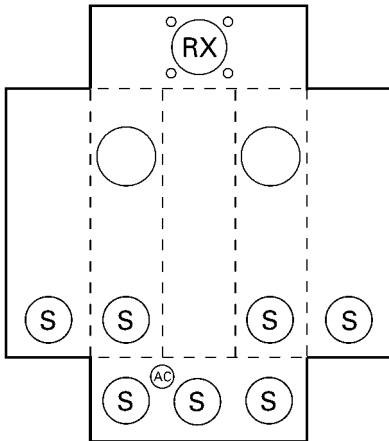


Figure 16

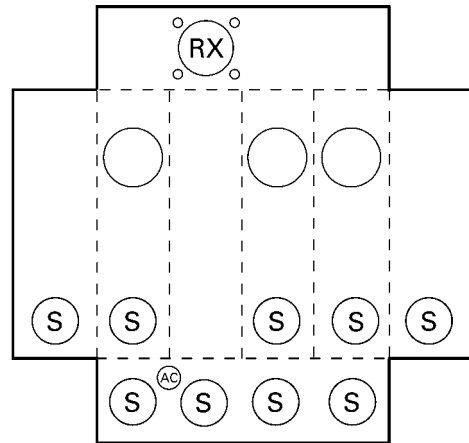


Figure 17

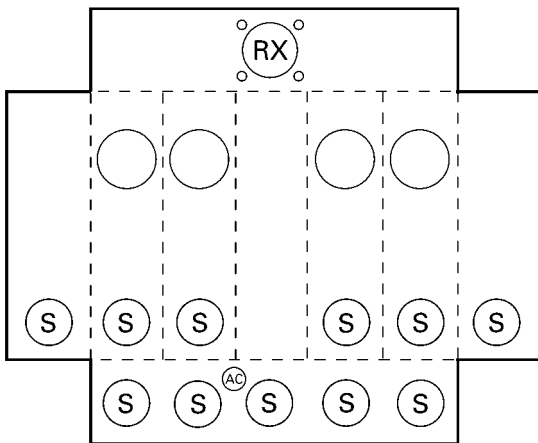


Figure 18

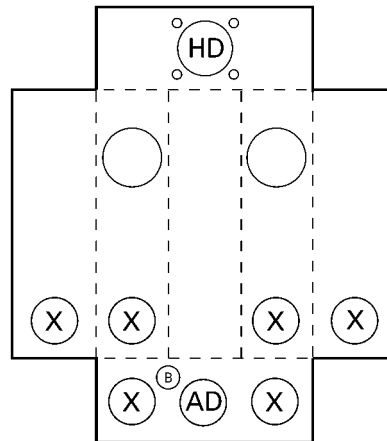


Figure 19

KNOCKOUTS (inches):

●	1/4
A:	1/2
B:	1/2, 3/4
L:	1/2, 3/4, 1, 1-1/4, 1-1/2
N:	3/4, 1, 1-1/4, 1-1/2, 2
P:	1, 1-1/4
R:	1, 1-1/4, 1-1/2, 2
S:	1, 1-1/4, 1-1/2, 2, 2-1/2
X:	1-1/4, 1-1/2, 2, 2-1/2
Z:	1-1/2, 2, 2-1/2
EE:	2, 2-1/2, 3
GG:	2-1/2, 3, 3-1/2
HH:	2-1/2, 3, 3-1/2, 4
AB:	1/4, 1/2, 7/8
AC:	1/4, 1/2
AD:	1-1/4, 1-1/2, 2, 2-1/2, 3
AE:	1/4, 1/2, 3/4, 1, 1-1/4
AF:	1, 1-1/2, 2, 2-1/2, 3
AG:	3/4, 1, 1-1/4, 1-1/2, 2, 2-1/2, 3
AH:	1/4, 1/2, 3/4
AI:	1, 1-1/4, 1-1/2, 2, 2-1/2, 3
HD:	Ø4.281 HUB OP
RX:	Ø2.750 HUB OP

Meter Centers

Knockout Diagrams

Selection

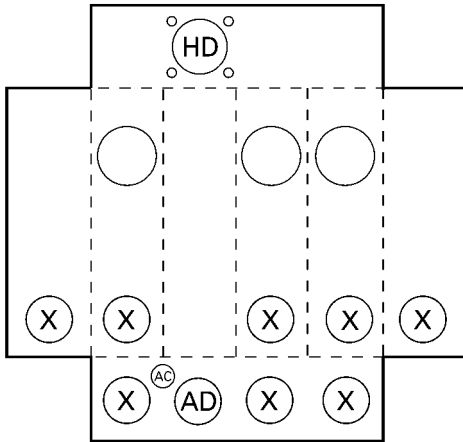


Figure 20

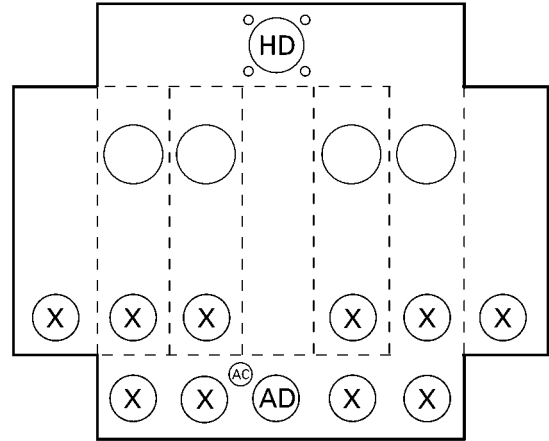


Figure 21

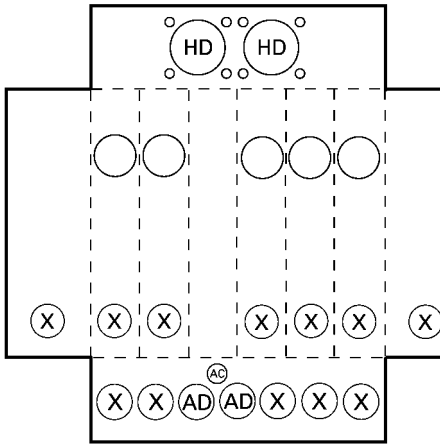


Figure 22

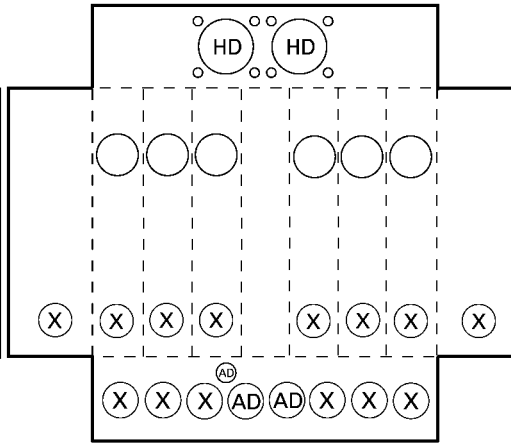


Figure 23

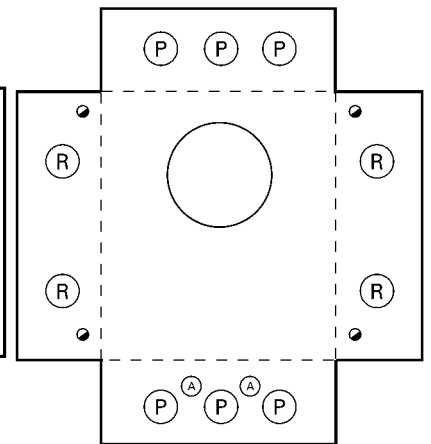


Figure 24

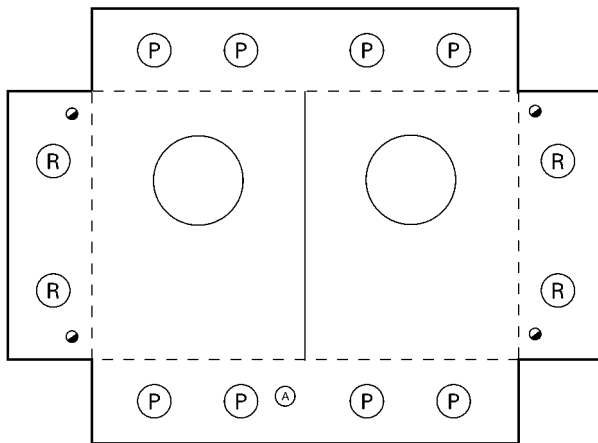


Figure 25

KNOCKOUTS (inches):

●:	1/4
A:	1/2
B:	1/2, 3/4
L:	1/2, 3/4, 1, 1-1/4, 1-1/2
N:	3/4, 1, 1-1/4, 1-1/2, 2
P:	1, 1-1/4
R:	1, 1-1/4, 1-1/2, 2
S:	1, 1-1/4, 1-1/2, 2, 2-1/2
X:	1-1/4, 1-1/2, 2, 2-1/2
Z:	1-1/2, 2, 2-1/2
EE:	2, 2-1/2, 3
GG:	2-1/2, 3, 3-1/2
HH:	2-1/2, 3, 3-1/2, 4
AB:	1/4, 1/2, 7/8
AC:	1/4, 1/2
AD:	1-1/4, 1-1/2, 2, 2-1/2, 3
AE:	1/4, 1/2, 3/4, 1, 1-1/4
AF:	1, 1-1/2, 2, 2-1/2, 3
AG:	3/4, 1, 1-1/4, 1-1/2, 2, 2-1/2, 3
AH:	1/4, 1/2, 3/4
AI:	1, 1-1/4, 1-1/2, 2, 2-1/2, 3
HD:	Ø4.281 HUB OP
RX:	Ø2.750 HUB OP

Meter Centers

Knockout Diagrams

Selection

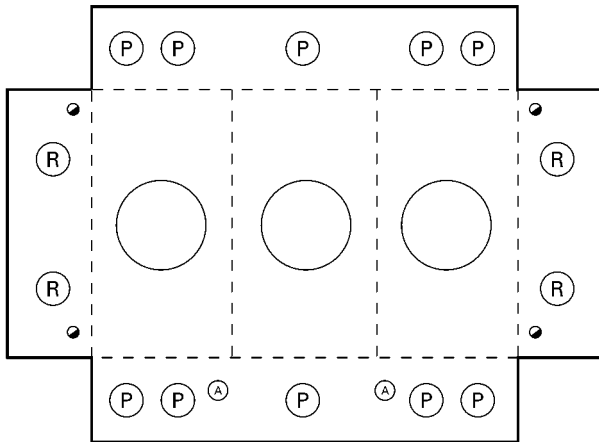


Figure 26

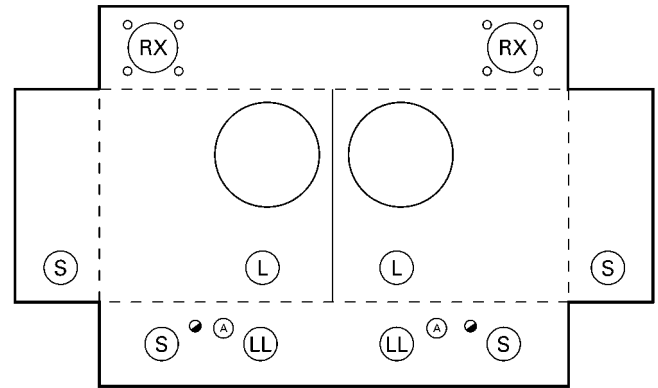


Figure 27

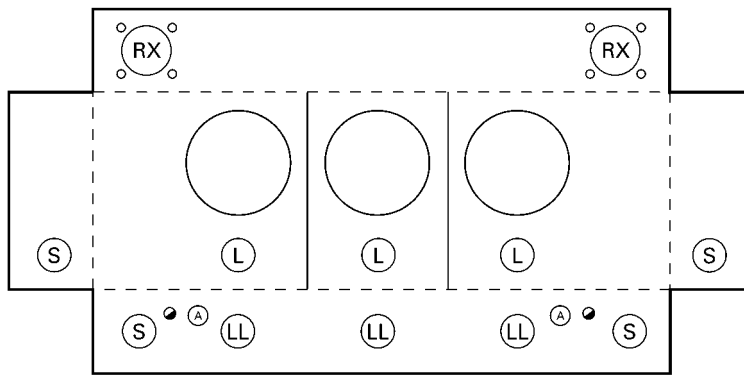


Figure 28

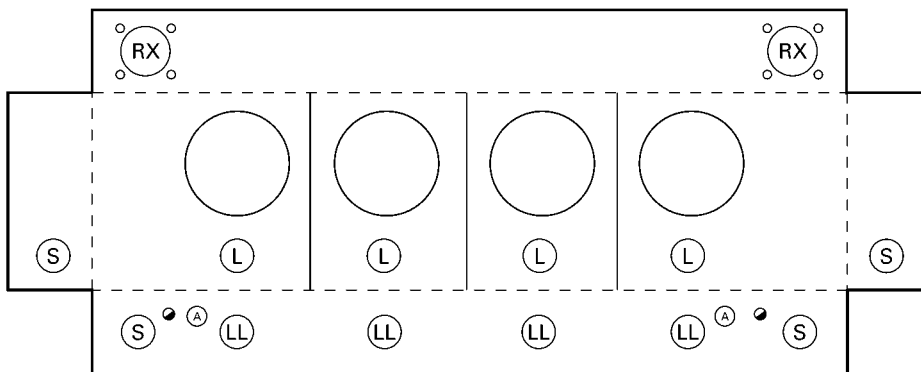


Figure 29

KNOCKOUTS (inches):

●	1/4
A:	1/2
B:	1/2, 3/4
L:	1/2, 3/4, 1, 1-1/4, 1-1/2
N:	3/4, 1, 1-1/4, 1-1/2, 2
P:	1, 1-1/4
R:	1, 1-1/4, 1-1/2, 2
S:	1, 1-1/4, 1-1/2, 2, 2-1/2
X:	1-1/4, 1-1/2, 2, 2-1/2
Z:	1-1/2, 2, 2-1/2
EE:	2, 2-1/2, 3
GG:	2-1/2, 3, 3-1/2
HH:	2-1/2, 3, 3-1/2, 4
AB:	1/4, 1/2, 7/8
AC:	1/4, 1/2
AD:	1-1/4, 1-1/2, 2, 2-1/2, 3
AE:	1/4, 1/2, 3/4, 1, 1-1/4
AF:	1, 1-1/2, 2, 2-1/2, 3
AG:	3/4, 1, 1-1/4, 1-1/2, 2, 2-1/2, 3
AH:	1/4, 1/2, 3/4
AI:	1, 1-1/4, 1-1/2, 2, 2-1/2, 3
HD:	Ø4.281 HUB 0P
RX:	Ø2.750 HUB 0P

Meter Centers

Knockout Diagrams

Selection

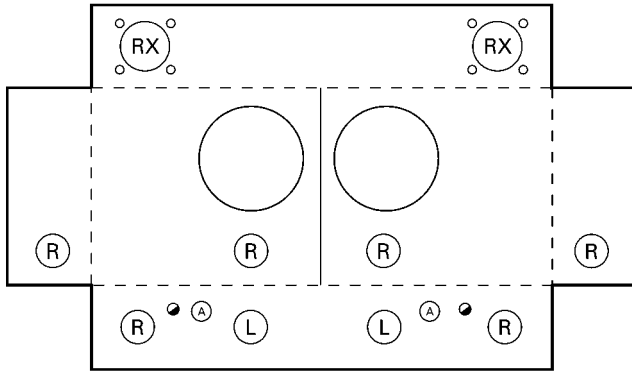


Figure 30

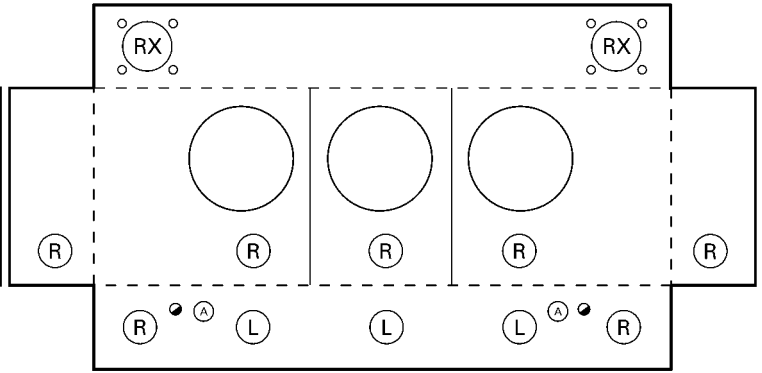


Figure 31

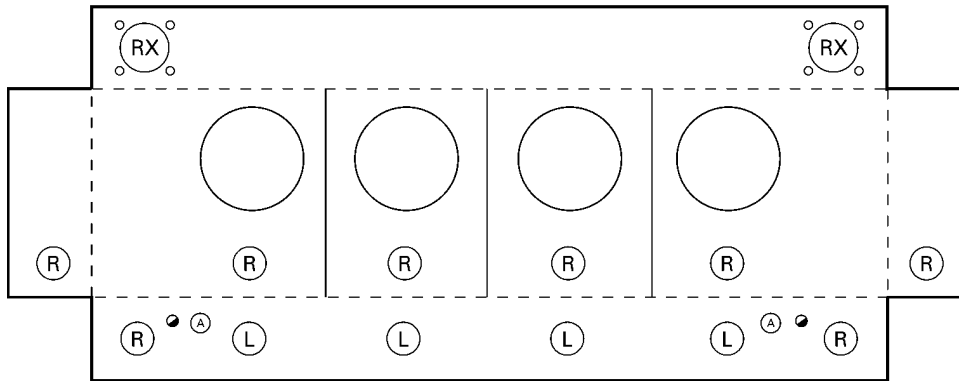


Figure 32

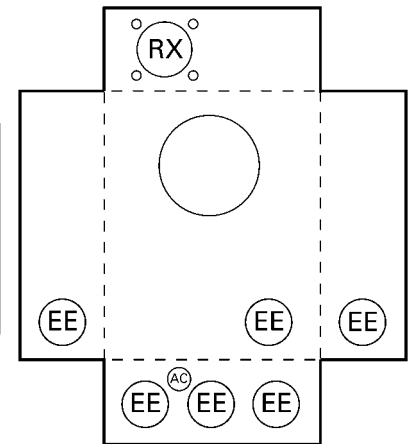


Figure 33

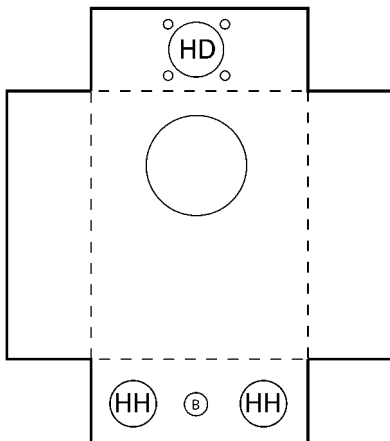


Figure 34

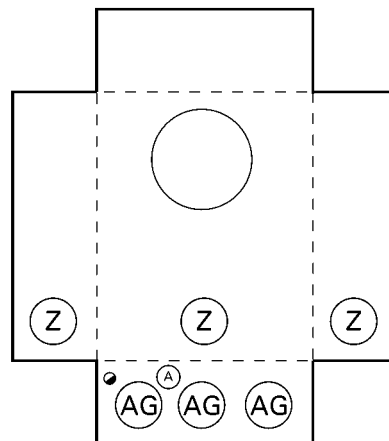


Figure 35

KNOCKOUTS (inches):.

●	1/4
A:	1/2
B:	1/2, 3/4
L:	1/2, 3/4, 1, 1-1/4, 1-1/2
N:	3/4, 1, 1-1/4, 1-1/2, 2
P:	1, 1-1/4
R:	1, 1-1/4, 1-1/2, 2
S:	1, 1-1/4, 1-1/2, 2, 2-1/2
X:	1-1/4, 1-1/2, 2, 2-1/2
Z:	1-1/2, 2, 2-1/2
EE:	2, 2-1/2, 3
GG:	2-1/2, 3, 3-1/2
HH:	2-1/2, 3, 3-1/2, 4
AB:	1/4, 1/2, 7/8
AC:	1/4, 1/2
AD:	1-1/4, 1-1/2, 2, 2-1/2, 3
AE:	1/4, 1/2, 3/4, 1, 1-1/4
AF:	1, 1-1/2, 2, 2-1/2, 3
AG:	3/4, 1, 1-1/4, 1-1/2, 2, 2-1/2, 3
AH:	1/4, 1/2, 3/4
AI:	1, 1-1/4, 1-1/2, 2, 2-1/2, 3
HD:	∅4.281 HUB 0P
RX:	∅2.750 HUB 0P

Meter Centers

Knockout Diagrams

Selection

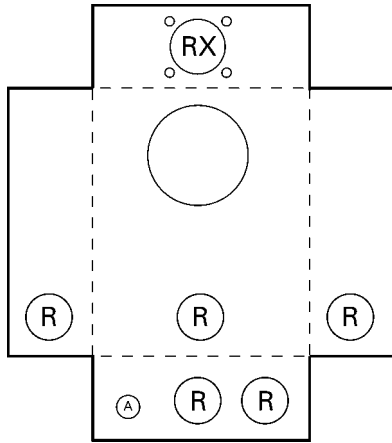


Figure 36

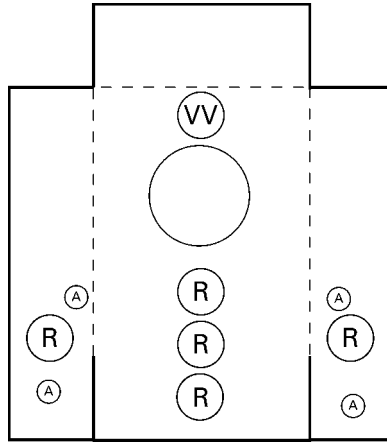


Figure 37

KNOCKOUTS (inches):	
●	1/4
A:	1/2
B:	1/2, 3/4
L:	1/2, 3/4, 1, 1-1/4, 1-1/2
N:	3/4, 1, 1-1/4, 1-1/2, 2
P:	1, 1-1/4
R:	1, 1-1/4, 1-1/2, 2
S:	1, 1-1/4, 1-1/2, 2, 2-1/2
X:	1-1/4, 1-1/2, 2, 2-1/2
Z:	1-1/2, 2, 2-1/2
EE:	2, 2-1/2, 3
GG:	2-1/2, 3, 3-1/2
HH:	2-1/2, 3, 3-1/2, 4
AB:	1/4, 1/2, 7/8
AC:	1/4, 1/2
AD:	1-1/4, 1-1/2, 2, 2-1/2, 3
AE:	1/4, 1/2, 3/4, 1, 1-1/4
AF:	1, 1-1/2, 2, 2-1/2, 3
AG:	3/4, 1, 1-1/4, 1-1/2, 2, 2-1/2, 3
AH:	1/4, 1/2, 3/4
AI:	1, 1-1/4, 1-1/2, 2, 2-1/2, 3
HD:	Ø4.281 HUB 0P
RX:	Ø2.750 HUB 0P

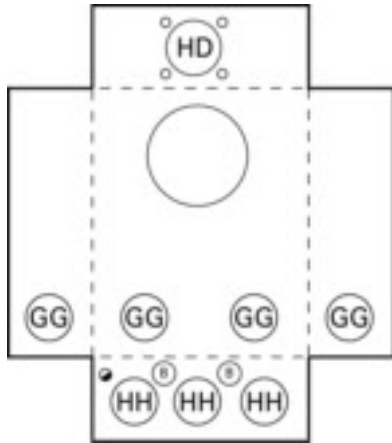


Figure 38

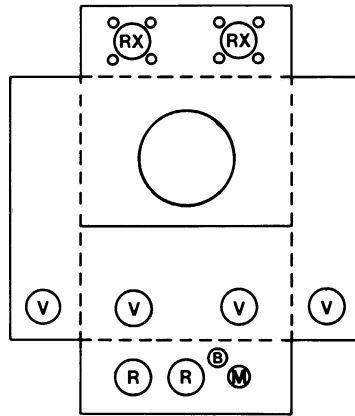


Figure 39

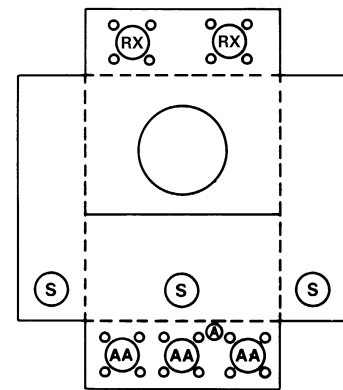


Figure 40

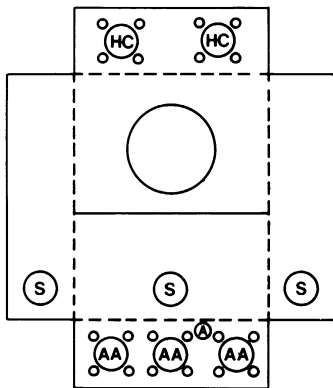


Figure 41

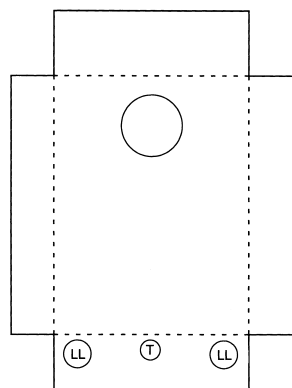


Figure 42

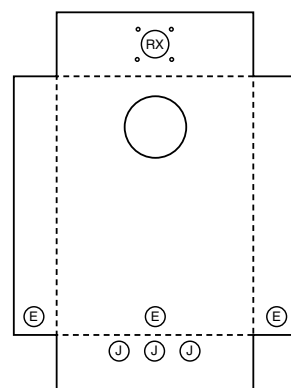


Figure 43

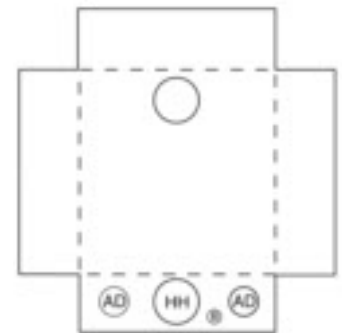


Figure 44

2
METER
CENTERS

Meter Centers

Catalog Number Logic

Combination Meter Sockets

