

Continuous light element, green, 12-230 V AC/DC, 50 mm diameter, base BA 15d without light element



General technical data	
Product brand name	SIRIUS
Product designation	Continuous light element
Design of the optical signal	continous light
Type of voltage of the operating voltage	AC/DC
Operating voltage	
• at DC rated value	12 ... 230 V
• at AC at 50 Hz rated value	12 ... 230 V
• at AC at 60 Hz rated value	12 ... 230 V
Material	PC
Color	green
Mounting type	Bayonet
Reference code	
• acc. to DIN EN 61346-2	P
• acc. to DIN EN 81346-2	P





Mechanical data	
Outer diameter of the signal column element	50 mm

Lamp

Product component Light source	No
Type of light source	filament lamp / LED
socket type	BA 15d

Ambient conditions	
Ambient temperature during operation	-20 ... +60 °C
Protection class IP	IP54
Height	67 mm
Width	52 mm

Certificates/ approvals

General Product Approval	EMC	Declaration of Conformity	other
 UL		 RCM	 EG-Konf.
			Miscellaneous Confirmation

Further information

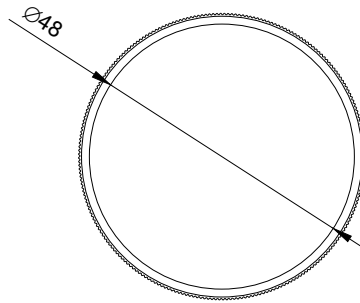
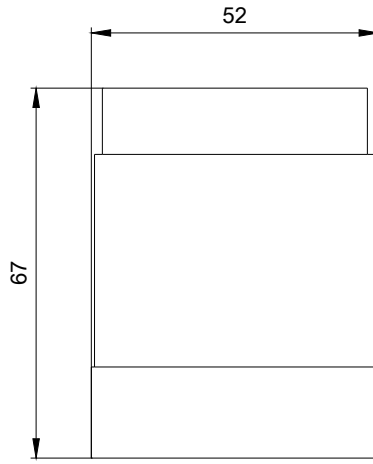
Information- and Downloadcenter (Catalogs, Brochures,...)
www.siemens.com/sirius/catalogs

Industry Mall (Online ordering system)
<https://mall.industry.siemens.com/mall/en/en/Catalog/product?mlfb=8WD4200-1AC>

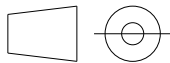
Cax online generator
<http://support.automation.siemens.com/WW/CAXorder/default.aspx?lang=en&mlfb=8WD4200-1AC>

Service&Support (Manuals, Certificates, Characteristics, FAQs,...)
<https://support.industry.siemens.com/cs/ww/en/ps/8WD4200-1AC>

Image database (product images, 2D dimension drawings, 3D models, device circuit diagrams, EPLAN macros, ...)
http://www.automation.siemens.com/bilddb/cax_de.aspx?mlfb=8WD4200-1AC&lang=en



last modified:



W9.4444; 8WD42.-..._ALL
 W6.8611; 10/07/2019