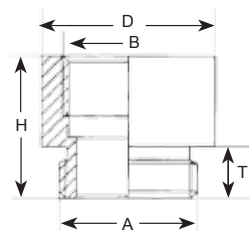
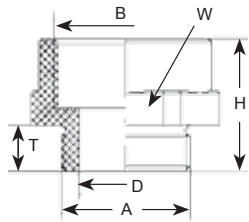


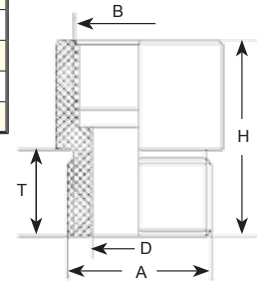


Type A



Type C*

Note: C is Polypropylene.



Black Nylon/Polypropylene* - Thread Enlargers:
*Metric to Metric Threads**

Part Numbers	Threads		Adapter Type	Dimensions in Inches (mm)			
	Male Thread A	Female Thread B		T	H	D	W
				Thread Length	Height	Inner Diameter	Wrench Flat
EM-1216-BK	M12 x 1.5	M16 x 1.5	A	.31 (8)	.79 (20)	.26 (6.5)	.83 (21)
EM-1620-BK	M16 x 1.5	M20 x 1.5	A	.31 (8)	.83 (21)	.35 (9)	.98 (25)
EM-2025-BK	M20 x 1.5	M25 x 1.5	A	.31 (8)	.91 (23)	.55 (14)	1.18 (30)
EM-2532-BK	M25 x 1.5	M32 x 1.5	C*	.59 (15)	1.18 (30)	.65 (16.5)	N/A
EM-3240-BK	M32 x 1.5	M40 x 1.5	C*	.59 (15)	1.36 (34.5)	.91 (23)	N/A
EM-4050-BK	M40 x 1.5	M50 x 1.5	C*	.59 (15)	1.36 (34.5)	1.18 (30)	N/A
EM-5063-BK	M50 x 1.5	M63 x 1.5	C*	.59 (15)	1.38 (35)	1.54 (39)	N/A

Operating Temperature (Nylon Enlargers): -4 °F to 176 °F (-20 °C to 80 °C)

Nickel Plated Brass - Thread Enlargers: PG to PG Threads*

Part Numbers	Threads		Dimensions in Inches (mm)		
	Male Thread A	Female Thread B	D	T	H
			Outer Diameter	Thread Length	Height
EP-0709-BR	PG 7	PG 9	.67 (17)	.20 (5)	.59 (15)
EP-0911-BR	PG 9	PG 11	.79 (20)	.24 (6)	.65 (16.5)
EP-0913-BR	PG 9	PG 13 / 13.5	.87 (22)	.24 (6)	.69 (17.5)
EP-1113-BR	PG 11	PG 13 / 13.5	.87 (22)	.24 (6)	.69 (17.5)
EP-1116-BR	PG 11	PG 16	.94 (24)	.24 (6)	.73 (18.5)
EP-1121-BR	PG 11	PG 21	1.18 (30)	.24 (6)	.81 (20.5)
EP-1316-BR	PG 13 / 13.5	PG 16	.94 (24)	.26 (6.5)	.75 (19)
EP-1321-BR	PG 13 / 13.5	PG 21	1.18 (30)	.26 (6.5)	.83 (21)
EP-1621-BR	PG 16	PG 21	1.18 (30)	.26 (6.5)	.83 (21)
EP-1629-BR	PG 16	PG 29	1.54 (39)	.26 (6.5)	.88 (22.5)
EP-2129-BR	PG 21	PG 29	1.54 (39)	.28 (7)	.91 (23)
EP-2936-BR	PG 29	PG 36	1.97 (50)	.31 (8)	1.08 (27.5)
EP-3642-BR	PG 36	PG 42	2.24 (57)	.35 (9)	1.22 (31)
EP-4248-BR	PG 42	PG 48	2.52 (64)	.39 (10)	1.30 (33)

Nickel Plated Brass - Thread Enlargers: Metric to Metric Threads*

Part Numbers	Threads		Dimensions in Inches (mm)		
	Male Thread A	Female Thread B	D	T	H
			Outer Diameter	Thread Length	Height
EM-1216-BR	M12 x 1.5	M16 x 1.5	.71 (18)	.20 (5)	.59 (15)
EM-1620-BR	M16 x 1.5	M20 x 1.5	.87 (22)	.24 (6)	.69 (17.5)
EM-2025-BR	M20 x 1.5	M25 x 1.5	1.06 (27)	.26 (6.5)	.75 (19)
EM-2532-BR	M25 x 1.5	M32 x 1.5	1.34 (34)	.26 (6.5)	.83 (21)
EM-3240-BR	M32 x 1.5	M40 x 1.5	1.65 (42)	.28 (7)	.91 (23)
EM-4050-BR	M40 x 1.5	M50 x 1.5	2.09 (53)	.35 (9)	1.22 (31)
EM-5063-BR	M50 x 1.5	M63 x 1.5	2.60 (66)	.35 (9)	1.22 (31)

Nickel Plated Brass - Thread Enlargers: NPT to NPT Threads*

Part Numbers	Threads		Dimensions in Inches (mm)		
	Male Thread A	Female Thread B	D	T	H
			Outer Diameter	Thread Length	Height
EN-3812-BR	3/8" NPT	1/2" NPT	1.10 (28)	.59 (15)	1.50 (38)
EN-1234-BR	1/2" NPT	3/4" NPT	1.10 (28)	.79 (20)	1.50 (38)
EN-1210-BR	1/2" NPT	1" NPT	1.36 (34.5)	.79 (20)	1.75 (44.5)
EN-3410-BR	3/4" NPT	1" NPT	1.38 (35)	.71 (18)	1.69 (43)
EN-1054-BR	1" NPT	1-1/4" NPT	1.73(44)	.94 (24)	1.97 (50)

Is your thread size off by one size?

These Enlargers will solve that threading problem.

They convert holes which fit PG, NPT or Metric threads to a larger female thread of the same thread type.

More custom parts available online at www.sealconusa.com or upon request!



Optional Locking Nuts, O-Rings & Other Accessories starting on Page 28 - 39.

*Note: O-Ring not Included