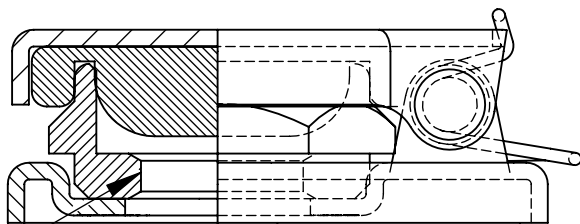


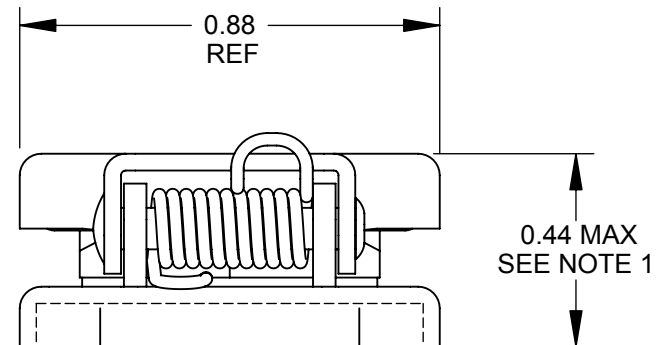
NOTES:

1. DIMENSIONS WITH PART OPEN AS SHOWN.
2. MATERIALS:
 BASE AND COVER - STEEL, BRIGHT NICKEL PLATED
 GASKET - NEOPRENE
 NUT - BRASS, NICKEL PLATED
 TORSION SPRING - STAINLESS STEEL
 AXLE - BRASS, NICKEL PLATED
3. THIS PRODUCT IS RoHS COMPLIANT.



3/8-32 UNF-2B
THREAD

Ø0.386
REF



CUSTOMER DRAWING

					THIS DRAWING DESCRIBES A DESIGN CONSIDERED PROPRIETARY IN NATURE, DEVELOPED AND MANUFACTURED BY SWITCHCRAFT INC. AND IS RELEASED ON A CONFIDENTIAL BASIS FOR IDENTIFICATION PURPOSES ONLY.					
					SIZE	WIDTH	MULT	LBS/M	TEMPER	
					FINISH			MATERIAL		
					SPEC No.			SPEC No.		
					FIRST USED ON		SCALE 2.5:1			
E	23793	9-19-07	RF	TJK	DATE DRAWN	BY	CHKD	APVD	Switchcraft®	
D	22434	11-9-98	RC	JF	4-21-64	IRT	CJW	LG		
REV	ECO NUMBER	DATE	BY	APVD	NAME		PART No.		REV	
REVISIONS					JAX COVER, RoHS					SHEET 1 OF 1
DO NOT SCALE DRAWING					512					E

SolidWorks CAD File

