

# Data sheet

## 6 port module frame 1RU

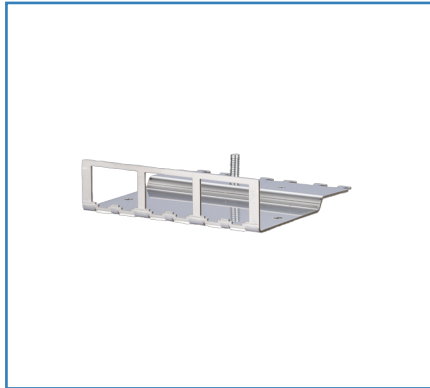
Page 1/4

P/N  
130922-00-E

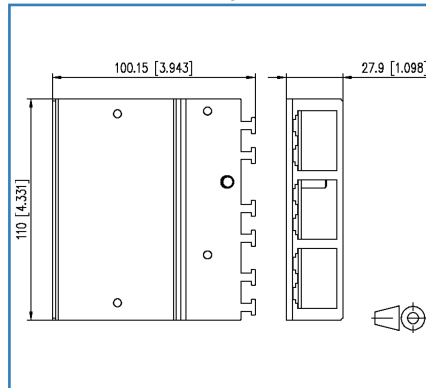
EAN 4250184106173

2015-29-06

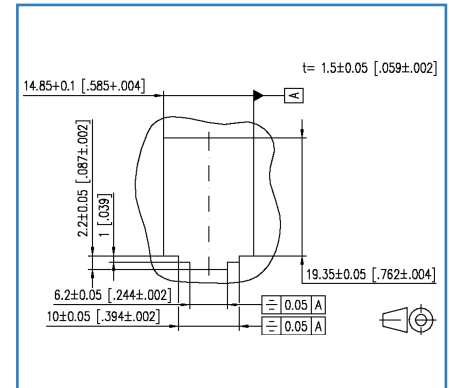
### Illustrations



Dimensional drawing



Cut-out



See enlarged drawings at the end of document

### Product specification

- module frame for 6 individual modules in Modul design
- 1RU module frame for mounting in surface-mounted housing, top hat rail adapter or 1RU module frame
- optional strain relief using cable ties
- grounding bolt M6 x 10 with nut and lock washer



**Data sheet**  
**6 port module frame 1RU**

Page 2/4

P/N  
**130922-00-E**  
EAN 4250184106173  
2015-29-06

**Technical Data**

<b>General Data</b>	
Fields of application	Office
Design	patch panel
Color	stainless steel
Dimensions	
Dimension (L x W x H)	100.15 x 110.00 x 27.90 mm
Dimension (L x W x H)	3.94 x 4.33 x 1.10 in.
Height unit	1 HE
Modularity	yes
<b>Connections/interfaces</b>	
Number of ports interface 1	6
Number of equipped ports interface 1	0
Number of ports interface 2	6
Number of ports interface 2 equipped	0
Ground connection	grounding bolt M6x10 with nut and lock washer
<b>Mechanical characteristics</b>	
Cut-out	Modul
<b>Materials and material properties</b>	
Material - Module support	stainless steel
<b>Environmental conditions</b>	
Temperature (min. - max.)	
Temperature - Storage °C	-40 - 70 °C
Temperature - Storage °F	-40 - 158 °F
Temperature - Operating °C	-40 - 70 °C
Temperature - Operating °F	-40 - 158 °F
<b>Certifications</b>	
Gost Certification	yes



**Data sheet**  
**6 port module frame 1RU**

Page 3/4

P/N  
130922-00-E  
EAN 4250184106173

2015-29-06

**Technical Data****Approvals**

RoHS compliant

**Classifications**

ETIM 5.0 EC001128

**Packing details**

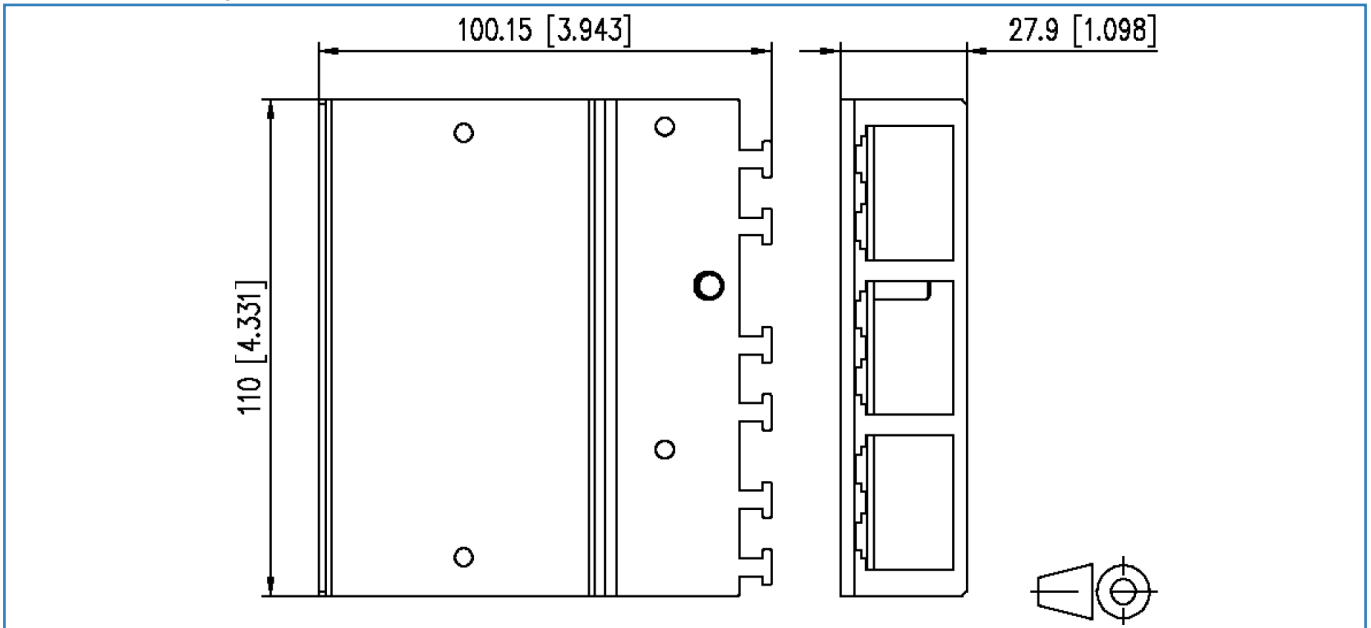
Type of packaging	1 pc(s) / box
Packaging unit - Weight (gram)	2299.00 g
Packaging unit - Weight (pound)	5.07 lb
Packaging dimension (W x H x D)	139.00 x 115.00 x 37.00 mm
Packaging dimension (W x H x D)	5.47 x 4.53 x 1.46 in.



Data sheet  
6 port module frame 1RU

Illustrations

Dimensional drawing



Cut-out

