

Data sheet

E-DAT C6 24x8(8) 1RU LSA Cat.6 patch panel

Page 1/5

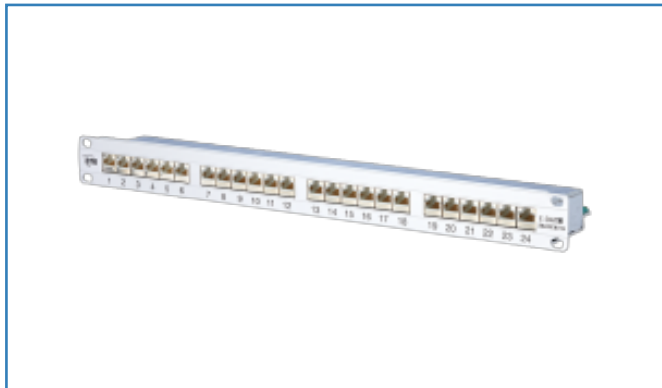
P/N

130855-E

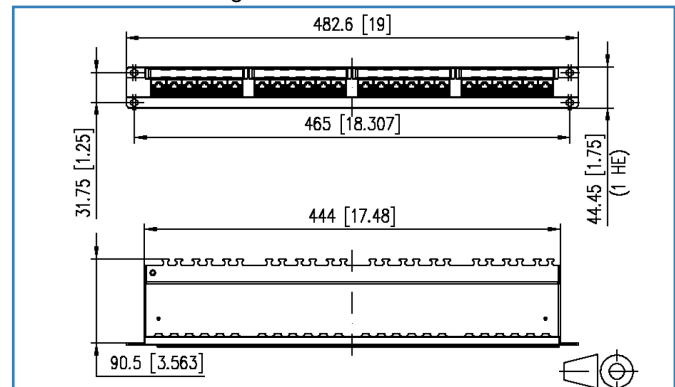
EAN 4250184104124

2015-08-07

Illustrations



Dimensional drawing



See enlarged drawings at the end of document

Product specification

- 19 inch 1RU frame made of silver anodized aluminum with 24 individually shielded RJ45 jacks
- certified to GHMT Cat.6 12C-de-embedded
- compliance with class E to ISO/IEC 11801 Ed.2.2:2011-06, DIN EN 50173-1:2011-09
- tested: Link up to 500 MHz
- for 10 GBit Ethernet (IEEE 802.3an)
- suitable for Power over Ethernet (PoE, PoE plus and UPoE)
- wire pairs can be led to the LSA terminal without untwisting the pair
- connection of 2 to 4-pair data lines to LSA insulation displacement connectors (AWG 22-24) conductor colors marking to TIA/EIA 568A
- optional strain relief using cable ties
- modules connected by means of grounding rail

Data sheet
E-DAT C6 24x8(8) 1RU LSA Cat.6 patch panel

Technical Data

General Data

Fields of application	Office
Design	patch panel
Mounting style	1RU
Shielding	shielded
Transmission technology	Copper
Wiring	T568A
Color	anodized alu.
Dimensions	
Dimension (L x W x H)	90.50 x 482.60 x 44.45 mm
Dimension (L x W x H)	3.56 x 19.00 x 1.75 in.
Inches	19 inches
Height unit	1RU

Transmission characteristics

Category (ISO)	6
Class (ISO/IEC)	E _A
Category (TIA)	6
PoE	IEEE 802.3af
PoE plus	IEEE 802.3at
UPoE	yes
Transmission rate up to 10 GBit	IEEE 802.3an

Connections/interfaces

Connector technology interface 1	LSA terminal block
Connector technology interface 2	RJ45-jack
Number of ports interface 2	24
Number of ports interface 2 equipped	24
Number of positions/contacts interface 1	24 x 8
Number of positions/contacts interface 2	24 x 8P/8C



Technical Data

Connections/interfaces

Termination data, solid wire (min. - max.)

Conductor cross section, solid wire	AWG 26 - 22
Conductor cross section, solid wire	0.128 - 0.324 mm ²
Conductor diameter, solid wire (bare copper)	0.409 - 0.643 mm
Conductor diameter, solid wire (bare copper)	0.016 - 0.025 in.
Cable access/outlet	180°
Grounding wire length	0.30 m
Grounding wire length	0.98 ft
Shield connection	flexible contact spring

Electrical characteristics

Current carrying capacity	max. 1 A
Rated voltage	max. 50 V
Contact resistance	max. 20 mOhm
Through resistance	max. 200 mOhm
Insulation resistance	min. 500 MOhm
Dielectric strength conductor-conductor (secondary)	max. 1000 V DC

Mechanical characteristics

Insertion and withdrawal force	max. 20 N
Life - Number of mating cycles	min. 750
Position/mounting of latch - standard installation position	top

Materials and material properties

Material - Terminal block housing	PBT (polybutylene terephthalate)
Material - Jack contact	CuSn (tin bronze)
Material - Jack contact finish	Ni + Au (nickel-gold)
Material - Terminal block contact	CuZn (brass)
Material - Terminal block contact finish	Sn (tin)
Material - Module support	Al (Aluminium)
Material - Module support finish	silver anodized

Data sheet
E-DAT C6 24x8(8) 1RU LSA Cat.6 patch panel

Page 4/5

P/N
130855-E
EAN 4250184104124

2015-08-07

Technical Data

Environmental conditions

Temperature (min. - max.)	
Temperature - Storage °C	-40 - 70 °C
Temperature - Storage °F	-40 - 158 °F
Temperature - Operating °C	-40 - 70 °C
Temperature - Operating °F	-40 - 158 °F
Electromagnetic measurement	E ₂

Certifications

GHMT PVP	yes
Gost Certification	yes

Approvals

CE	compliant
RoHS	compliant

The product meets the following standards

Generic cabling systems	
General requirements	ISO/IEC 11801 Ed.2.2: 2011-06 DIN EN 50173-1: 2011-09 TIA/EIA 568-C.2 (2009-08)
Connectors for electronic equipment	
Free and fixed connectors	DIN EN 60603-7-51:2011-01

Classifications

ETIM 5.0	EC001128
----------	----------

Packing details

Type of packaging	1 pc(s) / box
Packaging unit - Weight (gram)	1120.00 g
Packaging unit - Weight (pound)	2.47 lb
Packaging dimension (W x H x D)	520.00 x 100.00 x 46.00 mm
Packaging dimension (W x H x D)	20.47 x 3.94 x 1.81 in.

© 2015 METZ CONNECT - Technische Änderungen vorbehalten! Subject to modifications! Sous réserve de modifications techniques!



Illustrations

Dimensional drawing

