

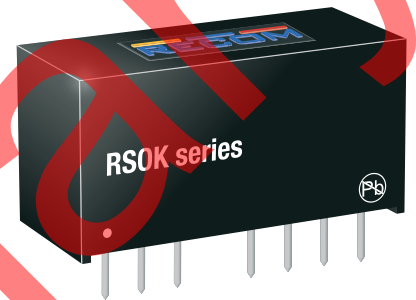
Features

- 4:1 wide input voltage range
- SIP8 package
- Continuous short circuit protection
- No minimum load required
- 3kVDC/1min basic isolation

Regulated Converters

RSOK-Z

1 Watt
SIP8
Single Output



UL62368-1 certified
C22.2 No. 62368-1-19 certified
IEC/EN62368-1 certified
CB Report

Description

The RSOK-Z series is a cutting-edge DC/DC converter series with a wide 4:1 input voltage range of 9-36 VDC. This converter features ON/OFF control for added convenience and precision. The RSOK-Z boasts high accuracy and tight line and load regulation, ensuring reliable performance even under challenging conditions. The device also includes continuous short circuit protection and undervoltage lockout (UVLO) for added safety and security. This product is certified to meet the rigorous safety requirements of IEC/EN/UL 62368-1, making it suitable for use in a variety of industrial applications. With a maximum output power of 1W and the ability to operate at 0% minimum load, the RSOK-Z is both versatile and efficient. Finally, the RSOK-Z offers basic grade isolation of 3kVDC/1min and an operating range of -40°C to 90°C without derating, making it ideal for use in demanding industrial environments.

Selection Guide

Part Number	Input Voltage Range [VDC]	Output Voltage [VDC]	Output Current [mA]	Efficiency typ. ⁽¹⁾ [%]	max. Capacitive Load ⁽²⁾ [µF]
RSOK-2405SZ/H3	9-36	5	200	75	1500

Notes:

Note1: Efficiency is tested at minimum input and full load at +25°C ambient

Note2: Max Cap Load is tested at nominal input and full resistive load

Model Numbering

RSOK-2405SZ/H3
Output Voltage 3kVDC Isolation

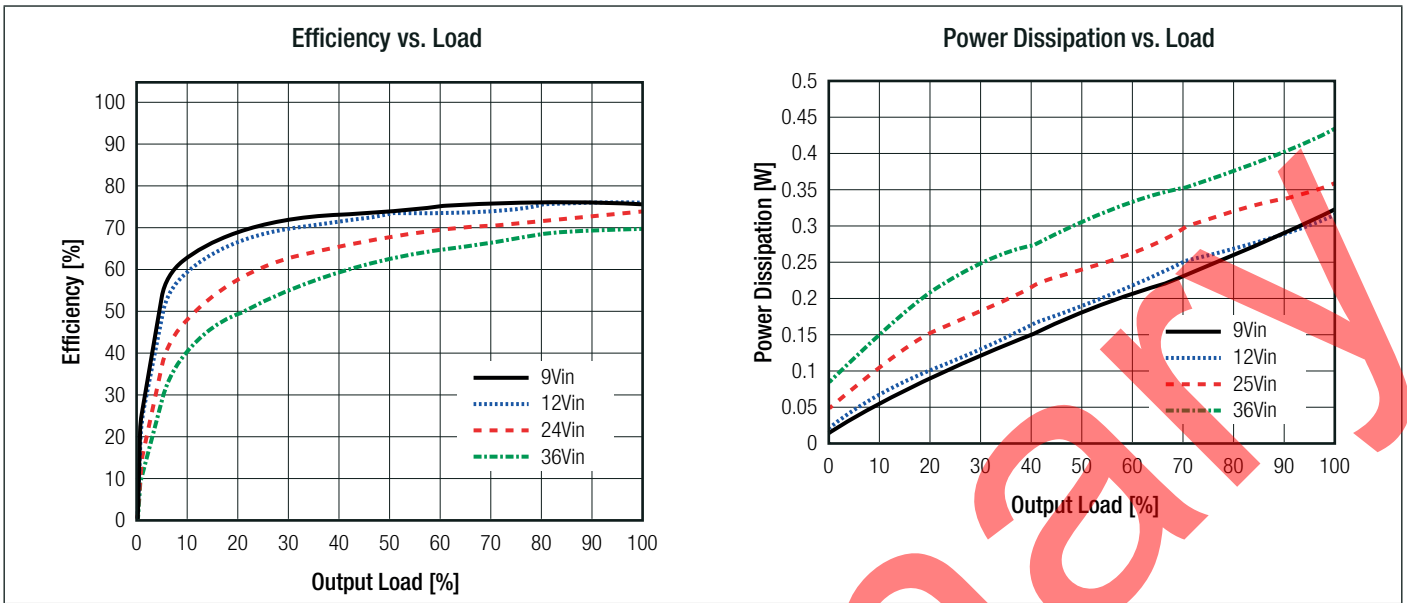
Specifications (measured @ $t_{amb}=25^{\circ}C$, nom. V_{in} , full load and after warm-up unless otherwise stated)

BASIC CHARACTERISTICS				
Parameter	Condition	Min.	Typ.	Max.
Internal Input Filter				capacitors
Input Voltage Range	nom. $V_{in}=24VDC$	9VDC		36VDC
Under Voltage Lockout (UVLO)	DC-DC ON	8.1VDC		8.7VDC
	DC-DC OFF	6VDC		6.66VDC
Input Current			160mA	
Quiescent Current			3mA	10mA
Minimum Load		0%		
ON/OFF CTRL	DC-DC ON			Open or $V_{CTRL}>1.5VDC$
	DC-DC OFF			Short to $-V_{in}$ or $<1.5VDC$
Input Current of CTRL Pin	DC-DC ON			1mA
Standby Current	DC-DC OFF		3mA	6mA
Internal Operating Frequency		100kHz		800kHz
Output Ripple and Noise ⁽³⁾	20MHz BW			80mVp-p

Notes:
Note3: Measurements are made with a 0.1µF MLCC across output (low ESR)

continued on next page

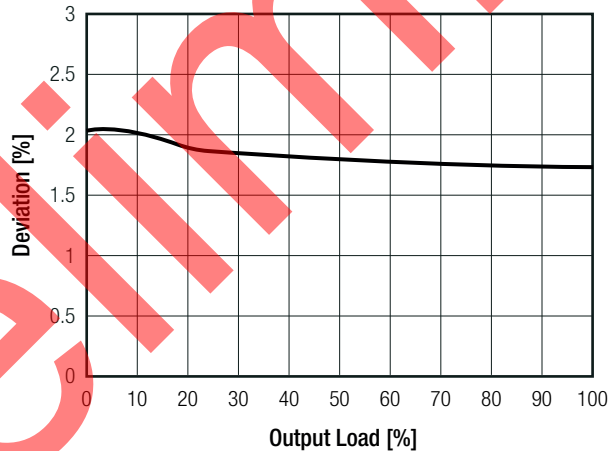
Specifications (measured @ $t_{amb}=25^{\circ}\text{C}$, nom. V_{in} , full load and after warm-up unless otherwise stated)



REGULATIONS

Parameter	Condition	Value
Output Accuracy		$\pm 2.0\%$ typ.
Line Regulation	low line to high line, full load	$\pm 0.5\%$ max.
Load Regulation ⁽⁴⁾	10% to 100% load	1.0% max.

Deviation vs Load (@nom V_{in})



Notes:

Note4: Operation below 10% load will not harm the converter, but specifications may not be met

PROTECTIONS

Parameter	Type		Value
Short Circuit Protection (SCP)			continuous, auto recovery
Short Circuit Input Current	nom. $V_{in}=24\text{VDC}$		120mA max.
Isolation Voltage ⁽⁵⁾	1 minute	I/P to O/P	3kVDC
			1.5kVAC/50Hz
Isolation Resistance	I/P to O/P, $V_{iso}=500\text{VDC}$		1G Ω min.
Isolation Capacitance	I/P to O/P, 100kHz/0.1V		50pF max.
Insulation Grade	according to 62368-1		basic

Notes:

Note5: For repeat Hi-Pot testing, reduce the time and/or the test voltage

Note6: Refer to local safety regulations if input over-current protection is also required. Recommended fuse: slow blow type

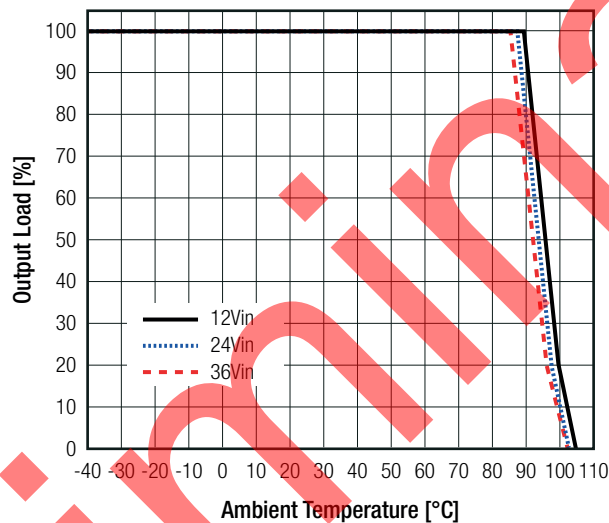
Specifications (measured @ $t_{amb}= 25^{\circ}\text{C}$, nom. V_{in} , full load and after warm-up unless otherwise stated)

ENVIRONMENTAL

Parameter	Condition		Value
	with derating	refer to „Derating Graph“	
Operating Temperature Range			-40°C to +105°C
Maximum Case Temperature			+115°C
Temperature Coefficient			$\pm 0.02\%/K$
Thermal Impedance	natural convection 0.1 m/s		49.17K/W
Operating Altitude			5000m
Operating Humidity	non-condensing		95% RH max.
Pollution Degree			PD2
MTBF	according to MIL-HDBK-217F, G.B.		$t_{AMB}= +25^{\circ}\text{C}$
			$t_{AMB}= +85^{\circ}\text{C}$
			2725 x 10 ³ hours
			867 x 10 ³ hours

Derating Graph

(@ Chamber and natural convection 0.1 m/s)



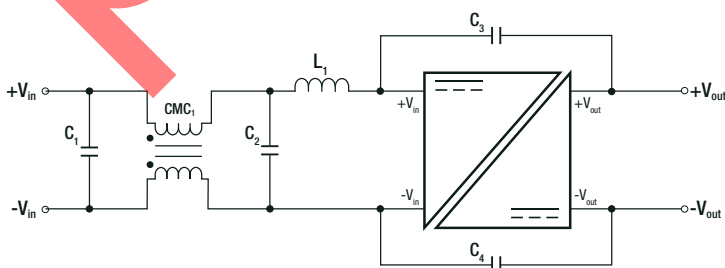
SAFETY AND CERTIFICATIONS

Certificate Type (Safety)	Report / File Number	Standard
Audio/Video, information and communication technology equipment - Part1: Safety requirements 3rd Edition	E491408-A6025-UL	UL62368-1, 3rd Edition, 2019
		CAN/CSA-C22.2 No. 62368-1-19 3rd Edition
Audio/Video, information and communication technology equipment - Part1: Safety requirements 3rd Edition (CB Scheme)	085-220180801-000	IEC62368-1:2018 3rd Edition
		EN IEC 62368-1:2020+A11:2020
RoHS2		RoHS 2011/65/EU + AM2015/863

EMC Compliance

EMC Compliance	Condition	Standard / Criterion
Electromagnetic Compatibility of Multimedia Equipment - Emission Requirements	with external filter	EN55032, Class B

EMC Filtering Suggestions according to EN55032



Component List Class B

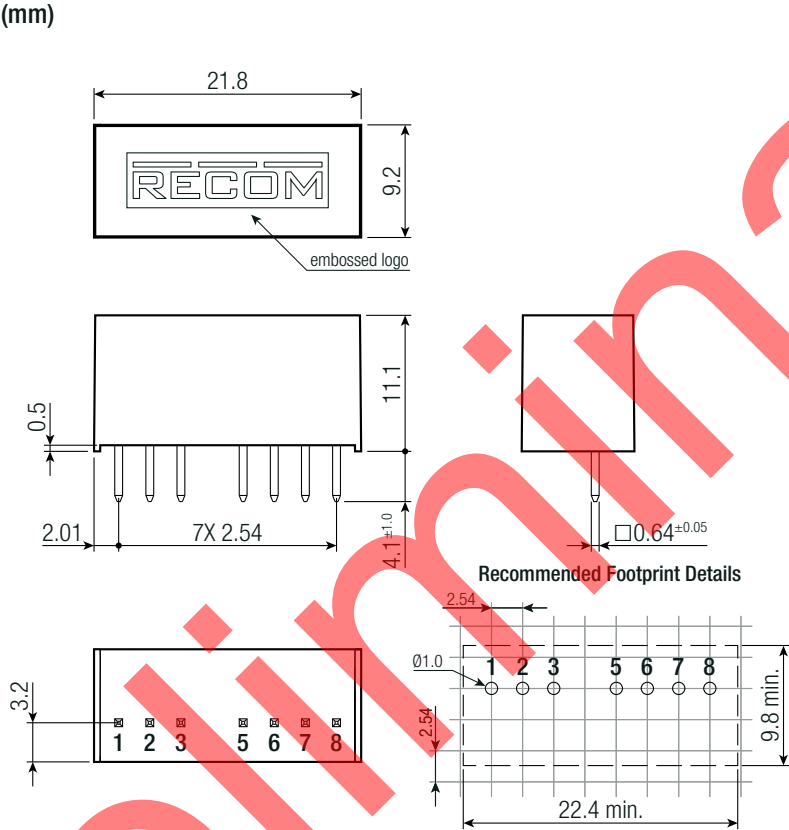
C1/C2	CMC1	C3/C4	L1
10μF	51μF	3kV	22μH, RLS-226

Specifications (measured @ $t_{amb}=25^{\circ}\text{C}$, nom. V_{in} , full load and after warm-up unless otherwise stated)

DIMENSION AND PHYSICAL CHARACTERISTICS

Parameter	Type	Value
Material	case	black plastic, (UL94 V-0)
	potting	PU (UL94 V-0)
	PCB	FR4, (UL94 V-0)
Dimension (LxWxH)		21.8 x 9.2 x 11.1mm
Weight		4.7g typ.

Dimension Drawing (mm)



Pinning Information

Pin #	Single
1	-Vin
2	+Vin
3	CTRL
5	NC
6	+Vout
7	-Vout
8	NC

NC= no connection

Tolerance:
xx.x = ±0.5mm
xx.xx = ±0.25mm

PACKAGING INFORMATION

Parameter	Type	Value
Packaging Dimension (LxWxH)	tube	520.0 x 11.5 x 19.0mm
Packaging Quantity	tube	22pcs
Storage Temperature Range		-50°C to +125°C
Storage Humidity	non-condensing	95% RH max.

The product information and specifications may be subject to changes even without prior written notice. The product has been designed for various applications; its suitability lies in the responsibility of each customer. The products are not authorized for use in safety-critical applications without RECOM's explicit written consent. A safety-critical application is an application where a failure may reasonably be expected to endanger or cause loss of life, inflict bodily harm or damage property. The applicant shall indemnify and hold harmless RECOM, its affiliated companies and its representatives against any damage claims in connection with the unauthorized use of RECOM products in such safety-critical applications.